

Product datasheet for SA6038

CD335 / NKp46 (22-255) Human Protein

Product data:

Product Type:	Recombinant Proteins
Description:	CD335 / NKp46 (22-255) human protein, 0.1 mg
Species:	Human
Expression Host:	E. coli
Expression cDNA Clone or AA Sequence:	MQQQTLPKPF IWAEPHF MVP KEKQVTICCQ GNYGAVEYQL HFEGSLFAVD RPKPPERINK VKFYIPDMNS RMAGQYSCIY RVGELWSEPS NLLDLVSTEM YDTPTLSVHP GPEVISGEEV TFYCRDLTAT SMFLLLKEGR SSHVQRGYGK VQAEFPLGPV TTAHRGTYRX FGSYNNHAWSPFPSEPVKLLV TGDIENTSLA PEDPTFSADT WGTYLLTET GLQKDHALWD HTAQN
Predicted MW:	26.6 kDa
Concentration:	lot specific
Purity:	>95% by SDS-PAGE
Buffer:	Presentation State: Purified State: Liquid protein Buffer System: Phosphate buffered saline (pH 7.4), 1 mM EDTA
Preparation:	Liquid protein
Protein Description:	The extracellular Ig-like domain of NKp46 (22-255aa) was overexpressed in E.coli, and purified by FPLC gel-filtration chromatography, after refolding of the isolated inclusion bodies in a redox buffer.
Storage:	Store at 2 - 8 °C for up to one month or (in aliquots) at -20 °C. Avoid repeated freezing and thawing.
Stability:	Shelf life: one year from despatch.
RefSeq:	NP_001138929
Locus ID:	9437
UniProt ID:	O76036 , A0A0A0MTU0
Cytogenetics:	19q13.42
Synonyms:	CD335; LY94; NK-p46; NKP46
Summary:	Cytotoxicity-activating receptor that may contribute to the increased efficiency of activated natural killer (NK) cells to mediate tumor cell lysis.[UniProtKB/Swiss-Prot Function]

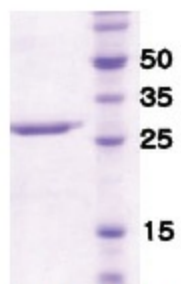


[View online »](#)

Protein Families: Druggable Genome, Transmembrane

Protein Pathways: Natural killer cell mediated cytotoxicity

Product images:



14% SDS-PAGE