

## Product datasheet for SA6012

### Gamma-Synuclein / SNCG (1-127) Human Protein

#### Product data:

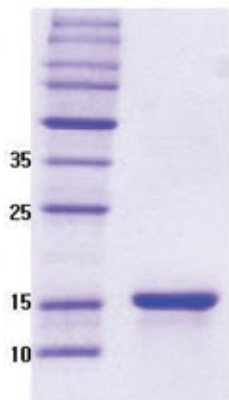
Product Type:	Recombinant Proteins
Description:	Gamma-Synuclein / SNCG (1-127) human protein, 0.1 mg
Species:	Human
Expression Host:	E. coli
Expression cDNA Clone or AA Sequence:	MDVFKKGFISI AKEGVVGAVE KTKQGVTEAA EKTKEGVMYV GAKTKENVVQ SVTSVAEKTKEQANAVSEAV VSSVNTVATK TVEEAENIAV TSGVVRKEDL RPSAPQQEGV ASKEKEEVAE EAQSGGD
Predicted MW:	13.3 kDa
Concentration:	lot specific
Purity:	>95% by SDS-PAGE
Buffer:	Presentation State: Purified State: Liquid protein Buffer System: 20 mM Tris-HCl buffer (pH 7.5) containing 0.1 M NaCl
Preparation:	Liquid protein
Protein Description:	Gamma-Synuclein (Originally known as a breast cancer specific gene product, BCSG1) is an acidic neuronal protein of 127 amino acids. The protein coding region of gamma-Synuclein was amplified by RT-PCR and cloned into an E. coli expression vector. Gamma-Synuclein was overexpressed in E. coli and purified to apparent homogeneity by taking advantage of the thermosolubility of the protein and by using conventional column chromatography techniques.
Storage:	Store undiluted at 2-8°C for one month or (in aliquots) at -20°C for longer. Avoid repeated freezing and thawing.
Stability:	Shelf life: one year from despatch.
RefSeq:	<a href="#">NP_003078</a>
Locus ID:	6623
UniProt ID:	<a href="#">O76070</a> , <a href="#">Q6FHG5</a>
Cytogenetics:	10q23.2
Synonyms:	BCSG1; SR



[View online »](#)

**Summary:**

This gene encodes a member of the synuclein family of proteins which are believed to be involved in the pathogenesis of neurodegenerative diseases. Mutations in this gene have also been associated with breast tumor development. [provided by RefSeq, Jan 2010]

**Product images:**

15% SDS-PAGE (3ug)