

## Product datasheet for SA6008X

### Alpha-Synuclein / SNCA (1-60) Human Protein

#### Product data:

Product Type:	Recombinant Proteins
Description:	Alpha-Synuclein / SNCA (1-60) human recombinant protein, 0.5 mg
Species:	Human
Expression Host:	E. coli
Expression cDNA Clone or AA Sequence:	MDVFMKGLSK AKEGWAAA E KTKQGVAEAA GKTKEGVLYV GSKTKEGVH GVATVAEKT
Predicted MW:	6.149 kDa
Concentration:	lot specific
Purity:	>95% by SDS-PAGE
Buffer:	Presentation State: Purified State: Liquid protein Buffer System: 20 mM Tris-HCl buffer (pH 7.5) containing 0.1 M NaCl
Preparation:	Liquid protein
Protein Description:	A deletion mutant of alpha-synuclein (amino acids 1-60), which contains the N-terminal amphipathic domain. Syn1-60 was overexpressed in E. coli and the recombinant protein was purified to apparent homogeneity by using conventional column chromatography techniques.
Storage:	Store at 2 - 8 °C for up to one month or (in aliquots) at -20 °C. Avoid repeated freezing and thawing.
Stability:	Shelf life: one year from despatch.
RefSeq:	<a href="#">NP_000336</a>
Locus ID:	6622
UniProt ID:	<a href="#">P37840</a>
Cytogenetics:	4q22.1
Synonyms:	NACP; PARK1; PARK4; PD1



[View online »](#)

**Summary:**

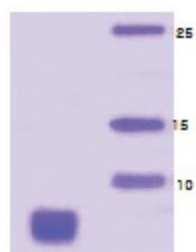
Alpha-synuclein is a member of the synuclein family, which also includes beta- and gamma-synuclein. Synucleins are abundantly expressed in the brain and alpha- and beta-synuclein inhibit phospholipase D2 selectively. SNCA may serve to integrate presynaptic signaling and membrane trafficking. Defects in SNCA have been implicated in the pathogenesis of Parkinson disease. SNCA peptides are a major component of amyloid plaques in the brains of patients with Alzheimer's disease. Alternatively spliced transcripts encoding different isoforms have been identified for this gene. [provided by RefSeq, Feb 2016]

**Protein Families:**

Druggable Genome

**Protein Pathways:**

Alzheimer's disease, Parkinson's disease

**Product images:**

15% SDS-PAGE