

Product datasheet for SA6001XFD

Alpha-Synuclein / SNCA (1-140) Human Protein

Product data:

| | |
|---------------------------------------|--|
| Product Type: | Recombinant Proteins |
| Description: | Alpha-Synuclein / SNCA (1-140) human recombinant protein, 1 mg |
| Species: | Human |
| Expression Host: | E. coli |
| Expression cDNA Clone or AA Sequence: | MDVFMKGLSK AKEGWAAA E KTKQGVAEAA GKTKEGVLYV GSKTKEGVH GVATVAEKTK EQVTNVGGAV VTGVTAVAQK TVEGAGSIAA ATGFVKKDQL GKNEEGAPQE GILEDMPVDP DNEAYEMPSE EGYQDYEPEA |
| Predicted MW: | 14.46 kDa |
| Purity: | >95% |
| Buffer: | Presentation State: Purified State: Lyophilized from a 0.2 um filtered solution Buffer System: 20 mM Tris-HCl buffer (pH 7.5), 100 mM NaCl, 1 mM MgCl ₂ |
| Endotoxin: | < 1.0 EU per 1 ug of protein (determined by LAL method) |
| Reconstitution Method: | Restore in sterile distilled water to a concentration of 1 mg/ml or less. |
| Preparation: | Lyophilized from a 0.2 um filtered solution |
| Protein Description: | Purified human recombinant alpha-Synuclein (amino acids 1-140). |
| Storage: | Upon receipt, store it immediately at 2-8°C for up to one month. For long term storage, aliquot and store at -20°C or -70°C. Avoid repeated freezing and thawing. |
| Stability: | Shelf life: one year from despatch |
| RefSeq: | NP_000336 |
| Locus ID: | 6622 |
| UniProt ID: | P37840 |
| Cytogenetics: | 4q22.1 |
| Synonyms: | NACP, PARK1 |



[View online »](#)

Summary:

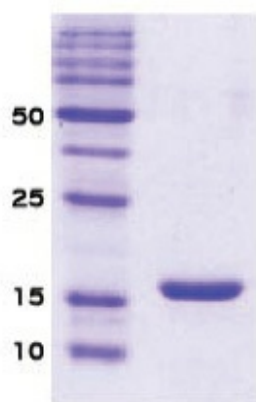
Alpha-synuclein is a member of the synuclein family, which also includes beta- and gamma-synuclein. Synucleins are abundantly expressed in the brain and alpha- and beta-synuclein inhibit phospholipase D2 selectively. SNCA may serve to integrate presynaptic signaling and membrane trafficking. Defects in SNCA have been implicated in the pathogenesis of Parkinson disease. SNCA peptides are a major component of amyloid plaques in the brains of patients with Alzheimer's disease. Alternatively spliced transcripts encoding different isoforms have been identified for this gene. [provided by RefSeq, Feb 2016]

Protein Families:

Druggable Genome

Protein Pathways:

Alzheimer's disease, Parkinson's disease

Product images:

14% SDS-PAGE (3ug)