

Product datasheet for SA6001

Alpha-Synuclein / SNCA (1-140) Human Protein

Product data:

Product Type:	Recombinant Proteins
Description:	Alpha-Synuclein / SNCA (1-140) human recombinant protein, 0.1 mg
Species:	Human
Expression Host:	E. coli
Expression cDNA Clone or AA Sequence:	MDVFMKGLSK AKEGWAAA E KTKQGVAEAA GKTKEGVLYV GSKTKEGVH GVATVAEKTK EQVTNVGGAV VTGVTAVAQK TVEGAGSIAA ATGFVKKDQL GKNEEGAPQE GILEDMPVDP DNEAYEMPSE EGYQDYEPEA
Concentration:	lot specific
Purity:	>95% pure by SDS-PAGE.
Buffer:	Presentation State: Purified State: Liquid purified protein Buffer System: 20 mM Tris-HCl buffer (pH 7.5) containing 0.1 M NaCl, 1 mM MgCl ₂
Endotoxin:	< 1.0 EU per 1 microgram of protein (determined by LAL method)
Preparation:	Liquid purified protein
Protein Description:	Purified human recombinant alpha-Synuclein (amino acids 1-140).
Note:	Real molecular weight on SDS-PAGE will be shift up (see picture below).
Storage:	Store at 2 - 8°C for up to two weeks or (in aliquots) at -20°C to -70°C. Avoid repeated freezing and thawing.
Stability:	Shelf life: one year from despatch.
RefSeq:	NP_000336
Locus ID:	6622
UniProt ID:	P37840
Cytogenetics:	4q22.1
Synonyms:	NACP; PARK1; PARK4; PD1



[View online »](#)

Summary:

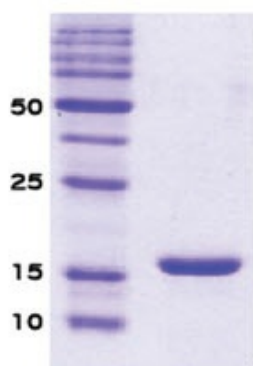
Alpha-synuclein is a member of the synuclein family, which also includes beta- and gamma-synuclein. Synucleins are abundantly expressed in the brain and alpha- and beta-synuclein inhibit phospholipase D2 selectively. SNCA may serve to integrate presynaptic signaling and membrane trafficking. Defects in SNCA have been implicated in the pathogenesis of Parkinson disease. SNCA peptides are a major component of amyloid plaques in the brains of patients with Alzheimer's disease. Alternatively spliced transcripts encoding different isoforms have been identified for this gene. [provided by RefSeq, Feb 2016]

Protein Families:

Druggable Genome

Protein Pathways:

Alzheimer's disease, Parkinson's disease

Product images:

14% SDS-PAGE (3ug)