

Product datasheet for **RR217685**

Trpm3 (NM_001191562) Rat Tagged ORF Clone

Product data:

Product Type: Expression Plasmids
Product Name: Trpm3 (NM_001191562) Rat Tagged ORF Clone
Tag: Myc-DDK
Symbol: Trpm3
Vector: pCMV6-Entry (PS100001)
E. coli Selection: Kanamycin (25 ug/mL)
Cell Selection: Neomycin
ORF Nucleotide Sequence: >RR217685 representing NM_001191562
Red=Cloning site Blue=ORF Green=Tags(s)

TTTTGTAATACGACTCACTATAGGGCGGCCGGAATTCGTCGACTGGATCCGGTACCGAGGAGATCTGCC
 GCCCGATCGCC

ATGGGCAAGAAGTGGAGGGACGCGGGCGAGATGGAGCGAGGCTGCTCTGATCGCGAGGGCAGCGCGGAGA
 GCCGCGCGCGCAGCCGACGCGCCAGCCGCGGGCAGGTTTGCCGAGTCGTGGAAAAGGTTAAGTTCCAAGCA
 GGGGTCCACCAAGCGCTCGGGACTGCCAGCACAGCAGACCCGGCTCAGAAATCCTGGATTGAAAGAGCA
 TTTTATAAAAGAGAATGTGTTACATCATACCCAGCACCAAGACCCCCATAGGTGTTGCTGTGGGCGCC
 TGATAGGCCAGCATGTCCGACTCACTCCCAGTATCTCTGTGCTTCAGAATGAGAAAAATGAGAGTCGCT
 CTCCCGAAATGACATCCAGTCTGAGAAGTGGTCTATCAGCAAACACACTCAGCTCAGCCCAACGGATGCT
 TTTGGGACTATTGAGTTCCAAGGAGGCGGTCAATCCAACAAGCCATGTATGTCCGAGTATCTTTTGATA
 CGAAACCTGATCTCTTGCTACACCTGATGACCAAGGAATGGCAACTAGAGCTTCCCAAATCTCATCTC
 TGTGCACGGAGGGCTGCAGAACTTTGAACTCCAGCCAAACTCAAGCAAGTCTTCGGGAAAGGGCTCATC
 AAAGCAGCCATGACAACCTGGAGCCTGGATCTTCACTGGAGGGTCAACACAGGTGTATCCGTCATGTGG
 GAGATGCCTTGAAGGACCACGCATCTAAGTCTCGAGGGAAGATATGCACCATAGGTATCGCACCCCTGGGG
 AATTGTGGAAAACAGGAAGACCTGATCGGAAGAGATGTAGTCCGACCATACCAGACCATGTCAAACCCCT
 ATGAGCAAGCTCACGGTTCTCAACAGCATGCACTCCCCTTTCATCCTGGCTGACAATGGGACCACGGGAA
 AATACGGGGCCGAGGTGAAACTCCGAGACAACCTGGAAAAGCACATTTCACTCCAGAAGATAAACACAAG
 AATCGGTCAAGGGGTTCCAGTGGTGGCCCTCATCGTGGAAAGGAGGCCAATGTGATCTCAATTGTTTTG
 GAATACCTTCGAGACACCCTCCTGTACCAGTCGTGGTCTGCGATGGCAGTGGACGGGCATCCGACATTC
 TGGCATTGGGCATAAATATTGAGAAGAAGGCGGTCTTATCAATGAATCTTTGAGGGACCAGCTGTTGGT
 GACAATACAGAAGACCTTACATACACCCGACCCAAGCCAGCACCTGTTTCATCATCCTCATGGAATGC
 ATGAAGAAGAAGGAATTGATCACAGTGTTCGAATGGGATCAGAAGGCCACCAGGACATTGATTTAGCTA
 TCCTGACAGCACTACTCAAAGGAGCCAATGCATCCGCCCCAGACCAGCTGAGCTTAGCATTAGCCTGGAA
 CAGAGTTGACATCGCTCGCAGCCAGATCTTTATTTACGGGCAGCAGTGGCCGGTAGGGTCCCTGGAGCAA
 GCCATGCTGGATGCCCTAGTCTGGACAGAGTGGACTTTGTGAAATTACTCATAGAAAACGGAGTAAGCA
 TGCACCGTTTTCTCACCATCTCCAGACTAGAGGAACTGTACAATACGAGACATGGGCCCTCAAATACATT
 GTACCCTTGGTCAGGGATGTCAAAAAGGGAAACCTGCCCCCGACTACAGAATCAGCCTGATAGACATT



[View online »](#)

GGCCTGGTATCGAGTACCTGATGGGTGGGGCTTACCGCTGCAACTACACACGCAAGCGCTTTCGGACCC
TCTACCACAATCTCTTTGGCCCCAAAAGGCCAAAGCCTTGAAACTGCTGGGAATGGAGGATGATATTCC
CTTGAGGAGAGGAAGAAAGACAACCTAAGAAACGTGAGGAAGAGGTGGACATAGACTTGGATGACCCTGAG
ATCAACCACCTCCCATCCCTTTCCATGAGCTGATGGTGTGGGCTGTCTCATGAAGAGGCAGAAGATGG
CCCTGTTCTTCTGGCAGCATGGAGAGGAGGCCATGGCTAAAGCCCTGGTGGCCTGCAAGCTCTGCAAAGC
CATGGCCCATGAGGCTTCTGAGAATGATATGGTGGATGACATTTCCCAAGAGCTGAACCACAACCTCCAGG
GACTTTGGCCAGCTGGCTGTGGAGCTTTTGGACCAGTCTACAAACAGGATGAGCAGCTGGCCATGAAAC
TGCTGACGTATGAGTTGAAGAAGCTGGAGCAATGCCACATGCCCTGACAGCTGGCTGTGGCTGCCAAGCACCG
TGACTTCAATGCACACACGTGCAGCCAGATGTTACTTACCGACATGTGGATGGGACGGCTCCGCATGCGA
AAGAAGCTCAGGCCTCAAGGTAATTCTGGGAATTCTACTTCTCTTCAATTCTCAGCTTGGAGTTCAAGA
ACAAAGATGACATGCCCTATATGACTCAGGCCCAAGAAATTCATCTCAAGAGAAGGAGCCGGAGGAACC
GGAGAAGCCTACAAGGAAAAAGATGAAGAGGACATGGAGCTAACAGCAATGTTGGGACGAAACAATGGG
GAGTCATCCAGAAAGAAAGACGAAGAAGAAGTTCAAAGCAGGCATCGACTAATCCCTGTGGGCCGAAAAA
TCTATGAGTTCTACAACGCACCCATTGTGAAGTTCTGGTCTACACTCTGGCGTACATTGGATACCTGAT
GCTCTTCAATTACATCGTCTGGTGAAGATGGAGCGCTGGCCTTCCACTCAGGAATGGATCGTCATCTCC
TACATCTTCACTCTGGGAATAGAGAAGATGAGAGAGATCCTGATGTCAGAGCCGGCAAGCTGCTGCAGA
AAGTCAAAGTGTGGCTGCAGGAGTACTGGAACGTCACGGACCTCATCGCCATCCTCTTCTCGGTGGG
AATGATCCTTCGTCTTCAAGACCAGCCCTTCAAGAGTGACGGGAGGGTACTACTGTGTGAACATCATT
TATTGGTATATCCGTTTACTAGACATCTTCGGCGTGAACAAGTATCTGGGCCCATACGTAATGATGATTG
GGAAAAATGATGATAGACATGATGTAATTCGTATCATTATGCTGGTGGTCTGATGAGCTTTGGGGTTCGC
CAGGCAAGCCATTCTCTTCCCAATGAGGAGCCATCTTGGAACTGGCCAAGAATATCTTCTACATGCCT
TATTGGATGATTTATGGGAAGTGTGCTGACCAGATAGACCGTAAGCAAGTTTATGATTCTCATAACAC
CAAAGTCAGCTCCCTGTGGACAGAACGAGACCCGAGAGGATGGCAAGCAATCCAGCTGCCCCATCCCAA
GACAGGACATGGATTGTGCCAGCCATCATGGCCCTGCTACTCTTAGTAGCGAACATCCTTCTGGTCAAC
CTCCTTATTGCTGTCTTCAACAATACATTTTTTGGAGTCAAGTGCATATCCAACCAAGTATGAAAAATTC
AGAGGTACCAGCTCATCATGACTTTCCATGAGAGACCAGTTTGCCTCCACCGCTCATCATCTTCAGTCA
CATGACCATGATATCCAGCATGTGTGCTGCCGATGGAGGAAGCATGAGAGTGACCCGGATGAAAGGGAC
TACGGCCTGAAACTCTTCATAACTGATGATGAGCTCAAGAAAGTACATGATTTTGAAGAGCAGTGCATAG
AGGAATATTTAGAGAGAAGGATGACCGCTTCAATTCATCAATGATGAGAGGATACGGGTTACGTCAGA
AAGGGTGGAGAACATGTCCATGAGGCTGGAGGAAGTCAATGAGAGAGAACATTCCATGAAGGCTTCACTC
CAGACTGTGGACATCCGGCTAGCACAGCTGGAGGATCTCATCGGGCGCATGGCCACTGCCCTGGAGCGCC
TAACAGGTCTGGAGCGGGCAGAGTCAACAAAATCCGCTCAAGGACCTCCTCAGACTGCACAGACCGCAGC
CTACATCGTCCGCCAGAGCAGCTTCAACAGTCAAGGAAGGGAACACCTTCAAACCTTCAAGAGAGTATAGAC
CCTGCAGGTGAGGAGACCATGTCCCAACTTCTCCAACCTTAAAGCCCGTATGCGAAGCCATTCTTTCT
ATTCGGTCAATGTGAAAGACAAAGGTGGTATAGAAAAGTTGGAGAGCATTTTCAAAGAAAGGTCCCTGAG
CTTACACCGTGTACTAGCTCCCACTCAGTAGCCAAGGAGCCCAAAGCTCCTGCAGCCCTGCAAACACC
TTGGCCATTGTTCTGATCCAGAAGACCATCGTCATGCATAGACATCTATGTCTCTGCCATGGATGAGC
TCCACTGTGATATAGACCCTCTGGATAATTCCATGAACATCCTTGGGCTGGGCGAGCCAAGCTTTTCAGC
TCTAGCACCTTCCACAGCCCTTCAAGCAGTGCCTATGCAACCTTGCACCTACAGACCACCTCCAAGC
AGGAGCATTGATTTTGAAGACCTCACCTCCATGGACACTAGATCTTTTTCTTACAGACTATACCCACCTCC
CAGAATGCCAAAACCCCTGGGACACAGACCCTCAATGTACCATACCATCGAGCGTTTCAAAGAGTACCCG
CTACCTAGCCACTACACCCTTCTTCTGGAAGAGGCCCCATTGTAAAATCCCATAGCTTTATGTTTTCT
CCTTCAAAGGAGTTACTACGCCAACTTTGGGGTGGCCGTGAAAACAGCAGAATACACAAGTATTACAGACT
GTATCGACACAAGATGTGTCATGCCCCCAAGCAATAGCTGACAGAGCCACCTTCCCGGAGGTCTCGG
AGACAAAGTGAAGATTTATCTTGTGCCACCCTGAGCGAGAAGCAGAGCTGAGCCACCCTAGCTCTGAC
AGTGAGGAAAATGAGGCCAGAGGCCGGAGAGCTGCCAATCCGATATCCTCTCAGGAGACTGAAAATGCAG
ACAGAACCCTATCCAACAACATCACAGTCCCAAGATAGAGCGGCCAACAGCTACTCGGCAGAGGAGCC
AAGCGCGCATATGCACATACCAGAAAGAGCTTCCATCAGTGACAAGCTTGATAGACAGAGGAACACA
GCAAGCCTCCGAAATCCCTTCCAGAGAAGTAAGTCTCAAGCCGGAGGGCCGAGGGGACAGCGTATCCA
TGAGAAGACTGTCTAGAACATCGGCTTTTCATAGCTTTGAGAGCAAGCACAAAC

ACGCGTACGCGGCCGCTCGAGCAGAAACTCATCTCAGAAGAGGATCTGGCAGCAATGATATCCTGGATT

ACAAGGATGACGACGATAAGGTTTAA

Protein Sequence:

>RR217685 representing NM_001191562

Red=Cloning site Green=Tags(s)

```

MGKKWRDAGEMERGCSDREGSAESRRRSRSASRGRFAESWKRLSSKQGSTKRSGLPAQQTPAQKSWIERA
FYKREC VHIIPSTKDPHRCCCGRLIGQHVGLTPSISVLQNEKNESRLSRNDIQSEKWSISKHTQLSPTDA
FGTIEFQGGGHSNKAMYVRVSFDTKPDLHLMTKEWQLELPKLLISVHGGLQNFELQPKLKQVFGKGLI
KAAMTTGAWIFTGGVNTGVIRHVGDAKDASHSRGKICTIGIAPWGIENQEDLIGRDVVRPYQTSNPN
MSKLTVLNSMHSFHLADNGTTGKYGAEVKLRRLQLEKHISLQKINTRIGQGVVVALIVEGGPNVISIVL
EYLRDTPPVVPPVCDGSGRASDILAFGHKYSEEGGLINESLRDQLLVTIQKTFYTRTQAQHLFIILMEC
MKKKELITVFRMGSEGHQDIDLAILTALLKGANASAPDQLSLALAWNVRDIARSQIFIYGGQWPVGSLEQ
AMLDALVLDREVFKLLIENGVS MHRFLTISRLEELYNTRHGPSNTLYHLVRDVKKGNLPPDYRISLIDI
GLVIEYLMGGAYRCNYTRKFRFTLYHNLFGPKRPKALKLLGMEDDIPLRRGRKTKKREEEVDIDLDDPE
INHFPPPFHELMYWAVLMKRQKMALFFWQHGEEMAKALVACKLCKAMAHEASENDMVDDISQELNHNSR
DFGQLAVELLDQSYKQDEQLAMKLLTYELKNWSNATCLQLAVA AKHRDFIAHTCSQMLLTDMWMGRRLMR
KNSGLKVLGILLPSPILSLEFKNKDDMPYMTQAQEIHLQEKEPEEPEKPTKEKDEEDMELTAMLRNNG
ESSRKKDEEEVQSRHRLIPVGRKIYEFYNAPIVKFWFYTLAYIGYLMFNIVLVKMERWPSTQEWIVIS
YIFTLGIEKMREILMSEPGKLLQKVQVWLQEYWNVTDLIAILLFSVGMILRLQDQPFSDGRVIYCVNII
YWYIRLLDIFGVNKYLGPIVMMIGKMMIDMMYFVIIMLVVLMFSGVARQAIFPNEEPSWKLAKNIFYMP
YWMIYGEVFADQIDRKQVYDSHTPKSAPCGQNETREDGKTIQLPPCKTGAWIVPAIMACYLLVANILLVN
LLIAVFNNTFFEVKSI SNQVWKFQRYQLIMTFHERPVLPPPLIIFSHMTMIFQHVCCRWRKHESDPDERD
YGLKLFITDDELKKVHDFEEQCIEEYFREKDRFNSSNDERIRVTSERVENMSMRLEE VNEREHSMKASL
QTVDIRLAQLEDLIGRMATALERLTGLERAESNKIRSRTSSDCTDAAYIVRQSSFNSQEGNTFKLQESID
PAGEETMSPTSPTLMPMRSHSFYSVNVKDKGGIEKLESIFKERSLSLHRATSSHSVAKEPKAPAAPANT
LAIVPDSRRPSSCIDIYVSAMDELHCDIDPLDNSMNILGLGEPSEFALAPSTAPSSSAYATLAPTDRPPS
RSIDFEDLTSMDTRSFSSDYTHLPECQNPWDTPPPMYHTIERSKSSRYLATTFFLLEEAPIVKSHSFMFS
PSRSYYANFGVPVKTAEYTSITDCIDTRCVNAPQAIADRAFPGGLGDKVEDLSCHPEREAELSHPSSD
SEENEARGRRANPISSQETENADRTL SNNITVPKIERANSYSAEEPSAPYAHRKSF S ISDKLDRQRNT
ASLRNPFQRSKSSKPEGRGDSVSMRRLSRTSAFHSFESKHN
    
```

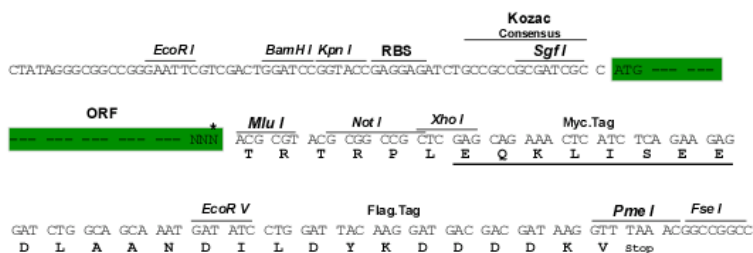
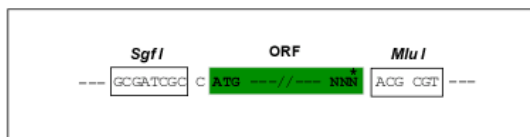
TRTRPLEQKLISEEDLAANDILDYKDDDDKV

Restriction Sites:

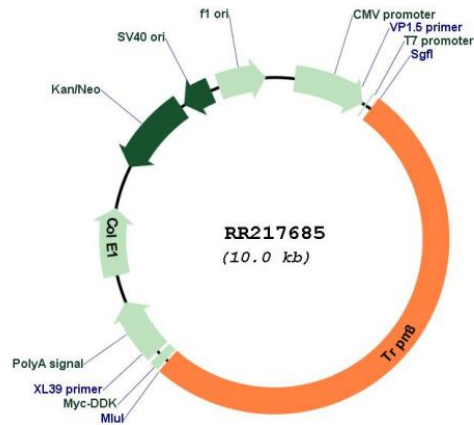
Sgfl-MluI

Cloning Scheme:

Cloning sites used for ORF Shuttling:



* The last codon before the Stop codon of the ORF

Plasmid Map:


ACCN: NM_001191562

ORF Size: 5163 bp

OTI Disclaimer: Due to the inherent nature of this plasmid, standard methods to replicate additional amounts of DNA in E. coli are highly likely to result in mutations and/or rearrangements. Therefore, OriGene does not guarantee the capability to replicate this plasmid DNA. Additional amounts of DNA can be purchased from OriGene with batch-specific, full-sequence verification at a reduced cost. Please contact our customer care team at custsupport@origene.com or by calling 301.340.3188 option 3 for pricing and delivery.

The molecular sequence of this clone aligns with the gene accession number as a point of reference only. However, individual transcript sequences of the same gene can differ through naturally occurring variations (e.g. polymorphisms), each with its own valid existence. This clone is substantially in agreement with the reference, but a complete review of all prevailing variants is recommended prior to use. [More info](#)

OTI Annotation: This clone was engineered to express the complete ORF with an expression tag. Expression varies depending on the nature of the gene.

Components: The ORF clone is ion-exchange column purified and shipped in a 2D barcoded Matrix tube containing 10ug of transfection-ready, dried plasmid DNA (reconstitute with 100 ul of water).

Reconstitution Method:

1. Centrifuge at 5,000xg for 5min.
2. Carefully open the tube and add 100ul of sterile water to dissolve the DNA.
3. Close the tube and incubate for 10 minutes at room temperature.
4. Briefly vortex the tube and then do a quick spin (less than 5000xg) to concentrate the liquid at the bottom.
5. Store the suspended plasmid at -20°C. The DNA is stable for at least one year from date of shipping when stored at -20°C.

RefSeq: [NM_001191562.1](#), [NP_001178491.1](#)

RefSeq Size: 6740 bp

RefSeq ORF: 5166 bp

Locus ID: 309407

Cytogenetics: 1q51

MW: 196.1 kDa