

Product datasheet for **RR217683**

Wnk3 (NM_001163607) Rat Tagged ORF Clone

Product data:

Product Type: Expression Plasmids
Product Name: Wnk3 (NM_001163607) Rat Tagged ORF Clone
Tag: Myc-DDK
Symbol: Wnk3
Synonyms: RGD1563131
Vector: pCMV6-Entry (PS100001)
E. coli Selection: Kanamycin (25 ug/mL)
Cell Selection: Neomycin
ORF Nucleotide Sequence: >RR217683 representing NM_001163607
Red=Cloning site Blue=ORF Green=Tags(s)

TTTTGTAATACGACTCACTATAGGGCGGCCGGAATTCGTCGACTGGATCCGGTACCGAGGAGATCTGCC
GCCCGGATCGCC

ATGGCCACTGATTCTGGGGAGCCAGCTAGCACAGAAGATTCTGAGAAGCCTGATGGAGTTTCCTTTCAA
GCAGGGTTGCCCGGGCTGTTGCACCTCTGACTGTAGAAGCTAGAATAAAGGAAAAATACAGTACCTTTTC
TGCTTCTGGGAAACCATTGAAAGAAAGAGATTTTCCGAAAGAGTGTTGAGATGACAGAAGATGACAAA
GTTGCCCAATCTCCCGCAGAGATGAAAGAAAAGTTGCAACAAATATTTCAAGAGTAGAAAAAGTTCCTA
CAATGTGCTAAGAGGTGGGCAAGAAGTAAATATGAGCAGTGTTCAAAGGCAACCTCAGAAATCCTCAA
AGATTGCTTCAAGGAGAAAAGTAAAAGGAAATGGAAGAAGAAGCAGAAATGAAGGCTGTCGCAACGTCC
CCTAGTGGCAGGTTTCTAAAATTTGATATAGAGCTGGGAAGAGGCGCTTTTAAAACAGTATATAAAGGAT
TGGACTGAAACATGGGTTGAAGTTGCTTGGTGTGAGCTACAGGACCGCAAATTAATAAGCTGAGCA
GCAACGGTTCAAAGAAGAAGCTGAGATGTTGAAAGGCCTCCAGCATCCCAATATAGTTTCGATTTTACGAT
TCATGGGAGTCCATATTGAAAGGAAAGAAATGTATTGTTTTAGTACTGAACTAATGACATCAGGAACCT
TAAAGACGTACTTAAAACGATTTAAAGTCATGAAACCAAAGTCTTAAGAAGCTGGTGCAGGCAAATTTT
AAAAGGATTGCAGTTCTTACACACAAGGACGCCTCCTATTATTCACCGGGATCTGAAATGTGACAACATT
TTCATCACAGGACCCACTGGATCTGTGAAGATTGGTGTCTGGGACTTGAACCTTAATGCGCACATCCT
TTGCTAAGAGTGTCAATGGCACTCCTGAGTTTATGGCGCCAGAGATGTATGAAGAACACTATGATGAATC
TGTAGATGTTTATGCTTTGGGATGTGTATGTTGGAAATGGCTACTTCGGAGTATCCATATTCTGAGTGC
CAGAATGCAGCACAAATATACCGTAAAGTAACCAAGTGGCATAAAACCAGCCAGCTTCAATAAAGTACAG
ACCCTGAAGTGAAGAAATAATTGAAGGATGTATTAGACAAAACAAATCTGAAAGGTTATCGATCAAGGA
TCTACTAAACCATGCATTCTTTGCTGAGGATACTGGACTGAGGGTGGAGTTAGCAGAGGAAGATGATTGC
TCAAATTCATCCTTGGCTCTAAGACTCTGGGTTGAAGATCCTAAGAAATTAAGGCAAAACATAAAGACA
ATGAAGCTATTGAATTCAGTTTCAACTAGAAGCAGATACACCTGAGGAAGTAGCGTATGAAATGGTCAA
GTCTGGATTCTTCCATGAAAGTATTCCAAAGCTGTTGCTAAGTCCATTAGGGACCGTGTGACACTGATT
AAAAAGATAAGGGAAAAGAAGCCTGCTGGATGCTTAGAGGAACGCAGGGATTCCCAGTGAAGCATGCGA



GGAATGTAATCCTCAGCAGCAGACTGCAACTTTACGACCTGCTCCTGGTCCACACAATGCGGCTGAGTG
TGAAGAAACAGAAGTTGATCAACATGTTTCGACAGCAGCTTGACAAGGCAAAGCAGCAGCAGCCCTCC
TCTGTTAGGGGTGACACTTCATCTGAACCAGCAGCTGGACCAGTTCTACATTAGATACTTCAAGTCACC
CCACTGTAGCCTATTCTTCAAACCAGGCAACTAGTTCTCAGGAGCAGCCAAAGCTGACTCGGTCTCCAGT
TTTGCCTGTGGTCAAGGTCAGTCTTCTGTTATGCCATATATGCTGCTGGACCTGCAGTTGCTTCACAG
TCCCAGATTTCTCCATTAACATCCAGAAGGCTCACAGATAAAGCCTGTATCCCAACCAATTGGAGCTG
AACACAAGCAACTCCTCAAATCCAGATTTTGTTCGAAGCTTGAATCAAGATGTGACACTGTGAAAGA
AAACACCAATAGCCCTGATACCCCAAGTGAAATGGCAAACAGGATCGGATCAAACAAAGAAGAGCCTCC
TGTCCTCCGACCAGAGAAGGGGACTAAATTCAGCTTACTGTCCTTCAGGTCTCAGTCTCTGGGGACAACA
TGGTGGAAATGTCAGCTGGAAACACATAACAACAAGATGGTACATTCAAGTTTGTGTTGATGGTATGC
ACCTGAGGATATCGCTGACTATATGACAGGATCATCTGAACAAGTATTGATAAATCTGCATCCACTCAA
ACTAGCAATGAATCTGCTCCTCAGTCAATCCAGTTGGTCGCTGGCGGTTTTGTATCAACCAAACAATAA
AAAATCGTGAGGCGCAGTCTCCTCCTCCCTTCAGCCTCCGTTGGCTATGGTGCCTGGGTTACATCCATT
TCCTAATAACACAAGTAATCAAGAAATATCACAGGACACACTGTTCACTGTTCCAGGCCATCATGTAGTT
TTCACCTCCAAGTTAGATGGTAAGATTGGTGAACGTGCTAGTGTAGAAACGGAGCAGACGAGTGTCCCT
ATCAAGCAGAAGATGACAACTAAAGGCCACCAGCTACTGATACTTCCAATTATTCTGCTACTTTGGTGTG
TCCAGATCCAGCTGGATGTGAGGCACTACCAGCCAAGCAGGCATGTTTACATACATATCCATGTGTCAG
CAAGCTGCTGTTCCGGCTGATGTGCTTATGTCCTCCTGGTGAATCAGTTCAGATTGGCAGTAATGCTG
TTGTAACGTCACTACTTGTATCTTCTGATCAAAAGCCTCAATCCTTATCAGTACAGCAGCCAACATAGA
TGCAGAGTTTATTTACACAAGAAGGAGAAACACAGTAACTCTGAAACGAGTTCTCCTAAGGCTGTCCGT
GCCACTCAGACTCCTGGCTTTGAACCAACTGTGCTTCTACCTGCGACTATCCTGGAATCAGATGGGGAAC
GACCTCCAAAAATGGAGTTTACAGACAATCGAATTAACAACTGGATGAAAAATTAAGAACTGCTCTA
TCAAGAGCACAGCATTTCTACATCTGCTGAGAGTCAAGGATACTCAAAGCATAGACTCTCCATTT
TCTTCTGCTGAAGATATACTATCCTCCCAATGCCAGAAGTATAGCCATCAGTCACTGTGGGATTC
AAGATAGCCAAGCACAATCCCGAATTTCCAACCAACAGGCTCTAAGATTCTATCGAATGTGGTCAAG
TCAGCCTGCTCATATACCAGTGCTCAAAAGAGACCTGAATGTGATAAATTCTGTACCCAGCGAGCTATGT
TTACACGAGATGTCCCGAGTGTCTTCACTTCCAGGGATCCAGAGGCCTATCCTGCTGCTGTGCAAGCG
ATGGAACCATTCTGTCAGACAGGAGGTGGATATTTGGCTAAGCTTTACTTGTCTAGTCTCAAAAA
TCCTATTAGCAGGAAATCCTGGACTCGAAAATTAAGCTGGGCATACAGGCTACGGCAGTCAACCAGC
TTTTTCAAGAGATCAAAGTTTCGTCAAGTGAAACAGAAGATAAAAGATCAGCAATTGCTTCTGATCCCA
TTCGGCTGACACGGGAGTTCTCAGCTGATACTAGGGCTTTGAGTAGATGTAAGCGATGAGTGGATCATT
TCAGCGGGGTCCGTTCCAGGTGATTACAGTTCCCTCAGCAGCAGCCAGTGAATGATGCTTTTGGAAAA
GAACATAGACCGCATCGAAGAAAACGACAGCCAGTCTAACGAGCAAGCACTAACCTTTACTGAAGCTG
CAGTGACACAGTTGATCGAAGTGGAACTGCCATACCCACTCATAAAGCTTCAAGTTTCTTCAAAAAGTT
ACGAACCTTTTATGAAACCTTTAAAGAAGATAAAGGAGACCTGAACAAGGTGACATCTTATCTTTGAGC
ACAGCTCGTGAGACCAGTGTGCTTTCAGTGACAACAGAAAAGAATGTGGAAGAACTTCTACTACAGGAA
TTAGTGTGCACTGGGTCTGAAATGTTAGATAAAGAAAAGATGAATCAACTCCTGGGAAACAGACATG
TACTAATGAATTTTCCAGCCACTCCTGCTGGCAGTGGAAAGTCACTTCTACTCTCCATCTTCTCAATGAGCAGT
CAGCATTTACCAGCCCGTCTCAAACACAGAGTTCACCTTCTACTCTCCATCTTCTCAATGAGCAGTG
ACAATGAATCAGAAATCGAGGATGAGGACTTGAAGCGGAGCTTCAAGATTACGGGAAAAACACATTCA
AGAGGTGGTCACTTCAAACACAGCAGAATAAAGAGCTACAGGAGCTCTATGAACGCTTCGAGCAACT
AAAGACAGCAAAGCGCAATCTTCAAGAGTTCCCATGCCACCTGCATCACCACGCAGGCCAAGATCCTTCA
AAAGCAAACCTCGAAGCCGCCCCAGTCTTGGACACATTCGGACAATCTCGTTGTTGTAAGAGATGTGCA
GCGTGCGGAGAGTAATACTGCGCCACGCCAGCAATCGCCAGCCAGTAAGAAGGGGATGTTACAGATGAT
TTACACAAGCTGGTGGATGACTGGACAAGAGAACAGTAGGAAATTTTCTAGCAAGCCAAGTTTAAACC
AACTCAAACAGAGCCAACAAAAATCAGAGGCAGAAAACCTGGAACAAGTTGCATGAAAGCACTCCATCTAC
TGTGGGATACACATCAACCTGGATTTCTTCTCTCTCCAAATTCGCGGAGCTGCCCGTCTTCTTGCCA
CATGGACTCCCACTCCCTTCAATTTCTGGGCCATTAGCGTCTATGGAATGCCTCATGCTTGTGAGTACA
ATCCCGTAGGCGCCGCAAGCTATCCAGTACAGTGGGTTGGGATTTCCGGGAGCAGCAGCAATCCGTAGT
GCTTCTACCCAACTGCGGGGACTCTTCCAGCCTGGGATGAATCTGCAGTCAATTTCCAGCTCCACCAGTG
CAGAACCACCTTCAATCCCTCTGGTCCCAAA

ACGCGTACGCGGCCGCTCGAGCAGAAACTCATCTCAGAAGAGGATCTGGCAGCAAATGATATCCTGGATT
ACAAGGATGACGACGATAAGGTTTAA

Protein Sequence:

>RR217683 representing NM_001163607
Red=Cloning site Green=Tags(s)

MATDSGEPASTEDSEKPDGVSFQSRVARAVAPLTVEARIKEKYSTFSASGETIERKRFFRKSVEMTEDDK
VAQSSRRDERKVATNISRVKVPNTVLGGQEVKYEQCSKATSESSKDCFKTEKEMEEEAEMKAVATS
PSGRFLKFDIELGRGAFKTVYKGLDTETWVEVAWCELQDRKLTAKAEQRFKEEAEMKGLQHPNIVRFYD
SWESILKGGKCIVLVTELMSTGLTKYLKRFKVMKPKVLRSWCRQILKGLQFLHTRTPPIIHRDLKCDNI
FITGPTGSVKIGDLGLATLMRTSFAKSVIGTPEFMAPEMYEEHYDESVDVYAFGMCMLEMATSEYPYSEC
QNAAQIYRKVTSGIKPAFNVKTDPEVKEIEGCIQNKSERLSIKDLLNHAFFAEDTGLRVELAEEDDC
SNSSLALRLWVEDPKLKGKHKDNEAIEFNFLEADTPEEVAYEMVKSQGFHESDSKAVAKSIRDVTLI
KKIREKKPAGCLEERRDSQCKHARNVNPQQQTATLRPAPGPHNAACEETEVDQHVRRQLVQGAQQQPS
SVRGDTSSEPAAGPVLHSDTSSHPTVAYSSNQATSSQECPKLTRSPVLPVVQGGQSSVMPYIYAAGPAVASQ
SQISPLTIQKVSQIKPVSQPIGAEQQATPPNPDFVRSLNQDVTSVKENTNSPDTSPGNGKQDRKQRRAS
CPRPEKGTQFQLTVLQVSVSGDNMVEQCLETHNNKMVTFKFDVDGDAPEDIADYMTGSSEQVLSASTQ
TSNESAPQSSPVGRWRF CINQTIKNREASPPSLQPSVAMVPLHFPNNTSNQEI SQDTLFTVPGHHVV
FTSKLDGKIGERASVETEQTSPYQAEDDKLKAPATDTSNYSATLVCPDPAGCEALTSQAGMFIPTYPCQ
QAAVPADVLMSHPGESVQIGSNVVTSLVSSDQKQSLSVQQTIDAEIFSQEGETTVNSETSSPKAVG
ATQTPGFPTVLLPATILESDGERPPKMEFTDNRIKTLDEKLRNLLYQEHSTICPESQKDTQSIDSFP
SSSAEDILSSPMPEVIAISHCGIQDSQAQSPNFQPTGSKILSNVAASQPAHIPVLKRDNLNVTSPSEL
LHEMSPDASLPGDPEAYPAAVSSDGTIHLQTTGGGYFGLSFTCPSLKNPISRKSWTRKLSWAYRLRQSTS
FFKRSKVRQVETEDKRSATASDP IPL TREF SADTRAL SRCKAMSGSFQRGRFQVITVPQQQPVKMMFSFGK
EHRPPSKTTAQSNEQALTFTEAAVTQLIEVEPAIPTHKASVSSQKLRTLYETFKEDKGDPEQGDILSLS
TARETSVSSVTTEKNVEETSTTGISVQSGSEMLEDKEKDESTPGKQCTNEFSATPAGSGKSVAKAAPKSG
QHLPARAQTSLLFYSPSSPMSSDNESEIEDEDLKAELQRLREKHIQEVVSLQTQQNKELQELYERLRAT
KDSKAQSSSEVMPASPAPRRPRSFKSLRSRQSLTHSDNLVVVKDVQRAESNTAPRQQSPASKKGMFTDD
LHKLVDWDTRETVGNFSPKPSLNQLKQSQQKSEAENWNKLHSTPSTVGYTSTWISSLSQIRGAAPSSLP
HGLPLPSFPGPLASYGMPHACQYNPVGAASYPVQWVIGSAAQQSVVLPQTQSGGLFQPGMNLQSFAPPV
QNPPSIPPGPK

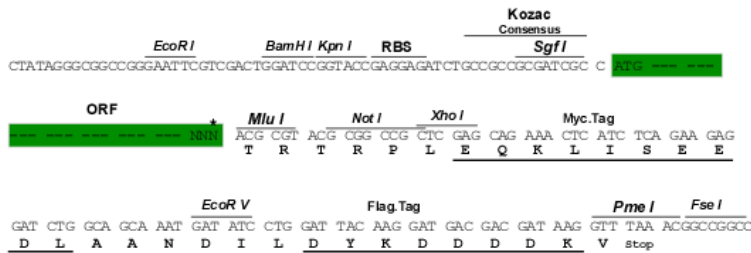
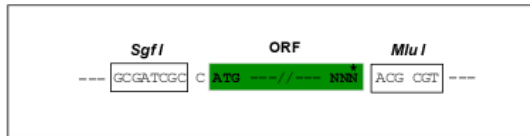
TRTRPLEQKLISEEDLAANDILDYKDDDDKV

Restriction Sites:

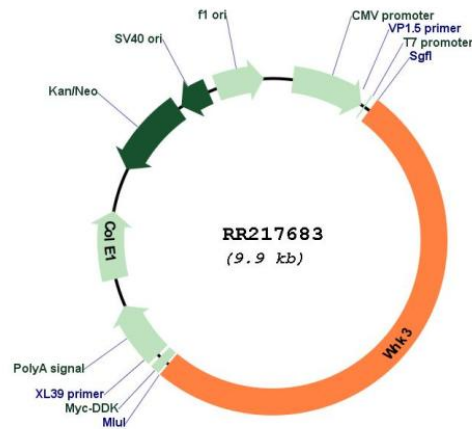
SgfI-MluI

Cloning Scheme:

Cloning sites used for ORF Shuttling:



Plasmid Map:



ACCN: NM_001163607

ORF Size: 5073 bp

OTI Disclaimer: The molecular sequence of this clone aligns with the gene accession number as a point of reference only. However, individual transcript sequences of the same gene can differ through naturally occurring variations (e.g. polymorphisms), each with its own valid existence. This clone is substantially in agreement with the reference, but a complete review of all prevailing variants is recommended prior to use. [More info](#)

OTI Annotation: This clone was engineered to express the complete ORF with an expression tag. Expression varies depending on the nature of the gene.

Components:	The ORF clone is ion-exchange column purified and shipped in a 2D barcoded Matrix tube containing 10ug of transfection-ready, dried plasmid DNA (reconstitute with 100 ul of water).
Reconstitution Method:	<ol style="list-style-type: none">1. Centrifuge at 5,000xg for 5min.2. Carefully open the tube and add 100ul of sterile water to dissolve the DNA.3. Close the tube and incubate for 10 minutes at room temperature.4. Briefly vortex the tube and then do a quick spin (less than 5000xg) to concentrate the liquid at the bottom.5. Store the suspended plasmid at -20°C. The DNA is stable for at least one year from date of shipping when stored at -20°C.
RefSeq:	<u>NM_001163607.1, NP_001157079.1</u>
RefSeq Size:	5076 bp
RefSeq ORF:	5076 bp
Locus ID:	317420
Cytogenetics:	Xq12
MW:	185.8 kDa