

Product datasheet for RR217682

Kdm5a (NM_001277177) Rat Tagged ORF Clone

Product data:

Product Type:	Expression Plasmids
Product Name:	Kdm5a (NM_001277177) Rat Tagged ORF Clone
Tag:	Myc-DDK
Symbol:	Kdm5a
Synonyms:	Jarid1a
Vector:	pCMV6-Entry (PS100001)
E. coli Selection:	Kanamycin (25 ug/mL)
Cell Selection:	Neomycin
ORF Nucleotide Sequence:	>RR217682 representing NM_001277177 Red=Cloning site Blue=ORF Green=Tags(s)

TTTTGTAATACGACTCACTATAGGGCGGCCGGAATTCGTCGACTGGATCCGGTACCGAGGAGATCTGCC
GCC**CGATCGCC**

ATGGCGGGCGTGGGCCCGGGGGCTACGCGCGGAGTTCGTGCCCGCCCGAGTGCCCGGTCTTTGAGC
CCAGTTGGGAGGAGTTCACAGACCCGCTAAGTTTTATCGGTGCGATCCGGCTCTGGCTGAGAAAACCTGG
CATCTGCAAAATCCGTCCACCCAAGGATTGGCAACCTCCATTTGCTTGTGAAGTAAAAACCTTCCGATTC
ACTCCCAGAGTCCAGCGCTGAATGAACCTGAGGCAATGACTAGAGTAAGATTGGACTTCTTGGATCAAC
TGGCAAAATTTGGGAACCTCAAGGATCTACATTGAAGATTTCCCGTGGTGGAGAGAAAAATCCTGGATTT
GTATGCTTTAAGCAAGATTGTTGCCAGCAAAGGAGTTTTGAAATAGTCACCAAAGAGAAGAAATGGTCT
AAAGTGGGTAGCCGTTTGGGATATCTGCCAGGAAAAGGAACTGGGTCTCTTTTGAAGTCACACTATGAAA
GAATTCTTACCCATATGAGCTTTTCCAATCTGGTGTGACGCTTATGGGTGTACAAATGCCTGATTTAGA
TCTTAAGGAAAAAGTTGAAGCTGAGGTTCTCAGTACTGACATCCAGCCTTCCCAGAGCGGGGAACAAGA
ATGAATATCCACCAAAGAGAACAAGACGAGTTAAATCCAGTCAGACTCTGGAGAAGTAAATAGAAATA
CAGAAGTGAAGAACTTCAGATTTTGGGGCTGGACCCAAAGTAGTAGGCTGGCAGTAGGAGCAAAAGA
TAAAGAAGATGAGGTACCCGAAGACGAAAGTTACCAACAGGTGAGATGCATTTAACATGCAGATGAGA
CAACGAAAGGAACTCTCTCTGTTAACTTTGTCGATCTCTATGTTTGCATGTTTTGTGGTCGAGGAAACA
ATGAGGATAAACTGCTTTTGTGTGACGGGTGTGATGACAGCTACCATAACATTTTGTCTGCTTCCACCACT
TCCTGATGTGCCAAAGGAGACTGGAGGTGCCTAAATGTGTTGCTGAGGAATGTAAACAACTCGAGAA
GCCTTTGGATTTGAGCAAGCTATAAGAGAATATACACTTCAAAGCTTCGGAGAGATGGCAGATAATTTTA
AGTCTGATTTTCAATATGCCAGTGCATATGGTTCCTACAGAGCTAGTAGAAAAGGAGTCTGGCGGCT
AGTAAGTAGTATTGAAGAAGACGTCATTGTAGAGTATGGAGCTGATATCTTCAAAGATTTTGGAAAGT
GGATTTCTATAAAGGATGGTCAGAGAAAGATGTTACCAGAAGAGGAGGAGTATGCACCTTCTGGTTGGA
ATTTGAATAACATGCCTGTTCTGGAGCAGTCTGTTCTTGCTCATATTAATGTGGACATTTCTGGTATGAA
GGTGCCGTGGCTCTATGTGGAAATGTGCTTTTCTTCTTTTGTGGCATATTGAAGATCACTGGAGTTAT
TCAATTAACACTTGCATTGGGGCGAGCCAAAGACATGGTATGGTGTACCATCTCATGCTGCAGAACAAAC



[View online >](#)

TGGAGGAGGTGATGAGGGAGCTGGCCCCTGAGTTATTTGAATCACAGCCTGACCTCCTACATCAGTTAGT
AACCATCATGAACCCAAATGTGCTCATGGAGCATGGTGTGCCTGTGTACAGAACTAATCAGTGTGCTGGA
GAGTTTGTGGTGACGTTTCTCGTGCCTATCACTCTGGATTTAACCCAGGGATACAACCTTTGCTGAAGCCG
TGAACCTCTGACTGCTGACTGGTTGCCATTGGACGTCAGTGTGTAATCACTATCGACGGCTGAGGCG
CCATTGTGCTTTTACATGAGGAACCTATTTCAAGATGGCAGCAGATCCAGAATGCTTAGATGTGGGG
CTGGCTGCCATGGTATGCAAAGAGTTGACTCTCATGACTGAAGAAGAAACACGATTGAGGGAATCGGTTG
TTCAAATGGGTGTCGTGATGTCAGAAGAAGTCTTCGAACCTGTTCCCTGATGATGAGCCGACGTTG
AGCATGCAGAACCACATGTTTTCTCTCAGCTCTCACATGCTCCTGTAATCCAGAGCGACTTGATGTTTG
TATCATCCAACCTGATTTGTGCTCCTGCCCATGCAGAACAATGTCTTAGGTACCGATACCCACTTGAAG
ACCTCCCATCTCTGCTTTATGGTGTCAAAGTGAGAGCACAGTCTATGACACTTGGGTCAATCGTGTAC
AGAAGCATTATCAGTAGCTTCAACCATAAGAAAGATTTGATTGAATTGAGAGTAATGCTGGAAGATGCT
GAGGATAGGAAATACCCAGAGAATGATCTCTTCGAAAGCTCAGGGATGCGGTAAAAGAAGCTGAGACCT
GTGGTTCTGTGGCTCAGTCTCTGAGCAAAAAACAAAAACACAGGCAGAGCTCAGATAGTGGGAAGAC
TCGGACCAAACTGACAGTAGAAGATTGAAGGCCCTTTGTCCAACAACCTGTTAGTCTTCCGTGTGCATC
AGCCAAACTCGACAAGTAAAGAATCTGCTGGATGATGTAGAAGAAATTCATGAACGTGCCAGGAGGCCA
TGATGGATGAAACTCCAGATTCTTCAAACCTCAAAGTGTAAATAGACATGGGCTCTAGTCTCTATGTGGA
ACTACCTGAATTGCCCGACTAAAGCAAGAGCTACAGCAGGCTCGGTGGCTGGATGAAGTAAAGACTGACT
CTATCAGACCCACAACAAGTCACTTTGGATGTCATGAAGAAATGATTGACTCTGGGGTAGGCTTGGCAC
CTCACCATGCTGTGGAAGGCAATGGCTGAACACAGGAACCTTCTACAGTCTCTGAACGATGGGAAGA
GAAGGCGAAGGTCTGCCTGCAGGCAAGACCACGGCACAGTATGGCAAATTTAGAAAATATTGTAATGAA
GCCAAGAACATCCAGCCTTTCTACCAATGTGTGTCTTAAAAGAAGCCTTACAAAAGGCTCGTGAAT
GGACAGCTAAAGTGAAGCTATTCAGAGCGCAGCAACTATGCTTACTTGAACAGCTTGAGAGCTTGTCT
TGCTAAAGGACGCCCTATCCCTGTGCGCTCGATGCCTTCAAGTGGAGTCAACAAGTGCAGCAGCGG
CGAGCCTGGAGGAGCGGACGGGGCGGACCTTCCCTTAAAGAAGAATTCAGGCATACATTGTTACAGGTGC
TAAGTCCACGAACAGACATTGGTGTATATGGCAGTGGCAAAAAACAGAAGGAAAAAGTAAAAAGAAATAA
AGAAAAAGAAAAGGAGAAGGACCTAGACCTTGAACCTTTGAGTGACTTAGAAGAAGGACTGGAGGAGACG
AGGGACGCAGCCATGGTGGTGGCAGTTTTCAAAGAACGAGAACAAGGAGATTGAAGCCATGCATTCCC
TCAGAGCAGCCAACTAGCCAAGATGACCATTGTGGACCGCATAGAAGAAGTAAAGTTTTGTATTTGCCG
CAAGACAGCGAGTGGTTTATGCTACAGTGTGAGCTCTGCAAAGACTGGTTCCATAATGGCTGTGTTCCC
CTTCTAAGTCAAGTCCAGAAAAGGGATCCAGCTGGCAAGCCAAAGACGTAATTCCTTTGCCCTC
TCTGCATGAGATCCCGGAGGCCGAGGCTAGAGACTATTCTGCTACTCCTGGTATCCCTTCAGAAGTTGCC
TGTACGATTGCCTGAAGGAGAAGCACTGCAGTGTGACAGAGCGTGCTATGAGTTGGCAAGATAGAGCA
CGACAAGCTTTAGCCACAGATGAACTGTCTTCTGCCCTGGCCAAACTCTCTGTGTTAAGCCAGCGTATGG
TAGAACAGCAGCCCGAGAAAAAAGTAAAGATTATCAGTGCAGAACTCCAGAAAGCAGCCGCCAATCC
AGACTTACAGGGACACTTACCTAGTTTCCAGCAGTCTGCTTTAACCCGGTGGTGAAGCAGTGTATCCTCT
TCCCCCAACCAAGCGATGGACTATGATGATGAAGAAACAGACTCTGATGAAGATATTCGAGAGACATATG
GCTATGACATGAAGGATACAGCCAGTGTAAAGTCTCTAGCAGTCTGGAACCAATCTCTTTTGGCATGA
AGAGATTCTATCAAATCGGAGGAAGTGGTGACCCACATGTGGACAGCACCTTCACTCTGTGCAGAGCAT
GCATATTTCTCTGCTTCTAAGAGTTGTTCTCAAGTTCTAGCACTCCAAGAAAGCAGCTCGGAAGAGCC
CTTTGGTTCCCAGAAGTTTGGAGCCTCCAGTATTAGAATTGCTCCTGGAGCAAAAGCCAGTTGGAAGA
ACTCATGATGGTTGGAGACCTCCTAGAAGTGTCTCTGGATGAGACACAACACATATGGCGGATTTTGCAG
GCCACACATCCACCCTCAGAGGACAGATTCTTACATATCATGGAGGATGATAGCGTAGAAGAGAAACCAT
TAAAAATGAAAGGAAAGGATTCTTCAAGAGAAGAAACGGAAGCGGAAATAGAAAAGGTAGAACAGTTTTT
TGGAGAAGGAAAACAGAAGACCAAGGAGCTAAAGAAAATAGATAAACCTAAAAAGAAGAAATTAATAA
AATGTGGACAAAACAAAAGAGCTGAATAAATTGGCTAAGAAGTTAGCAAAAAGAAGAAGAGCGAAAGAAA
AGAAAGAAAAGGCTGCTGCAGCCAAAGTGGAGCTTGCAAAAGAGACCCGAGAAGAAAAGAGAGAGAAA
GGTGTGATATCCCTTCAAAGTATGACTGGTGGCGCAGAGGAGTCTGATGATGAGAATGCTGTATGT
GCAGCACAGAAGTCCAAAGGCCGTGAAGGACAAGGTAGACTGGGTACAATGTGATGGTGGCTGTGATG
AGTGGTTTCATCAAGTTTGTGTTGGTGTATCCCCAGAAATGGCTGAAAATGAAGATTACATCTGTATAAA
CTGTGCAAGAAGCAGGGGCCAGATAGCCAGGCCACGCACCACCTCCTCCCTTCATAATGAGCTACAAA
CTACCAATGGAGGATCTTAAAGAGACCAGT

ACGCGTACGCGGCCGCTCGAGCAGAAACTCATCTCAGAAGAGGATCTGGCAGCAAATGATATCCTGGATT
ACAAGGATGACGACGATAAGGTTTAA

Protein Sequence:

>RR217682 representing NM_001277177
Red=Cloning site Green=Tags(s)

MAGVGGGYAAEFVPPPECPVFEPSWEEFTDPLSFIGRIRPLAEKTGICKIRPPKDWQPPFACEVKTFRF
TPRVQRLNELEAMTRVRLDFLDQLAKFWELQGSTLKIPVVERKILDLYALSKIVASKGGFEIVTKEKKWS
KVGSRLLGYLPGKGTGSLKSHYERILYPYELFQSGVSLMGVQMPDLDLKEKVEAEVLSTDIQSPERGTR
MNIPPKRTRRVKSSQSDSSEVNRNTELEKLLQIFGAGPKVVLAVGAKDKEDVTRRRKVTNRSDAFNMQMR
QRKGTLSVNFVDLYVCMFCGRGNNEKLLCDGCDSDYHTFCLLPPLPDVPGKDWRCPCVAAEENKPRE
AFGFEQAIREYTLQSGEMADNFKSDYFNMPVHMVPTLVEKEFWRLVSSIEEDVIVEYGADISSKDFGS
GFPKIDGQRKMLPEEEYALSGWNLNMPVLEQSVLAHINVDISGMKVPWLYVGMCFSSFCWHIEDHWSY
SINYLHWGEPKTYWGVPSHAAEQLEEVRELAPLFEQSPDLLHQLVTIMNPVLMHGVPPVYRTNQCAG
EFVVTFFPRAYHSGFNQGYNAEAVNFCTADWLPVIGRQCVNHRRRRLRRHCVFSHEELIFKMAADPECLDVG
LAAMVCKELTLMTEEETRLRESVVMGVVSEEEVFELVPDDERQCSACRTTCFLSALTCSCNPERLVCL
YHPTDLCSCPMQNKCLRYRPLEDLPSLLYGKVKVRAQSYDTWVNRVTEALSASFNHKDLIELRVLEDA
EDRKYPENDLFRKLRDAVKEAETCGSVAQLLLSKKQKHRQSSDSGKTRTKLVEELKAFVQQLVSLPCVI
SQTRQVKNLDDVEEFHERAQEAMMDETPDSSKLQVLIDMGSSLYVELPELPRKQELQARWLDEVRLT
LSDPQQVTLDMKKLIDSGVGLAPHHAVEKAMAELOELLTVSERWEEKAKVCLQARPRHSMANLENIVNE
AKNIPAFLPNVLSLKEALQKAREWAKVEAIQSGSNYAYLEQLESLSAKGRPIPVRDLALPQVESQVAAA
RAWRERTGRTFLKKNSSHTLLQVLSRPTDIGNVYSGKNNRKKVKEIEIEKEKEDLDLEPLSDLEEGLEET
RDAAMVAVFKEREQKEIEAMHSLRAANLAKMTIVDRIEEVKFCICRKTASGFMLQCELCKDWFHNGCVP
LPKSGSQKKGSSWQAKDVKFLCPLCMRSPRPLETILSLLVSLQKLPVRLPEGEALQCLTERAMSWQDRA
RQALATDELSALAKLSVL SQRMVQAAREKTEKII SAELQKAAANPDLQGHLP SFQQSFAFNRVSSVSS
SPHQAMDYDDEETDSEDIETYGDMKDTASVKSSSSLEPNLFCDEEIPKSEEVVTMMWTAPSFCAEH
AYSSASKSCSQSSSTPRKQPRKSPLVPRSLPEPVELESPGAKAQLLEELMMVGDLELVSLDETQHIWRILQ
ATHPPSEDRFLHIMEDDSVEEKPLKMKGKDSSEKKRKRKLEKVEQFFGEGKQKTELKKIDPKKKKKLKL
NVDKSKELNKLAKLAKKEERKKKKEKAAAKVELAKESTEKKRERKVL DIPSKYDWSGAESDDENAVC
AAQNCQRPCKDKVDWVQCDGGCDEWFHQVCVGVSPEMAENEDYICINCAKKQGPDSFGHAPPPPFIMSYK
LPMEDLKETS

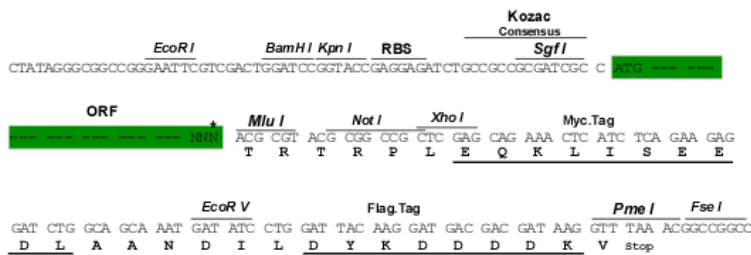
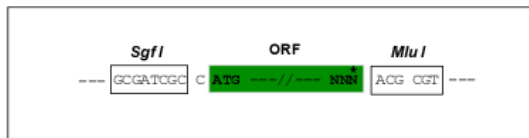
TRTRPLEQKLISEEDLAANDILDYKDDDDKV

Restriction Sites:

Sgfl-MluI

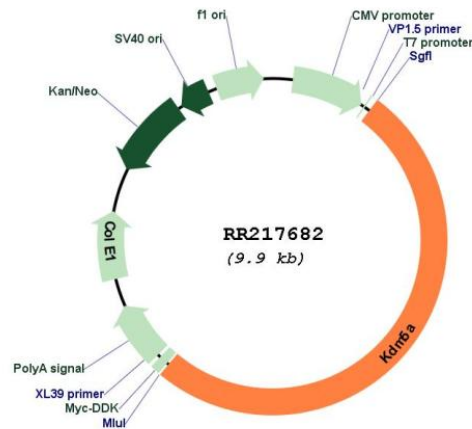
Cloning Scheme:

Cloning sites used for ORF Shuttling:



* The last codon before the Stop codon of the ORF

Plasmid Map:



ACCN: NM_001277177

ORF Size: 5070 bp

OTI Disclaimer: The molecular sequence of this clone aligns with the gene accession number as a point of reference only. However, individual transcript sequences of the same gene can differ through naturally occurring variations (e.g. polymorphisms), each with its own valid existence. This clone is substantially in agreement with the reference, but a complete review of all prevailing variants is recommended prior to use. [More info](#)

OTI Annotation: This clone was engineered to express the complete ORF with an expression tag. Expression varies depending on the nature of the gene.

Components:	The ORF clone is ion-exchange column purified and shipped in a 2D barcoded Matrix tube containing 10ug of transfection-ready, dried plasmid DNA (reconstitute with 100 ul of water).
Reconstitution Method:	<ol style="list-style-type: none">1. Centrifuge at 5,000xg for 5min.2. Carefully open the tube and add 100ul of sterile water to dissolve the DNA.3. Close the tube and incubate for 10 minutes at room temperature.4. Briefly vortex the tube and then do a quick spin (less than 5000xg) to concentrate the liquid at the bottom.5. Store the suspended plasmid at -20°C. The DNA is stable for at least one year from date of shipping when stored at -20°C.
RefSeq:	<u>NM_001277177.1, NP_001264106.1</u>
RefSeq Size:	10937 bp
RefSeq ORF:	5073 bp
Locus ID:	312678
Cytogenetics:	4q42
MW:	192 kDa