

Product datasheet for **RR217654**

Wdr62 (NM_001191623) Rat Tagged ORF Clone

Product data:

Product Type:	Expression Plasmids
Product Name:	Wdr62 (NM_001191623) Rat Tagged ORF Clone
Tag:	Myc-DDK
Symbol:	Wdr62
Synonyms:	RGD1306714
Vector:	pCMV6-Entry (PS100001)
E. coli Selection:	Kanamycin (25 ug/mL)
Cell Selection:	Neomycin
ORF Nucleotide Sequence:	>RR217654 representing NM_001191623 Red=Cloning site Blue=ORF Green=Tags(s)

TTTTGTAATACGACTCACTATAGGGCGGCCGGAATTCGTCGACTGGATCCGGTACCGAGGAGATCTGCC
GCC**CGGATCGCC**

ATGATGGCTGCCTTAGCGGCCGGAGGTTACGCGCGGAGTGACACGATAGAAAAGCTGTCTCTGTCATGG
CGGGAGTTCGGCGCGGAGAAACCAGTCTCCCGCCTCTGCCACCCTCTGCCTCCGGCGGGGAC
GCGACTCGCGGGCTCCCGAGGACACTGTGCAGAACCGGTGACACTTGAGAAGGTGCTTGGCATTACA
GCCAGAACAGCAGCGGGCTCACCTGTGACCCTGGCACAGGCCATGTGGCCTACTTAGCAGGCTGTGTGG
TGGTGGTCTTGAACCCCAAGGAGAACAAGCAGCAACATATATTTAACACTACCAGGAAGTCCCTGAGTGC
TCTGGCCTTCTCCCGAGATGGGAAGTACATAGTGACAGGAGAGAATGGGCACCGGCCAGCTGTGCGCATC
TGGGATGTGGAAGAGAAGACTCAGGTGGCAGAGATGCTGGGCCATAAGTATGGTGTGGCCTGTGTGGCCT
TCTCACCAATATGAAGCACATCGTGTCCATGGGCTACCAACATGACATGGTCTCAATGTTTGGGACTG
GAAGAAAGACATTGTGGTGGCTTCCAACAAGGTGTCGTGTCGAGTCATCGCCCTCTCTTCTCTGAGGAC
AGCAGCTATTTTGTCACTGTTGGCAATCGGCATGTTAGGTTTTGGTCTTAGAAGCCTACAGAGGCCA
AGGTAACCAGCACAAATGCCCTGGTAGGGCTCAGGCATCCTGGGTGAGCTGCACAACAATATCTTTTGG
TGGCGTGGCCTGCGGCCGGGGCCGGATGGCAGGCAATACCTTCTGTGTCTACTCTGGCCTCCTCTGC
CAGTTCATGAGAAGAGGGTACTGGACAAGTGGATCAACCTAAAGGTCTCCTTGTCTTCTGCTCTGTG
TCAGTGACGAGTTGATCTTCTGTGGATGCACAGACGGGATAGTCCGCATCTTCCAGGCCACAGCCTGCT
CTACCTCACGAACCTGCCAAACCGCACTACCTGGGAATAGACGTGGCCAGGGTCTGGACTCCAGCTTC
CTTTTCCACAGAAAAGCAGAAGCAGTCTACCCAGATACAGTGGCCCTGACCTTTGACCCCATCCACCAGT
GGCTGCTCTGTTTTATAAAGACCACAGCGTCTACATCTGGGATGTCAAGGACATTAATGAAGTCAGCAA
GATATGGTCAGAACTCTCCACAGCTCCTTCGTCTGGAATGTAGAGGTGTACCCGAATTCGAAGACCAG
AGAGCTTGCCTGCCATCCGGGACTTTTCTGACTTGTTCCTCAGACAACACCATCCGCTTCTGGAATATGG
ATAGCGGCTCTGACACTCAATGGCGGAAAAACATCTTCAGCGATTCCCTGCTGAAGGTGGTCTATGTGGA
GAACGACATCCAGCACCTGCAGGACATGTCTCACTTCCAGACCGGGGTAGTGAGAACGGGACGCCCATG
GATATGAAAGCTGGGGTTCGAGTCATGCAGGTCAGTCCTGATGCCAGCACTTGGCTCAGGCGACCCGA



GTGAAATCTGAGGATCCACGAGCTGCACTTCATGGATGAGCTGATCAAGGTGGAGGCCATGATGCTGA
GGTGTGTGCCTGGAGTACTCCAAGCCTGAGACAGGAGTGACTTTGCTGGCTTCAGCCAGTGGGACCGG
CTCATCCATGTGTTAAATGTAGAGAAGAATTACAACCTGGAGCAGACTGGATGACCACTCCTCCTCCA
TCACTGCCATTAAGTTTGTGGCACCAGAGATGTCAGATGATCAGCTGCGGAGCCGACAAGAGCATCTA
CTTTCGCAGCGCCAGCAGACCTCGGATGGGCTGCACTTTGTCCGTACCCACCACGTAGCAGAGAAGACC
ACCTTGTATGACATGGATATTGACATCACACAAAAGTATGTGGCTGTGGCCTGCCAGGACCGCAATGTAA
GGGTCTACAACACAGTGAGCGGGAAACAGAAGAAGTGTACAAGGGCTCTCAGGGTGACGAAGGGTCCCT
GCTGAAGGTCCATGTGGACCCCTCAGGCACCTTCTGGCCACAAGCTGCTCTGACAAAAGCATCTCCGTA
ATTGACTTTTACTCAGGCGAGTGTGTTGCCAAGATGTTTGGCCATTTCAGAAATTGCACTGGCATGAAGT
TCACCTATGACTGCCCACTTGATCACAGTATCCGGAGACAGCTGTGTGTTTCTGTCACCTGGGCCC
CGAGATCACCACTGCATGAAGCAGCACTTGATGGAGATCAACCACCAGGAGCAGCAGCATCTGCCCAAG
GACCAGAAGTGGAGTGGCCCTCCAGCCAGGAGACCTCTGCATCCACCCCAAGTGAAGTCCGTTCCCTGA
GCCCTGGGAGCAGACAGAGGATGAGATGGAGGAGGAGTGTGAACCAGAAGAGACGCTGAAAACACCGTC
CAAAGAGAGCTTGAGCCAGATCCTCGGTGCTGTGACCAATGGCAAGCTGCCACTGTGGGCAAAGCGG
CTGCTAGGGGATGATGATGTGACAGACAGCTCAGCCTTCCAGCCAAGCGCAGCTACCAGCCACATGGCC
GTTGGGCAGAGCGGGCTGAGCAGGAACCCCTCAAGACCATCCTGGATGCCTGGGCCCTGGATTCTACTT
TACACCCATGAAGCCTGGAAATCTTGAAGACTCTGTTCTGGACTCAGTAGAGCCACAAAACCTGGCAGGC
CTGCTAAGTGAGTGTCAACAGAGAATGGACACACGGCCCGGGAGAAGGCCTGGTGAGCTACCTTTGTC
ACTCAGAGTCAGGGAGCCCAAAGAAGCAGCCGAGGACACCCCTCCTACCTGCCTTACAGAGGGAAGG
CACTGAGACAAGAGAACTCATCTCTGCTCCCCAGAGGTGGAAGTGACAGTTACAGGGATGCACAGGGAG
TATTATGAGGAGGCAGAGGCAGGACCTGAGGACCAGCAAGCGGATTCCTATCTCAGGGTCTCCTCCGTC
GTTCAAAGGATCAGAGCCCTCCTGAGGACTCAGGGGAATCAGAGGCTGAACTGGAGTGACGCTTTGCTCA
GCCTCATGTCTCAGCTCCTCGAACGGACCCTGGCCCTCACCTCACCATGACAGGTAAAGCCAGAGCACTCA
AGTACAGACGAGCTTGGCCAGCCTGGGGTGGCGGCTTGGGCAATGGCTCCTTACCCAGACGCGGTGAGC
AGGAGAAGTTCCTCCGCCACATTTTGGAGACTTACTGATGCCCTGCTGAAGAGCTCTTCTCGGATC
ACTGGGAGACATAAAGATCTCAGAGACTGATGACTATTTCTTCAATCCCCGGCTGAGCATCTCCACACAG
TTCCTCTCCCGCTCCAGAAGACCTCCAGGTTCCCTCCCCGGCTGCCCTGCACCTTATGAAGTCTCCAG
AGGTTCCAGCTGTGGGCAAGGGGGCAACCAGCCCAAAGCAGGGCCCTGAGAGCAGGTAAGGCTACAT
GTCCTCAGATGGACCAATGTCTCTGCGCAGATGGCTGAAGAGACTCCAGAGGCTCGTGTCTACCA
ACCCCTCCATCACAGGCTGGCATCCTGTGTCCTCCTCCTCAGTGATACCCACAGACAGGAAGCCTC
CAACCCACGCTGACTGACCACAGGCCGGGAGCAGAGTATCCCGCCCATCTCCGTGTTCTTACCT
GGAGTCCACAACAAGCTCACATGCCAAGATGACTCGCAGCACCTCTCCTGGGACAGTGAGGCCCCGTG
ACAGGCGAGCTACCCAGGCCACTCCACAAGCCGTATCCCCGGCCAGGAACCCAGGCTGTTCCCACTA
CAGTAGCACTCACTTCTAGTGTCAAAGGCCATGAGCCTGCACTGCCTGCTTGGGGCAACCATGAGGCCCG
AGCCAGCTGAGACTGACCTTATCCAGTGTCTGTGAGCAGCTCCTCTCTCCACCGCAACTGGAGCCACCC
ACCACACTGTGTGGTCTCAGGAAGCTGTGGATGTCCACCTAGTATGGCAGTACAGTAGCCAGCTTCT
CAGCACCAGCCCTGAAGACATGAGCACCTGGGACTCCACAGTCTGTGTTTCTTCAAAGACCTCAGC
CTCTGGGCCCCACCCCTCTGCCACCCCAACAGCCTCAACTTCTAGAGACCAGGCTAGGATGCCT
GGCAGCACCCCTGCTCTCCTGGAGCCCACTCCTGATGCATCGAGTGGGAGCCAGACAGCCCTGGACACT
GTGGGGAGCCTGGGCGCCGAGCTGAAGTCCCACCCAGGACCCCTTGGCTAGACAGTGTGGAATCAGT
CTTGATACAGGCTGCAGACTGCCTTCCAAGAAGCCCTTGACCTTTACCGAATGTTGGCCTCCAGCAACCAG
CTGGGTGCGGAGCAGCAGGACAGACTGAGCTGGCCTCCGCCTTCCACTGGATCCACCACCAGCTGG
AAGCCAGCAACTGTGTGGGTGCAGCTAGCGTGGCCCCACCCCTCACACTGCCTAGCCAGGCCCTCCCTC
CCCACCTACACTTTGTCCCCTGGCCAGCCAAACCTGCAGGCCCTGCTGGAACACTACTCGGAGCTGCTA
GTGCAGGCAGTGAGGAGGAAGGTGAGGGGCGAC

ACGCGTACGCGGCCGCTCGAGCAGAACTCATCTCAGAAGAGGATCTGGCAGCAATGATATCCTGGATT
ACAAGGATGACGACGATAAGGTTTAA

Protein Sequence: >RR217654 representing NM_001191623
 Red=Cloning site Green=Tags(s)

MMAALAAGGYARSDTIEKLSVSMAGVPARRNQSSPPPAPPLCLRRRTRLAAAPEDTVQNRVTLEKVLGIT
 AQNSSGLTCDPGTGHVAYLAGCVVVLNPKENKQQHIFNTTRKSLSALAFSPDGKYIVTGENGHRPAVRI
 WDVEEKTQVAEMLGHKYGVACVAFSPNMKHIVSMGYQHDMVLNVWDWKKDIVVASNKVSCRVIALSFSED
 SSYFVTVGNRHVRFWFLEASTEAKVTSTMPLVGRSGILGELHNNIFCGVACGRGRMAGNTFCVSYSGLLC
 QFNEKRVLDKWINKVSLSSCLCVSDELIFCGCTDGIVRIFQAHSLLYLNLPKPHYLGDVAQGLDSSF
 LFHRKAEAVYPDTVALTFDPIHQWLSCVYKDHSVYIWDVKDINEVSKIWSELFHSSVFWNVVEVYPEFEDQ
 RACLPSGTFLTCSNDNTIRFWNMDSGSDTQWRKNIFSDSLLKVVYVENDIQHLQDMSHFPDRGSENGTGM
 DMKAGVRVMQVSPDGQHLASGDRSGNLRHELHFMDL IKVEAHDAEVL CLEYSKPETGVTLLASASRDR
 LIHVLNVEKNYNLEQTLDDHSSSITAIKFAGRDVMISCGADKSIYFRSAQQTSDGLHFVTRTHVAEKT
 TLYDMDIDITQKYVAVACQDRNVRVYNTVSGKQKCYKGSQGDEGSLKLVHVDPSGTFLATSCSDKISISV
 IDFYSGECVAKMFGHSEIVTGMKFTYDCRHLITVSGDSCVFIWHLGPEITTCMKQHLMEINHQEQQHLPK
 DQKWSGPPSQETSASTPSEIRSLSPGEQTEDEMEEECEPEETLKTPSKESLDPDPRCLLTNGKLPWAKR
 LLGDDDDVTSSAFHAKRSYQPHGRWAERAEQEPLKTILDALDYSYFTPMKPGNLEDVLDVPEQNLGAG
 LLSECSPENGHTAPGEGLYSYLCHSESGSPKEDSRGHPSYLPLQREGTETRELI L CSPEVEVTVTGMHRE
 YEEAEAGPEDQQGDSYLRVSSVSSKDQSPPEDSGESEAELECSFAAAHVSA PRTPDGPHTMTGKPEHS
 STDELAQGPVPLGNGSLPQTPEQEKL RHHFETL TDAPAEEL FPGSLGDIKISETDDYFFNPRLSISTQ
 FLSRLQKTSRFPRLPLHLMKSPEVQPVGQGNQPKAGPLRAGTGYMSSDGTNLVSGQMAEETPEASCLP
 TPPITGLASCVPSSVIPTDRKPPTPTSGLTGREQSI PAPS PCSIYLESTTSSHAKMTRSTSLGDSEGPV
 TGELPRPLHKPVSPGQEPQAVPTTVALTSSVKGHEPALPAWGNHEARASLRLTLSSVCEQLLSPQLEPP
 TTPVWSQEAVDVPSPMAVTVASFSAPSPEDMSTLGLHSSVFLPKTSASGPLTPPAHPNLQLLETRSRMP
 GSTPALLEPTPDASSGSPDSPGHGCEPGRRAEVPVPPGLELDSVESVLYRLQTAFAQALDLYRMLASSNQ
 LGAEQQQAQTELASAFHWIHHQLEASNCVGAASVAPPLTLPSPGPPSPPTLCP L ASPNLQALLEHYSSELL
 VQAVRRKVRGD

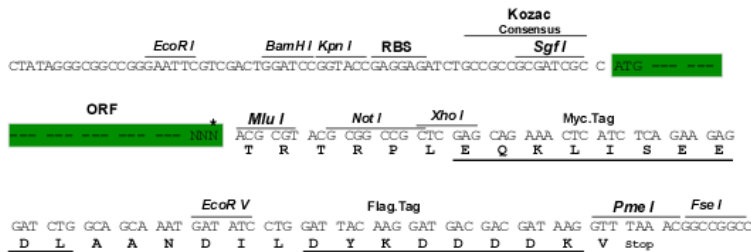
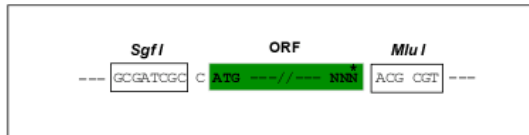
TRTRPLEQKLISEEDLAANDILDYKDDDDKV

Restriction Sites:

SgfI-MluI

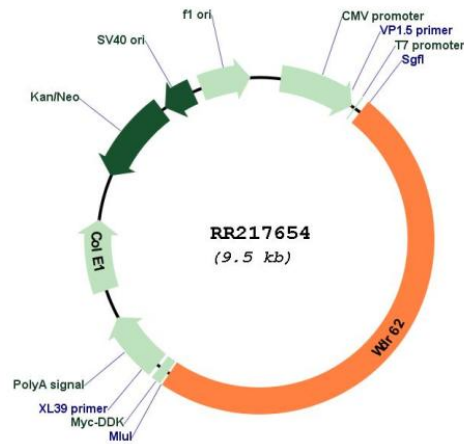
Cloning Scheme:

Cloning sites used for ORF Shuttling:



* The last codon before the Stop codon of the ORF

Plasmid Map:



ACCN: NM_001191623

ORF Size: 4653 bp

OTI Disclaimer: The molecular sequence of this clone aligns with the gene accession number as a point of reference only. However, individual transcript sequences of the same gene can differ through naturally occurring variations (e.g. polymorphisms), each with its own valid existence. This clone is substantially in agreement with the reference, but a complete review of all prevailing variants is recommended prior to use. [More info](#)

OTI Annotation: This clone was engineered to express the complete ORF with an expression tag. Expression varies depending on the nature of the gene.

Components: The ORF clone is ion-exchange column purified and shipped in a 2D barcoded Matrix tube containing 10ug of transfection-ready, dried plasmid DNA (reconstitute with 100 ul of water).

Reconstitution Method:

1. Centrifuge at 5,000xg for 5min.
2. Carefully open the tube and add 100ul of sterile water to dissolve the DNA.
3. Close the tube and incubate for 10 minutes at room temperature.
4. Briefly vortex the tube and then do a quick spin (less than 5000xg) to concentrate the liquid at the bottom.
5. Store the suspended plasmid at -20°C. The DNA is stable for at least one year from date of shipping when stored at -20°C.

RefSeq: NM_001191623.2, NP_001178552.2
RefSeq Size: 4740 bp
RefSeq ORF: 4656 bp
Locus ID: 308492
Cytogenetics: 1q21
MW: 169.5 kDa