

## Product datasheet for **RR217644**

### Iqsec2 (NM\_001277425) Rat Tagged ORF Clone

#### Product data:

**Product Type:** Expression Plasmids  
**Product Name:** Iqsec2 (NM\_001277425) Rat Tagged ORF Clone  
**Tag:** Myc-DDK  
**Symbol:** Iqsec2  
**Synonyms:** RGD1562109  
**Vector:** pCMV6-Entry (PS100001)  
**E. coli Selection:** Kanamycin (25 ug/mL)  
**Cell Selection:** Neomycin  
**ORF Nucleotide Sequence:** >RR217644 representing NM\_001277425  
Red=Cloning site Blue=ORF Green=Tags(s)

TTTTGTAATACGACTCACTATAGGGCGCCGGGAATTCGTCGACTGGATCCGGTACCGAGGAGATCTGCC  
GCCGGATCGCC

ATGGAGGGCGGGTCCGGTCTCCGGTGGCCGGGATCTGAGAGCCCAACCGGGCGGTGGAGTACCTGC  
TGGAGCTGAACAACATCATCGAGAGTCAGCAGCAGCTGTTGGAGACCCAGCGCGCGCATAGAAGAGCT  
GGAGGGCCAGTTGGACCAGCTCACCCAGGAGAACCAGCAGCTGCGGGAGGAGAGCCAGCTGCACCGTGGG  
GAACTGCACCGGGACCCCTTGGCGCGCGGGATAGTCCTGGCCGCGAGAGCCAGTACCAGAACCTGCGTG  
AGACCCAGTTCACCACCGCGAGCTGCGGGAGAGCCAGTTCACCAGGCGTCCCGGGACGTGGGCTACCC  
GAACCGGGATGGCGCTTACCAGAACCAGGAAGCTATCTATCGGGATAAGGAGCGAGAAGCTTCTATCAG  
CTCCAGGACACTACCGTTACACAGCCCGCAGCGCAGCTGGCCAGTGCCACCTGCACCATGAGAACC  
CAGCCCTGGTTCGCGAGCGTGGCGGGAGGGAGGCTGGCCAGCGCACCCGGGCGCGAGAAGGAAGCCGG  
CTATTCGCGCGCGTGGGCGTGGGCGAGCGCCACCGCGGGAGCGGGCCAGTTGAGCCGTGGCGCATCC  
AGAAGCTCCAGCCCTGGCGGGGCGGAGGTCACAGCACCAGTACCAGCACCAGCCCTGCTACAACCTCC  
AGAGAAAATCTGATGGTGAGAATCCAGAACAGTCAGTGTGAGGGTGATGCCCCAGCGAGTACCTGAG  
CACAGCGTTGATAGTCCTGGAGCCAACCCCTACCGGCTGAGCCAAGTCCCCCAACCCAGCAGCCAC  
ATGGGGGGCCCCCTGCTGGCGTGGGCCTACCTGGTCTCAGAGGGCTCGCCTCCAGCCAGCCAGTGTCCG  
CCCTGAGGAAGCAGGAGGAGGAGGAGATAAAGCGCTCCAAGGCCCTGTCAGACAGCTATGAACTCTCCAC  
AGACCTACAGGACAAGAAGGTGGAAATGCTGGAGAGGAAGTATGGGGGCTCCTTCTGAGCCGAGGGCT  
GCCAGGACCATCCAGACAGCCTTCGCCAGTATCGTATGAATAAGAACTTTGAGCGACTGCGCAGCTCGG  
CTTCAGAGAGCCGATGTCCCGCCGATCATCTTGTCCAACATGCGGATGCAGTTCTCCTTTGAGGAGTA  
CGAAGAACACAGAACCCTGCATACTTCGAAGGCAAGCCTGCCTCATTGGATGAGGGTCAATGGCTGGA  
GCCCGGAGCCACCGGCTTGAACGGGGCTCCCTATGGAGGCTCCTGTGGTGGGGCATCGATGGTGGTG  
GAAGTTCAGTCACACATCTGGAGATTTTCTAATGACATCACAGAGCTCGAGGACTCCTTCTCCAAACA  
GGTAAAGTCTCTGGCTGAATCCATTGATGAGGCCTTGAAGTCCACCCATCAGGGCTATGTCTGAGGAG  
CCAGGGTCAGCCCAACTGGAGAAGCGGGAATCAAAGGAACAGCAAGAAGACAGCTCAGCCACATCCTTCA



[View online >](#)

GTGACCTCCCCCTCTACTTGATGACCCAGTTCCTCCTCCATCACCTGAGCGACTGCCAGCACAGAGCC  
CCCACCCCAAGGCCGCCCTGAGTTCTGGGCACCAGCTCCCCTCCCACCAGTTCCTCCACCAATGCCACCA  
GGGACCCGGGAAGATGGTAGCCGTGAGGAAGGCACTCGAAGGGTCTGGGTGCTTGAGTGGCCGGGATT  
TCCGGCTCCGGCTGCACACCTCCCCCTCCTCACCATTGAGCCTCCCAGTGACAGTTCTGTAGACCTGAG  
TGACCGCTCAGATCGCGGCTCTGTCCACCGCCAGCTGGTGTATGAGGCTGATGGCTGCAGCCCCATGGG  
ACCCTGAAGCACAAAGGGCCACCAGGCAGGGCCCAATCCCACACCGCCACTACCCTGCCCTGAGGGTC  
CAGCTCCAGCCCCACCAGGGCCCTGCCACCAGCCCCCAATAGTGGTACTGGGCCAGTGGTGTGGCTGG  
AGGTCCGAGGTTGGGAAAGTGTGAGGCAGCAGGTGAGAACTCTGATGGTGGAGACAATGAGAGCCTTGAG  
AGCTCCAGCAACTCTAATGAGACCATCAACTGCAGCTCTGGCTCCTCCTCTCGGGATAGCCTGAGGGAAC  
CTCCAGCCACTGGCCTGTGCAAGCAGACTTACCAGCGGGAGACAAGGCACAGCTGGGACTCGCCAGCCTT  
CAACAATGACGTGGTACAAAGAAGGCATTACAGAATTGGCCTCAACCTCTTCAATAAGAAGCCAGAGAAG  
GGTATCCAGTATTTGATCGAGCGAGGCTTCTGTGACAGACTCCTGTGGGGTGGCTCACTTCATCCTGG  
AGCGGAAAGGCCGTGATCGGCAGATGATAGGGGAATCCTGGGAATCGACAGAAGCAGTTCAACAGAGA  
TGTGTTGACTGTGTGGTGGATGAGATGGACTTCTCCTATGGATTTGGACGATGCACTCAGGAAGTTC  
CAATCCCATATCCGAGTTCAGGGTGAAGCCAGAAAGTGGAGCGACTCATTGAAGCTTTCAGCCAGCGGT  
ACTGTGTCTGTAACCCTGCCCTCGTACGACAGTTCGGAAACCCAGACACTATCTTCATCCTTGTCTTTGC  
CATCATCCTCCTCAATACCGATATGTACAGCCCCAGTGTCAAGGCTGAACGCAAGATGAAGCTGGATGAC  
TTCATTAAGAACCTGAGAGGAGTTGACAATGGTGAAGACATCCCCGAGACCTCCTAGTAGGCATCTACC  
AGCGCATCCAAGTCTGTAAGTAAAGGACCAACGATGACCATGTGTCCCAGGTGCAGGCTGTGGAGCGCAT  
GATTGTTGGCAAGAAACCGGTCCTGTGCTCCCTCACCCTCGACTGGTTTGTGCTGCCAGCTCTATGAG  
GTGCCAGATCAAATCGCCCCAAAGGCTGGGGTGCATCAGCGGGAGGTCTTCTCTTCAATGACCTCC  
TTGTGGTACCAAAAATTTCCAGAAGAAGAAGATCTTGGTACATACAGCTTCCGTGAGTCTTTCCCT  
CCTGGAGGGGAACGAAAAGTTCTCATTATCTTTAATGCTCCTAGCCTCCAAGACAGGCTACGCTTTACCT  
CTGACCTGCGGGAGTCCATTGCTGAGGTGCAGGAGATGGAGAAGTACCGTGTGGAATCGGAGCTGGAGAA  
GCAGAAAGGTATGATGCGGCCTAATGCCTCACACCTGGAGGAGCCAAGGACTCAGTGAATGGGACTCTG  
GCCCGCAGTAGTCTGGAGGACACTTATGGGGCAGGCGATGGGCTCAAGCGGGGTGCACTCAGTAGTTCC  
TGCGAGACCTCTCTGATGCAGGGAAGCGGGGGCGGCGTAACAGCGTGGGATCGTGGACAGCACCATCGA  
AGGGTCTGTTATTAGCAGTCCACGCCCTCACCAGAGGATGCCACCTCCGCCCCCACCCTCCGCCAGAG  
GAGTACAAGAGCCAGAGGCCAGTCTCCTCACTCCTCATCTTCTGGGCTCCCTATTTGGAAGCAAGAGAG  
GCAAAGGGCCCTCCAGATGCCACCACCCCAACAGGCCAGGCCCTGCTGCTCTCATCTGCTTCTCCTC  
CACCACCCACCACCATCACCACCACCACCATGGTCAAGCCATGGTGGCCTGGGGGTGCTACCTGATGGG  
CAGTCCAAGCTCCAGGCCCTGCATGCCAGTATTGCCAAGGACCGGGCCCTGCCCCACCACCTCTACAA  
CCCCCAGCAACCCCTCTGCTCCACCCCTCAGCAGCCTCCACCCCTGCCCCAGCTGGGCTCCATTCC  
ACCACCACCTGCCTCAGCCCCACCTGTGGGGCCACATCGACACTTCCATGCCCATGGCCAGTTCAGGA  
CCCCAGCATTACCTTGGGCGGGCCAGGAGAGCCCCAAGACGAGGGGCTGGAGGACACCCTCAGTTTG  
CTCCACATGGCCGCCACCCTTGCAACAGCCACATCCCCGTTACCCCTGTACAGTCTGCTCCACAGCA  
CCCTCTGCCATAAACAGGGCCCCAAGCACTTCACTTTCAGTCAACCCACAGATGATGCCAGCAGCA  
GGTGCAGCTGGGGCCCTGGGTCCGGCCACCAGGGGATCCTACTCCACCCCTCACCACCCCAATCAC  
CACTGTCCCCACACTCACCCATCCACCTCACCCCTCTACCCGCCCCGCCCCACCCTCACCTCACAC  
TCCACATTCACCCTACCACCACCTCCCCCATGGCCACTGCACGCTCTGGGCCCTGGCACGGCT  
AATCCACCAGTGCAAACCCCAAGGCCAAGCCGGATCAGCACTGTGGT

ACGGTACGCGGGCGCTCGAGCAGAACTCATCTCAGAAGAGGATCTGGCAGCAATGATATCCTGGATT  
ACAAGGATGACGACGATAAGGTTTAA

Protein Sequence:

>RR217644 representing NM\_001277425  
 Red=Cloning site Green=Tags(s)

```
MEAGSGPPGGPGSESPNRAVEYLLELNIIIESQQQLLETQRRRIEELQGLDQLTQENRDLREESQLHRG
ELHRDPLGARDSPGRESQYQNLRETQFHRELRESQFHQASRDVGYPNRDGAYQNREAIYRDKEREASYQ
LQDITTYTARERDVAQCHLHHENPALGRERGGREAGPAHPGREKEAGYSAAVGVGQRPPrERGLSRGAS
RSSSPGAGGGHSTSTSTSPATTLQRKSDGENSRTVSVEGDAPGSDLSTAVDSPGSQPPYRLSQLPPTSSH
MGGPPAGVGLPWSQRARLQPASVALRKQEEEEIKRSKALSDSYELSTDLQDKKVEMLERKYGGSFLSRAA
ARTIQTAFRQYRMNKNFERLRSSASESRMSRRIILSNMRMQFSFEEYEKAQNPAFYEGKPAASLDEGAMAG
ARSHRLERGLPYGGSCGGIDGGSSVTTSGEFSNDITELEDSFSKQVKSLAESIDEALNCHPSGPMSEE
PGSAQLEKRESKEQEDSSATSFSDLPLYLDDVPPPSPERLPSTEPQGRPEFWAPAPLPPVPPMPPP
GTREDGSREEGTRRPGCLECRDFRLAAHLPLLTIEPPSDSSVDLSDRSRGSVHRQLVYEADGCSPHG
TLKHKGPPGRAPIPHRHYPAGEPAPAPPGLPPAPNSGTGPSVAGGRRLLKCEAAGENSDDGDNESLE
SSNSNETINCSSGSSSRDSLREPPATGLCKQTYQRETRHSWDSAPFNNDVVQRRHYRIGLNLFNKKPEK
GIQYLIERGFLSDTPVGVAFHILERKGLSRQMIGEFLGNRQKQFNVDLDCVVDEMDSSMDLDDALRKF
QSHIRVQGEAQVERLIEAFSQRVCVCPALVRQFRNPDTIFILAFAILLNTDMYSPSVKAERKMKLDD
FIKNLRGVDNGEDIPRDLVGIYQRIQGRELRTNDDHVSQVQAVERMIVGKPKVLSLPHRRLVCCQLYE
VPDPNRPQRLGLHQREVFLFNDLLVVTKIFQKKILVTYSFRQSFPLVEMHMLQFQNSYYQFGIKLLSAV
PGGERKVLIIIFNAPSLQDRLRFTSDLRESIAEVQEMEKYRVESELEKQKGMMPNASQPGGAKDSVNGTL
ARSSLEDTYGAGDGLKRGALSSSLRDLSDAGKRGRNRNSVGLSDSTIEGSVSISSPRPHQRMPPPPPPPE
EYKSRPVSNSSSFLGSLFGSKRKGPFQMPPPPTGQASSSSSASSTHHHHHHHHHGHSHGGLVLPDG
QSKLQALHAQYCQGPAPPSTTPQQPPLPPPQPPPLPQLGSIPPPASAPPVGPHRHFHAHGVPVG
PQHYTLGRPGRAPRRGAGGHPQFAPHGRHPLHQPTSPLPLYSPAPQHPAHKQGPKHFISSHHPQMPAA
GAAGGSGSRPPGGSYSHPHHPQSPLSPHSPIPPHSYPLPPSPHTPHSPLPPTSPHGPLHASGPPGTA
NPPSANPKAKPSRISTVV
```

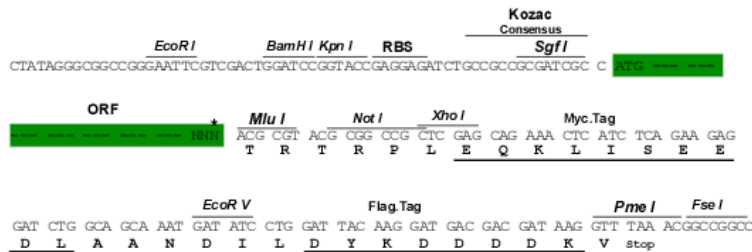
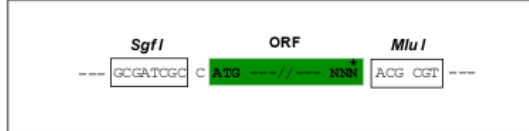
TRTRPLEQKLISEEDLAANDILDYKDDDDKV

Restriction Sites:

SgfI-MluI

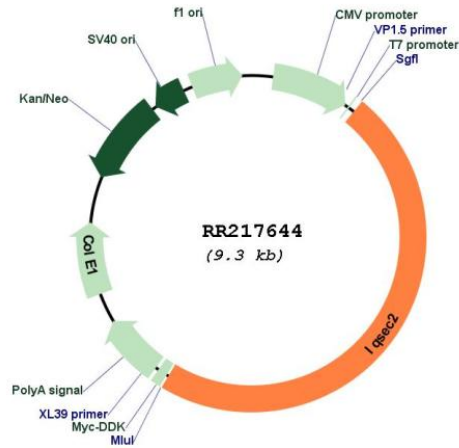
Cloning Scheme:

Cloning sites used for ORF Shuttling:



\* The last codon before the Stop codon of the ORF

Plasmid Map:



ACCN: NM\_001277425

ORF Size: 4464 bp

OTI Disclaimer: The molecular sequence of this clone aligns with the gene accession number as a point of reference only. However, individual transcript sequences of the same gene can differ through naturally occurring variations (e.g. polymorphisms), each with its own valid existence. This clone is substantially in agreement with the reference, but a complete review of all prevailing variants is recommended prior to use. [More info](#)

OTI Annotation: This clone was engineered to express the complete ORF with an expression tag. Expression varies depending on the nature of the gene.

Components: The ORF clone is ion-exchange column purified and shipped in a 2D barcoded Matrix tube containing 10ug of transfection-ready, dried plasmid DNA (reconstitute with 100 ul of water).

**Reconstitution Method:**

1. Centrifuge at 5,000xg for 5min.
2. Carefully open the tube and add 100ul of sterile water to dissolve the DNA.
3. Close the tube and incubate for 10 minutes at room temperature.
4. Briefly vortex the tube and then do a quick spin (less than 5000xg) to concentrate the liquid at the bottom.
5. Store the suspended plasmid at -20°C. The DNA is stable for at least one year from date of shipping when stored at -20°C.

**RefSeq:** [NM\\_001277425.1](#), [NP\\_001264354.1](#)

**RefSeq Size:** 5362 bp

**RefSeq ORF:** 4467 bp

**Locus ID:** 685244

**Cytogenetics:** Xq13

**MW:** 162.8 kDa