

## Product datasheet for RR217640

### Cpamd8 (NM\_001271376) Rat Tagged ORF Clone

#### Product data:

Product Type:	Expression Plasmids
Product Name:	Cpamd8 (NM_001271376) Rat Tagged ORF Clone
Tag:	Myc-DDK
Symbol:	Cpamd8
Synonyms:	RGD1566313
Vector:	pCMV6-Entry (PS100001)
E. coli Selection:	Kanamycin (25 ug/mL)
Cell Selection:	Neomycin
ORF Nucleotide Sequence:	>RR217640 representing NM_001271376 Red=Cloning site Blue=ORF Green=Tags(s)

TTTTGTAATACGACTCACTATAGGGCGCCGGAATTCGTCGACTGGATCCGGTACCGAGGAGATCTGCC  
GCC**CGGATCGCC**

ATGTGGAAGAACAGAGAGGCTCACCTGTGCCTTTTTTCAGTTCTTCTGCCCTCCTGCCTTCTGCTTCT  
CGTTCAATGGAACTCGAAGTATATGGTCTGGTCCCCTCCAGCTCTACACCGACACCCTGAGAAAAT  
CTGCCTGCATCTATACCATCTGAATGAGACAGTACTGTGACAGCTTCTTGATATCTCAAAGGGGAACG  
AGAAAAGTGTTCGATGAGCTTGTGGTTGACAAGGACTTGTCCACTGTCTTCTTCACTATCCCTAGAT  
TGCCCTCTTCTGAAGAGGAGGAGTCACTCGACATCAACATAGAAGGGGCAAGCATAAAATTCAGCAAAAAG  
GCGTGTGGTGTGTGAAGAACAAGAAAGTGTGTCTTGTCCAGACTGATAAGCCCGTGTACAAGCCA  
GGACAGTCAGTTAAATTCGGATTGTCTCTATGGATAAAAATCTACACCCCTGAATGAGTTGTTTCTC  
TGGCTTACATTGAGGATCCAAAATCAACCGAATTATGCAGTGGCAGGACATTAAGACAGAGAATGGGCT  
TAAGCAATTGCCTTCAGCCTGTCAGCAGAGCCCATTCAGGGCCCTACAAGATAGTCATTCTCAAACAG  
TCAGGAGTGAAGGAAGAGCATTCTTCCAGTCAAGTGAATTCGTGCTTCCAGATTTGGTGTGATGTGA  
AGGTCCCAAACGCCATCTCTGTGTATGATGAGATAATCAGTGTGACTGCCTGTGCGACATATACCTATGG  
GAAACCTGTCCCGGACGTGTAAGATAAGTCTTGGCATGGAAATCCTTCTTTAGATCTCAGACAAAAG  
TCTGCATGCAAAGAAGAGGACTCGGAGCTAGACAACAACGGCTGCAGCACACAAGAAGTGAACATCACTG  
AGTTCCGATTGAAGGAAAATTACCTCAAAGTGCGCCAGGCTTTCATGTGAATGCAACTGTTACAGAAGA  
AGGGACAGGGTCAGAGTTCAGTGGATCTGGAAGAATTGAAGTCAAAGAACCAGAAAACAAATTCCTATTT  
CTGAAAGCAGATTCCTTCCAGATGGGATCCATTCTTGTGAAGGTCGGCTAGTGAATATCAAGG  
GAGATCTATCCCAAATCAGCAGGTCTTCAACAGCACAAGGAGCTGGCTTACCAATGCTACTACCAC  
TGATCAGCATGGCTTGGCAAGTCTCCATAGATACCAGCGCATCTCACGATATATCCTGAATATCAA  
GTCTACCACAAGGAGGAAAATTCATGCATCCATTCCTTGTGCACAGCAGAGACACGCAGAGGCACATC  
ATACGGCTATGCTGTTTACTCCCTCAGCAAGAGCTACATCTACCTTGACACAGAAGCTGGCGTCTTGCC  
CTGCAACCAGAGCCACACAGTTCAGGCACATTTATTCTGAAGGGCAGGCTTGGGAGTGTGCCACAG  
ATTGTTTTCCACTACCTGGTCATGGCCAGGGCAGCATCTCCAGACTGGAAACCACTCATCAAGTGG



[View online >](#)

AGCCAGGAGAATCTCCAGTACAAGGCAACTTCGCCTTGGAGATCCCTGTGGAGTTGAGTATGTTCCCAT  
GGCTAAAATGCTCATCTACACCATCTTGCCCTGATGGAGAAGTATTGCAGATTCTGTAAAGTTTCAAGTT  
GAAAAATGTCTTCGTCATGAAGTGCACCTGAGTTTCAGCCATCCCAAAGTCTTCCAGCCTCACAAACCC  
ATATGCGGGTTACAGCTTCTCCTCAGTCCCTCTGTGGCCTGAGAGCTGTGGACCAAGCGTGTCTGTCT  
GAAGCCTGAGGCTGAGCTCTCCCCTTCTTGATATGATCTACCAGGTATGCAAGAGAGCAAGTTCATT  
CCACGTTCCCACATCCATTTGAAGACGAAGATGGTTGTGTATATACCGACCAAGAGTTCATTGGAAAGC  
TCACATACTCAGTACCATATGGACGAGAGAAGGATGCTTCAGATACATGAGGGACACGGGTTTAAACGGC  
ACTCACCAACTTGAAACTTCGTACATTTTGTGTTTGAATGACTATGACATGGTTCCATTAGCAGTACCTGTGCC  
CGATCTAGTGATTTATTTAACAGCGACGGTTATGGAAAGTTGGCGCTCAGCAAGAGTAAAAAGTCTACCTC  
CTAAAAAGGCACCACATAAAGATCCACCACCTAAAGATCCAGTTATTGAGACCATTAGGAATTATTTTCC  
TGAAACCTGGGTCTGGGATTTAGTCACAGTAAACTCCTCAGGAGCAGCTGAATTGGAAAATGACAGTCCCT  
GACACCATCACTGAATGGAAGGCCGGAGCCCTCTGCCTGTCCAATGACACTGGTCTTGGCCTCTCTTCTG  
TGGCAACTCTCCAAGCCTTCCAACCTTTCTTTGTGGAGCTCACAATGCCCTACTCTGTGATCCGTGGAGA  
AGCCTTACAGCTCAAGGCCACTGTGATGAACTACCTCCCTACAAGCTTGGCGATGCCAGTGCAGCTGGAA  
GCTTCTCCTGATTTACAGCTGTCCAGTGGGAAACGACCAAGATTCTTACTGCCTTGGTCCAATGGAA  
GGCACACCTCATCTGGTTGGTAACTCCCAAATCTTTAGGGAATGTGAATTTCTCTGTGTCTGCGGAAGC  
ACAACAGTCCCCAGAGCCTTGTGGTTCTGAGGTGGCCACAGTGCCTGAAACCGGGAGAAAGGACACAGTC  
GTCAAAGTCTTGATAGTTGAGCCTGAAGGAATCAAGAGAGAGCATACTTTAGCTCACTGCTGTGAT  
CAGATGCTGAGCTATCAGAAACATTGTCTCTGTGCTTCCACCAACAGTGTGAAAGATTGAGCCAGAGC  
ACATTTCTCTGTGATGGGTGATATCTTGAGTTCAGCCATAAAAAACACACAAAATCTTATCCAAATGCC  
TATGGCTGTGGGAGCAGAACAATGGTCTTTTGTCTCCGAGCATCTATGTAAGTAAATCTGAATGAAA  
CCCAACAGCTGACAGAGAAGATCAAGTCCAAGGCCCTTGGCTACCTCAGAGCTGGTTATCAGAGGGAAC  
GAACTACAAACACAAGGATGGTCTCCTACAGTGCCTTTGGGATCAGATGGCAAGGTCAAGGAAACACT  
TGGCTCACAGCCTTTGTGCTCAAGTCTTTTCCCAAGCTCAAGCCTTCTCTTCTTATTGACGAATCACACA  
TCAACGATGCCTTACCTGGCTCTCCATCAGCAGAAGGACAGTGGCTGCTTCCAGGAGCTCTGGATCACT  
GTTCAACAACGCCATGAAGGGGGAGTTGATGATGAAATCACCTCTCTGCCTATATAACTGTGGCCCTT  
TTGGAAAGTTTACCCCCAGACACTCATCTGTTGTCTCCAAGCCCTGAGCTGCCATAGAGTCATCTTGGG  
AGAACATAGAGCAAGGAGGAAATGGCAGCTTCGTGTACACCAAGGCACTGATGGCCTATGCTTTTGTCT  
GGCGGGGAATCAGGAGAAGAGAAACGAAATCCTGAAATCCCTTGATAAGGAAGCTATAAAGGAAGACAAC  
TCCATTCAGTGGGAAAGACCTCAGAAACCCATGAAATCAGCGCTTCTCTGTACAAACCCCAAGCTTCT  
CTGCTGAAGTAGAGATGAATGCCTATGTATCTTAGCTCGCTCACTGCCAGTCAAGCCCATCCCTAA  
GGACCTGGCTTTGTCAATGGGCACCATCAAGTGGCTCACAAAGCAGCAGAATCCCGTGGTGGCTTCTCC  
TCCACACAGGACACTGTGGTGGCCCTCGATGCTCTGTCCAATACGGAGCAGCTACTTTTTCCAAAAGCC  
AAAAAATCCTTCGGTGACCGTCCAATCTTCAAGGTCATTTTTCCAAAAGTTCCAAGTGGACAACAGTAA  
TCGTCTGTACTGCAGCAGGTCTCATTACCAGACATTCTGGGAACTACACCGTCAGTGTGTGAGGAGAA  
GGATGTGTGATGCTCAGACCATGTGTGAGATAACCTGCCCTTGGAGAAGCAGCAGCCTGCGTTTGTCT  
TAAAGGTGACAGCAGTACCCCTGACTTGTAAACACCCCAAGGCCAGAACAGCTTCCAAATCTACTAGA  
AATCAGTTACACGGGGAGCCGTCCAGCCTCCAACATGGTATTGCTGATGTGAAGATGCTCTGGTTTC  
ATCCCATTGAAACCAACAGTGAAGAAGCTTGAAGATTAGAGCATGTAAGCAGAACAGAAGTACCACCA  
ACAACGTCTGTTATATTTGGACCAGTAACCAATCAGACACTGCCTTCTCCTTCAATTCATTCAACAAGA  
CATCCCAGTAAAGAACCTGCAGCCTGCCATTGTGAAAGTGTATGACTACTATGAGACAGATGAAGTGGCT  
TTTGTGAATACAGCAGCCCTGCAGCTCAGACAACCAAATGTT

ACGCGTACGCGGCCGCTCGAGCAGAACTCATCTCAGAAGAGGATCTGGCAGCAATGATATCCTGGATT  
ACAAGGATGACGACGATAAGGTTTAA

**Protein Sequence:** >RR217640 representing NM\_001271376  
 Red=Cloning site Green=Tags(s)

```

MWKNREAHLCLFSVLLALLPSASSFNGNSKYMVLVPSQLYDTPKEICLHLYHLNETVTVTASLISQRGT
RKLFDLVDKDLFHCLSF TIPRLPSSEEEESLDINIEGAKHKF SKRRVVLVKNKESVVFVQTDKPVYKP
GQSVKFRIVSMDKNLHPLNELFLAYIEDPKINRIMQWQDIKTENGLKQLSFLSAEPIQGPKYKIVLTKQ
SGVKEEHSFTVMEFVLPFRFGVDVKVPNAISVYDEIISVTACATYTYGKVPGRVKISLCHGNPSFRSQT
SACKEEDSELNNGCSTQEVNITEFRLKENYLKVRQAFHVNATVTEEGTGESESGSGRIEVKTRNKFLF
LKADSHFRHGIPFFVKVRLVNIKGDPINQQVFIKAQGAGFTNATTTDQHGLAKFSIDTSGISRYILNIK
VYHKEENSCIHSSCTAERHAEAHHTAYAVYSLSKSYIYLDTEAGVLPNCQSHTVQAHLKKGQVLGVLQP
IVFHLYVMAQGSILQTGNHTHQVEPGESPVQGNFALEIPVEFSMVPMAKMLIYITILPDGEVIADSVKQV
EKCLRHEVHLSFSPSQSLPASQTHMRVTASPQSLCGLRAVDQSVLLKPEAELSPSLIYDLPGMQESKFI
PRSHYPFEDEDCVIYRPRVIGKLTYSVPYGREKDVFRYMRDTGLTALTNLKLRTFCFDYDMVPLAVPAA
RSSDLFNSDGYGWSRARSVKSLPPKKAPHKDPKDPVIEIRNYFPETWVWDLVTVNSSGAAELEMTPV
DTITTEWKAGALCLSNDTGLGLSSVATLQAFQPFVVELTMPYSVIRGEAF TLKATVMNYLPTSLPMAVQLE
ASPDFTA V PVGNDQDSYCLGANGRHTSSWLVT PKSLGNVNF SVSAEAQQSPEPCGSEVATVPETGRKDTV
VKVLIVEPEGIKREHTFSSLLCASDAELSETL SLLL PPTVVKDSARAHFSVMGDI LSSAIKNTQNLIQMP
YGCGEQNMVLFAPSIYVLKYLNETQQLTEKIKSKALGYLRAGYQRELNKHKDGSYSAFGDHDGKGQNT
WLTAFVLKSFSAQAFIFIDESHITDAFTWLSHQKQDSCFRSSGSLFNNAMKGGVDDEITLSAYITVAL
LESLPPDTHPVVSKALSCLESSWENIEQGGNGSFVYTKALMAYAFALAGNQEKRNEILKSLDKEAIKEDN
SIHWERPQKPMKSARSLYKPQASAEVEMNAYVILARLTAQSAPSPKDLALSMGTIKWLTKQNSRGGFS
STQD TVVALDALSKYGAATFSKSQKTPSVTVQSSGFFQK FQVDNSNRLLLQQVSLPDIPGNVTVSVSGE
GCVYAQTMLRYNLPLEKQPAFALKVQTVPLTCNNPKGQNSFQISLEISYTGSRPASNMV IADV KMLSGF
IPLKPTVKKLERLEHVSRTVETNNVLLYLDQVTNQTLSFSFIIQQDIPVKNLQPAIVKVVYDYETDEVA
FAEYSSPCSSDNQNV
    
```

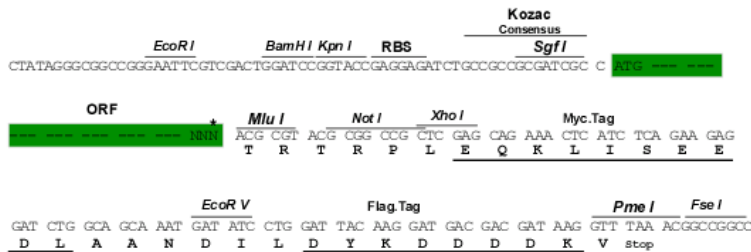
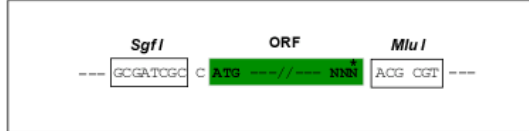
TRTRPLEQKLISEEDLAANDILDYKDDDDKV

**Restriction Sites:**

SgfI-MluI

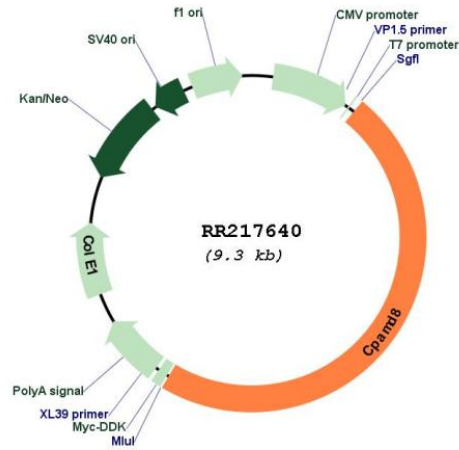
**Cloning Scheme:**

Cloning sites used for ORF Shuttling:



\* The last codon before the Stop codon of the ORF

Plasmid Map:



ACCN: NM\_001271376

ORF Size: 4455 bp

OTI Disclaimer: The molecular sequence of this clone aligns with the gene accession number as a point of reference only. However, individual transcript sequences of the same gene can differ through naturally occurring variations (e.g. polymorphisms), each with its own valid existence. This clone is substantially in agreement with the reference, but a complete review of all prevailing variants is recommended prior to use. [More info](#)

OTI Annotation: This clone was engineered to express the complete ORF with an expression tag. Expression varies depending on the nature of the gene.

Components: The ORF clone is ion-exchange column purified and shipped in a 2D barcoded Matrix tube containing 10ug of transfection-ready, dried plasmid DNA (reconstitute with 100 ul of water).

**Reconstitution Method:**

1. Centrifuge at 5,000xg for 5min.
2. Carefully open the tube and add 100ul of sterile water to dissolve the DNA.
3. Close the tube and incubate for 10 minutes at room temperature.
4. Briefly vortex the tube and then do a quick spin (less than 5000xg) to concentrate the liquid at the bottom.
5. Store the suspended plasmid at -20°C. The DNA is stable for at least one year from date of shipping when stored at -20°C.

**RefSeq:** [NM\\_001271376.1](#), [NP\\_001258305.1](#)

**RefSeq Size:** 4586 bp

**RefSeq ORF:** 4458 bp

**Locus ID:** 297572

**Cytogenetics:** 4q42

**MW:** 164.9 kDa