

## Product datasheet for **RR217637**

### Pxdn (NM\_001271261) Rat Tagged ORF Clone

#### Product data:

Product Type:	Expression Plasmids
Product Name:	Pxdn (NM_001271261) Rat Tagged ORF Clone
Tag:	Myc-DDK
Symbol:	Pxdn
Synonyms:	Perc64; Vpo1
Vector:	pCMV6-Entry (PS100001)
E. coli Selection:	Kanamycin (25 ug/mL)
Cell Selection:	Neomycin
ORF Nucleotide Sequence:	>RR217637 representing NM_001271261 Red=Cloning site Blue=ORF Green=Tags(s)

TTTTGTAATACGACTCACTATAGGGCGCCGGGAATTCGTCGACTGGATCCGGTACCGAGGAGATCTGCC  
GCC**GCGATCGCC**

ATGGCCGTGCGCCCCACGCGCCGCTGCCTGCTGGCACTCGTGCTGTGCTTCGCTGGTGGCCATGGCGG  
TGGTGCCTCGAAGCAAGGGCAGGCTGTCCAAGCCGCTGCCTGTGCTTTCGTACCACCGTGCCTGCAT  
GCATCTGTTGTTGGAGGCGGTGCCGCGGTGGCCGCGAGACCTCCATCCTAGATCTTCGGTTCAACAGA  
ATCAGAGAGATCCAACCCGGGGCATTACAGAGGCTGAGGAACTTGAACACACTGCTTCTTAAACAACCC  
AGATCAAGAAGATTTCCAGTGGTGCCTTTGAGGACCTGGAGAACTTAAAAACCTCTATTTGTACAAGAA  
TGAGATCCAGTCAATTGACAGGCAAGCATTTAAGGGACTTGCCTCTCTAGAGCAACTGTACCTGCCTTT  
AATCAGATAGAGACGCTGGACCCAGAATCCTTCCAGCACCTGCCGAAGCTGGAGAGACTGTTTTTACATA  
ATAATCGCATCACACACTTAGTTCCTGGGACGTTCACTCAGTTGGAGTCCATGAAACGGCTGCGATTAGA  
CTCAAAATGCACCTCACTGTGACTGTGAAATATTATGGCTAGCGGATCTGCTGAAGACCTATGCCAACT  
GGAAATGCACAAGCAGCAGCCACCTGCGAGTATCCAGACGCATCCAAGGACGCTCTGGCTACCATCA  
CCCCAGAAGAGCTGAACGTGAAAGACCCCGGATCACCTCAGAGCCACAGGATGCAGATGCACCTCAGG  
GAACACAGTGTACTTCACTGCAGAGCTGAGGGCAACCCCAACCTGAGATCATCTGGCTTCGAAACAAT  
AACGAGCTGAGCATGAAGACAGATTCTCGCTTAAACTTGTGGATGACGGCACACTGATGATCCAGAACA  
CACAGGAGGCCGACGAGGGTGTCTACCAGTGCATGGCAAAAAACGTGGCTGGAGAGGCGAAAAACGCATGA  
GGTGACCTCAGTACTTGGGATCCCCAGCCGACCCACTTTTGTAAATCCAGCCGAGAACAACAGAGGTA  
CTGGTGGGTGAGAGTGTCACTCTGGAGTGCAGTGCCACAGGTCACCTCTGCCTCAGATCACGTGGACTC  
GAGGTGACCGGACACCCTTGCCGATTGACCTCGAGTGAATATCACTCCCTCTGGAGGACTGTATATACA  
GAACGTGCCCCAGAGCGATAGTGGCGAGTACACGTGCTTTCATCCAACAGCGTGGACAGCATCCATGCC  
ACGGCCTTCATCATTGTACAGGCCCTTCTCAGTTCAGTGAACCCCTCAGAGCCGAGTGGTCATTGAAG  
GACAGACTGTGGACTTCCAGTGTGAGGCTAAGGGCTACCCTCAGCCAGTCAATCGCCTGGACCAAGGGAGG  
GAGCCAGCTCTCAGTGGACAGGCGGCACCTGGTGTGCTCCTCAGGAACACTCAGGATTTCTGGGGTGGCC  
CTGCATGACCAGGGCCAGTATGAGTGCCAGGCCGTCACATCATTGGCTCCCAGAAGGTGGTGGCCACC



[View online >](#)

TGACTGTACAGCCAGAGTCACCCAGTATTTGCCAGCATTCCCAGTGACATGACTGTAGAGGTGGGCAC  
CAACGTGCAGCTGCCTTGTAGCTCCCAGGGGAACCAGAGCCAGCCATCACCTGGAACAAGGATGGTGT  
CAGGTAACAGAAAAGTGGAAAATTTACATCAGCCCGGAAGGATTCTTGACCATCAATGATGTTGGCACTG  
CTGATGCAGGTCGCTATGAGTGTGTAGCTCGGAACACAATTGGATATGCCTCTGTGAGCATGGTACTCAG  
CGTGAACGTTCTGATGTAAGTCGAAATGGGGATCCATACGTTGTACCTCTATTGTTGAAGCCATTGCA  
ACTGTTGACAGAGCCATCAACTCTACAAGGACACACTTGTGTTGACAGCCGACCTCGTTCTCCAAATGACC  
TACTTGTCTGTTCGGTACCCACGGGATCCGTACACCGTGGGACAAGCCAGGGCAGGAGAGATATTCGA  
GCGGACCCTGCAGCTGATCCAGGAACATGTTACGATGGCTTGATGGTGGACTTGAATGGAACAAGTTAC  
CACTACAATGATCTGGTGTCCCCGAGTACCTGAGCCTCATCGCCAACCTGTCAGGCTGCACTGCACACC  
GTCGTGTGAACAAGTCTCAGACATGTGCTTCCACCAGAAGTATAGGACGCACGATGGCAGTGCACAA  
TCTGCAGCACCAGTGTGGGGAGCCTCACTGACCGCTTCGAGCGCTGCTGAAGGCTGTGTATGAGAAT  
GGATTCAACACGCCCCGTGGCATTAAATCCAGCGTCAGTACAATGGGCATGACTACCCATGCCCGCC  
TGGTGTCCACCACACTGATCGGGACAGAGGTGATCACCCAGATGAGCAGTTTACACACATGCTGATGCA  
ATGGGGCCAGTTCCTTGACCATGACCTAGACTCTACAGTGGTGGCCCTGAGCCAGGCCGCTTCTCTGAT  
GGGCGCATTGCAGCTCAGTGTGACGAATGACCTCCCTGTTTCTCGGTATGATCCCCCAACGATC  
CCAGAGTGCAGGAGTGGGGCCGATGCATGTTCTTCGTGCGGTCAAGCCCTGTGTGCGGCAGTGGCATGAC  
ATCCCTGCTCATGAACTCTGTGTACCCTCGAGAGCAGATCAACCAGTCACTTCCATACATTGACGCATCC  
AATGTGTATGGCAGCACAGACCAGAAGCCCGGAGCATCCGGGACCTGGCCAGTCACTCGTGGCCTGCTAC  
GTCAGGGTATCGTGCAGAGGTCTGGCAAGCCCCTGCTTCCCTTGGCCAGGGGCCACCCACTGAGTGTAT  
GCGTGTAGAGAATGAGAGTCCAATACCGTGTCTTCTGGCCGTGACCATCGTCCCAACGAGCAGCTGGGC  
CTGACCAGCATGCATACGCTGTGGTCCGGGAGCACAACCGCATCGCAGCAGAGCTGTTGAAGCTGAACC  
CGCACTGGGATGGGACACTGTCTACCATGAGACCCGCAAGATAGTGGGGCAGAGATCAGCAGCATTAC  
CTACCGCACTGGCTACCAAGATCCTGGGGAGGTGGGCATGAAGATGCTAGGTGACTCCGGGCTGAC  
GACCCGCGTCAATGCTGGCATCTTTAATGCCTTGGCCACCGCAGCCTTCAAGTTCGGTACACACTCTGA  
TCAACCCTCTGCTCTACCGGCTGGATGAGAATTTGAGCCATCCACAGGGCCACGTGCCCTCCACAA  
AGCCTTCTTCCACCCTCCGGATTGTCAATGAGGGGGGCATCGACCCACTTCTCCGAGGGCTGTTTGG  
GTGGCAGGGAAGATGCGCATTCCCTCTCAACTGCTGAACACTGAGCTCACAGAGAGGCTTTTCTCCATGG  
CACACACAGTGGCCCTTGACCTGGCTGCCATCAATATCCAGCGAGGCCGGGACCATGGCATCCCACCCTA  
CCATGACTACAGGCTACTGCAACCTGTCAGCCGCTTATACCTTTGAGGACCTGAAAAATGAGATCAAG  
AGTCCCGTATCCGGGAGAACTGCAGAGGCTATATGGCTCGACACTCAACATCGATCTGTTCCCGGCC  
TCATGGTGAAGACCTGGTCCCCGCGAGCCGCTGGGGCCACACTCATGTGCCTGCTCAGCACACAGTT  
CCGACGCCTGCGGATGGAGACAGGTTGTGGTATGAGAACCAGGCGTGTCTCCCTGCCAGCTGACT  
CAGCTCAAGCAGACATCCCTGGCGAGGATCCTTTGTGACAACCTCAGACAACATCACCCGCGTGCAGCAG  
ATGTGTTCAAGGTGGCAGAGTCCACACCGTTACAGCAGCTGCGAGGACATCCCCAGAATGGACCTGCG  
AGTGTGGCAGGACTGTTGTGAAGACTGTAGGACCAGGGGACAATCAATGCCTTCTCCTACCATTCCGG  
GGAAGAAGGTCTCTAGAATTCAGCTATGAGGAGGATAAGCCACAAAAGAGAGCCAGGTGGCGGAAAGCAC  
TAAGTGTAAAACATGGGAAACATCATAGCAATGCCACATCAGTCACCATGAGCACTTGGAAAGGCCAGC  
AACTAATGATCTCAAGGAGTTTGTCTAGAAATGCAAAAGATCATCACAGACCTCAGAAAACAGATAAAC  
AGCCTGGAGTCTCGGCTCAGCACACAGAGTGTGTGGATGACAGTGGTGAATCCCAGGCAGCAACACGA  
AGTGGGAAAAAGACACATGCACAGTTTGGGAGTGCAAAAATGGCCAGGTACCTGCTTTGTGGAAGCTTG  
CCAGCCTGCAGCCTGCCGACGCTGTGAAAGTGAAGGCGCTTGTGTCTGTCTGCTTAAAGAACACT  
GAAGAGGAAAAGCCT

ACGCGTACGCGGCCGCTCGAGCAGAACTCATCTCAGAAGAGGATCTGGCAGCAATGATATCCTGGATT  
ACAAGGATGACGACGATAAGGTTTAA

Protein Sequence: >RR217637 representing NM\_001271261  
 Red=Cloning site Green=Tags(s)

MAVRPTRRCLLALVLCFAWAMAVVASKQGAGCPSRCLCFRTTVRCMHLLEAVPAVAPQTSILDRLFNR  
 IREIQGAFRRRLNLTLLNNNQIKKIPSGAFEDLENLKYLYLKYNEIQSIDRQAFKGLASLEQLYLFH  
 NQIETLDPEFQHLPKLERLFLHNNRITHLVPGTFSQLESMKRLRLDSNALHCDCEILWLADLLKTYAQS  
 GNAQAAATCEYPRRIQGRSVATITPEELNCRPRITSEPQDADVTSGNTVYFTCRAEAGNPKPEIIWLRNN  
 NELSMKTD SRLNLLDDGTLMIQNTQEADGVYQCMKAVAGEAKTHEVTLRYLGS PARPTFVIQPNTEV  
 LVGESVTLECSATGHPLPQITWTRGDRTPLPIDPRVNITPSGGLYIQNVAQSDSGEYTCFASNSVDSIHA  
 TAFIIVQALPQFTVTPQSRVIEGQTVDFQCEAKGYPQPIAWTKGGSQSVDRRHVLVSSGTLRISGVA  
 LHDQGGYECQAVNIIGSQKVV AHLTVQPRVTPVFASIPSDMTVEVGTNVQLPCSSQGEPEPAITWNKDG  
 QVTESGKFHISPEGFLTINDVGTADAGRYECVARNTIGYASVSMVL SVNVDPVSRNGDPYVATSIVEAIA  
 TVDRAINSTRTHLFDSRPRSPNDLLALFRYPRDPYTVGQARAGEIFERTLQLIQEHVQHGLMVDLNGTSY  
 HYNDLVSPQYLSLIANL SGCTAHRRVNNCSDMCFHQKYRTHDGT CNLQHPMWGASLTA FERLLKAVYEN  
 GFNTPRGINSQRQYNGHVL PMPRLVSTTLIGTEVITPDEQFTHMLMQWQGF LDHDL DSTVVALSQARFSD  
 GQHCVSSVCSNDPPCF SVMIPPNDPRVRS GARC MFVRS SPVCGSGMT SLLMNSVYPREQINQL TSYIDAS  
 NUYGSTDHEARSIRDLASHRGLLRQGI VQRSGKPLL PFATGPPTECMRDENESIPCF LAGDHRANEQLG  
 LTSMHTLWFREHNRIAAELLKLNPHWDGDTVYHETRKIVGAEIQHITYRHWP KILGEVGMKMLGEYRGY  
 DPSVNAGIFNAFATAAFRFGHTL INPLL YRLDENFEPI PQGHVPLHKAFFSPFRI VNEGGIDPLL RGLFG  
 VAGKMRIPSQLLNTEL TERLFSMAHTVALDLAAINIQRGRDHGIPPYHDYRVYCNLSAAYTFEDLKNEIK  
 SPVIREKLQRLYGSTLNIDLFPALMVEDLVPGSRLGPTLMCLLSTQFRRLRDGDLWYENPGVFS PAQLT  
 QLKQTSLARILCDNSDNI TRVQHDVFRVAEFPHGYS SCEDIPRMDLRVWQDCCEDCRTRGQFNAFSYHFR  
 GRRSLEFSYEEDKPTKRARWRKALSVKHGKHHSNATSVTHEHLEGPATNDLKEFVLEMQKIITDLRKQIN  
 SLESRLSTTECVDDSGESHGSNTKWEKDTCTVCECKNGQVTCFVEACQPAACPQPVKVEGACCPVCLRNT  
 EEEKP

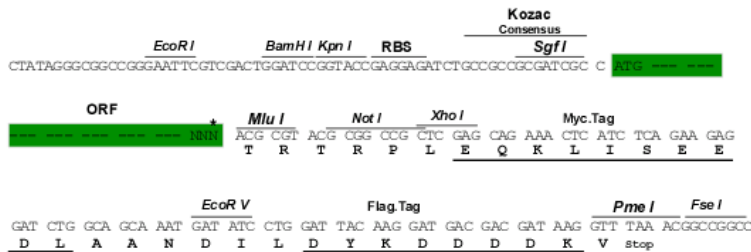
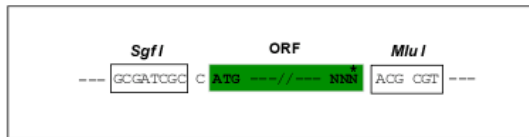
TRTRPLEQKLISEEDLAANDILDYKDDDDKV

Restriction Sites:

Sgfl-MluI

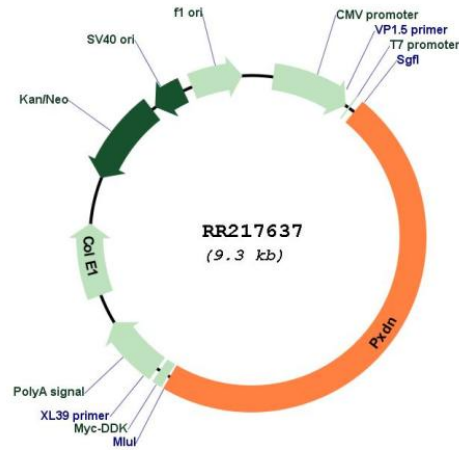
Cloning Scheme:

Cloning sites used for ORF Shuttling:



\* The last codon before the Stop codon of the ORF

Plasmid Map:



ACCN: NM\_001271261

ORF Size: 4425 bp

OTI Disclaimer: The molecular sequence of this clone aligns with the gene accession number as a point of reference only. However, individual transcript sequences of the same gene can differ through naturally occurring variations (e.g. polymorphisms), each with its own valid existence. This clone is substantially in agreement with the reference, but a complete review of all prevailing variants is recommended prior to use. [More info](#)

OTI Annotation: This clone was engineered to express the complete ORF with an expression tag. Expression varies depending on the nature of the gene.

Components: The ORF clone is ion-exchange column purified and shipped in a 2D barcoded Matrix tube containing 10ug of transfection-ready, dried plasmid DNA (reconstitute with 100 ul of water).

**Reconstitution Method:**

1. Centrifuge at 5,000xg for 5min.
2. Carefully open the tube and add 100ul of sterile water to dissolve the DNA.
3. Close the tube and incubate for 10 minutes at room temperature.
4. Briefly vortex the tube and then do a quick spin (less than 5000xg) to concentrate the liquid at the bottom.
5. Store the suspended plasmid at -20°C. The DNA is stable for at least one year from date of shipping when stored at -20°C.

**RefSeq:** [NM\\_001271261.1](#), [NP\\_001258190.1](#)

**RefSeq Size:** 6563 bp

**RefSeq ORF:** 4428 bp

**Locus ID:** 554172

**Cytogenetics:** 6q16

**MW:** 165.4 kDa