

Product datasheet for RR217620

Cux2 (NM_001271380) Rat Tagged ORF Clone

Product data:

Product Type:	Expression Plasmids
Product Name:	Cux2 (NM_001271380) Rat Tagged ORF Clone
Tag:	Myc-DDK
Symbol:	Cux2
Synonyms:	Cutl2
Vector:	pCMV6-Entry (PS100001)
E. coli Selection:	Kanamycin (25 ug/mL)
Cell Selection:	Neomycin
ORF Nucleotide Sequence:	>RR217620 representing NM_001271380 Red=Cloning site Blue=ORF Green=Tags(s)

TTTTGTAATACGACTCACTATAGGGCGCCGGGAATTCGTCGACTGGATCCGGTACCGAGGAGATCTGCC
GCC**CGATCGCC**

ATGGTAGCCCCAGTGCTGAAAAGCTTCCAAGCTGAGGTGGTGGCTCTCAGTAAGAGAAGTCAGGAGGCAG
AGGCAGCATTCTGAGTGTATTAAGCAATTAATTGAAGCGCCAGACCCTGTCCCCTCGGTTGAGGTGGC
GCGGACTCTAGACGACAGACTGCAGCGTCCCAGCTTCCACCCAGTGGGAGCGCCTACGAGACGTGCAC
ATCTCGTGAAGAGGTGCCAGAGCCACCCAGTGCAGAGAGCAGAACGAGGGGACGTGTCCACCAGGGC
ACACGCCAGCCAACGGTAACCACCTGCCAGGTCCCAGGACACCCCTCGTGACAGACACCTTGTGCAGAA
GGATGAGGCCGAGAGACAGAAGGGCCTCCAAGAAGTCCACGTACCTTGGCAGCCAGGCTGGGGGAGGCA
GAGGAGAAAAATCAAGGTGTTACATTCAGCGCTAAAGGCCACACAGACGGAGCTGTGGAGCTGAGGAGGA
AATACGATGAGGAGGCTGCATCCAAGGCCGATGAGGTGGCTTGATCATGACGAACCTGGAGAAGGCCAA
CCAGCGAGCAGAGGCTGCCAGCGGGAGGTAGAAAAGCCTCCGGGAGCAGCTGGCATCGGTCAACAGCTCC
ATTGCGCTGGCTTGCTGCTCCCCGAGGGACCCGGTGGGAGAAAGGTGAGCTTCGCCCTGTGCTCAGGGC
CCCGCTGGAGGCAGCGCTGGCTTCCAAGGACAGGGAGATCCTCAGGCTGTGAAGGACGCCAGCCAGCAGT
GCGGCACTCTCTGAGGAGCTGGAAGAGGTCTCAGCCAACCAAATCGCTGATCTGGAGCGGCAGCTAGCG
GCCAAGTCTGAGGCCATAGAGAACTCCAAGAAAAGCTGGAGGCCAGGCTGACTATGAAGAGATTAATA
CAGAGCTGAGCATCCTGAGAGCCATGAAGCTGGCTCCAGCACGTGCAGCCTCCCACAGGCGCTGGGCAA
GCCTGACGACCCACTGCTCATGGCAAGGATGCCTTCTCCCCACAGAAAGCTCCTGCTGGAAAAGCCC
GCGCTGTGGCCAGCCCTGAGGAGGACCCCTCGGAGGATGACTCTATCAAGGGCTCACTGGGCATGGAGC
CCTCTACCTCCTCAGCTTCCACCTCCGCCAGGCCCTGAAGACCCGCTGTCCCCAAGCCCTACGCAGCC
CCTGCTGGGCCCCAGCCTGGGTCTGATGGACCAAGGACTTCTCGCTGTCCCCCTCCCCAGCCTGGCA
CCGGGGGAGAGGCTGGCTGGGGACCCACTGCTGTCCAACATATGATGGCCCCAGTTGCCTTCAAAGGGG
AAACGGGCAACCTGCTGGCATTCCACCCGGCTTCTATGGCGGTGCCAAGCCTCCAACGGCTCCTGCCGC
CCCAGTGCCCGCCCTGAGCCCTCTGGGCCCCAGAGCCTGTGGACGGGGCTGGGCCAGAGGAGGAGCAG
CTGGACACGGCCGAGATCGCCTTCCAGGTGAAGGAGCAGCTTCTGAAGCACAAACATTGGCCAGCGTGTGT



[View online »](#)

TTGGCCACTATGTGCTGGGACTGTCGCAGGGCTCGGTGAGTGAGATCCTGGCACGGCCAAAGCCGTGGCG
CAAGCTCACGGTGAAGGGCAAGGAGCCCTTCATCAAGATGAAGCAGTTCCCTGTGGATGAGCAGAACGTG
CTGGCCCTGCGCACCATCCAGGTGAGGCAGCGAGGCAGCATACCCCCGAGAATCCGAACTCTGAGACCG
GCTCAGACGACGCCATCAAGAGTATCCTGGAGCAGGCCAAGAAGGAGATTGAGTCTCAGAAAGGGGGTGA
GTCCAAGAACTCCCCTGCCTCCGTGAGCATCCCCAACGGCACAGTTCCTCCAGCACCTCGGAAGACGCC
ATCAAGAACATTTGGAACAAGCCCGCCGAAATGCAAGCCCAGCAGCAGGCCCTGTGGAGATGGAGT
CGGGTCCCAGGGCCGCTCAGTGCCCTCCCTCTCCTCCGGAGCGGCCCTCGCCAGCCACTATGAGCCAGAA
TGGGGCCCTGGCCTGCGTGAAGCAGGAAGACGGCGGCTGCAGCAGCAGCAGTAGCCGGCAGTGCGCAGGGCG
CCGCTTGCTGTCTGTCCCCGCTGCATTTGTGCAGCGGATCATCCGCAAGGTGAAGTCAGAGATCGGGCG
ACGCTGGTACTTTGATCACCCTGGGCATCAGACCGTGGTCTGCTCAGCCGTCCCTACGCCTCCGTGTC
ACCTTCCCTCTCCTCCTCCTCCAGTACTCGGGACAGCCCAATGGGCGAGCCTGGCCCCGTGGGACGAG
GCAACCATTGCCCTGAGGACGAAGCGGCTACGGGCATGGGGGAGGACGAGGCCCCAGGGTGGGAGAGC
TCAAGGCCGAGGCCGAGTCTCCGAGGTGGTGGCGGGGACTGCCCTACTACCCAGCGTATGTGCCCG
CACACTCAAGCCACTGTGCCGCCCTAACACCCGAGCAATACGAGCTATACATGTACCCGGGAGGTAGAC
ACTCTGGAGCTCACCCGCAAGTCAAGGAGAAGCTAGCCAAGAAGGCATCTGCCAGCGCATCTTTGGGG
AGAAGGTCTGGGACTGTCTCAGGGCAGCGTGAGTGACATGCTGTACGGCCAAAGCCATGGAGCAAGCT
GACACAGAAGGGCCGGGAGCCTTTCATCCGCATGCAGTTGTGGCTATCAGACCAGCTGGGCCAGGGCCAG
GCCCAAACCAGCAGCCAGCGCTAGCCAGGCCAGCCCCAGGAGCCAACGTCTCCACCATCACCTCCCC
CAAGCCCCACGGAGCCTGAAAAGACTTCCCAGGAGCCTCTGGGCCTGTCCCTAGAAAAGCAGCAAGGAGAA
TCAGCAACCAGAGGGCCGGGCGAGCTCCACCCTGGGTGGGAAGCCCTCTCAAGCAGCCAGACTACGGGG
GGCATCCAGGAGATGGTGGCCATGTCCCCAGAGCTGGACACATACTCCATCACCAGAGAGTCAAGGAGG
TCCTCACGGACAACAACCTAGGGCAGCGGTTGTTTGGTGAAGCATCCTGGGGCTAACACAGGGCTCCGT
GTCAGACTGCTGTGAGGCCAAAGCCCTGGACAAGCTGAGCTTGAAGGGCCGGGAGCCCTTTGTGCGC
ATGCGGCTGTGGCTGAGCGACCCCAACAATGTGGAAGGCTTCGAGATGTGAAGAAGCTGGAGAAGAAAG
CCTATCTGAAACGCCGATACGGGCTCATCAGCAGGGGCTCTGACAGCGAGTACCAGGAGCTCACTCCGA
GTGTCCCAGCCATGTCTGCAGCCGAGGAGTTGAGCCTCATGCAGGCCAAGAAGCCACGTGTGGTGTCTG
GCACCGGCCGAGAAGGAGGCTCTGCGGAAGGCCTACCAGCTAGAGCCCTACCCCTCACAGCAGACCATAG
AGTTGCTCTCTTCCAGCTCAACCTCAAGACAAACTGTCTCAACTGGTTCACAACACTACAGGTCCAG
GATGCGCCGGGAGATGCTGGTGGAGGGAACACAGGATGACCCAGACTTTGACCCAAGTGGGGCTCCAGT
GTCCTGCCATCAGGCCACACCCACACAGACCCACCCCGCAGAGCCCTGACTCAGAGATTGAGGACCAA
AGCCCCCATGAAGAGCCTGGAGCTGCAGGAACCTGAGAGTCCCGTACACCAAGCAGCCCAGACAGGGC
TGTGGTGAAGATTAAGCAGGAAGAGGGTTAGAGGTGGATGGGGACAGCCAGCCCAGGACATAGGGGAT
CCAGACAGAGGGCAAGGTGGCCCCAAAGAGGAGGATACTACCCTCTGGGGAACAATGAACTCTCAGAGC
TGGTCCCCGGGCTTTCCCTTCCAGGCACACCCAATCCAGACTGCTCTTATTGCACACCCCCAAGCAAA
AGAGACTGGGGAACAGGTTCACTCAGAGCCTCTGAGTTTCAAGTCCACCTCTGAATCCTCATGCTGCAGC
CTGGAGGGGCCACCGAATCTCCCTCTGCCATCTCCTCGCCAGACCTCATGACATGTGTGTACCCGCCC
CTTCTCTCAGCCCCATCTCCCATCCCTACCTGGCACCTACCTGCCAAAGTGCCGAGTACCAGTCC
CACTGCTGACCCAGCTGCAGCCTTGACCCACAGCACTAAGGTGAACCCCAACTTGACGGCGGCATGAG
AAAATGGCCAACCTGAACAGTATAATCTACCGACTGGAGAGGGCTGCCAACCGGGAAGAGGCTCTGGAGT
GGGAATTC

ACGCGTACGCGGCCGCTCGAGCAGAACTCATCTCAGAAGAGGATCTGGCAGCAATGATATCCTGGATT
ACAAGGATGACGACGATAAGGTTAA

Protein Sequence: >RR217620 representing NM_001271380
 Red=Cloning site Green=Tags(s)

MVAPVLKSFQAEVVVLSKRSQEAEEAFLSVYKQLIEAPDPVPSVEVARTLDDRLQRPSFHPSPGQRLRDVH
 ISWKRCPEPPSAREQNEGTCTPTGHTPANGNHLPGPEDTLVTDLLQKDEAERQKGLQEVHVTLAARLGEA
 EEKIKVLHSALKATQTELELRKYDEEAASKADEVGLIMTNLEKANQRAEAAQREVESLREQLASVNSS
 IRLACCSPOGGGKVSFALCSGPRLEAALASKDREILRLLKDAQQLRHSLQELEEVSANQIADLERQLA
 AKSEAIKLEKLEAQADYEIIEIKTELSILRAMKLASSTCSLPQALGKPPDPLLMAKDAFFPTQKLLLEKP
 ALLASPEEDPSEDDSIKSGLGMEPSYPPQLPPPPGPEPDLSPSPPTQPLLGPPLGPDGPRTFSLSPFPLA
 PGERLAGDPLLSKHMMAPVAFKGETGNLLAFPPAFYGGAKPPTAPAAPVPGPEPSGAPEPVDGAGPEEEQ
 LDTAEIFVQVKEQLLKHNIGQRVFGHYVGLSQGSVSEILARPKPWRKLTVKGKEPFIKMKQFLSDEQNV
 LALRTIQVRQGSITPRIRTPETGSDDAIKSILEQAKKEIESQKGGESKNPSASVSPNGTASSTSEDA
 IKNILEQARREMQAQQALLEMESGRGRSVPPSPPPERPATMSQNGALACVKQEDGGCSSSSSSGAQA
 PLAVLSPAAFVQRIIRKVKSEIGDAGYFDHHWASDRGLLSRPYASVSPSLSSSSSSYSGQPNGRAWPRGDE
 ATIAPEDEAATGMGEDEAPRVGELKAEAGVSEVGGGRLPYYPAYVPRTLKPTVPPLTPEQVELMYREVD
 TLELTRQVKEKLAKNGICQRIFGKVLGLSQGSVSDMLSRPKPWSKLTQKGREPFIQMQLWLSQDQGGQ
 APNQQPSASQASPTPTSSPPSPTEPEKTSQEPLGLSLESSKENQQPEGRASSTLGGKPLSSSQTTG
 GIQEMVAMPELDTYSITKRVKEVLDNNLGQRLFGESILGLTQGSVSDLLSRPKPWHKLSLKGREPFR
 MRLWLSDPHNVEKLRDVKKLEKKAYLKRRYGLISTGSDESAAHSECPSPCLQPQELSLMQAKKPRVVL
 APAEKEALRKAYQLEPYPSQQTIELLSFQLNLKTNVWNVFNHYSRMRREMLVEGTQDDPDFDPSGGSS
 VLPSGHTHTDPTQSPDSEIEDQKPPMKSELEQEPESVHQAAPDRAVVKIKQEEGLEVDGDSQPQDIDG
 PDRGQGGPKEDTHPLGNNELSELVPGPFLPGTPNPDCSSLHTPQAKETGEQVHSEPLSFKSTSESSECCS
 LEGPPNSPSAISSPDLMTCVSPAPSSSAPISPSLPGTLPAKVPSTSPADPAAALHPSTKVNPNLQRRHE
 KMANLNSIIYRLERAANREALEWFEF

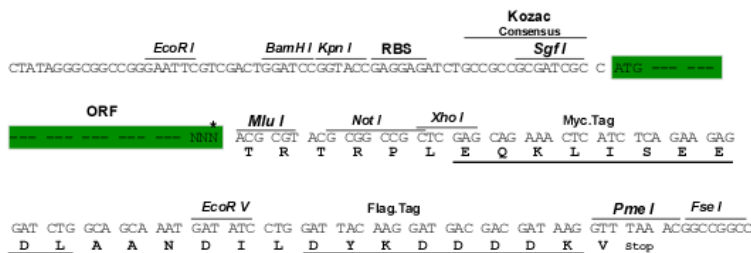
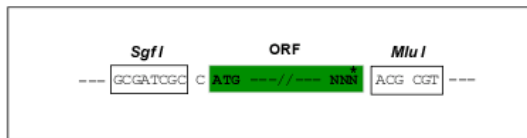
TRTRPLEQKLISEEDLAANDILDYKDDDDKV

Restriction Sites:

Sgfl-MluI

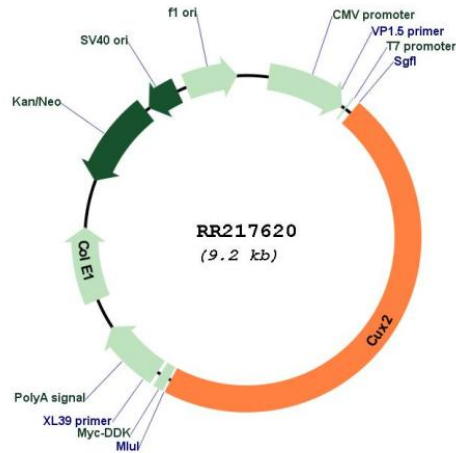
Cloning Scheme:

Cloning sites used for ORF Shutting:



* The last codon before the Stop codon of the ORF

Plasmid Map:



ACCN: NM_001271380

ORF Size: 4278 bp

OTI Disclaimer: The molecular sequence of this clone aligns with the gene accession number as a point of reference only. However, individual transcript sequences of the same gene can differ through naturally occurring variations (e.g. polymorphisms), each with its own valid existence. This clone is substantially in agreement with the reference, but a complete review of all prevailing variants is recommended prior to use. [More info](#)

OTI Annotation: This clone was engineered to express the complete ORF with an expression tag. Expression varies depending on the nature of the gene.

Components: The ORF clone is ion-exchange column purified and shipped in a 2D barcoded Matrix tube containing 10ug of transfection-ready, dried plasmid DNA (reconstitute with 100 ul of water).

Reconstitution Method:

1. Centrifuge at 5,000xg for 5min.
2. Carefully open the tube and add 100ul of sterile water to dissolve the DNA.
3. Close the tube and incubate for 10 minutes at room temperature.
4. Briefly vortex the tube and then do a quick spin (less than 5000xg) to concentrate the liquid at the bottom.
5. Store the suspended plasmid at -20°C. The DNA is stable for at least one year from date of shipping when stored at -20°C.

RefSeq: [NM_001271380.1](#), [NP_001258309.1](#)

RefSeq Size: 5092 bp

RefSeq ORF: 4281 bp

Locus ID: 288665

Cytogenetics: 12q16

MW: 154.6 kDa