

Product datasheet for **RR217613**

Uaca (NM_001195564) Rat Tagged ORF Clone

Product data:

Product Type:	Expression Plasmids
Product Name:	Uaca (NM_001195564) Rat Tagged ORF Clone
Tag:	Myc-DDK
Symbol:	Uaca
Synonyms:	RGD1560011
Vector:	pCMV6-Entry (PS100001)
E. coli Selection:	Kanamycin (25 ug/mL)
Cell Selection:	Neomycin
ORF Nucleotide Sequence:	>RR217613 representing NM_001195564 Red=Cloning site Blue=ORF Green=Tags(s)

TTTTGTAATACGACTCACTATAGGGCGGCCGGGAATTCGTCGACTGGATCCGGTACCGAGGAGATCTGCC
GCC**GCGATCGC**C

ATGAAGAGCCTCAAGTCCCGGTGTGGAGGCAGGACGCGCCCGGTCCACGTACCCACATCTCCCACCG
CGGTGACCAGTTCGCTTTCAGCAGAGTGAATAAATACGATGACCGGTGATGAAGGCTGCTGAAAGGGG
GGATGTGGAGAAAGTATCCTCTATCCTTGCCAAAAAGGGCGTCCATCCAGGCAAGCTGGATGTGGAAGGC
AGATCGGCCTTCCACGTCGTGGCAGCCAAAGGGAATCTGGAGTGTCTGAACGCCATTCTTACTCATGGCA
TTGATGTTGCAACCAGGGACAGTGCAGGGAGGAATGCGCTTCCACTGGCAGCTAAGTACGGACACGCGTT
GTGCCTACAGAACTTCTACAGTACAAGTGTCCCACTGAGCATGTGGACCTTCAGGGAAGAACCAGCCCTA
CACGACGACGCAATGGCGGACTGTCCTTCCAGCATCCAGCTGCTTGTGACCATGGGGCCTCCGTGAATG
CCAAAGATATAGACGGGCGGACACCACTTGTCTGGCGACTCAGATGTGCAGGCCGCAATTTGTCAGTT
GCTGATAGACAGAGGGGCGGATGTCAATTCAGAGACAAAACAAACAGGACAGCCCTCATGCTGGGCTGT
GAGTACGGTTGCAGAGACGCTGTAGAAGTCTCGTGAGAAATGGGGCCGACTTGACCTTGCTGGATGCC
TTGGCCATGACAGTTCTTACTACGCGAGAATTGGTGACAATCTGGACATCCTGAACCTGCTGAAGACAGC
GTCAGAAAGCACCAGCAAAGGTGGCAGGAGAGAACTTTGGAGGAAAGGACCGCCTTTGCAACAGCGGAAT
TTGTACACACTCAAGATGAAGGAAATGTGAAGTCAAATCAGAGAGAACCACAGCTTTTCAGGATCTAG
AGATGGAAAATGAAGATTTGAAAGAGAAGTTGAGGAAGATTCAGCAAGAGCAAAGAATACTCCTGGATAA
AGTCAACGGCTTACAGTTACAGCTGAATGAGGAAGTCAATGTTGCAGATGATCTGGAAAGCGAGAGAGAA
AAGCTGAAGTCCCTTTTGGCAGCTAAAGAAAAGCAGCAGCAAGAAAGCTTACGAACCATCGAGGCCCTGA
AAAACAGATTTAAATATTTTGGAGTGTATCCAGGACCCGGAAGTTACTCGAGTAACCGAAAAGAAGA
CATGCTTCATAAACAAGGTCAAATGTACACGGCAGATTCACAGTGTACATCACCAGGCGTACCCCCCAT
ATGCAGAGTAGGTCTATGTTAAGGCCTCTGGAGTTGTCTTTACCAAGTCAGACCTCATACTCTGAAAATG
AGATTTTAAAGAAAGAGTTGGAAGCTATGCGAACTTTCTGTGACTCGGGCAAACAGGACCGACTGAAGCT
CCAAAACGAGTTGGCGCACAAGTTGCGGAGTGCAAAGCCTTGCTCTGGAGTGCAGAGAGTCAAGGAG
GACTCAGACGAGCAGATCAAGCAGCTGGAAGATGCCCTCAAAGATGTGCAGAAGAGGATGTATGAGTCGG



[View online »](#)

AAGGCAAAGTCAAGCAAATGCAGACCCACTTCCTGGCCCTCAAAGAGCACCTGACCAATGAAGCAGCCAC
GGGGAGCCACCGCTCATCGAGGAGCTGAGGGAGCAGCTGAAAGACATGAAAGGGAAATATGAAGGCGCT
TCAGCAGAAGTGGGCAAGCTGAGGAACCAAATCAAACAGAGCGAGATGCTGGTAGAAGGGTTCAAGAGGG
ACGAGAGCAGGCTGGTGGAAAGAGAATAAGAGATTGAGAAAGGAATGCAGCACGTGTGAAATAGATCGGGA
GAGGAGGGGGCGGAGGGTCACGGAGCTGGAGGGCCAGCTCAAAGAGCTGGGGGCTAAGCTGGCCCTTCC
GTGCCACAGAGACATTTGAAAGCATGAAGAGCTCGTTATCCAATGACATCAGTGAGAAAAGCGAAAAGGC
TAGCGGAGGTGGGGCGGACTATGAAAGCTCTCAGGGGAGATTGACAGCTGAAGAGGGATCTGGAGAG
CGTTAGGGCCAGCACATCAGACCGGAGGAGCATGAGCAGCTCAGGAGCAGGTTGGAGCAGAAAGTCGGGA
GAGCTGGGGAAGAAAGTGACAGAGCTAACCCCTGAAAAACCAGACACTCCAGAAAAGAGTGGAAAACTCT
ACGAGACAACAACTCCTCAACCAGCAGGTGCACAGCCTCACGGTGGAGATGAAAACCTCGTATGTGCC
TTTGGGGTACGCGAGGAGATGAAGAAGGCGCATGATGTGAATGTGGAGGATTTGAATAAGAAGCTTTCCG
GATGCAACACAGAGATACGCAGAGAAGAAGCTAGAAGCAGAGAGACTGCTGGCAGAGAACGATAAGTTGA
CCAAGAAGCTCAGCCGCTGGAAGCTGTGTTGTAGCTCCCGAGAAACATGAAAAGGAGCTAATGGGTCT
GAAATCCAATATCGTGAATAAAAATGCAGCTGTGTGAGCTTAATAAAAAATGTGGTGAGGGTCAGGAG
AAAATACGTGCGCTTATGTCTGAAAACACCAGCTTAAAAAGACTCTGAGTAGCCAGTACGTGCCTGCCA
AAACCCACGAGGAGGTGAAGGCCTCCCTGAGCAGCACTTTGGAGAAAACCAACAGAGCTTATTGGACTC
GAAGAAAAGGCTTGACGACACGAGCCAGGAATTTTCAAACTAAGGGAGGAGAATGAAGTGTGGAGGAGG
AACCTGGAGAACGTTTCAAGTACAGTGAAGGCTGACTACGTGAGCCTGGAGGAACACTCGAGAAAGATGA
ACATGGCGAACAGAGCTGAAGGAGGCGCAGGATGCCACACTGCCCTCCTGGCTGACTACCGCCAGGG
CCAGGAGGAGATCGTACGCTGCACGCAGAAATTAAGGCCAGAAAAAGGAGCTCGACACCATCCAAGAA
TGCATCAAGCTAAAATATGCTCCCTCTCCCGAATGGAAGAGTGTGAACCAAGTTCAAGGCTACAGAGA
AAGCAAGAGAAATGAGAGGCTGAGGAAGGATCTCGCCGCTTCCAGAGGAGCTGAAGGATAGGAATGTT
CTGGTGGAAAGAGGCCAGGGAGGCAGAAAGAGCACTGAGCAGGAAGACAGAAAGAACTCGGCAACAGCTGA
AGGAAGTGTCCAGAAAGTACAGCGATGTGAAGAGCGAGAGAGAGAAGCTGGTGGAAAGAAAAGGCCAAGCA
GACTTCCGAGATCCTTGACGCCAAAATCTTCTGCAAAAAACAGCCAGTCCCACTGGAGCAGGTGGAGGCT
CTCAAAACATCTCTAACGGCACAATCGAGCACCTAAAGGAGGAGCTGAGGAGTAAGGAGAGGTGTCTGG
AGAGAGAGCAGCAGGCGGTGAGCCAACCTCAGCAGCTGCTGGAGAATCAGAAGAGCTCCTCCGTGACCCT
GGCGGATCACCTGCAGCTAAAGGAAGCCTTGGAGAAAGAGGTTGGGATCATGAAAGCCAGCCTGAGAGAG
AAGGAAGAGGAAAGCCAGAAGAAAACCAAGAAGTCTCCAACTCCAGACCGAGGTCCAGAACCAAGC
AGGCGCTGAAGAACTTAGAGACCAGAGAGGTCGTGCATGTCAAATACAAAGCCACCAAGAATGATTT
GGAGACCCAGATTTCAAACCTAAATGACAACTGGCCAGTCTGAACAGGAAGTACGACCAAGTGTGTGAG
GAGAAGTCTCTGCCAAGGACGAGAAGGAGCTGCTGCATCTAACATCGAGCAGGAGATCAGGGACCAGA
AGGAGCGGTGTGACAAGTCCCTGACAACCATCATGGAGCTGCAGCAGAGGATACAGGAGTCCGCCAAGCA
GATCGAAGCAAAGGACAATAAGATAACTGAACTTCTGAATGATGTGAAAAGACTAAAGCAGGCGCTCAAT
GGCCTTCCCAGCTCACCTACAGCAGCGGCGGCCCAACCAAGCGGCAGAGCCAGCTAGTGGACACCCTGC
AGCAGCGAGTGAAGGATCTGCAGCAGCAGCTGGCTGATGCTGACAGACAGCACCAGGAAGTATCGCTAT
CTACCGGACACACCTCCTCAGTGCCGCACAGGGTCACATGGATGAAGATGTGCAGGCAGCCTTGTGCAG
ATCATAACAGATGCGACAAGGCCTCGTGTGC

AGCGGACCGACGCTACGCGGCCGCTCGAGCAGAACTCATCTCAGAAGAGGATCTGGCAGCAAATGATATCC
TGGATTACAAGGATGACGACGATAAGGTTAA

Protein Sequence: >RR217613 representing NM_001195564
 Red=Cloning site Green=Tags(s)

MKSLKSRLEWRQDAPGPTSPTAVTSSLAEWNKYDDRLMKAERGDVEKVSSILAKKGVHPGKLDVEG
 RSAFHVVAAGNLECLNAILTHGIDVATRDSAGRNALHLAAKYGHALCLQKLLQYNCPTHEVDLQGRAL
 HDAAMADCPSSIQLLCDHGASVNAKDIDGRTPVLATQMCRTICQLLIDRGADVNSRDKNRTALMLGC
 EYGCRAVEVLVRNGADLTLLDALGHDSSYYARIGDNLIDLNLKKTASESTSKGGRRELWRKGPPLQQRN
 LSHTQDEGNVKSNOREHHSFQDLEMENEDLKEKLRKIQQEQRILLDKVNLQLQLNEEVMVADDLESERE
 KLKSLLAAKEKQHEESLRTIEALKNRFKYFESDHPGPGSYSSNRKEDMLHKQGGMYTADSQCTSPGVPPH
 MQSRSMRPLELSLPSQTSYSENEILKKELEAMRTFCDSAKQDRLLKQNELAHKVAECKALALECERVKE
 DSDEQIKQLEDALKDVQKRMYESGKVKQMTHFLALKEHLTNEAATGSHRVIEELREQLKDMKGKYEGA
 SAEVGLRNQIKQSEMLVEGFKRDESRLVEENKRLQKECSTCEIDRERRRRTVELEGQLKELGAKLALS
 VPTETFESMKSSLNDISEKAKRLAEVGRDYESSQGEIRQLKRDLESVRAQHIRPEEHEQLRSRLEQKSG
 ELGKKVTELTLNQTLQKEVEKLYADNKLNLQVHSLTVMKTRVYPLRVSEEMKKAHDVNVEDLNKKS
 DATQRYAEKLEAERLLAENDKLTKNVSRLEAVFVAPEKHEKELMGLKSNIAELKMQLCELNKKCGEGQE
 KIRALMSENTSLKKTLSQYVPAKTHEEVKASLSSTLEKTNRALLDSKKRLDDTSQEFKSLREENEVLRR
 NLEENVQNMKADYVSL EEHSRKMNMANSLSKEAQDAHTALLADYRQGQEEIVTLHAEIKAQKKELDTIQE
 CIKLYAPLSRMEECERKFKATEKALKEQLSEQTHKGQVRDEEVKKGQENERLRKDLAALQKELKDRNV
 LVEEAREAERALSRTKEELGKQLKELSQKYSVKSEREKLVEEKAKQTSEILAAQNLQKQVPVLEQVEA
 LKTSLNGTIEHLKEELRSKERCLEREQQAVSQLQQLLENQKSSSVTLADHLQLKEALEKEVGMKASLRE
 KEEESQKTKVEVKLQTEVQNTKQALKNLETREVVDMSKYKATKNDLETQISNLNDKLASLNRYQDVCE
 EKVSADKEKELLHLNIEQEIRDQKERCDSLTTIMELQQRIQESAKQIEAKDNKITELLNDVERLKQALN
 GLSQLTYSSGGPTKRQSQLVDTLQQRVRLDQQQLADADRQHQEVIAIYRTHLLSAAQGHMDEDVQAALLQ
 IIQMRQGLVC

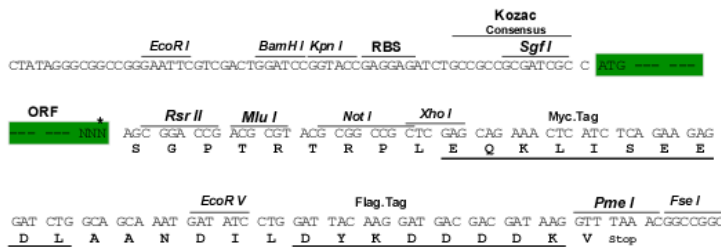
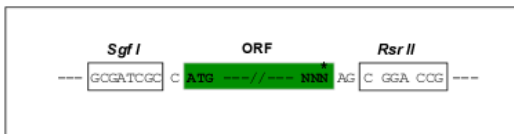
SGPTRTRPLEQKLI SEEDLAANDILDYKDDDDKV

Restriction Sites:

SgfI-RsrII

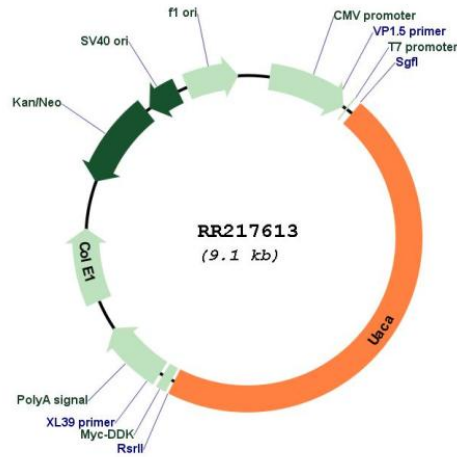
Cloning Scheme:

Cloning sites used for ORF Shuttling:



* The last codon before the Stop codon of the ORF

Plasmid Map:



ACCN: NM_001195564

ORF Size: 4230 bp

OTI Disclaimer: The molecular sequence of this clone aligns with the gene accession number as a point of reference only. However, individual transcript sequences of the same gene can differ through naturally occurring variations (e.g. polymorphisms), each with its own valid existence. This clone is substantially in agreement with the reference, but a complete review of all prevailing variants is recommended prior to use. [More info](#)

OTI Annotation: This clone was engineered to express the complete ORF with an expression tag. Expression varies depending on the nature of the gene.

Components: The ORF clone is ion-exchange column purified and shipped in a 2D barcoded Matrix tube containing 10ug of transfection-ready, dried plasmid DNA (reconstitute with 100 ul of water).

Reconstitution Method:

1. Centrifuge at 5,000xg for 5min.
2. Carefully open the tube and add 100ul of sterile water to dissolve the DNA.
3. Close the tube and incubate for 10 minutes at room temperature.
4. Briefly vortex the tube and then do a quick spin (less than 5000xg) to concentrate the liquid at the bottom.
5. Store the suspended plasmid at -20°C. The DNA is stable for at least one year from date of shipping when stored at -20°C.

RefSeq: [NM_001195564.1](#), [NP_001182493.1](#)

RefSeq Size: 4422 bp

RefSeq ORF: 4233 bp

Locus ID: 315732

Cytogenetics: 8q24

MW: 160.9 kDa