

Product datasheet for **RR217604**

Drosha (NM_001107655) Rat Tagged ORF Clone

Product data:

Product Type: Expression Plasmids
Product Name: Drosha (NM_001107655) Rat Tagged ORF Clone
Tag: Myc-DDK
Symbol: Drosha
Synonyms: Etohi2; RGD1307626; Rn3; Rnasen
Vector: pCMV6-Entry (PS100001)
E. coli Selection: Kanamycin (25 ug/mL)
Cell Selection: Neomycin
ORF Nucleotide Sequence: >RR217604 representing NM_001107655
Red=Cloning site Blue=ORF Green=Tags(s)

TTTTGTAATACGACTCACTATAGGGCGCCGGAATTCGTCGACTGGATCCGGTACCGAGGAGATCTGCC
GCCGGATCGCC

ATGCAAGGCAATACGTGTCATAGAATGTCTTACCACCCAGGACGAGGGTGTCCCCGGGACGAGGAGGAC
ATGGAGCCAGACCCTCAGCACCGACTTACAGGCCCAAAATCTGAGACTTCTTACCCTCAGCAGCTCC
TGCGCAGTATCAATATGAGCCTCCAGTGCCCCCTCTTCTCGTCTCGAACTCTCAAGCCCCAACTTT
ATGCCCCACGGCCTGACTTTGTCCCTTACCCTCCACCAGTTGCACCGTCAGCACAGGGCCTCTCCCAC
CCTGCCAGTTAGGCCCCCTTACCCCAACCACCAGATGAGACACCCTTCCCTGTGCCTCCCTGTTTTCC
ACCCATGCCCCCTCCAATGCCTTGTCCCAACAACCCCCAGTCTCCGGAGCACCTCCCGCCAAGGCACT
TTCCCCTTCATGGTCCCCCTCCTTCCATGCCCAACCCCCACCCCTCCCGTCATGCCGCAGCAGGTTA
ATTATCAGTACCCTCCTGGATACTCGCACAGTTTCCCGCCTCCCAATTTCAACAGTTTTTCAAGAACTC
CAGTTCTTTCCACCCAGTGCTAATAACAGCAGCACCCCTCATTTTAGACACCTCCCTCCATACTCACTT
CCCAAGGCTCAGAGTGAGAGAAGGTCCCCAGAGAGGCTTAAGCACTACGATGACCACAGGCCAGGATC
ACAGTACGGGGCAGGTGAGAGGCATCGTCCCTGGAGCGCAGAGAGCGCGGCCGAGCCGAGAGGAG
AAGACCTGAGAGCCGCTACCGCTCGGAATATGATCGGGGAGGACGCCACCGCCGCGCATCGCAGCTAC
GAAAGGAGCAGAGAGCGGAAACGAGAGACACAGGCACCGGAAAACCGCAGATCACCGTCTCTGAAA
GGGCTACAAAAGGAATATAAGAGATCTGGAAGGAGCTATGGCTTACCAGTCACTCCTGAGCCGCTGG
ATGCACAGCAGAATTACCTGGGAGATTATTAATAACAGATTCTTGGGCCCAACCCAGGAGAATGTG
AATCATCGTTCTCAAGCAGGGAGAAGAAGAGACGTTGGGAGGAGAAAAAGACAGGTGGAGTGACA
GCCAGAGCTCTGGCAAAGAGAAGAGCTATACGTCCATCAAAGAAAAGGAACAGAGGAGGCCGCCCTGA
GAAAACCGAGGAAGAGGACGAAGAGCTCCTCAAGCCGTGTGGATCCGATGCACACACTCGGAAAGTTAC
TACTCCAGTGACCCCATGGATCAGGTGGGAGACTACTGTCTGATAGGAACAAGCAGGCTCCGGATCTGT
ATGACAAAATTTGAGGAAGAGTTGGGGAACAGGCAAGAGAAGGCCAAAGCTGCCCGCCTCCATGGGAGCC
CCCAAAGACAAAGCTGGATGAAGATTTAGAGAGCTCAGTGAGTCTGAATGCGAGACGGACGAGGACAGC
ACCTGCTCAAGCAGCTCGGACTCGGAGGTGTTTCGATGTCATTGCAGAGATTAACGCAAAAAGGCTCACC



[View online »](#)

CTGACCGACTTCATGATGAACTTTGGTACAACGCCAGCCAGCCAGATGAACGACGGACCCTTTGCAAATG
CAGTGCAAAAGCAAGACGCACAGGAATTCGGCACAGCATTTATCCCGGAGAAGAGGCAATCAAGCCCTGT
CGTCTATGACCAACAACGCTGGACGACTTTTCCACTACCGGATTACCGTCTCCCCGCTACCACTTTT
TAACGGACAGGCCAACAGTCATAGAATACGATGATCATGAGTATATCTTTGAAGGATTTTCTATGTTTG
ACATGCCCTCTGACCAATATCCACTGTGTAAGTAATTCGATTCAACATAGACTACACGATTCATTTT
ATTGAAGAGATGATGCCTGAGAATTTTTGTGTGAAAGGACTTGAAGTGTTCATTTGTTCTATTCAGAG
ATATTTGGAGTTATACGACTGGAATCTTAAAGTCTTTGTTTGAAGACAGCCCTCCCTGCTGCCAAG
ATTTCAATTCATGCCACGTTTTGTAAGATTTCTCCAGATGGCGGCAAAGAAGTGTATCAATGCACCAG
ATTCTTCTCTACCTGCTTCGCTGTAGCAAGGCTTTGGTCCCTGAGGAGGAGATTGCCAATATGCTCCAAT
GGGAGGAGCTCGAGTGGCAGAAATATGCGGAAGAGTGCAAAGGCATGATAGTTACCAACCCTGGGACGAA
ACCAAGCTCTGTCCGCATCGATCAACTGGATCGTGAGCAGTTCAACCCTGAAGTATCACTTTTCCGATT
ATCGTTCACTTTGGGATACGCCCTGCACAGTTGAGTTATGCAGGAGACCCACAATACCAAAAATTATGGA
AAAGTTACGTGAACTTCGCCACCTCTTAGCAAATAGTCCCAAGGTCAAACAGACTGACAAAACAGAAGCT
GGCGCAGAGGGAGGAAGCGCTCCAGAAGATACGGCAGAAGAACAATGCGTCGAGAAGTACCGTGGAG
CTGAGTAGCCAAGGATTCTGAAAACCTGGCATTCTGTTCTGATGTCTGTCAGCAGCGGATGATGCTGCCTG
TTCTGACCCATCATACCGATACCATCAATGCTTAATGCACCTGGACAAGTTGATAGGGTATACTTTTCA
GGATCGTTGTCTGCTCCAGCTGGCCATGACTCATCCGAGTCATCATTTAAATTTTGAATGAATCCTGAT
CATGCCAGGAATCTCTGTCTAACTGTGGAATTCGACAGCCAAATATGGAGACAGAAAAGTTTATCACA
TGCACATGCGGAAAAAGGAATTAACACCTAATAAATATCATGTACGCCTCGGCCAAGATGATCCAAC
TCCTTCAAGGATTAATCACAATGAAAGTTGGAGTTCTGGGAGATGCTGTTGTTGAGTTTCTGACCAGT
GTCCACCTGTACTATTTGTTTCTAGCTTGGAGGAAGGAGGCTTGGCAACCTATCGGACAGCCATTGTT
AGAATCAGCACCTCGCCATGCTCGAAAAGAACTTGAAGTGGATCGATTTATGCTGTATGCCATGGGCC
CGACCTATGTAGAGAATCAGACCTCCGGCATGCGATGGCCAATGTTTTCGAAGCATTGATAGGAGCTGTT
TACTTGGAGGGGACCCTGGAGGAAGCCAAACAGTTGTTTGGACGTTACTCTTTAATGATCCGGACCTGA
GAGAAGTCTGGCTCAATTATCTCTCCACCCACTCCAACACTACAAGAGCCAAATACAGATCGACAACCTAT
TGAAAACCTCCCCAGTTCTACAGAACTGACCGAGTTTGAAGAAGCAATGGGGTATCTTCACTCACGTC
CGGCTTCTGGCACGGGCAATCACACTAAGAACTGTGGGCTTTAACACCTGACCCTAGGCCACAATCAGA
GGATGGAATCCTGGGTGACTCCATAATGCAGCTGGTAGCCACGGAGTACTTGTTCATCCACTTCCCCGA
CCACCACGAAGGACACTTGACGTTGTTACGAAGTTCTTTAGTGAACAACAGAACTCAAGCCAAGGTAGCA
GAGGAAGTGGGCATGCAAGAGTATGCCATCACCAACGACAAAACCAAGAGACCCGTGGCCCTAAGAACCA
AGACTTTGGCAGACCTTTTGAATCATTATTGACGCCCTGTACATCGACAAGGACTTGAATACGTCCA
TACTTTTATGAACGTCTGCTTCTTCCACGTCTGAAGGAGTTCATTCTGAACCAGGACTGGAATGACCCC
AAGTCGCAGCTGCAGCAGTGTGCTGACCCCTGAGGACTGAAGGGAAAGAACCAGACATCCCTTGTACA
AGACTCTGCAGACAGTGGGGCCGTCCCACGCTAGAACCTACACGGTGGCCGTTTACTTCAAAGGAGAGAG
GATAGGCTGTGGGAAAGGACCAAGTATTCAGCAGGCCGAAATGGGAGCAGCAATGGACGCACTTGAGAAA
TATAACTTTCCCGATGGCTCATCAGAAGCGTTTATTGAACGGAAATACAGACAAGAGTTAAAGGAAA
TGAGGTGGGAAAGAGAGCATCAGGAGAGAGACCCGGATGAGGCTGAAGACATAAAGAAG

ACGCGTACGCGGCCGCTCGAGCAGAACTCATCTCAGAAGAGGATCTGGCAGCAAATGATATCCTGGATT
ACAAGGATGACGACGATAAGGTTTAA

Protein Sequence: >RR217604 representing NM_001107655
 Red=Cloning site Green=Tags(s)

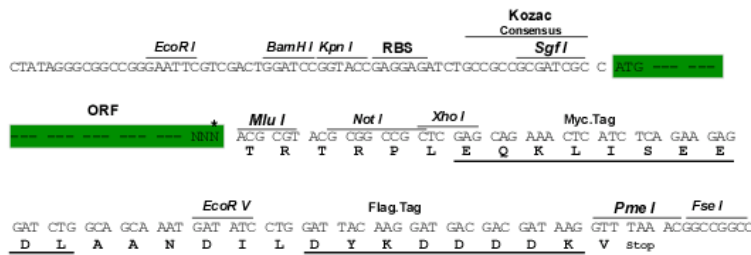
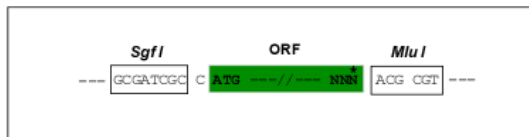
MQGNTCHRMSYHPGRGCPGRGGHGARPSAPTYRPQNLRLHPQQPPAQYQYEPSPASSSSFSNSQAPNF
 MPPRPDFVYPPPVAPSAQGPLPCPVRRPPYPNHQMRHFPVPPCFPPMPPMPCPNPNSVSGAPPQGT
 FPFMVPPSPMPHPPPPVMPQQVNYQYPPGYSHSFPNNSFQNNSSSFPSSANNSTPHFRHLPPYSL
 PKAQSERRSPERLKHYYDHRHRDHSGRGERHRSLERRERGRSPERRRPESTRYRSEYDRGRTPPPRHRSY
 ERSRERERHRHRENRRSPSLERAYKKEYKRSGRSYGLPVTPEPAGCTAELPGEIKNKTDSWAPPQENV
 NHRSPSREKRRARWEEKDRWSDSQSSGKEKSYTSIKEKEPEEAPPEKTEEEDEELLKPWIRCTHSESY
 YSSDPMQVQVDSTVVGTSRLRDLYDKFEELGNRQEKAKAARPPWEPKTKLDEDESSSESECETDEDS
 TCSSSSDSEVFDVIAEIKRKAHPDRLHDELWYNDPGQMNDGPLCKCSAKARRTGIRHSIYPGEEAIKPC
 RPMTNNAAGRLFHYRITVSPPTNFLDTRPTVIEYDDHEYIFEGFSMFAHAPLNIPLCKVIRFNIDYTIHF
 IEEMMPENFCVKGLELFLSLFLFRDILELYDWNKLGPLFEDSPPCCPRFHFMPRFVRFPLDGGKEVLSMHQ
 ILLYLLRCSKALVPEEIANMLQWEELEWQYAECKGMIVTNPGTKPSSVRIDQLDREQFNPEVITFPI
 IVHFGIRPAQLSYAGDPQYQKLWKSIVKLRHLLANSPKVKQTDKQKLAQREEALQKIRQKNTMRREVTVE
 LSSQGFWKTGIRSDVCQHAMMLPVLTHHIRYHQCLMHLDKLIGYTFQDRCLLQLAMTHPSHHLNFGMNP
 HARNLSNCGIRQPKYGDGRKVHMHMRKKGINTLINIMSRLGQDDPTPSRINHNERLEFLGDAVVEFLT
 VHLYLFPSSLEEGGLATYRTAIVQNQHLLAKKLELDRFMLYAHGPDLCRESDLRHAMANCFEALIGAV
 YLEGLTEEAKQLFGRLLFNDDPDLREVWLNYPHPLQLQEPNTDRQLIETSPVLQKLTEFEEAIGVIFTHV
 RLLARAFTLRTVGFNHLTLGHNQRMEFLGDSIMQLVATEYLFIFHPDHHEGHLTLRSSLVNNRTQAKVA
 EELGMQEYAITNDKTRPVALRKTLDLLESFIAALYIDKDLEYVHTFMNVCFPRRLKEFILNQDWNPD
 KSQQLQQCLTLRTEGKEDIPLKTLQTVGSPHARTYTVAVYFKGERIGCGKGPSIQQAEMGAAMDAL
 EKYNFQMAHQKRFIERKYRQELKEMRWEREHQEREPDEAEDIKK

TRTRPLEQKLISEEDLAANDILDYKDDDDKV

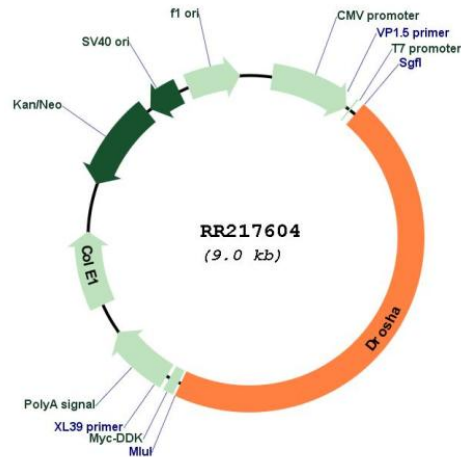
Restriction Sites:
 Cloning Scheme:

Sgfl-MluI

Cloning sites used for ORF Shuttling:



* The last codon before the Stop codon of the ORF

Plasmid Map:


ACCN: NM_001107655

ORF Size: 4119 bp

OTI Disclaimer: The molecular sequence of this clone aligns with the gene accession number as a point of reference only. However, individual transcript sequences of the same gene can differ through naturally occurring variations (e.g. polymorphisms), each with its own valid existence. This clone is substantially in agreement with the reference, but a complete review of all prevailing variants is recommended prior to use. [More info](#)

OTI Annotation: This clone was engineered to express the complete ORF with an expression tag. Expression varies depending on the nature of the gene.

Components: The ORF clone is ion-exchange column purified and shipped in a 2D barcoded Matrix tube containing 10ug of transfection-ready, dried plasmid DNA (reconstitute with 100 ul of water).

Reconstitution Method:

1. Centrifuge at 5,000xg for 5min.
2. Carefully open the tube and add 100ul of sterile water to dissolve the DNA.
3. Close the tube and incubate for 10 minutes at room temperature.
4. Briefly vortex the tube and then do a quick spin (less than 5000xg) to concentrate the liquid at the bottom.
5. Store the suspended plasmid at -20°C. The DNA is stable for at least one year from date of shipping when stored at -20°C.

RefSeq: [NM_001107655.2](#), [NP_001101125.2](#)

RefSeq Size: 4479 bp

RefSeq ORF: 4122 bp

Locus ID: 310159

Cytogenetics: 2q16

MW: 159 kDa