

Product datasheet for **RR217603**

Aatk (NM_001168703) Rat Tagged ORF Clone

Product data:

Product Type: Expression Plasmids
Product Name: Aatk (NM_001168703) Rat Tagged ORF Clone
Tag: Myc-DDK
Symbol: Aatk
Vector: pCMV6-Entry (PS100001)
E. coli Selection: Kanamycin (25 ug/mL)
Cell Selection: Neomycin
ORF Nucleotide Sequence: >RR217603 representing NM_001168703
Red=Cloning site Blue=ORF Green=Tags(s)

TTTTGTAATACGACTCACTATAGGGCGGCCGGGAATTCGTCGACTGGATCCGGTACCGAGGAGATCTGCC
 GCCCGATCGCC

ATGCCCATCGCGCTGCTGGCCCTGGCCATGTCGTGCTCCTTCTCAACCCAGCTTTGCCTTCAGCTCCC
 ACTTCGACCCGGACGGTGCCCGCTCAGTGAGCTATCCTGGTCCCTGCTCCCTGCAGTGGTGTGTGTC
 CTTCTCTGGGATCTTCACTGTCATTGTCTCATGCTGGCCTGCCGTGCTGTAAGAAGGGCGGCATTGGG
 TTCAAGGAGTTTGAAGAATGCTGAAGGGGAAGAGTATGTGGCCGACTTCTCGGAGCAGGGCTCCCGGCTG
 CTAAGTGTACAGAACGGCCCGATGTGTATGTCCTGCCTCTCACTGAGGTCTCCCTGCCCATGGTAAAGCA
 GCCGGTGCCTCAGTGAACCTCAAGTCCACGGACCTGGGCCGCCACAGCCTCCTGTACTTGAAGGAG
 ATTGGCCACGGTTGGTTTGGGAAGGTGTTCTTGGGGGAGGTGCACTCGGGTGTGAGTGGCACGCAGGTGG
 TGGTGAAGGAGCTGAAGGCCAGCGCCAGTGTGCAGGAGCAGATGCAGTTCCTGGAGGAGGCGCAGCCCTA
 CAGGGCCCTGCAGCACAGCAACCTGCTTCAAGTGCCTGGCCAGTGTGCTGAGGTGACCCCTATTTGCTG
 GTTATGGAGTTCTGTCCCTGGGGACCTCAAAGTTATCTACGGAGCTGCCGGTACAGAGTCCATGG
 CGCCTGACCCCTTACCTTGCAGCGCATGGCGTGCAGGTGGCGTGTGGTGTCTTGCATCTACATCGTCA
 CAACTATGTGCACAGTGACCTGGCCCTGAGGAAGTGCCTGCTGACGGCTGACCTGACAGTGAAGTTGGC
 GACTATGGCCTGGCCATTGCAAATACAGGGAAGACTACCTCGTGACGGCCGACCAAGTTGTGGGTGCCGC
 TGCGTTGGATCGCGCCAGAGCTGGTGGATGAGGTGCATGGCAACCTACTGGTGGTGGACCAGACTAAGAC
 CAGCAATGTGTGGTCCCTGGGTGTGACCATCTGGGAGCTTTTCGAGTTGGGCGCGCAGCCCTACCCCAAG
 CACTCGGACCGGCAGGTGCTGGCTTACGCCGTCCGAGAACAGCAACTTAAGTTGCCAAGCCCAAGCTAC
 AGCTGACTCTGTCTGATCGATGGTACGAGGTGATGCAGTTCCTGCTGGCTTCAGCCAGAACAGAGGCTAC
 GGCTGAGGAGGTTCACTGCTGCTGTCTACTTGTGCGCAAGGGCACCAGGAGCTGGAGGAGGAGTTC
 GAGCGCGCTGGCGCTCCCTGCGCCGGGGGCGAGCGGGGCTGGCTCAGTTCACAGTCCCGGCAG
 CTGCCGATCTGAACCTCACTGCTGCTTCACTTTCCCGCTGCTGGAGCAGTTCACCAAGTACAGGCTTCCA
 CGTGGACAGCGACGAGTGTGACAGTCACTGAGACGAGCCACGGCCTCAACTTCGAATACAAGTGGGAG
 GCTGGCTGTGGCGCTGAGGCTTACCCGCCCCAGGCGCTGCTTTTCAGCCAGGTTCCGCGAGGCGCTGC
 AGGAGCTGTGTGACCCGACAGCTCGCCCGGGTGTGGTGGCGTCTCAGTGGCCACAGCCCTCAGT
 GGGTAGCGAGTACTTCATCCGCTGGAGGGGCGAGTGGCGCTGCTGGCCATGACCCAGACTGTGCCGGC



TGTGCTCCAGCCCCAAGCTGTGTCCGAGCAGGACAATAACTCTGAGGAGAGCACCGCTGCATCCCTTG
TCATGGAGCCGCTTCTGGGCCACGCACCACCCACTGGGGCCCTGTGGGGCCCTGCGACCATCATTCTCG
AAGGAGGCAAGAGCCACCCTGCCCTCACGCTCACCCCTCTCTGGGACCCCGATGTTGCCAGCTGAAGAC
ATAGACTGGGGTGTAGCTACCTTCTGCCACCCCTTTTTGATGACCCACTGGGCACATCTCCCTCTGGGA
GTCCTGGGGCCAGCCATCCCCAGTGATGAGGAGCTGGAGGAGGAAAGACTGGGAGGGCTGCTCAGTG
TGGACACTGGAGCTCTAACATGTCTGCCAACAAACAGTGCCAGTCGAGACCCAGAATCCTGGGATCCT
GGCTATGTGAGCAGCTTACAGACAGCTACAGGGACGACTGCTCCAGCTTAGAGCAGACCCCTCGGGCCT
CCCTGAGCTGGGCCATCCCTGTCCAGGAGATTCCAGAGATTTTTACCTGGGCTAGTAGCAGCTTC
CCCTGGCCAGGAGTCAAGCCGTTGCTTCAACCTGCTCCCTCTGTGTCTGCCAAAGGCTGGCACCTGCT
GCTTGCCTCGTCCACCCCTGGACAGAGGACGCTGTAGGTGGGGCTGAGAACCCATTGTGCAACCCA
AACTTGCCAGGAGGCTGAGGGCTGTGTAACCCAGCTACCCCTTCTTCTGTCCCTCCCCATCCCA
CGAAGGAGCTCGCTTCCCTCGGAGGAGCAAGCGCTCCTGACATCCAGCCTGCCTCTCTACACCCGCT
GCTGGCAGCTGGGTGACCGTCCCTGAGCCAGCCCCACCCTGGATAGCAGCAGCAGTTCTCTGGGGCAAG
AGGTACCCAGCAGCGAGGATGAAGACACAACCGAGGTTACGTGAGGAGTCTTACCAGACCTGTCCAGCGA
CGGCCACACACGAGAAGTCAGGCATAGTACCAGCCTTGGCCTGTCTGAGAAGCAGGTGGGGACCCCT
GACTCCCTGGACTCTTTGGACATCCCGTCTCAGCCAGCGATGGCGGCTGTGAGGCTTAAAGCCATCAG
CTGCTGGCCCCGCTGGTGGGCAGCCCCGTGCCATGGACAGTGGCTATGATACAGAGAACTATGAGTCCCC
TGAGTTTGTGCTCAAGGAGGCCATGAGTCAAGTGAGCCTGAGGCCTTTGGGGAGCCAGCCTCAGAGGGT
GAGAGCCAGGGCCGATACTCTGCTCTGTCTCCCTTGGTGACCTCAGCAGAAAGAACCCTACCAGAG
ACTCTGCCTACTTTTTCAGACCTGGATGTGAGTCCGAACCCAACCTTTGGCCCTGAGAAGCACAGTGGGAT
CCAGGACTCCAAAAGGAGCAAGACCTGAGGAGCCACCTAGTCCAGGGCATGAGTCTGTGACGGCTTTT
CCGAGGCTGAGGTGTCCAGCGAGGTGTGCCCCCTCCACAGCAGTCAGAGGAGCCCATGCCAGAAGGCC
CCGGTCCAGGCCTTTGAGGCTCAAGGCCAGTTGAAGTGGAGCCCGTCCAGGCCAAGTCATTCCAA
ATGTCTCCTGTTGACCTCCGCTCCTGAGCTCGGAAGGCAATGGCACGGAGTCCCGGGTCCCCAGGA
CCTGTCAGGGCCAGCCAGACCGGGCGATGGGAATCCTAGCACATCCAGATCCCGCTCTGCCTGG
CCCTGCCTGGCCACCCTGGGACTTCAAGGGACGGCCAGAGGATGACGAGGACACCGAGGACAGTGAAGG
GTCTGACGAGGAGCTCCGGTGTACAGCGTCCAGGAGCCAGTGAAGGACAGTGAAGGAGGACCATCAGCG
GTGCTGTGGTGTGAGGCTGAGAGCCAGAGTGGCCGAATCTACGCAGCCTGCTGAAGATGCCAGCCTGC
TGTCGGAGGCCTTCTGCGACGACCTGGAGCGCAAGAAGAAGGCTGTGTCTTCTTTGATGACGTACCGGT
CTACCTCTTTGACCAGGAGAGCCCCACCCGAGAAGCTGGGGAGCCCTTCCCAGCACGAAGGAGTGTCCC
ACGTTCTGGAGGATAGCCCGGCTCACCCAGTGCCACTGGCGTGCCACTGCGGGCTGGTACTCGCCAG
ACAGCTCTGCTCCGAACCGGGCAGTAGGTTTCAATGGGATGGAGATTTCCCACTGGTGGCCGGCAAGGC
TGCTTTGGTACTGCGCTGGATCCTGCCACCCTGTCTGGCTGCGCCTCCCACGCCAGCTGCACCATTT
TCACGTTTACGGTGTGCCCCGACCTCCCTCCCGCTTTTCCATCACACAAGTATCCGACTCAGATGCC
AGTCCATGGGAGGCCCGGAGCAGATGCTGAGGGCCGATGCACAAAGGCT

ACGCGTACGCGGCCGCTCGAGCAGAACTCATCTCAGAAGAGGATCTGGCAGCAATGATATCCTGGATT
ACAAGGATGACGACGATAAGGTTTAA

Protein Sequence: >RR217603 representing NM_001168703
 Red=Cloning site Green=Tags(s)

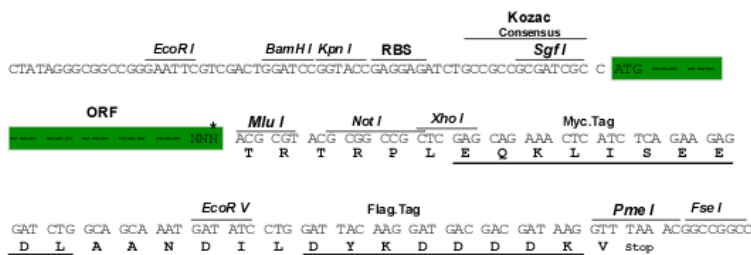
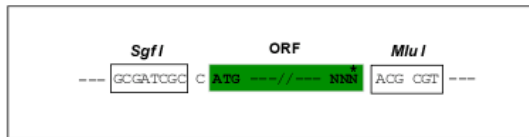
MPIALLALAMSSSFNPSFAFSSHFDPDGAPLSELSWSSSLAVVAVSFGIFTVIIVMLACLCKKGGIG
 FKEFENAEGEEYVADFSEQGSPAATVQNGPDVYVLP L TEVSLPMAKQPGRSVQLLKSTDLGRHSLLYLKE
 IGHGWFGKVFLGEVHSGVSGTQVVVKELKASASVQEQMQL EEAQPYRALQHSNLLQCLAQCAEVTPLYL
 VMEFCPLGDLKGYLRSCRVTESMAPDPLTLQRMACEVACGVLHLHRHNYVHSDLALRNCLLTADLTVKVG
 DYGLAHCKYREDYLV TADQLWVPLRWIAPELVDEVHGNLLVVDQTKTSNVWSLGVTIWELFELGAQYPQ
 HSDRQVLAAYAVREQQLKLPKPLQLTLSDRWYEMQFCWLQPEQRPTAEEVHLLL SYLCAKGTTELEEEF
 ERRWRSLRPGGSAGLGSASTVPAASSELTAASSFPLLEQFTSDGFHVSDSDVLTVTETSHGLNFEYKWE
 AGCGAEAYPPGAAFSPGSAGRLQELCAPDSSPPGVVPLSAHSPSVGSEYFIRLEGAVPAAGHDPDCAG
 CAPSPQAVSEQDNNSEESTAASLVMEPLLGHAPPTGGLWGPCDHHSRRRQEPSPSRSPGTPMLPAED
 IDWGVATFCPPFFDDPLGTSPSGSPAQSPSDEELEEGKTGRAACQGHWSNMSANNSGSRDPESWDP
 GYVSSFTDSYRDDCSSLEQT PRASPELGHPLSQEDSRDFLPGLVAASPGQESSRCFNLLPLCPAKGLAPA
 ACLVPPPWTEAAVGAENPIVEPKLAQEAEGSAEPQLPLSPVSPSHEGASLPSEEASAPDIQPASPTPA
 AGSWVTPEPAPTL DSSSSSLGQEVPSSEDEDTEVTSGVFTDLSSDGPHTKSGIVPALRCLQKQVGT
 DSLDSLIPSSASDGGCEVLSAAGPAGGQPRAMDSDYD TENYESPEFVLKEAHESSEPEAFGEPASEG
 ESPGPDLLSVSLGDL SRKNPYRDSAYFSDLDAESEPNGPEKHSGIQDSQKEQDLRSPSPGHESVQAF
 PRPEVSSEVLPPPQQSEEPMEPEGSEPLEAQGPVEVEPVGPGSHSKCLLLTSAPL SSEGNGTESRPGPG
 PLSGPAQTGRMGNPSTSR SPLCLALPGHPGTSEGRPEDEDTEDESEDEELRCYSVQEPSEDEEEPSA
 VPVVVAESQSARNLRSL LKMP SLLSEAFCDLERKKKAVSFFDDVTYVYLFQESPTREAGEFPFSTKECP
 TFLGSPGSPSATGVPLRAGHSPDSSAPEPGSRFEWDGDFPLVPGKAALVTALDPADPVLAAPPTPAAPF
 SRFTVSPAPPSRF SITQVSDSDAQSMGGPAADAEGRCTKA

TRTRPLEQKLISEEDLAANDILDYKDDDDKV

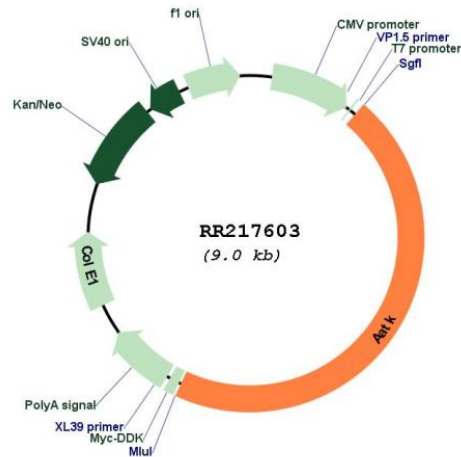
Restriction Sites:
Cloning Scheme:

SgfI-MluI

Cloning sites used for ORF Shuttling:



* The last codon before the Stop codon of the ORF

Plasmid Map:


ACCN: NM_001168703

ORF Size: 4110 bp

OTI Disclaimer: The molecular sequence of this clone aligns with the gene accession number as a point of reference only. However, individual transcript sequences of the same gene can differ through naturally occurring variations (e.g. polymorphisms), each with its own valid existence. This clone is substantially in agreement with the reference, but a complete review of all prevailing variants is recommended prior to use. [More info](#)

OTI Annotation: This clone was engineered to express the complete ORF with an expression tag. Expression varies depending on the nature of the gene.

Components: The ORF clone is ion-exchange column purified and shipped in a 2D barcoded Matrix tube containing 10ug of transfection-ready, dried plasmid DNA (reconstitute with 100 ul of water).

Reconstitution Method:

1. Centrifuge at 5,000xg for 5min.
2. Carefully open the tube and add 100ul of sterile water to dissolve the DNA.
3. Close the tube and incubate for 10 minutes at room temperature.
4. Briefly vortex the tube and then do a quick spin (less than 5000xg) to concentrate the liquid at the bottom.
5. Store the suspended plasmid at -20°C. The DNA is stable for at least one year from date of shipping when stored at -20°C.

RefSeq: [NM_001168703.1](#), [NP_001162174.1](#)

RefSeq Size: 5297 bp

RefSeq ORF: 4113 bp

Locus ID: 690853

Cytogenetics: 10q32.3

MW: 145.5 kDa