

Product datasheet for **RR217602**

Med23 (NM_001277054) Rat Tagged ORF Clone

Product data:

Product Type:	Expression Plasmids
Product Name:	Med23 (NM_001277054) Rat Tagged ORF Clone
Tag:	Myc-DDK
Symbol:	Med23
Synonyms:	Crsp3
Vector:	pCMV6-Entry (PS100001)
E. coli Selection:	Kanamycin (25 ug/mL)
Cell Selection:	Neomycin
ORF Nucleotide Sequence:	>RR217602 representing NM_001277054 Red=Cloning site Blue=ORF Green=Tags(s)

TTTTGTAATACGACTCACTATAGGGCGCCGGAATTCGTCGACTGGATCCGGTACCGAGGAGATCTGCC
GCC**CGATCGCC**

ATGGTACCAATGGAGACGCAACTGCAGAGCATTTTCGAGGAGGTGGTAAAAACAGAAATTATAGAAGAGG
CTTTCCAGGCATGTTTATGGATACCCCGAGGATGAAAAACAAAACCTATTAGCTGTTTGGCAGCCTT
CCGGCAGTTTTGGAATGGACTTTCTCAGGAGTCTCATGAACAGTGTGCCAGTGGATTGTTAAATTTATT
CACGGCCAACATAGCCCGAAAAGGATTTCTTTCTCTATGACTGCTTAGCCATGGCAGTTGAGACTGGTC
TTCTTCCACCCAGGATGGTTTTGGAATCTTTGATAAACTCTGACACTCTTGAATGGGAAAGAACACAGCT
TTGGGCCTTAACATTTAAGCTGGTTCGAAAAATCATTGGAGGAGTGGATTATAAGGGTGTTCGAGACCTC
CTGAAAGTGATTTTGGAGAAAATCTTGACAATCCCGAATACTGTAAGCTCTGCTGTTGTCCAGCAGCTTC
TGGCAGCAAGAGAGGTTATAGCGTATATCTTGGAACGAAATGCCTGCCTGTTGCCAGCCTACTTTGCAGT
CACAGAGATCAGAAAATTATATCCCGAGGGAAAACCTCCACACTGGTTACTAGGAACTTGGTATCAGAC
TTTGTGGATACCTTCAGGCCACAGCGAGGATAAACTCCATTTGTGGCCGTTGCAGTCTTCTGCCAGTTG
TGAACAACCTCGGAGCCATCTGTAACCTCATGAAACTGGACCCTGCAACTCTCCGCTTTCCCTTGAAGG
CCTTTTGCATACGATAAGGATCTGTTTGAACCCAGACTGCTTTGTTGAGATATGTAAGTGGAGCAGCCT
TACTCCAGGGATATGGTCTGCAATATGCTAGGTTTAAACAAGCAGCACAAGCAGCGCTGCCTGTGCTGG
AGGACCAGTTGGTGGACCTGGTGGTGTACGCCATGGAGAGGTCTGAGACCGAGGAGAAGTTTGACGATGG
GGGAACCGCCAGCTCCTGTGGCAGCACCTTCCAGCCAGCTCATTTTCTTTGTGCTTTTCCAGTTTGGC
AGTTTCCACATATGGTTCTGTCTCTCCACCAGAAGTTAGCAGGGCGAGGACTGATTAAGGGCGAGACC
ATCTGATGTGGGTTCTGTGTCAGTTCATCTCGGGAAGTATTCAGAAAAATGCGCTTGCTGACTTCCTCCC
TGTCATGAAGCTCTTTGACCTGCTGTACCCAGAGAAGGAATGTATCCAGTTCCTGATATTAACAAACCA
CAGTCAACACATGCCTTTGCAATGACTTGATTTGGATTATCTTAATAGAAAAGCTCAAATGACAACCT
CCAAGCTGCAGATCCCCATACCCACTCCTGAAGCTGCACCACGAGTTCCTACAGCAGAGTCTGAGAAA
CAAAGTTTGCAGATGAATGACTATAAGATCGCCCTGCTGTGTAATGCGTATTCTACAAATTCAGAGTGT
TTCACCTTACCTATGGGCGCTCTGGTAGAGACCATTTATGGCAATGGAATTATGAGAGTGCCTCTCCCC



[View online »](#)

GGACAAGCTGTCTGGCCTCAGCATCAGTAACTCCCTTACCAATGAACCTCCTGGATTCTCTGACAGTGCA
TGCCAAGATGAGCCTTATTCACAGCATTGCAACCAGAGTGATAAAACTGGCTCATACAAAATCCAGTGTC
GCATTGGCTCCAGCCCTGGTGGAAACTTACAGTCGTTTACTGGTCTACATGGAAATAGAATCTTTGGGCA
TCAAAGGATTTATCAGTCAGCTCCTGCCACTGTCTTCAAGTCCCATGCCTGGGGCATCCTGCACACGCT
GCTGGAGATGTTACGCCACCGGATGCACCACATTACGCCACATTACCGAGTTCAGTCTCTGAGCCATCTC
CACACCCTGGCTGCAGTTGCACAAACCAACCAGAACCAGCTCCATCTGTGCGTAGAAAAGTACTGCGCTGA
GGCTCATACGGCGCTGGGGAGCTCCGAGGTCAGCCGAGTTTACACGCTTCCCTCAACGATCCCAAAC
AGTGCTGTCCGCAGAATCTGAAGAGCTGAACCGAGCCTTGATCCTGACCTTGCCAGAGCAACCCACGTC
ACAGATTTTTTTACAGGATCTGATTCAATACAGGGAACCTGGTGTAAAGATATCCTTCAGACCATCATGA
CTTTTACTCCTCATAACTGGGCTTCGCACACCCTTAGCTGTTTTCCAGCCCTCTGCAGGCATTCTTCAA
GCAAAATAATGTACCTCAGGAAAGCCGTTTTAATCTGAAAAAAACGTTGGAAGAAGGTACAGGAAGTGG
AAGTCAATGACTGATGAAAACGAGATCATACCCAGTTCTCCATGCAAGGCTTCCCTCCGCTCTTCTCT
GTCTCCTCTGGAAAATGCTCCTGGAAACGGATCACATTAGTCAGATTGGGTACAAAGTACTAGAGAGAAT
TGGGGCCAGGGCCTTGGTGGCCACGTGAGAACCTTTCAGATTTCTTGGTGTATGAGTTCTCTACATCA
GCAGGAGTCCAGCAACTCAATAAATGCATTGAGATTCTCAATGACATGGTGTGGAAGTACAACATTGTCA
CACTGGACAGACTAATCTCTGCCTGGCTATGCGTAGTCATGAAGGAAATGAAGCTCAGGTTTGTATTT
CATAATTCAGTTGCTATTGCTAAAACCAATGACTTCCGAAACCGAGTGAGTGACTTTGTGAAGGAGAAC
TCCCCAGAGCACTGGCTGCAGAGCGACTGGCACACCAACACATGAGCTACCACAAGAAATATCCAGAGA
AGTTGACTTTGAAGGCCTGGCAGAACAGGTTGACCCCTCTGTACCAATTCAGTCCCCGTATCTGCCAT
CTACTTTGGAAACGTGTGTCTCCGGTTTTCTCCAGTATTTGATATAGTGATCCACAGGTTTTTAGAGTTG
CTGCCAGTGTCCAAATCACTAGAGACTCCTGGATCACCTAGGGGGCTGTACAAATCCACGACCCGGC
CGGTGACTTACCTGTATAACACTTTACACTATTATGAAATGTGCTGAGAAACCGTGACCATCTCAAACG
AAAACCTCGTCCATGCCATCATTGGCTCCCTCAAAGATAACCGGCCACAGGGCTGGTGTCTCAGTGACACC
TACCTGAAGCATGCTATGAATGCACGGGAGGACAACCCCTGGGTTCCAGAGGACTCCTACTACTGCAAGC
TGATTGGCCGGCTGGTAGACACCATGGCTGGCAAGTCTCCGGGACCCCTCCCAAACGTGACTGGAGATT
CAATGAGTTCCCAACCCCTGCTGCCATGCTCTGCATGTGACGTGTGGAACTCATGGCCTTGGCAGTT
CCAGGCAAAGATGTCGGGAATGCCCTTCTCAATGTTGCTGAAAAGCCAGCCCTTAGTGCCAAGGGAGA
ACATCACAGCATGGATGAATGCAATTGGTCTGATCATCACGGCCCTCCAGAACCATACTGGATTGTGCT
TCATGACCGAATCGTGAGTGAATCAGCAGTCTAGCCTGACGTCAGAGACAGAGTGGGTTGGTTATCCG
TTCCGCTCTTCGACTTACCGCTTGTACCAGTCTACTCTGAGATGAGCTGCAGCTACACGTTAGCGC
TGGCTCACGCCGTGGCACCCTCCAGCATCGGACAGCTCTCGTTATCCCGAAGTTTCTCACTGAAGT
GCTTCTTCCCGTGGTGAAGACTGAATCCAGTTGCTTTACGTGTACCATCTCGTAGGGCCATTTTTACAG
CGATTCCAGCAGGAGAGAACCCGGTGCATGATCGAGATTGGAGTGGCATTATGACATGCTGCTGAATG
TAGACCAGTGCAGCACCCACCTCAATTACATGGACCCATCTGCGACTTCTTATACCATATGAAGTATAT
GTTCACTGGAGACAGTGTGAAGGAGCAGGTAGAGAAGATCATCTGTAATTTAAAGCCAGCTTTGAAGCTT
CGTCTTCGGTTCATCACGCACATCAGCAAGATGGAGCCGGCAGTGCCACCCAGGCCCTCAGCAGCGGGT
CTCCAGCCCTCAGGCCAACAGGTGCCACAGCTCTGCCGTGACTCAG

ACGCGTACGCGGCCGCTCGAGCAGAACTCATCTCAGAAGAGGATCTGGCAGCAAATGATATCCTGGATT
ACAAGGATGACGACGATAAGGTTTAA

Protein Sequence: >RR217602 representing NM_001277054
 Red=Cloning site Green=Tags(s)

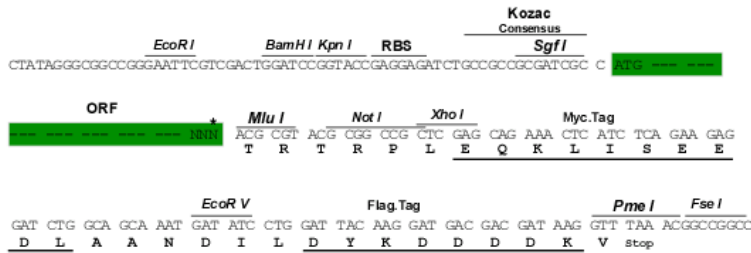
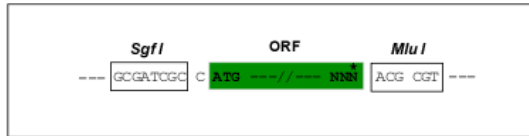
MVPMETQLQSIFEEVVKTEIIIEEAFPGMFMDTPEDEKTKLISCLAARQFWNGLSQESHEQCQVQWIVKFI
 HGQHSPKRISFLYDCLAMAVETGLLPPRMVCELSINSDTLEWERTQLWALTFKLVRKIIGGVYKGVDRDL
 LKVILEKILTIPTNVSSAVVQQLLAAREVIAYILERNACLLPAYFAVTEIRKLYPEGKLPHWLLGNLVSD
 FVDFRPTARINISICGRCSLLPVVNNSGAICNSWKLDPATLRFPLKGLLPYDKDLFEPQTALLRYVLEQP
 YSRDMVCNMLGLNKQHKQRCPVLEDQLVDLVVYAMERSETEEFDDGGTSQLLWQHLSSQLIFFVLFQFA
 SFPHMVLSLHQKLAGRGLIKGRDHLMWVLLQFISGSIQKNALADFLPVMKLFDLLYPEKECIPVPDINKP
 QSTHAFAMTCIWIHLNRKAQNDNSKLQIPIPHSLKLHHEFLQQLSRNKSLQMNDYKIALLCNAYSTNSEC
 FTLPMGALVETIYNGIMRVPLPGTSCLASASVTLPMNLLDSLTVHAKMSLIHSIATRVIKLAHTKSSV
 ALAPALVETYSRLLVYMEIESLGIKGFISQLLPTVFKSHAWGILHTLLEMFSHRMHIIQPHYRVQLLSHL
 HTLAAVAQTNQQLHLCVESTALRLITALGSSEVQPQFTRFLNDPKTVLSAESEELNRALILTLARATHV
 TDDFTGSDSIQGTWCKDILQTIMTFTPHNASHTLSCFPAPLQAFFKQNNVPQESRFNLKKNVEEYRKY
 KSMTDENEIITQFSMQGFPLFLCLLWKMLLETDHISQIGYKVLERIGARALVAHVRTFADFVYEFSTS
 AGGQQLNKCIEILNDMVWYNIIVTLDRILCLAMRSHEGNEAQVCYFIIQLLLLKPNDFRNRVSDFKEN
 SPEHWLQSDWHTKMSYHKYKPEKLYFEGLAEQVDPVPIQSPYLPYFQNVCLRFLPVFDIVIHRLFEL
 LPVSKSLETLLDHLGGLYKFHDRPVTYLYNTLHYEMCLRNDRHLKRKLVAHIIIGSLKDNRPQGWCLSDT
 YLKHAMNAREDNWPVPESSYCKLIGRLVDTMAGKSPGPFNCDFRNEFPNPAHALHVTCELALAV
 PGKDVGNALLNVVLSQPLVPRENITAWMNAIGLIITALPEPYWIVLHDIRVSVISSSSLTSETEWGYP
 FRLDFDTACHQSYSEMSCSYTLALAHAVVHSSIGQLSLIPKFLTEVLLPVVKTEFQLLVYVHLVGPFLQ
 RFQQRTRCMIEIGVAFYDMLLNVDQCSTHLNMDPICDFLYHMKYMTGDSVKEQVEKIIICNLKPAKLL
 RLRFITHISKMEPAVPPQALSSGSPAPQANQVPTALPVTQ

TRTRPLEQKLISEEDLAANDILDYKDDDDKV

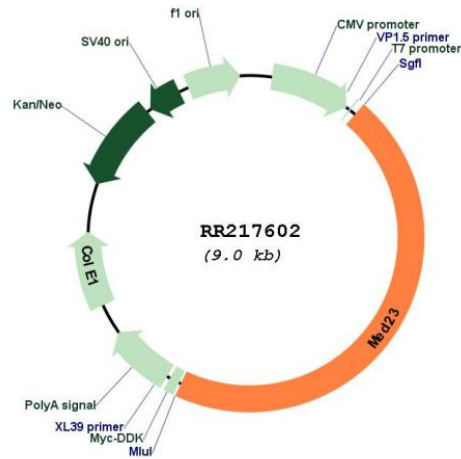
Restriction Sites:
 Cloning Scheme:

Sgfl-MluI

Cloning sites used for ORF Shuttling:



* The last codon before the Stop codon of the ORF

Plasmid Map:


ACCN: NM_001277054

ORF Size: 4110 bp

OTI Disclaimer: The molecular sequence of this clone aligns with the gene accession number as a point of reference only. However, individual transcript sequences of the same gene can differ through naturally occurring variations (e.g. polymorphisms), each with its own valid existence. This clone is substantially in agreement with the reference, but a complete review of all prevailing variants is recommended prior to use. [More info](#)

OTI Annotation: This clone was engineered to express the complete ORF with an expression tag. Expression varies depending on the nature of the gene.

Components: The ORF clone is ion-exchange column purified and shipped in a 2D barcoded Matrix tube containing 10ug of transfection-ready, dried plasmid DNA (reconstitute with 100 ul of water).

Reconstitution Method:

1. Centrifuge at 5,000xg for 5min.
2. Carefully open the tube and add 100ul of sterile water to dissolve the DNA.
3. Close the tube and incubate for 10 minutes at room temperature.
4. Briefly vortex the tube and then do a quick spin (less than 5000xg) to concentrate the liquid at the bottom.
5. Store the suspended plasmid at -20°C. The DNA is stable for at least one year from date of shipping when stored at -20°C.

RefSeq: [NM_001277054.1](#), [NP_001263983.1](#)

RefSeq Size: 4727 bp

RefSeq ORF: 4113 bp

Locus ID: 309565

Cytogenetics: 1p12

MW: 156.6 kDa