

Product datasheet for **RR217599**

Astn2 (NM_001271363) Rat Tagged ORF Clone

Product data:

Product Type: Expression Plasmids
Product Name: Astn2 (NM_001271363) Rat Tagged ORF Clone
Tag: Myc-DDK
Symbol: Astn2
Vector: pCMV6-Entry (PS100001)
E. coli Selection: Kanamycin (25 ug/mL)
Cell Selection: Neomycin
ORF Nucleotide Sequence: >RR217599 representing NM_001271363
Red=Cloning site Blue=ORF Green=Tags(s)

TTTTGTAATACGACTCACTATAGGGCGGCCGGGAATTCGTCGACTGGATCCGGTACCGAGGAGATCTGCC
 GCCCGATCGCC

ATGGCTGCCGCCGGCGCCCGCGCAGCCCGGGCCCGGCTTGGGGCTTCGGGGCGGCCGAGGCTCCGCT
 TCCACCCGGGGCCGCCGCCACCGCCACTGCCGCTGCTGTTGCTGTTTCTGCTCTTGCTGCCGCCGCC
 GCCGTTGCTGGCCGGCGCCACCGCCCGCCGCTCGCGGAGCCGACAGCCCATGCCGCTCAAGACT
 GTCACGGTATCCACGCTGCCCGCTCGCGGAAAAGCGACATCGGCTGGAGCGGTGCCCGCCGGGGCCG
 CGGCCGGGGCTGGGGCCGGGACCGGAGCCGGGGCCGGAGCTTCTGCTGCTGCCGCCGCTGCTGCCGCCG
 GTCCCCGGGCTCCGCGGTTTCAGCCGGTACAGCCGCGGAGTCTCGTCTCCTGCTCTTTGTGCGTAACGAG
 CTCCTGGGCGCATCGCGGTACAAGATGACCTGGACAACACCGAGCTGCCCTTCTCACCTGGAGATGT
 CTGGCACAGCAGCGGACATTTCTGTTGTTCACTGGAGACAGCAGTGGCTGGAGAATGGCACACTGTACTT
 CCATGTTTCCATGAGCAGCTCTGGGCGAGTGGCCAGGCCACTGCTCCACACTGCAGGAGCCCTCAGAA
 ATCGTTGAAGAAGAGCTGCATATCCTCCACATCTCTGTGATGGTGGACTCATTGCACTGCTCCTTTTGC
 TCCTGGTGTTCACAGTGGCATTGTATGCCAACGGCGCTGGCAGAAGCGCAGGCGCATCCCACAGAAGAG
 CGCAAGCACAGAAGCCACTCATGAGATTAACATCCATCTGTGCTGCTCGGTCTCAGGCCAGGGAG
 AGCTTCCGCTCCACCAGACTACAGGCACACAACACTCAGTCACTCGGTGTGCCTATCCGGGAAACCCCATCC
 TAGATGACTATGACTATGAAGAGGAAGAGGACCCACCCAGGCGGGCCAACCATGTCTCCCGTGAGGATGA
 GTTTGATAGCCAGATGACCCATGCCCTGGACAGCTTGGGAAGGCCAGGAGAAGAGAAAGTGGAAATTTGAG
 AAGAAAGCAGCAGCTGAGGCGACACAGGAGACAGTGGAGTCCCTGATGCAGAAGTTCAAGGAGAGTTTCC
 GAGCTAACACACCTGTGGAGATCGGTCAATTGCAGCCAGCCTCGCGCAGCAGCACCTCTGCAGGGAAGAG
 GAAACGGGAGAAACAAGTCTCGAGGGGGAATCAGTTTTGGGAGAACCAAGGAAACATCAGGCTCAGAAGCA
 GATGACGAAACACAGCTGACGTTCTACACAGAGCAGTACCGCAGTCCCGCCGCGCAGAAAGTTTACTGA
 AAAGCCCTGTGAACAAGACAGCCTTAACACTGATTGCTGTGCTCAGCTCCTGCATTTTGGCCATGGTGTG
 CAACCAGATGTCTGTCCACTTACTGTGAAGGTGACTTTGCATGTGCCGAGCACTTCATTGCAGATGGA
 AGCAGCTTTGTGGTGAAGGAAAGCTACCTGGATATCTCTGACTGGCTAAACCCTGCCAAGCTGTCTT
 TGTACTACCAGATCAATGCCACCTACCATGGGTGAGAGACCTCTGTGGACAGAGGACGACAGATGCCTG
 TGAACAGCTTTGTGACCCAGAACTGGGGAGTGCAGTTGTACGAAGGTTACGCCCTGACCCAGTCCAC



[View online »](#)

AGACATCTATGTATCCGAAGTACTGGGGTCAAAGTGAAGGACCTTGGCCTTACACAACACTGGAGAGGG
GTTATGATCTGGTGACAGGAGAGCAAGCCCTGAAAAGATTCTCAGGTCTACTTTTCAGCTTGGGCCAAGG
CCTCTGGCTTCCGGTCAGCAAAAGCTTCGTGGTTCCACCGGTGGAGCTGTCCATCAACCCCTGGCAAGT
TGCAAGACTGATGACTCGTCACAGAAGACCCTGCAGATGTCAGGGAAGAAGCAATGCTGTCCACGTA
TTGAGACCATCAATGACCTGCTCCTCCTTTGGTCCAGTCCGTGACTGCTCAAGGAACAATGGGGCTG
CACCCGCAACTTCAAGTGTGTCTGACCGCCAGGTGGACTCCTCGGGATGTGTGTCTGTGAGGAACTG
AAGCCCATGAAGGATGGTCCGGCTGCTATGATCACTCCAAGGGCATTGACTGCTGTGAGCTTTAATG
GAGGGTGTGAGCAGCTTTGCCTACAACAACAATGCCTTTGCCCTATGATGCCACCTCCAGCACCATCTT
CATGTTCTGCGGCTGTGTGGAGGAGTACAAGCTGGCTCCTGATGGGAAATCCTGTCTAATGCTCTCGGAT
GTCTGTGACGGCCCAAGTGCCTCAAATCTGACTCCAATTTCAATGATACCCTCTTTGGAGAGATGCTAC
ATGTTTACAACAACCGGACACAACATGTAACCAAGGCCAAGTCTTCAAATGACATTGAGGAGAACA
CTTCATCAAGGACTTTCCCGAGTGGCGGATGGACTGTTGGTGTCCCGTACCAGTGGAAAGAGCAATGC
CGAGGGTTCTCTGAGCCCTCCAGACCTCAGTCTCACGGGAGACATCAGGTATGACGAGGCCA
TGGTTACCCCATGGTGCAGCAGTGGCGTGTCCGGAGCAACCTCTATCGTGTGAAGTGTGATACCATCAC
CCTCTCAGCAGGCTTACGAATGCTCTAAAGATCTGACCAAGAGAGCAGTCCGGATGAGCTGCTCCTC
TTCATCCAGCACTATGGCTCCCACTACATTGCAGAGGCTCTGTATGGTTCTGAACTCACTTGCATCATCC
ATTTTCCAGCAAGAAGGTCCAGCAGCAGCTATGGCTCCAGTATCAGAAAAGAGACCAGGAGCTGGGCGAG
CAAGAAGGAGCTCAAGTCCATGCCCTTCACTACCTACCTCTGTGTTACTGACAGCCAGATGCTATCA
GATGACCAACTCATCTCAGGTGTGGAGATTCGATGTGAGGAAAAGGGCCGCTGTCCATCTACCTGTACC
TTTGCCGCGGCCAGGCAAGAACAAGCTGAGCCCCACACCAGTGTGCTGGAGATTAACCGTGTGGTGCC
ACTTTACACCTCATCCAAGACAATGGCACAAGGAGGCCCTTCAAGAATGCACTGATGAGTTCTTACTGG
TGTTCTGGTAAAGGAGATGTGATCGATGACTGGTGCAGGTGTGACCTCAGTGCCTTCGATGCCAGTGGAC
TTCCCAATTGTAGCCCCCTTCCACAGCCGGTGTACGACTTTCTCCAACAGTGGAACTTCCAGCACTGT
GGTTTCCCTGGAGTGGATAGATGTTCCAGCCAGCCATTGGAACCAAGTTTCTGACTATATCTGCAGCAC
AAGAAAAGTGGATGAATACACAGACTGACCTCTACACAGGAGAATTCCTGAGTTTTGCTGATGACTTAC
TCTCTGGCTGGGCACATCTTGTGTAGCTGCTGGTCAAGCCACGGAGAGGTCCCGGAAGTCAATCTA
CTCGGTGATCTTCAAGTGCCTGGAGCCAGATGGCCTTTACAAGTTCACCTGTATGCCGTGGATACTCGA
GGGAGGCACTCAGAGCTCAGCACAGTACTCTAAGAACAGCTTGTCCACTGGTAGATGACAACAAGCAG
AAGAGATAGCTGACAAGATTTACAATCTATAAATGGTTACACCAGTGGCAAGGAACAGCAGACTGCTTA
CAACACACTGATGGAAGTCTCTGCCTCCATGCTCTTCCGAGTCCAGCACCCTACAACCTCACTATGAA
AAGTTTGGTATTTCGTCTGGAGGAGTGGAGTGGAGTGGAGTGGAGTGGAGTGGAGTGGAGTGGAGTGGAG
GGCTGGAGAGGGTCCAGCAGCCATTGTTCTAGTCTTGTGAAAGCCCTACATCCAGAGTCTGTGGATAC
CATAACCTATCTTCTGCGCAGTGGAGGAGTCCGGCCTGCAGGAATGGTGTGGTACAGCATCCTCAAA
GACACCAAAATCACATGTGAGGAGAAGTGGTGTCCATGGCCGAAACACGTATGGGGAACCAAGGCC
GG

ACGCGTACGCGGCCGCTCGAGCAGAACTCATCTCAGAAGAGGATCTGGCAGCAATGATATCCTGGATT
ACAAGGATGACGACGATAAGGTTTAA

Protein Sequence: >RR217599 representing NM_001271363
 Red=Cloning site Green=Tags(s)

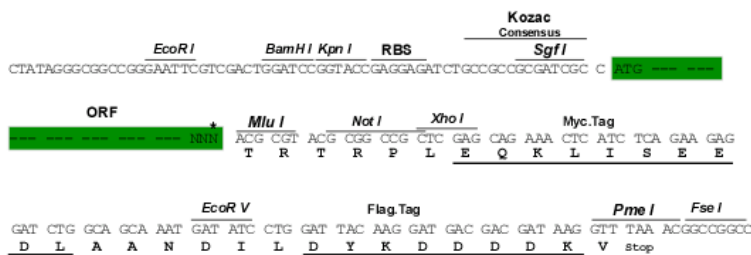
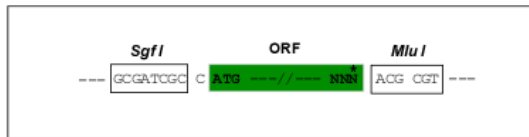
MAAAGARRSPGGLGLRGRPRFRHFGPPPPPLPLLLLFLLLLPPPLLAGATAAAASREPDSPCRLKT
 VTVSTLPALRESDIGWSGARAGAAAGAGAGTGAGAGASAAAAAASPGSAGSAGTAAESRLLL FVRNE
 LPGRIAVQDDLNTLPPFFTLEMSGTAADISLVHWRQQWLENGTLYFHVSMSSGQLAQATAPTLQEPSE
 IVEEQLHILHISVMGGLIALLLLLLFTVALYAQRWRQKRRRIPQKSASTEATHEIHYIPSVLLGPQARE
 SFRSTRLQAHNSVIGVPIRETPILDDYDYEEDPPRRANHVSREDEFDSQMTHALDSLGRPGEEKVEFE
 KKAAAEATQETVESLMQKFESFRANTPVEIGQLQPASRSSTSAGKRKRNRKSRGGISFGRTKGTSGSEA
 DDETQLTFYTEQYRSTRRSKGLLKSPVNTALTLIAVSSCILAMVCGNQMSCPLTVKVTLVHPEHFIADG
 SSFVVEGSLYDISDWNPAKLSLYYQINATSPWVRDLGQRTTDAEQLCDPETGECSCHEGYADPVH
 RHL CIRSDWQSEGPPWYTTLEGRYDLVTGEQAPEKILRSTFSLGQGLWLPVSKSFVVPVVELSINPLAS
 CKTDVLVTEDPADVREEAMLSTYFETINDLLSSFGPVRDCSRNNGGCTRNFKCVSDRQVDSSGCVCEPEL
 KPMKDGSGCYDHSKIDCSDGFNGGCEQLCLQQTMPPLPYDATSSTIFMFCGCVVEYKLAPDGKSCMLSD
 VCDGPKCLKSDSKFNDFLFGEMLHGYNRRTQHVNRQGVQMTFRENNF IKDFPQLADGLLVIPLVVEEQC
 RGVLSLEPLDQLLTGDIRYDEAMGYPMVQWRVRSNL YRVKLSITLSAGFTNVLKILTKESSRDELLS
 FIQHYGSHYIAEALYGSELTCTIHFPSKKVQQQLWLQYQKTELGSKKELKSMFITYLSGLLTAQMLS
 DDQLISGVEIRCEEKGRCPSTCHLCRRPGKEQLSPTPVLEINRVVPLYTLIQDNGTKEAFKNALMSSYW
 CSGKGDVIDDWCRCDLSAFDASGLPNCSPLPQPVRLSPTVEPSSTVVSLWIDVQPAIGTKVSDYILQH
 KKVDEYTDLDLTYGFLSFADLLSGLGTSCVAAGRSHGEVPEVSIYSVIFKCLEPDGLYKFTLYAVDTR
 GRHSELSTVTLRTACPLVDDNKAEEIADKIYNLYNGYTSKGEQQTAYNTLMEVSASMLFRVQHHYNHYE
 KFGDFVWRSEDELGPRKAHLILRRLERVSSHCSLLRSAYIQSRVDTIPYLCRSEEV RPAGMVWYSILK
 DTKITCEEKVMVSMARNTYGETKGR

TRTRPLEQKLISEEDLAANDILDYKDDDDKV

Restriction Sites:
Cloning Scheme:

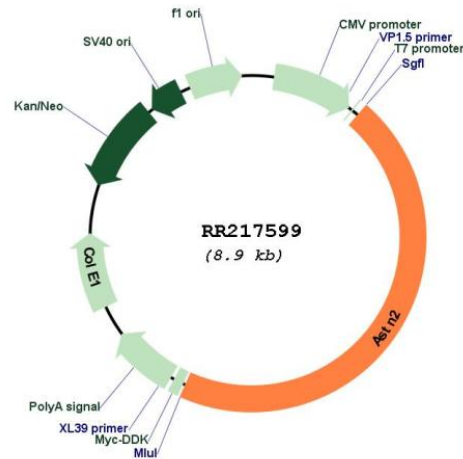
SgfI-MluI

Cloning sites used for ORF Shuttling:



* The last codon before the Stop codon of the ORF

Plasmid Map:



ACCN: NM_001271363

ORF Size: 4062 bp

OTI Disclaimer: The molecular sequence of this clone aligns with the gene accession number as a point of reference only. However, individual transcript sequences of the same gene can differ through naturally occurring variations (e.g. polymorphisms), each with its own valid existence. This clone is substantially in agreement with the reference, but a complete review of all prevailing variants is recommended prior to use. [More info](#)

OTI Annotation: This clone was engineered to express the complete ORF with an expression tag. Expression varies depending on the nature of the gene.

Components: The ORF clone is ion-exchange column purified and shipped in a 2D barcoded Matrix tube containing 10ug of transfection-ready, dried plasmid DNA (reconstitute with 100 ul of water).

Reconstitution Method:

1. Centrifuge at 5,000xg for 5min.
2. Carefully open the tube and add 100ul of sterile water to dissolve the DNA.
3. Close the tube and incubate for 10 minutes at room temperature.
4. Briefly vortex the tube and then do a quick spin (less than 5000xg) to concentrate the liquid at the bottom.
5. Store the suspended plasmid at -20°C. The DNA is stable for at least one year from date of shipping when stored at -20°C.

RefSeq: [NM_001271363.1](#), [NP_001258292.1](#)

RefSeq Size: 4229 bp

RefSeq ORF: 4065 bp

Locus ID: 100361323

Cytogenetics: 5q24

MW: 149.6 kDa