

Product datasheet for RR217598

Mink1 (NM_001271136) Rat Tagged ORF Clone

Product data:

Product Type: Expression Plasmids
Product Name: Mink1 (NM_001271136) Rat Tagged ORF Clone
Tag: Myc-DDK
Symbol: Mink1
Synonyms: MEKKK 6
Vector: pCMV6-Entry (PS100001)
E. coli Selection: Kanamycin (25 ug/mL)
Cell Selection: Neomycin
ORF Nucleotide Sequence: >RR217598 representing NM_001271136
Red=Cloning site Blue=ORF Green=Tags(s)

TTTTGTAATACGACTCACTATAGGGCGCCGGGAATTCGTCGACTGGATCCGGTACCGAGGAGATCTGCC
GCCCGATCGCC

ATGGGCGACCCAGCCCCGCCGAAGCTTGGACGACATCGACCTGTCTGCCCTGAGGGACCCTGCAGGAA
TCTTTGAGCTGGTGGAGGTGGTTGGCAATGGAACCTATGGACAGGTGTACAAGGGGCGGCACGTC AAGAC
TGGGCAGCTGGCTGCCATTAAGGTCATGGATGTCACAGAGGATGAGGAGGAAGAAATCAAACAGGAAATC
AACATGTTAAAGAAGTACTCTCACCATCGCAATATTGCCACCTACTACGGGGCCTTCATCAAGAAGAGCC
CTCCTGGGAACGATGACCAGCTCTGGCTGGTGTGGAGTTCTGTGGTGGCTCAGTGACCAGCTGGT
AAAGAACACGAAAGGAAACGCGCTGAAAGAGGATTGCATTGCGTACATCTGCAGGGAGATTCTCAGGGGT
CTTGCCCATCTCCATGCCACAAGGTGATCCACCAGAGATCAAGGGACAAAATGTGCTGCTGACAGAGA
ATGCTGAAGTCAAGCTAGTGGACTTTGGGGTGAAGTGTTCAGCTGGACCGCACTGTGGGGAGGCGGAACAC
TTTCATTGGGACCCATACTGGATGGCTCCAGAAGTCATTGCCTGTGACGAGAACCCCGATGCCACCTAT
GACTACAGGAGTGACATTTGGTCTCTAGGAATCACAGCCATTGAAATGGCAGAGGGAGCCCGCTCTGT
GTGACATGCACCCATGCGGGCTCTTCCTCATCCCTCGAACCCCTCCCCAGGCTCAAAGTCAAAGAA
ATGGTCTAAGAAGTTCACCTGACTTCATTGACACGTGTCTCATCAAGACTTACCTGAGCCACCAACA
GAACAGTTACTCAAATCCCCTTCATCCGAGACCAGCCCACGGAGCGGCAGGTCCGCATCCAGCTCAAGG
ACCAATTGACCCTCCCGAAGAAGCGGGGGAGAAAGAGGAGACAGAGTATGAGTACAGTGGCAGTGA
AGAGGAAGACGACAGCCATGGAGAGGAAGGCGAGCCAAGTTCATCATGAATGTGCCTGGGGAGTCCACA
CTCCGCCGAGAATTCTCAGACTCCAACAGGAGAATAAGAGCAACTCAGAGGCTTTAAAGCAGCAGCAGC
AGCTGCAGCAGCAGCAGCAGCGGACCTGAGGCACACATCAAACACCTGCTGCACCAGCGGCAGCGTGC
CATAGAGGAGCAGAAGGAGGAGCGGCGACGTGTAGAGGAGCAACAGCGGCGAGAGCGAGAACAGCGCAAG
CTGCAGGAGAAGGAGCAGCAGCGGGTGGGAAGACATGCAAGCCCTTCGTCGAGAGGAAGAGAGCGGC
AAGCAGAGCGGGAACAGGAATACAAGCGGAAGCAGCTGGAGGAGCAGCGGAGTCCGAGGCGCTCCAGAG
ACAGCTGCAGCAGGAGCATGCCTACCTCAAGTCCCTGCAGCAGCAGCAGCAACAGCAGCAGCAGCTCCAG
AAACAACAGCAGCAGCAGCAGCAGCAGCAGCAGCAGCAGCAGCAGCAGATCCTACCTGGAGACAGGA



AACCCCTGTATCATTATGGTCGGGGCATTAACTCTGCTGACAAGCCAGCATGGGCCCGAGAGGTGGAAGA
GAGAGCTCGGATGAACAAGCAGCAGAAGCTCCCTTGGCCAAGACAAAGCCAAGCAGTGCGGGGCCAGAG
CCCCCATTCCCCAGGCCTCTCTAGCCCCCAGGACCTCTTCCCAAACCTCCTCTATGCAGAGGCCTG
TGGAGCCTCAGGAAGGACCACACAAGAGCCTGGTGGCACACCGGGTCCCCTGAAGCCATATGCAGCACC
TGTACCCCGATCCAGTCCCTGCAGGACCAACCCACTCGAAACTTGGCTGCCTTCCCAGCCTCCCACGAC
CAGACCCACCTCTGAAGGGCCTGGGCCTAGCCCTAACCTCCATCCTGGGTCCGGCCTGATAATGAAGC
TCCACCCAAGGTTCCCTCAGAGGACCTCGTCTATTGCCACTGCCCTAACACCAGTGGGGCTGGAGGGTCC
CGGCCAGCTCAGGCTGTCCGTGCCAGACCTCGCAGCAACTCCGCCTGGCAAATCTATCTGCAGAGGCGGG
CAGAGCGAGGCACCCCCAAGCCTCCTGGGCCCCAGCTCAGCCCCCTGGCCCCCAACACCTCTAGTAA
CCCTGACCTCAGGAGGAGTGACCCTGGCTGGGAGCGTTCAGACAGTGTCTCCCTGCCTCCCACGGCCAC
CTCCCTCAGGCCGGCTCCTTGGAGCGGAACCGAAACCGTGTGGGAGCCTCCAAAACTGGACAGCTCCC
CAGTGCTCTCCCTGGGAACAAGCCAAGCCTGAAGACCACCGCTCAAGGCCAGGCCGGCCCCGAAGCTA
TAAGCGAGCGATTGGTGAGGATTTCTGTGTGCTCAAAGAGCGGACTCTGGATGAGGCCCTAAGCCTCCC
AAGAAGGCCATGGACTATTCCTCATCCAGTGAGGAGGTGGAGAGCAGTGAAGATGAGGAGGAGGAAGGCG
ATGGGGAGCCATCAGAGGGGAGCAGAGACTCCCGGGGGCCGTGATGGTGACACAGATAGCGTCAGCAC
CATGGTGGTTCATGATGTTGAAGAGGTATCCGGGACCCAGCCTTCATATGGAGGAGGCACCATGGTGGTC
CAGCGTACTCCTGAAGAGGAGCGAAGCCTGCTGCTTGCTGATAGCAATGGCTACACAAACCTGCCAGATG
TGGTCCAGCCCAGCCACTCACCTACTGAGAACAGCCAAGGTCAAAGCCCTCCAACAAAGGATGGAGGCGG
TGATTACCAGTCTCGTGGGCTGGTAAAGGCCCCAGGAAAGAGTTCATTACCATGTTTGTGGATCTAGGG
ATCTACCAGCCTGGAGGCAGTGGGGATACCATCCCCATCACAGCCCTAGTGGGCGGAGAGGGTGGTCGCC
TTGATCAACTGCAGTTCGATGTGAGGAAGGGCTCTGTGGTCAACGTCAATCCCACCAACTCGAGCTCA
TAGTGAAACTCCCGAGATTCGCAAGTACAAGAAGCGATTCAATCCGAGATCCTCTGTGCAGCCCTGTGG
GGGTCAACCTCCTAGTGGGCACAGAGAATGGGCTGATGTTGCTGGACCGAAGTGGGCAGGGCAAGTGT
ATGGACTTATTGGGCGACGACGCTTCCAGCAAATGGATGTTCTGGAAGGGCTCAACCTGCTCATCCCAT
CTCAGGAAAAAGGAACAACTGCGGGTATATTACCTGTCTGGCTTCGGAATAAGATTCTACACAATGAC
CCAGAGGTGGAAGAAGCAGGGGTGGACCACCGTGGGGGACATGGAGGGCTGCGGCCACTATCGTGTTG
TGAATATGAACGAATTAAGTTCCTGGTCATTGCTCTGAAGAACTCTGTGGAGGTGTATGCCTGGGCCCC
TAAACCCTACCACAAATTCATGGCCTTCAAGTCTTTGCTGACCTCCCTACCGCCCTGCTGGTGGAC
CTGACAGTAGAGGAGGGCCAGCGCTCAAGGTCATCTATGGCTCCAGTGTGGCTTCCATGCTGTGGATG
TTGACTCTGGGAACAGCTATGACATCTACATCCCTGTACATATCCAGAGCCAAATCACACCCACGCCAT
CGTCTTTCTCCCAACACTGACGGCATGGAGATGCTGCTTTGCTATGAAGATGAGGGTGTCTACGTCAAC
ACTTACGGGCGGATCATCAAGGACGTGGTGTGCAAGTGGGGAGAGATGCCACCTCTGTCGCTACATCT
GCTCCAACAGATAATGGGCTGGGGTGAGAAGGCCATAGAGATCCGCTCTGTGGAGACAGGCCACCTAGA
TGGGGTCTTATGCACAAACGAGCCCAGAGGCTCAAGTTCCTGTGTGAGCGGAATGATAAGGTGTTTTT
GCCTCAGTCCGCTCTGGAGGAAGCAGCCAAGTTTACTTTATGACTCTGAACCGTAACTGCATCATGAACT
GG

ACGCGTACGCGGCCGCTCGAGCAGAACTCATCTCAGAAGAGGATCTGGCAGCAAATGATATCCTGGATT
ACAAGGATGACGACGATAAGGTTTAA

Protein Sequence: >RR217598 representing NM_001271136
 Red=Cloning site Green=Tags(s)

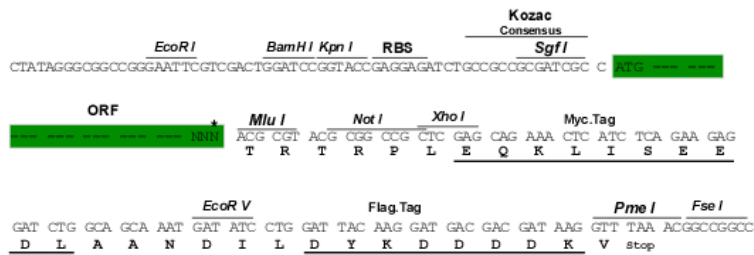
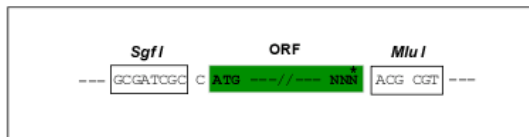
MGDPAPARSLDDIDL SALRDPAGIFELVEVVNGTYGQVYKGRHVKTGQLAAIKVMDVTEDEEEEIKQEI
 NMLKKYSHHRNIATYYGAFIKKSPGNDQLWL VMEFCGAGSVTDLVKNTKGNALKEDCIAYICREILRG
 LAHLHAHKVIHRDIKQNVLL TENAEVKLVDFGVSAQLDRTVGRNFTIGTPYWMAPEVIACDENPDATY
 DYRSDIWSLGITAIEMAEGAPPLCDMHPMRALFLIPRNPPLKSKKWSKFTDFIDTCLIKTYLSRPPT
 EQLLKFPFIRDQPTERQVRIQLKDHIDRSRKKRGEKEETEYEGSEEDDSHGEEGEPSSIMNVPGEST
 LRREFLRLQQENKSNSEALKQQQQQLQQQQQORDPEAHIKHLLHQRRRIEEQEERRRVEEQRREREQRK
 LQEKEQQRLEDLQALRREEERRQAEREQEYKRKQLEEQRQSERLQRQLQEHAYLKSLLQQQQQQQQQLQ
 KQQQQQQQQQQQQQQQLPGDRKPLHYHGRGINPADKPAWAREVEERARMNKQNSPLAKTKPSSAGPE
 PPIPPQASPPGGLSQTTPMQRPVEPQEGPHKSLVAHRVPLKPYAAPVPRSQSLDQPTRNLAAFPASHD
 PDPAAVPTPTATPSARGAVIRQNSDPTSEGPGSPNPPSWVRPDNEAPPKVPQRTSSIATALNTSGAGGS
 RPAQAVRARPRNSAWQIYLQRAERGTPKPPGPPAQP GPPNTSSNPDLRRSDPGWERSDVL PASHGH
 LPQAGSLERNRNVGASTKLDSSPVLSPGNKAKPEDHRSRGRPA SYKRAIGEDFVLLKERTLDEAPKPP
 KKAMDYSSSSEEVESSEDEEEEGDGEPEGSRDTPGGRDGD TDSVSTMVVDVVEE VSGTQPSYGGTMMV
 QRTPEEERSLLLADSNGYTNLPD VVQPSHPTENSQGGSPPTKDG GGDYQSRGLVKAPGKSSFTMFVDLG
 IYQPGSGDIPITALVGGEGRLDQLQFDVRKGSVVNVPNTN TRAHSETPEIRKYKRFNSEILCAALW
 GVNLLVGTENGLMLLDRSQGK VYGLIGRRRFQ QMDVLEGLNLLITISGKRNLRVYYLSWLRNKILHND
 PEVEKKQGWTTVGDMEGCGHYRVVYKRIKFLVIALKNSVEVYAWAPKPYHKFMFAKSFADLPHRPLLDV
 LTVEEQRLKVIYSSAGFHAVD VDSGNSYDIYIPVHIQSQITPHAI VFLPNTDGMELL CYEDEGVYVN
 TYGRIKDVVLQW GEMPTSVAYICSNQIMGWGEKAIEIRSVETGHL DGVFMHKRAQR LKFLCERNDKVFF
 ASVRSGGSSQVYFMTLNRNCIMNW

TRTRPLEQKLISEEDLAANDILDYKDDDDKV

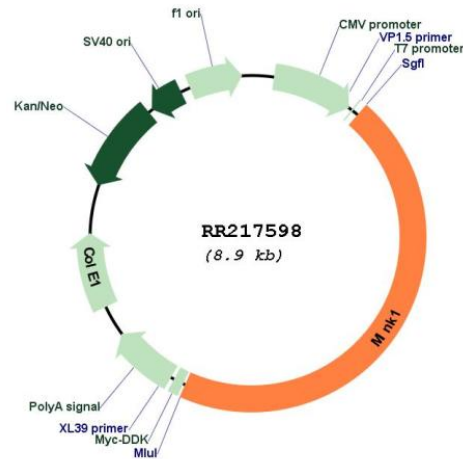
Restriction Sites:
 Cloning Scheme:

Sgfl-MluI

Cloning sites used for ORF Shuttling:



* The last codon before the Stop codon of the ORF

Plasmid Map:


ACCN: NM_001271136

ORF Size: 4062 bp

OTI Disclaimer: The molecular sequence of this clone aligns with the gene accession number as a point of reference only. However, individual transcript sequences of the same gene can differ through naturally occurring variations (e.g. polymorphisms), each with its own valid existence. This clone is substantially in agreement with the reference, but a complete review of all prevailing variants is recommended prior to use. [More info](#)

OTI Annotation: This clone was engineered to express the complete ORF with an expression tag. Expression varies depending on the nature of the gene.

Components: The ORF clone is ion-exchange column purified and shipped in a 2D barcoded Matrix tube containing 10ug of transfection-ready, dried plasmid DNA (reconstitute with 100 ul of water).

Reconstitution Method:

1. Centrifuge at 5,000xg for 5min.
2. Carefully open the tube and add 100ul of sterile water to dissolve the DNA.
3. Close the tube and incubate for 10 minutes at room temperature.
4. Briefly vortex the tube and then do a quick spin (less than 5000xg) to concentrate the liquid at the bottom.
5. Store the suspended plasmid at -20°C. The DNA is stable for at least one year from date of shipping when stored at -20°C.

RefSeq: [NM_001271136.1](#), [NP_001258065.1](#)

RefSeq Size: 5008 bp

RefSeq ORF: 4065 bp

Locus ID: 303259

Cytogenetics: 10q24

MW: 152.5 kDa