

Product datasheet for RR217592

Pcdh11x (NM_001271228) Rat Tagged ORF Clone

Product data:

Product Type:	Expression Plasmids
Product Name:	Pcdh11x (NM_001271228) Rat Tagged ORF Clone
Tag:	Myc-DDK
Symbol:	Pcdh11x
Synonyms:	RGD1562864
Vector:	pCMV6-Entry (PS100001)
E. coli Selection:	Kanamycin (25 ug/mL)
Cell Selection:	Neomycin
ORF Nucleotide Sequence:	>RR217592 representing NM_001271228 Red=Cloning site Blue=ORF Green=Tags(s)

TTTTGTAATACGACTCACTATAGGGCGGCCGGAATTCGTCGACTGGATCCGGTACCGAGGAGATCTGCC
GCC**CGGATCGCC**

ATGGACTTGTGTCCGGGACGTATATATTTGCGGTCTGTAGCATGCGTCGTGTTTCAGTCTGGCGCC
AGGAGAAGAATTATACAGTCCGAGAAGAAATGCCAGAAAACGTCCTGATAGGCGACTTGTGAAAGACCT
CAACTTGTGCTTATCCCGACAAGTCCCTAACCCAGCCTATGCAATTCAAATTAGTTTACAAAACCGGG
GATGTACCATTGATTCCGATTGAAGAGGGTACTGGCGAGATCTTCACTACTGGCGCAGCATTGATCGTG
AGAAATTATGTGCTGGAATCGTGTGGATGCTCGTTGCTTTTACGAAGTGGAGGTTGCTGTTTTGCCGGA
TGAAATATTTAGATTGGTTAAGATACGCTTTCTGATAGAAGACATAAATGATAATGCACCGTTATTTCCCG
ACAACGTGCATCAACATATCAATTCCAGAAAACCGGCTATAAATCTCGATATTCTCTCCGGCAGCCA
TTGATCCTGACATTGGAATAAATGGAGTCCAAAATACCAACTAATTAAGAGTCAAAATGTTTTCCGGTCT
TGATGTCGTTGAAACACCAGAAGGAGAAAAGATGCCCCAGCTGATCGTTCAAAGGAATTAGATAGAGAA
GAAAAGGATACCTATGTGATGAAAGTAAAAGTTGAAGATGGTGGCTTTCCTCAAAGATCCAGTACAGCTA
TTTTGCAAGTAAAGTGTGCTGATACAAACGACAACCGCCCAATCTCATAGAGAAGGAAATGAAGTCAG
TATACCAGAAAATGCTCCTATAGGTTCTTCAAGTACACAACCTCCATGCCACAGATGCTGATATAGGTGAA
AACGCCAGAATCACTTTTATTTAGCAATCTAGTCTCCAATAACGCTAAGAGACTGTTTCATCTTAACA
CCACTACCGGGCTTATCACTGTCAAAGAACCCTGGATAGGGAAGAATCACCAAGCCACAAGTTATTGGT
TTTGGCAACTGATGGTGGATCGACACCAGCAAAGCAATGGTGGTAAATGTTACAGATATCAATGAT
AATGTACCATCAATTGACATAAGATACATCGTCAATCCAACCAATGGCACTGTGCTCTTTCAGAGAATG
CTCCGCTTAACACTAAAATGCTCTCATAACTGTGACGGATAAGGATTCTGAACATAATGGTAGGGTGAC
ATGCTTACAGATCATGAAGTTCCTTTCAGATTACGTCCAGTATTCAGTAATCAGTTTCTCTGGAGACA
GCTGCATTTCTGACTTTGAGTCCACCAGAGAATATGCCATTAATTAAGTGGCCGCTGATGCTGGCAAAC
CTCCTTTGAATCAGTCATCCATGCTCCTGATCAAAGTAAAAGATGAAAATGACAATGCTCCGGTTTTAC
CCAATCTTTCATAAGCCTTTCGGTTCCTGAGAATAACTCTCCTGGTGCACAGTTGACAAAATCAGTGCA
ACAGATGCAGACAGTGGACGCAATGCTGAAATAAACTACCTGCTAGGTTTTGATGCACCACCTGAATTCA



[View online >](#)

ACCTGGATCGTCGTACAGGCATCCTGACTGCAGTGAAGAACTAGATAGAGAAAAACAGGAAAAGTATTA
CTTTACAGTCCTGGCACAGGACAATGGAATTCACCCCTAATGTCCAATGCCACTGTGTTCTGACTGTT
CTTGACCAGAATGATAACAGCCCAATTTTCACTCATAATGAATATAAATTCTATGTTCTGAAAACCTTC
CAAAACATGGCACAGTAGGGCTAATAACTGTGACTGATCCTGATTATGGGGAGAATTCTGCAGTTACTCT
CTCTGTCTTAGATGTAACGATCAATTCCTACTATTGATCCACAGTCTGGTGTATCAGGCCAAATATTTCA
TTTGACAGAGAAAAACAAGAATCCTATACTTTCTATGTAAGCTGAGGATGGTGGTAGGGTATCACGTT
CTTCAACTGTAAAGTAACCATAAATGTGGTTGACGTAATGATAACAAACCAATTTTTATTGACCCTCC
TTCCAATTACTCCTTTGAATGGGTTCTACCATCCACAGATCCTGGCACAGTCATCTTCAAGGTTCTTGCA
ATTGACAATGATACTGGCATGAATGCAGAGCTTCGTTACAGCATTGTTGGAGAAAACACAAAAGGACTGT
TTATGATTGAACAAATATCAGGCAACATCACATTGAAGGAGAAGTGCATGGTTTCAGATATTGGTTTACA
TCGAGTCATAGTCAAGGCTAAAGATTTAGGACAACCTGATTCTCTTCAATGTTGTAATGTCAATCTC
TTTGTAATGAGTCTGTGCCAATACTACCCTGATTTATGAAATGGTGCGCAAAAGCATTGACTCACCTG
CAAATCAAATTTGAAACAACAAGTGCATCCTCACCAACCACCGACTATGTCAAGATCATGGTTGCCAT
TGTTGCTGGCACCATAACTGTTGCTAGTTATTTTCATCACTGTGTAGTAAGATGCCCAATCACCA
CACCTTAAGGCTTCTCAGAAAAACAACAGAATCTGAGTGGGTTACTCAAACCCAGAAAAACAGACAGA
TGATCATGATGAAGAAGAAGAAGAAGAAAAAGAAGCATCCCCCAAGAACCTGCTGCTTAATTTTGT
TAGTATTGAAGAAGCAAAGCCAGATGATGCTGACAATGAGAGAAAACAGTGTACACTAGATCTTCTTATT
GAGCTGGAGGATCAAACCATGGGCAATACAACCTGGGCACTACACCTACTACCTTCAAGCCCGATAGCC
CTGATTTGGCTCGACACTACAACTCTGCCTCTCCCCAGCTGCATTCCAGATCCAGCCTGAAACACCCCT
AAACTCAAAGCACCACATCATTCAAGGCTTCTCTTGATAATACCTTCGTTGGGTGTGATTCCATCTCC
AAGTGTCTCTCCAGCAGTCTGTATCCCTACAGTGTTCGAGTGCAGCTATCCAGTGACAACCTTCAAGA
CTCCTGTGTCTGTGCATACCAGACCTCCAATGAAGGAAGTCGTACGATCTCACACACCTATGAAAGAGGC
AACAACTGTGAAATCTGGACTCATCCGCACCCACAGCGGAGATCTGATGGAAAAAGGCAGGAAAGTCC
CAGAGACGTGTTACATTTACCTACCAGAAGGCTCTCAGGAAAGCATCAGTGATGGTGGATTGGGAGACC
ATGATCCAGGCAGCCTTCCCAGTACATCCCATGCACTGCCACTTGCTATCCACAGGAAGAGTATTTTGA
TCATGCTGCACAAAACAACCGCACTGAAGGGGATGGCAACTCTGATCCTGAATCTACTTTTATTCTGGA
CTAAAGAAAGCTGCAGAAATAACAGTGCAGCAACTGTGGAAAGAAGCCTCTGACACCTGCACTCAAGAAT
GCCTCATCTGGGCCACTCTGACTCCTGCTGGATGCCAGCTTCGCTGACCAATCTACTCCTTACAGAT
AAAGACTTCTGCTATCTGCCACAGTCCACCCAGGACCCATTATCAGTTCGTGCTGCAGCCCTCCAGT
ACACAGACTGTTGCTATCTGCCACAGTCTCCTGTGACCCAGGCTATTGCCCTGTGCCACAGCCCTCCAC
CAGTACAGGCTACCGTACTCCGTATAGCTCACCACCAGCACAGGCTCTGCAGTCTGCTACAGCCCAAC
TCTGGTACAGGCTGTGGTAATTCACCGCAGTCTCCTCTGCCACAGGCTGCCACACTCCGTACACTCAG
GCAACAACCACCAATGGGTTTACAGCAAGGATGGGTGCAGGGTGCAGGAGCAGATGGAACACATCCTATTG
ATCAGGGAGTACAGGAGTACGAGAGCTCAGTTTTACACCATGGCTGAAAGACTTATCCAGATGATGA
CTCAATTAAGTCAATCCTTTGACCACCTTACTTCAAGTAAACAGGCCAGAGCCTCAAGAGGTGATTCT
CCCATCATGGAGGAACATCCCTTG

ACGCGTACGCGGCGCTCGAGCAGAACTCATCTCAGAAGAGGATCTGGCAGCAATGATATCCTGGATT
ACAAGGATGACGACGATAAGGTTTAA

Protein Sequence: >RR217592 representing NM_001271228
 Red=Cloning site Green=Tags(s)

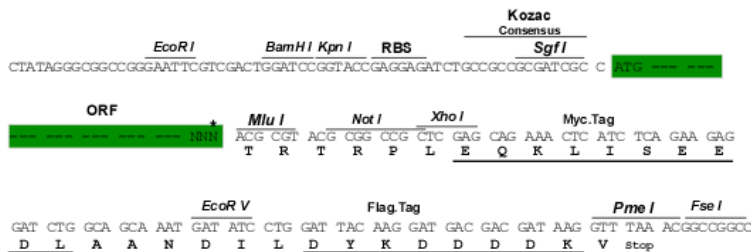
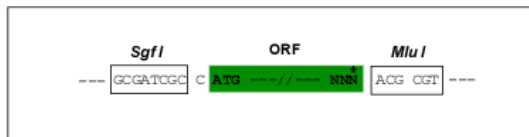
MDLLSGTYIFAVLLACVVFQSGAQEKNYTVREEMPENVLIGDLLKDLNLSLIPDKSLTTPMQFKLVYKTG
 DVPLIRIEEGTGEIFTTGARIDREKLCAGIVLDARCFYEVEVAVLPDEIFRLVKIRFLIEDINDNAPLFP
 TTVINISIPENSAINRYSYLPAAIDPDIGINGVQNYQLIKSQNVFGLDVVETPEGEKMPQLIVQKELDRE
 EKDTYVMKVKVEDGGFPQRSSTAILQVSVADTNDNRPIFIEKEIEVSIPENAPIGSSVTQLHATDADIGE
 NARIHFYFNLVSNNAKRLFHLNNTTGLITVKEPLDREESPSHKLLVLATDGGSTPAKAMVLVNVTDIND
 NVPSIDIRYIVNPTNGTVLLSENAPLNTKIALITVTDKDEHNGRVTCFTDHEVPFRLRPVFSNQFLLLET
 AAFDFESTREYAIKLLAADAGKPLNQSSMLLIKVKDENDNAPVFTQSFISLSPENNSPGAQLTKISA
 TDADSGRNAEINYLGLFDAPPEFNLDRRTGILTAVKKLDREKQEKYFTVLAQDNGIPPLMSNATVFVTV
 LDQNDNSPIFTHNEYNFYVPENLPKHGTVGLITVTDPDYGENSAVTLVLDVNDQFTIDPQSGVIRPNIS
 FDREKQESYTFYVKAEDGGRVSRSTAKVTINVVDVNDNKPIFIDPPSNYSFEWVLPSTDPGTVIFKVL
 IDNDTGMNAELRYSIVGGNTKGLFMIEQISGNITLKEKCMVSDIGLHRVIVKAKDLGQPDLSFNVVNVNL
 FVNESVPNTLLIYEMVRKSIDSPANQNSETTSASSPTTDYVKIMVAIVAGTITVVLVIFITAVVRCRQSP
 HLKASQKNKQNSEWVTPNPENRQIMMKKKKKKKKHPKNLLLNFVSIIEAKPDDADNERNVTLDLPI
 ELEDQTMGKYNWGTPTTTFKPDSPDLARHYKSASPQAFQIQPETPLNSKHIIQELPLDNTFVGCDSIS
 KCSSSSSDPYSVSECSYPVTTFKTPVSVHTRPPMKEVVRSHTPMKEATTVEIWHPHQRRSDGKKAGKS
 QRRVTFHLPESQESISDGGGLGDHDPGSLPSTSHALPLGYPQEEYFDHAAPNNRTEGDGNSDPESTFIPG
 LKKA AEITVQPTVEEASDTCTQECLILGHSDSCWMPASL TNTPSQIKTSAICHSPRTHSSVRRCSPPV
 TQTVAICHSPPVQAIALCHSPPPQATVLRHSSPPAQA SAVCYSP TLVQAVVIHRSPPLQAATLRHTQ
 AQPMMGLQQGWVQAGADGTHPIDQGVQGSTRAQFYTMAERLHPDDDSIKVIPLTFTTSGKQARASRGDS
 PIMEEHPL

TRTRPLEQKLISEEDLAANDILDYKDDDDKV

Restriction Sites:
Cloning Scheme:

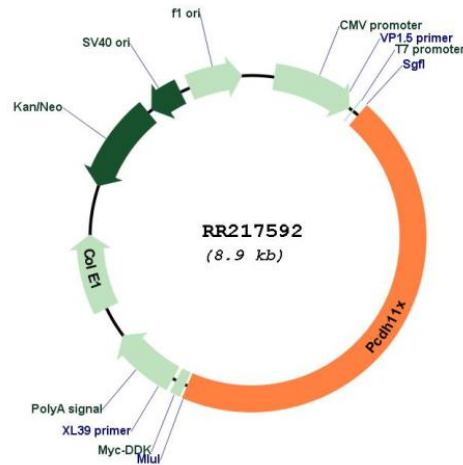
SgfI-MluI

Cloning sites used for ORF Shuttling:



* The last codon before the Stop codon of the ORF

Plasmid Map:



ACCN: NM_001271228

ORF Size: 4014 bp

OTI Disclaimer: The molecular sequence of this clone aligns with the gene accession number as a point of reference only. However, individual transcript sequences of the same gene can differ through naturally occurring variations (e.g. polymorphisms), each with its own valid existence. This clone is substantially in agreement with the reference, but a complete review of all prevailing variants is recommended prior to use. [More info](#)

OTI Annotation: This clone was engineered to express the complete ORF with an expression tag. Expression varies depending on the nature of the gene.

Components: The ORF clone is ion-exchange column purified and shipped in a 2D barcoded Matrix tube containing 10ug of transfection-ready, dried plasmid DNA (reconstitute with 100 ul of water).

Reconstitution Method:

1. Centrifuge at 5,000xg for 5min.
2. Carefully open the tube and add 100ul of sterile water to dissolve the DNA.
3. Close the tube and incubate for 10 minutes at room temperature.
4. Briefly vortex the tube and then do a quick spin (less than 5000xg) to concentrate the liquid at the bottom.
5. Store the suspended plasmid at -20°C. The DNA is stable for at least one year from date of shipping when stored at -20°C.

RefSeq: [NM_001271228.1](#), [NP_001258157.1](#)

RefSeq Size: 4385 bp

RefSeq ORF: 4017 bp

Locus ID: 317204

Cytogenetics: Xq31

MW: 147.2 kDa