

Product datasheet for **RR217534**

Tyk2 (NM_001257347) Rat Tagged ORF Clone

Product data:

Product Type: Expression Plasmids
Product Name: Tyk2 (NM_001257347) Rat Tagged ORF Clone
Tag: Myc-DDK
Symbol: Tyk2
Vector: pCMV6-Entry (PS100001)
E. coli Selection: Kanamycin (25 ug/mL)
Cell Selection: Neomycin
ORF Nucleotide Sequence: >RR217534 representing NM_001257347
Red=Cloning site Blue=ORF Green=Tags(s)

TTTTGTAATACGACTCACTATAGGGCGGCCGGAATTCGTCGACTGGATCCGGTACCGAGGAGATCTGCC
GCC**CGATCGCC**

ATGGTGACAAGCATGCCTCTGTGTGGGCGGAGAGCCGCTCGGAAGACAGCAAGGCAGATGGCACAGAAG
CTCAGCCCCCTGGTGCCACAGGACGGTTGATGGTGCTGCTGCACTGGCCCCGGCCTGAGGGCGGGAGCC
CTGGGTACCTTCAGCCAGCCATCTGACTGCAGAGGAGATGTGCATCCACATCGCACACAAGTCCGGC
ATCACTCCACCCTGCCTGAATCTCTTCGACTCTACGATGCACAGGCCAAGGTCTGGCTGCCCCAAACC
ACGTTCTGGACACATCCCAAGACGCAACCTGAGGCTCTATTTTCGAATGAGTTTTACTCCGGAAGT
GCATGGCATGAATCCCCAAGAGCCTGCTGTATACCGATGTGGTTCCAGGGGCAGAGACTTCTCAGAC
CATGCAGAGCAAGGTGTACAGCTCTGGACTCTGCCTCATTTGAATACCTTTTTGAGCAGGGAAAACATG
AATTCATGAACGATGTGGTATCTCTGCGGGACCTGTCTAGCGAGGAAGAGATCCACCCTTTAAGAATGA
GAGCCTGGGCATGGCCTTTCTGCACCTCTGCCATCTTGCTCTCAACCGTGGCGTCCCCCTGGAGGAGATG
GCCAGAGAGATCAGCTTCAAGAAGTGTATCCCTCACTCCTCCGTCAGCACATCCGCCAGCACAAATGTGC
TTACGCGCCTGCGTCTCCGCAGAGTCTCCGCCGCTTCTGCAGGCCCTCCAGCCTGGCCACCTCTCCCA
ACAGGTTGTGATGGTTAAGTACTTGGCCACCCTGGAGCGGCTGGCTCCTCGTTTTGGCTCAGAGCACATA
CCTGTGTGTCATCTGGAAGTTCTGGCCAGCCTGAGAGGGACCCCTGCTACATCCAGAACAGTGGGAGCA
CCACTGGGGACCCAGGCCAGAGCTGGCTTCTGGGCCAGCCACCCATGAGGTACTGGTGACAGGCACCGG
AGGTATCCAGTGGCGTCCACTACAGACCCAGGACTCTGAGAGAGGTACACAGCAGAGGGAATCCCCAAGGC
AGCCAGTCTGGGAAGAAACCCAGGCCCTGAGTCTGGAGAGCACCTGGCAGGGAGTCCCCAGGAACCCAC
CTTGGACCTACTTCTGTGACTTCCAGGACATTTCCCATGTGGTACTAAAGGAGCGTGCAGTGCACATCCA
CCTTCAAGACAACAAGTGCTTGTGCTGTGCCTCTGCTCCAGGCCGAGGCCCTGTCTTTGTGGCCCTG
GTGCATGGCTATTTCCGTTGACTGTGACTCCAGCCACTACCTGTGCCATGAGGTAGCACCCCGAGGC
TGGTGACTAGCATCCAGAATGGCATCCACGGGCCCTGATGGACCCATTTGTACAGGCTAAGCTGTGGCC
AGAGGATGGCCTTACCTGATCCAGTGGAGCACCCACCTGCACCGACTGATCCTCACCGTAGCCCAT
CGAAACCCGGCTTCCAGAAACGGCCCTAGGGCCCTACGCCTCCGAAAGTTCCCCATCACCCAGCAGCCTG
GAGCCTTTGTGCTTGTGGTTGGGGCCGCTCCTTTGACAGCTTGGGGACCTTCGGCAGGCCCTGCAGGG
CTGCTCATTGCGAGCTGGTGTGACTGTTTCCGTTGCACCACTGCTGCCTGCCCGACCAAGAGAAATC



[View online »](#)

TCCAACCTTGTCATCATGCGGGGTCTAGGGCCACACCCGGCCACTCAACCTCAGTCAGCTTAGCTTCC
 ACAGGGTTCACCAGGATGAAATCACCCAGCTGTCCCACTTGGGCCAAGGCACAAGGACCAATGTGTATGA
 GGGCTGCTAAGTGTGGGAGGCCCAATGAGGGCAAAGTGAGCAGTGGATGCCCTCTGGGCTGATAGG
 GGCAGTGGGCAGCAGCTTCGAGTGGTGTCAAAGTCTCGACCCTAGTCACCATGATATCGCCTTGGCT
 TCTATGAGACTGCCAGCCTCATGAGCCAGGTGTACACATGCACCTGGCTTCTGCATGGTGTCTGCGT
 GCGTGGCTCAGAGAATATCATTGTAGCGGAATTCGTAGAGCACGGTCCCCTGGATGTGTGGTTACGGAGA
 CAGAGAGCCGAGTGCCATGCCCTGGAAGATGGTCGTGGCTCAGCAGCTGGCCAGCCGCTAGCTACC
 TGGAGGACAAGAATCTGGTTCACGGGAACGTATGTGGCCGAACATCCTGCTGGCCGCCTGGGGCTGGA
 GGAGGGTACCAACCCCTTCATCAAGCTCAGTGACCCTGGCGTGGGCCAAGGCGCCCTCTCCAGGGAAGAG
 CGGGTGGAGCGAATCCCCTGGACAGCTCCGGAGTGCCTGTCCGGAGGGGCCAACAGCTTGGGCACTGCCA
 CGGACATGTGGGGCTTGGTGCCACCCTCCTTGAGATCTGTTTTGATGGAGAGGCACCTCTGCAGGGCCG
 TGGTCCCTCCGAGAAAGAACGGTCTACACAAAGAAACATCAGCTGCCAGAGCCCTATGCCCGAGCTG
 GCCACACTCACCCGTAGTGCCTGAGCTATGAACCCGCACAGAGGCCATCGTTCGCACCATTTTGGCGG
 ACCTCACAAAGACTGCAGCCACAGAATCTAGTGGGAACCTCGACTGTGAACCTGGACTCACCAGCATCGGA
 CCCCACCGTTTTTACAAGCGTTACTTGAAAAGGATCCGGGATTTGGGTGAGGGTCACTTTGGCAAGGTC
 AGCCTGTACTGCTATGACCCGAACAATGACGGCACTGGCGAGATGGTGGCTGTGAAAGCCCTGAAGGAGG
 GATGTGGTCCCCAGCTCCGCTCAGGCTGGCAGCGGGAGATCGAAATCCTTCGGACGCTGTACCACGAGCA
 CATTGTCAAGTACAAAGGCTGCTGTGAAGACCAAGGGGAGAAGTCTGTACAGCTGGTGTGGAATACGTC
 CCTCTGGGCGACCTCCGAGACTACCTGCCAAGGCACAGCGTGGGGCTGGCTCAGCTCCTGTTGTTTGCC
 AGCAGATCTGCGAGGGCATGGCTTACCTGCACGCTCAGCACTACATTACCGAGACCTCGCTGCGCGAAA
 CGTGCTGCTGGACAACGACCGGCTGGTCAAGATTGGAGACTTTGGCTAGCCAAGGCTGTACCTGAAGGC
 CACGAGTACTACCGAGTGCAGGACGGGACAGCCAGTATTCTGGTATGCCCAAGTGCCTAAAGG
 AGTGAAGTTTTACTATGCATCTGATGTCTGGTCTTGGGCTGACCCCTTATGAGCTGTGACACTGTG
 TGACTCTAGCCAGAGTCCCCACGAAATTCATCGAGCTCATCGGCGTAACCCAGGGCCAGATGACTGTG
 CTGAGGCTCACAGAGTCTGGAGCGAGGGGAGAGGCTGCCGCGCCTGACAGATGTCCCTGTGAGATCT
 ATCACCTCATGAAGAAGTCTGGGAGTCAAGGCTCCTTCCGGCCACGTTCCAGAATCTGTGCCAT
 CCTAAGACAGCACAGGAGAAGTACCAAGGCCAGGTGCCTTCAGTGTTCAGCGTGTGC

ACGCGTACGCGGGCCGCTCGAGCAGAAACTCATCTCAGAAGAGGATCTGGCAGCAATGATATCCTGGATT
 ACAAGGATGACGACGATAAGGTTTAA

Protein Sequence:

>RR217534 representing NM_001257347
 Red=Cloning site Green=Tags(s)

MVTSMPLCGRRAASEDSKADGTEAQPLVPTGRLMVLHWPPEGGEPWVTFSQPSLTAEMCIHIAHKVG
 ITPPCLNLFALYDAQAVVLPNNHVLDTSQDRLRLYFRMRFYFRNWHGMNPQEPAVYRCGFPGAETSSD
 HAEQGVQLLDSASFEYLFEQKHEFMNDVVSLRDLSEEEIHHFKNESLGMFLHLCHLALNRGVPLEEM
 AREISFKNCIPHSFRQHIRQHNVLTRLRLRRVFRFLQAFQPGHLSQQVVMVKYLATLERLAPRFGEHI
 PVCHLEVLAQPERDPCYIQNSGTTGDPPELASGPATHEVLVTGTGGIQRPLQTQDSERGHSRGNPQG
 SQSGKKPKAPESGEHLGASPPWYFCDFQDISHVVLKERRVHIHLQDNKCLLLCLCSQAEALSFVAL
 VDGYFRLTADSSHLYLCHVAPPRLVTSIQNGIHGPLMDPFVQAKLWPEGLYLQWSTSHLHRLILTVAH
 RNPASRNGPRGLRLKFPITQQPGAFVLDGWRGFSDSLGLRQALQGCSLRAGDDCFPLHHCCLPRPREI
 SNLVIMRGSRAHTRPLNLSQSFHRVHQDEITQLSHLGGQTRTNVYEGLLSVGGPNEGKVDSGCPSGPDR
 GSGQQLRVVLLKVLDP SHHDIALAFYETASLMSQVSHMHLAFLHGVCVRGSENIIVAEFVEHGLDVLRR
 QRGRVPMWKMVVAQQLASALSYLEDKNLVHGNVCGRNILLARLLEEGTNPFIKLSDPGVGQALSREE
 RVERIPWTAPECLSGGANSLGTATDMWGFATLLEICFDGEAPLQGRGPEKERFYTKKHLPEPSCPEL
 ATLTRQCLSYEPAQRPSFRTILRDLTRLQPQNLVGTSTVNSDSPASDPTVFHKRYLKRIRDLGEGHFQV
 SLYCYDPNNDGTGEMVAVKALKEGCPQLRSGWQREIEILRTRYHEHIVKYKCCEDQGEKVSQVMEYV
 PLGSLRDYLP RHSVGLAQLLLFAQQICEGMAYLHAQHYIHRDLAARNVLLDNDRLVKIGDFGLAKAVPEG
 HEYYRVREDGDSPVFWYAPECLKECKFYASDVWSFGVTLYELLTYCDSSQSPPTKFIELIGVTQGMQTV
 LRLTELLERGERLPRPDRCPCEIYHLMKNCWSEASFRPTFQNLVPIKTAQEKYQGQVPSVFSVC

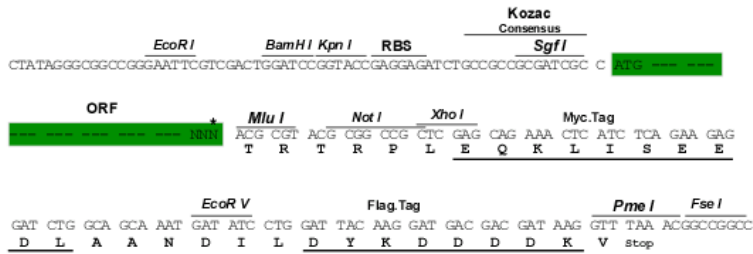
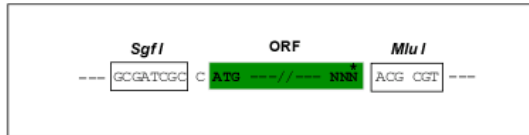
TRTRPLEQKLI SEEDLAANDILDYKDDDDKV

Restriction Sites:

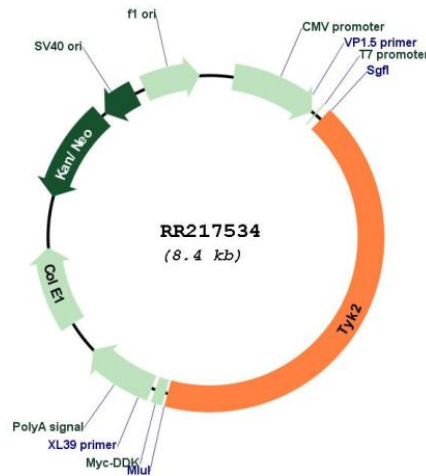
Sgfl-MluI

Cloning Scheme:

Cloning sites used for ORF Shuttling:



* The last codon before the Stop codon of the ORF

Plasmid Map:


ACCN: NM_001257347

ORF Size: 3558 bp

OTI Disclaimer: The molecular sequence of this clone aligns with the gene accession number as a point of reference only. However, individual transcript sequences of the same gene can differ through naturally occurring variations (e.g. polymorphisms), each with its own valid existence. This clone is substantially in agreement with the reference, but a complete review of all prevailing variants is recommended prior to use. [More info](#)

OTI Annotation: This clone was engineered to express the complete ORF with an expression tag. Expression varies depending on the nature of the gene.

Components: The ORF clone is ion-exchange column purified and shipped in a 2D barcoded Matrix tube containing 10ug of transfection-ready, dried plasmid DNA (reconstitute with 100 ul of water).

Reconstitution Method:

1. Centrifuge at 5,000xg for 5min.
2. Carefully open the tube and add 100ul of sterile water to dissolve the DNA.
3. Close the tube and incubate for 10 minutes at room temperature.
4. Briefly vortex the tube and then do a quick spin (less than 5000xg) to concentrate the liquid at the bottom.
5. Store the suspended plasmid at -20°C. The DNA is stable for at least one year from date of shipping when stored at -20°C.

RefSeq: [NM_001257347.1](#), [NP_001244276.1](#)

RefSeq Size: 4535 bp

RefSeq ORF: 3561 bp

Locus ID: 100361294

Cytogenetics: 8q13

MW: 133.3 kDa