

Product datasheet for RR217527

Pcdh12 (NM_053944) Rat Tagged ORF Clone

Product data:

Product Type:	Expression Plasmids
Product Name:	Pcdh12 (NM_053944) Rat Tagged ORF Clone
Tag:	Myc-DDK
Symbol:	Pcdh12
Vector:	pCMV6-Entry (PS100001)
E. coli Selection:	Kanamycin (25 ug/mL)
Cell Selection:	Neomycin
ORF Nucleotide Sequence:	>RR217527 representing NM_053944 Red=Cloning site Blue=ORF Green=Tags(s)

TTTTGTAATACGACTCACTATAGGGCGGCCGGAATTCGTCGACTGGATCCGGTACCGAGGAGATCTGCC
GCCCGATCGCC

ATGCTACTTCTGCCTTCTCTGCTAGGGCTCTTAGGACCAGGAAGCTACTTGTTTCATTTAGGGGCTTGTC
AGGAGGTGGCCACTGTCACGGTGAATTCGAAGTGGCAGAGGAAGTGCCATCTGGCACCGTGATAGGGAA
ACTGTCCCAAGAACCAGGAGTGGAGGAGGCGTGGGAAGGCAGGAGATGCCTTTCAGATTTGTCAGCTG
CCTCAGGCACTGCCGATTAGATGAACTCTGAGGATGGCCTGCTCAACACTTCCAGCCGGCTGGATCGGG
AGAAGCTCTGTCGGCAGCAAGATCCCTGCCTGGTGTCTTTGATGTGCTTCCACAGGGGCTTCTGCTCT
AATTCATGTGGAGATTCAGGTGCTGGACATCAATGACCACCAGCCTCAGTTTCCAAAGATGAGCAGGAG
CTGGAAATCTCTGAGAGTCTTCTCTGCACACACGAATCCCTTGGACAGAGCTTTGACCAAGACACTG
GCCCTAACAGCTTATATTCCTATTCCTGTCTCCAGTGAACACTTTGCCCTGGATGTTATTGTGGGCC
TGATGAGACCAACACGCAGAACTTGTGGTGGTGAAGGAGTTGGACAGGGAAGTCCACTCATTTTTGAT
CTGGTGTGACTGCCTATGACAATGGGAATCCCCCAAGTCAGGTACCAGCGTGGTCAAGGTCAATGTCC
TAGATTCCAATGACAATAGCCCAGTGTGCTGAGAGTTCACTAGCACTAGAAATCCCAGAAGACTGTC
CCCTGGTACTCTTCTATAAACCTGACTGCTACGGATCCAGACCAAGGCCCAATGGGGAGGTAGAATTC
TTCTTTGGCAAGCATGTGTCCTCCAGAGGTGATGAATACCTTTGGTATAGATGCTAAGACAGGCCAGATCG
TTCTGCTCCAACCCTAGACTACGAGAAAAACCCTGCCTATGAGGTGGATGTCCAGGCAAGGGACTTAGG
TCCCAATTCCATCCCAGGCCATTGCAAAGTTCTCATCAAAGTTCTGGATGTCAATGACAACGCCCAAGC
ATCCACATCACGTGGGCTCCCAGATGTCGCTGGTGTGAGAAGATCTCCAGGGACAGCTTCATTGCTC
TTGTCACTGCGAATGACTTGGACTCAGGAAACAATGGTCTAGTCAACTGTTGGCTGAATCAAGAGCTAGG
TCATTTAGACTGAAAAGGACTAATGGCAACACGTACATGCTGCTCACCAGTCCCATGCTGGACAGAGAG
CAATGCCCCACATACACTCTCACTGTGTTTCCCAAGACCAAGGCCCCAGGCCTTATCAGCTGAGAAGG
AGCTCCAGATTCAGGTCACTGATGTCAATGACAATGCCCTGTATTTGAGAAGAGCCGGTATGAGGTCTC
CACTTGGGAAAAACAACCCCTCTCTTCACTTATCACGCTCAAAGCTCATGATGCTGACTTGGGCAGT
AATGGAAGTGTGATACCGTATCAAGGACTCCCTGTTTCTCACTTAGTCATTATTGACTCTGAAACAG
GAGAAGTCACTGCTCAGAGGTGCTGGACTATGAAGAGATGGCAGGCTTTGAGTCCAGGTGATAGCAGA
GGACAGAGGGCAACCCAGCTCTCATCCAGCATCTCGGTGTGGTTAGCCTTTGGATGCCAACGACAAT



[View online »](#)

ACCCAGAAAGTATTAGCCTGCGCTCAGTGAAGGCAAAGCCACCCTTTCAGTGCTTGTAAATGCCTCCA
 CGGGCCACCTTCTGTTGCCATTGAGAGCCCCAGTGGCATGGATCCAGCAGGTAAGTGGTCCAAACACCACC
 AAAGGCTACCCACAGCCCTGGTCTTCTTTTGGTGACAATCGTGGCAAGGGATGCAGACTCGGGGGCC
 AATGGGAACTCCTTTACAGCATTCAAAGTGGGAATGATGCTCATCTCTTTGCTCAGCCCTTCCCTGG
 GGCAGCTATTCAATATGTCACCAATGCCAGCAGCCTCATCGGGAGTCAATGGGACCTAGGCATAGTGGT
 AGAGGACCAGGGGAGCCCTCCTTGACAGCCCAAGTTTCACTGAAGGTCGTGTTTGTACCAGCATGGAC
 CACCTAAGGGACTCTGCTCAGGACCCGGAATTCGAGCACACCAGCGCTGGCTATGATCTGCTGCTG
 TACTGCTGGCCGCTTTGGATTGATCTTGGCTTTGCTTGTATCCATCTGCCGGATAGAGAAAAGGGATAA
 TAGGGCCTACAAGTGTGCGGAAGCTGAGTCTATGTACCGCCACCAGCCCAAGAGGCCAGAAAACATT
 CAGAAGGCAGATATCCACCTGGTGCCTATGCTTAGGGCCAGGAGGATGAGGCTGAGGAAGTTAGGCCAC
 CTCACAAGGATACCAGTAAAGAGACATTGATGGAGGCAGGTTGGGACTCTGCCTACAGGCCCTTCCA
 CCTCACACCAACCCTATACCGACCTGCGTAACCAAGGCAACCAGGGAGCACTGGCAGAGAGCCAGGAG
 GTACTGCAGGACACCTTCAACTTTCTTCAACCACCCAGGCAGAGGAATGCCTCCGAGAGAACCTCA
 ACCTTCTGAGTCCCACCCACCCTACGCCAGCCACTCTAAAGCCTCTGAAGTGCCTGGCAGCCCAT
 AGCGAGGGTACTGGAGACCAAGGCAGCAAGGAGGCACCAGAGCCACCAGCGTCTCTGCAACCCTA
 AGACGACAGAGGAATCTCAATGGCAAAGTGTCTCTAAAGGCGAGTCCAGTCTCATCAGATTCTCAGGA
 GCCTGGTTCGACTCTCTGTAGTGTCTTTGCGAACGGAACCCTGTGGAGGAGCTTGTGGGACTCTCC
 TCTGTTCAGCAAATCTCCAGCTGCTGTCTTGTCTGCATCAGGGCAATTCCAGCCAAACCAAACAC
 CGAGGAAATAAATACTCGGCCAAGCCCGGCAGCAGCAGAGCTACCATCCAGACACAGATGGCTTAGGCA
 TCAGGCCTGGTGGCCTATCAGAAGCTGACTTGGAAAGAGGGCCCCAAGCCAGAGGAGGATCTTTCTGT
 AAAGCGACTTCTAGAAGAAGAGTGTCCAGCCTGTTGGATCCTAATACAGGTCTAGCCCTGGACAAGCTG
 AGTCCCCTGACCAGCCTGGATGGCGAGACTGTATTGCCCTCACTACCAATTACCGAGACAAGTGT
 CTTCCCCTGATGCTGCAGCATCAGAGGAACCGAGAACCCTCCAGACATTCCGGAAGACAGTCCGACCCGG
 TCCCAGACTAAGCGCAACAGGCAGCGCCTGGCCAGCACTTTCTGCTCGGAGATGAGTCACTGCTGGAG
 ATGTTGTTGGAGCAGAACACGGTGCCTGTGGAAGCTGCGTCTGCGGCTTTGCGGAGGCTCTCAGTGTGCG
 GGAGGACCCTGAGTCTAGACCTAGCCACCAGTGGGCTCGGGCTCAGAAGCACAGCTGGGTAGAAAAAA
 GGCAGCTGAGAGCAGTCTGGCTGTGGCAGGAATCTA

ACGCGTACGCGGCCGCTCGAGCAGAAACTCATCTCAGAAGAGGATCTGGCAGCAAATGATATCCTGGATT
 ACAAGGATGACGACGATAAGGTTTAA

Protein Sequence:

>RR217527 representing NM_053944
 Red=Cloning site Green=Tags(s)

MLLLPFLGLLPGSYLFIISGACQEVATVTVKVFQVAEEVPSGTVIGKLSQEPGVEERRGKAGDAFQILQL
 PQALPIQMNSDGLLNTSSRLDREKLCRQQDPCLVSFDVLATGASALIHVEIQVLDINDHQPFKDEQE
 LEISESASLHTRIPLDRALDQDTGPNLSYSYSLSPSEHFALDVIIVGPDETKHAELVVVKELDREVHSYFD
 LVL TAYDNGNPPKSGTSVVKVNVLDSDNNSPVFAESSLALEIPEDTAPGTLINLTATDPDQGPNGEVF
 FFGKHVSPVEMNTFGIDAKTGQIVLLQPLDYEKNPAYEVDVQARDLGPNSIPGHCKVLIKVLDVNDNAPS
 IHITWASQMSLVSEDLPRDSFIALVVSANDLDSGNNGLVNVCWLNQELGHFRLKRTNGNTYMLLTSAMDRE
 QWPTYTLTVFAQDQGPQALSAEKELQIQVSDVNDNAPVFEKSRYEVSTWENNPPSLHLITLKAHDADLGS
 NGKVSYRIKIDSPVSHLVIDSETGEVTAQRSLDYEEMAGFEFQVIAEDRGQPQLSSSISVWVSLLDANDN
 TPEVIQPALSEGKATLSVLVNASGHLHLLPIESPSGMDPAGTGTPPKATHSPWSFLLVTIVARDADSGA
 NGELLYSIQSGNDAHLFVLSPLGQLFINVTNASSLIGSQWDLGIVVEDQGSPLQTQVSLKVVVFTSMD
 HLRDSAHEPGILSTPALAMICLAVLLAVFGLILALLVSIKRIEKRDNRAYNCREAESMYRHQPKRPQKHI
 QKADIHLVPMRLAQEAEAEVVRPPHKDTSKETLMEAGWDSCLQAPFHLTPTLYRTLNRQNGQALAESQE
 VLQDTFNFLLFNHPRQRNASRENLLPESPTLRQPLKPLKVPGPSPIARVTGDQGSKEAPQSPASSATL
 RRQRNLNGKVSPKGESSPHQILRSLVRLSVAFAERNPVEELAGDSPPVQIISQLLSLLHQGFQPKPNH
 RGNKYSAPKGSRRATIPDTDGLGIRPGGLSEPDLEEGPPSPEEDLSVKRLLLEELSSLLDPNTGLALDKL
 SPPDPAWMARLSLPLTTNYRDNLSSPDAAASEPRTFQTFGKTVGPGPELSATGTRLASTFVSEMSSLLE
 MLLLEQNTVPVEAASAALRRLSVCGRTLSLDLATS GASGSEAQLGRKKAESSLGCGRNL

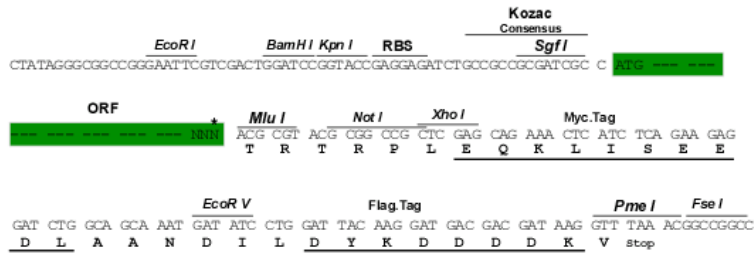
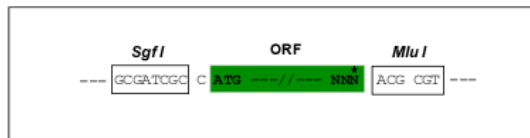
TRTRPLEQKLI SEEDLAANDILDYKDDDDKV

Restriction Sites:

Sgfl-MluI

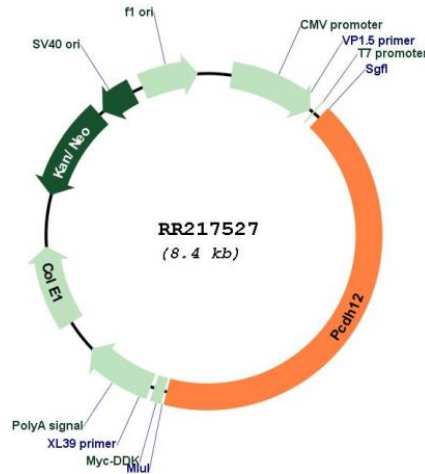
Cloning Scheme:

Cloning sites used for ORF Shuttling:



* The last codon before the Stop codon of the ORF

Plasmid Map:



ACCN: NM_053944

ORF Size: 3537 bp

OTI Disclaimer: The molecular sequence of this clone aligns with the gene accession number as a point of reference only. However, individual transcript sequences of the same gene can differ through naturally occurring variations (e.g. polymorphisms), each with its own valid existence. This clone is substantially in agreement with the reference, but a complete review of all prevailing variants is recommended prior to use. [More info](#)

OTI Annotation: This clone was engineered to express the complete ORF with an expression tag. Expression varies depending on the nature of the gene.

Components: The ORF clone is ion-exchange column purified and shipped in a 2D barcoded Matrix tube containing 10ug of transfection-ready, dried plasmid DNA (reconstitute with 100 ul of water).

Reconstitution Method:

1. Centrifuge at 5,000xg for 5min.
2. Carefully open the tube and add 100ul of sterile water to dissolve the DNA.
3. Close the tube and incubate for 10 minutes at room temperature.
4. Briefly vortex the tube and then do a quick spin (less than 5000xg) to concentrate the liquid at the bottom.
5. Store the suspended plasmid at -20°C. The DNA is stable for at least one year from date of shipping when stored at -20°C.

RefSeq: [NM_053944.1](#), [NP_446396.1](#)

RefSeq Size: 4183 bp

RefSeq ORF: 3540 bp

Locus ID: 116808

Cytogenetics: 18p11

MW: 128 kDa

Gene Summary: may play a role in cell-cell adhesion during spermatogenesis [RGD, Feb 2006]