

Product datasheet for **RR217523**

Lamb3 (NM_001100841) Rat Tagged ORF Clone

Product data:

Product Type: Expression Plasmids
Product Name: Lamb3 (NM_001100841) Rat Tagged ORF Clone
Tag: Myc-DDK
Symbol: Lamb3
Vector: pCMV6-Entry (PS100001)
E. coli Selection: Kanamycin (25 ug/mL)
Cell Selection: Neomycin
ORF Nucleotide Sequence: >RR217523 representing NM_001100841
Red=Cloning site Blue=ORF Green=Tags(s)

TTTTGTAATACGACTCACTATAGGGCGGCCGGGAATTCGTCGACTGGATCCGGTACCGAGGAGATCTGCC
GCC**CGATCGCC**

ATGATGACGGCACTTTCTCTTGTGGCTTGCCCTGGCCTCCTGTGTGCCAGCAACCTGCTCCC
GAGGGCCTGTTATCCACCTGTTGGGACTTGCTCATTGGAAGGACTCAGCTTCTTCGAGCCTCGTCTAC
CTGTGGATTGACCAAGCCTGAGACCTATTGCACCAATATGGACAGTGGCAGATGAAATGCTGCAAGTGT
GACTCCAGGCTGCCTCGCAACTACAACAGTCACCGAGTGGAGAAGCTTGTATCGTCTTCAGGCCCATGC
GCTGGTGGCAGTCCCAGAACGATGTGAGCCCTGTCTCTTCAACTGGACCTAGACAAGAGGATGACAGT
TCAGGACATAATGATGGATTTAAGGGTCTCATGCCAGCTGGCATGTTGATTGAGCGCTCTTCTGACTTT
GGCAAGACATGGAGGGTGTACCACTACCTGGCGACAGACTGTGCCAGCACCTTTCCCGAGTCCACCAGG
GCCAGCCCAAGAACTGGCAGGACGTCCGGTGCCGGCCCTGTCCCAGAGGCCTAATGGGCATCTGACTGG
GGGAAAGGTCCAACCTAACCTTATGGATTTGGCATCAGCTATCCCTGCATCTCAAAGTAAAAAGATTCAA
GAACTAGGAGACATCACGAACCTGAGAGTCAACTTCACCAAGCTGGCCCCAGTGGCCAGAGGGGCTCCT
ATCCACCCAGCGCTACTTTGCAGTATCACAGCTACGTCTACAGGGGAGTTGCTTCTGTGATGGACATGC
CGACCGCTGTGCCCTAATCCTGGAGGCCCTACAGGTTCCACCACCGCTGTGCAGGTCAACGATGTCTGT
GTCTGCCAGCACAAACAGCTGGCCCCAACTGTGACCGCTGCGCCCCCTTCTACAACAACCGGCCATGGA
GACCTGCAGAGGGACAGGACATCCATGAGTGCCAAAGGTGTGACTGCAATGGGCACTCAGAGACCTGCCA
CTTCGACCCAGCTGTGTTTGTGCTAGCCAAGGGACAAGTGGAGGCGTGTGTGACAACTGCCAGGACCAC
ACAGAGGGCAAGAACTGTGAGCGATGTCAGCTACACTATTTCCGGAATAGACGACCAGGCGCTCCCATTC
ATGAGACCTGTATTCCCTGCGAGTGTGATCCAGACGGGGCAGTCCCAGGAGCTCCCTGTGACCGACTGAC
GGGCCAGTGCCTGTGCAAAGACCAGTGAAGGGGAGCGCTGTGATCTTTGCAAGCCTGGTTTCACAGGG
CTCACCTTCGCCAACCCACAGGGTGCATCCCTGTGACTGCAGCATCTTAGTACCCGCAAGATATGC
CTTGTGAGGAGGAAACTGGACGCTGCTTGTGCTTCCCAATGTAGTGGGCCCAAAATGTGACCAAGTGGC
CCCTTCCCACTGGAAGCTGGCCAGCGGGCGGGGCTGTGAGCCCTGTGCCTGTGACCCACGCAACTCCCTC
AGCTCCAGTGAACAGTTTACAGGGCAGTGTCTTGTGCGGAAGGGTTTGGTGGCCTCACATGTAGTT
CTGCAGCCATTGTCAGTGTCCCAGCGGACCCATGGAGACGTGGCCACAGGGTGGCCAGCCTGTGACTG
TGACTTCAGAGGAACCGAGGGTCTGGCTGTGACAAAACCTCAGGCCGTTGCCTCTGCCGCCCGGCTTG



[View online >](#)

ACAGGGCCCCGCTGCGACCAGTGCCAACGAGGCTACTGCGACCGCTACCCAGTGTGTGTGGCCTGCCACT
 CTTGCTCCAGGCCTATGACACAGACCTCCAGGAGCAGGCTTGGCGCCTTGGCAGTCTCCGTAATACCAC
 TGAAGGCTGGGCACAGGGACAGGTCTGGAGGACCGTGGCCTGGCTTCTCGGTTGCTAGATGCCAAGAGC
 AAAATCGAGCAGATCAGACAGATTCTGGGTGGCACCTCTGTACAGAGCGGGATGTGGCTCAAGTGGCCA
 ATGCCATCCTGTCTATCAGGAGGACTCTCAGGGCCTGCCCTGGACCTACCCTTAGAGGAGGAGATGGA
 ATCCTTCTCTGGAGACCTGGGAATCTAGACAGAAGCTTCAATCGCCTCCTCCTTATGTACCGGAGCAAG
 AAGGACAGTGTGAGAAGCTAAGCAGTGTGACCCCTTCAGGACCTCCGCATGTGACTATGGCTTATG
 AGCAGTCTCCCGGCTGCACAGCAAGTATCCGACAGTTCAGCCTGCTGAGCCAGCTGAGGGACAGTCG
 CAGAGAGGTAGAAGTCTGGAGAGACAGACTGGAGAGGGAGGAGCTGGAGGAGCTCAGCTCATGGCCCTG
 CGCCTAGAGATGGCTTCACTGCCTGACTTGACACCCACCATCAACAAGCTCTGTGGTGGCTCTAGGCAGA
 CAGCTGCACCCAGGAGACTGCCCTGGATTGCTGTGTCCCAGGACAATGGTACAGCCTGTGGCTCTCA
 CTGCAGGGGAGCCCTGCCAGAGCCAGAGGGCCCTTACACATGGCAGGGCAGGTAGCTGAGCAGCTACGA
 AGCTTCAATACCCAGCTCCAGCAGACCAGGCAATGATCAGGGCAGCTGAGGAGGCAGCATCAAAGTCC
 AATCAGATGCCACGGCCTTGGACTCAGGTGAGTACCAGCCGTTACAGATGGAGGAAGATGTCCGGCG
 CACACGGCTTCTCATCCAGCAGGTCCGGGGCTTCTCACAGACCCTCACACAGATGCAGCCACCATCCAA
 CAGGTGAGCGAGGAGTCTGGCTCTCTGGCTGCCACAGACTCAGCTACAGTGCTACGCAAGATGAAAG
 AGATCCAGGACATTGCTGCCAGGCTCCCTAACGTGGACTTAGTGCTATCCAGACTAAGCAGGACATTGC
 ACGGGCCCGCAGGCTCCAGGCTGAGGCCGAGAAGGCCAGAAGCCGAGCCACGTTGTGGAAGGGCAGGTG
 GATGACGTGGTCGGGAACCTCAGGCAGGGCACCCTGGCTCTGCAGGAGGCTCAGGACACTATGCAGGGCA
 CTGGCCGCTCTCTTCGGCTCATCCAGGAAAGGGTTACTGAGGTTACGACAGTCTGGTACCAGCTGAAAG
 GCTGGTGAAGGCATGAAGGAACAGATGAGTGGATTCTGGGCACGGGTGAAGGAGCTCCGCCATCAGGCC
 CAGGAAGAGCAGGCACAGGCAATGAAGGCCAGCAGCTGCAGAGGGTCCAGCAATCAGGCCATGAATG
 CTCAGGAGGGCTTTGAGAGACTTAAGCAAAGGTATACAGAGTTGAAAGACCGGCTGGGTGAGATCTAT
 GCTGGGTGAGCAAGGCAATCGGATCTTGAAGCATCAAGGGCAGGAGGAGCTTTGGGGAAACCATG
 GAAATGATGGATAAAATGAAAGACATGGAGTCAAGAGCTGCTTCGAGGGAGTCAAGGCCATCATGCTTCGTT
 CAGCAGACCTGTCCGGGCTGGAGAAGCGCTGGAGCAGATCCGCAGTTACATCAACGGGCGTGTGCTGTA
 CTATGCCACCTGCAAG

ACGCGTACGCGGCCGCTCGAGCAGAACTCATCTCAGAAGAGGATCTGGCAGCAATGATATCCTGGATT
 ACAAGGATGACGACGATAAGGTTTAA

Protein Sequence:

>RR217523 representing NM_001100841
 Red=Cloning site Green=Tags(s)

MMTALFLLWLALPGLLCAQQPCSRGACYPPVGDLLIGRTQLLRASSTCGLTKPETYCTQYQWQMKCKC
 DSRLPRNYNSHRVENVVSSGPMRWQSQNDVSPVSLQLDLDKRMQLQDIMMDFKGLMPAGMLIERSDF
 GKTWRVYQYLATDCASTFPQVHQGPKNWQDVRCRPLSQRPNHGLTGGKVQLNLMDLASAIPASQSKKIQ
 ELGDITNLRVNF TKLAPVPQRGSYPPSAYFAVSQLRLQGSCFCHGHADRCAPNPGGPTGSTTAVQVNDVC
 VCQHNTAGPNCDRCAFYNNRPWRPAEQDIHECQRDCDNGHSETCHFDPVFAASQGTSGGVCDNCQDH
 TEKNCERCQLHYFRNRRPGAPIHETCIPCECDPDGAVPGAPCDRLTGQCVCVCKDHVQGERCDLCKPFTG
 LTFANPQGCHPCDCSILGTRQDMPCEEETGRCLCLPNVVGPKCDQCAPSHWKLASGRGCEPCACDPRNSL
 SSQCNQFTGQPCREGFGGLTCSAAIRQCPDRTHGDVATGCRACDCDFRGTEGPGCDKTSRGLCRPGL
 TGPRCDQCQRGYCDRYPVCVACHSCFQAYDTDLQEAWRLGSLRNTTEGLGTGLEDGLASRLDAKS
 KIEQIRQILGGTSVTERDVAQVANAILSIRRTLQGLPLDLPLEEEMESFSGDLGNLDRSFNRLLLMYRSK
 KEQFEKLSVDPSSGAFRMLTMAYEQSSRAAQVSDSSLLSQLRDSRREVEGLERQTGEGGAGGAQLMAL
 RLEMASLPDLTPTINKLGGSRQTAQPGDCPGLLCPQDNGTACGSHCRGALPRARGALHMAGQVAEQLR
 SFNTQLQTRQMIRAAEEAASKVQSDAQRLETQVSTSRMQMEEDVRRTRLLIQQVRGFLTDPHTDAATIQ
 QVSEAVLALWLPDTSATVLRKMKIQQDIAARLPNVDLVLSQTKQDIARARRLQAEAEKARSRAHVVEGQV
 DDVVGNLRQGTVALQEAQDTMQGTGRSLRLIQERVTEVQQVLPVPAERLVKGMKEQMSGFWARVKELRHQA
 QEEQAQAMKAQQLAEGASNQAMNAQEGFERLKQRYTELKDRLGQSSMLGEQGNRILSIKAEAEELFGETM
 EMMDKMKDMESELLRGSQAIMLRADLSGLEKRVQIRSYINGRVLYYATCK

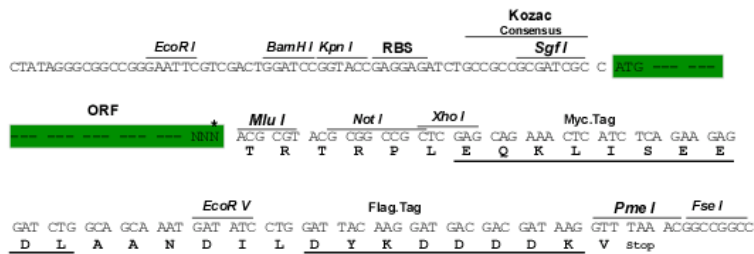
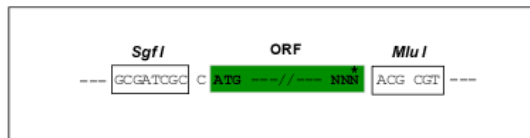
TRTRPLEQKLI SEEDLAANDILDYKDDDDKV

Restriction Sites:

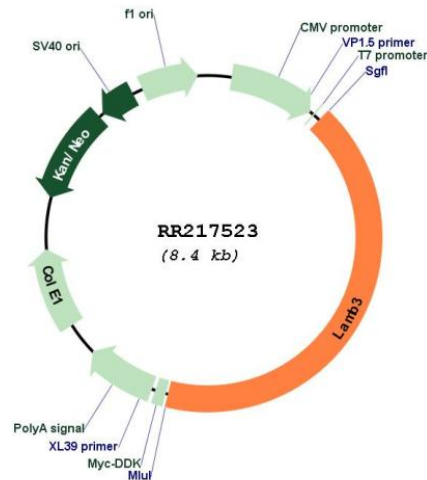
Sgfl-MluI

Cloning Scheme:

Cloning sites used for ORF Shuttling:



* The last codon before the Stop codon of the ORF

Plasmid Map:


ACCN: NM_001100841

ORF Size: 3516 bp

OTI Disclaimer: The molecular sequence of this clone aligns with the gene accession number as a point of reference only. However, individual transcript sequences of the same gene can differ through naturally occurring variations (e.g. polymorphisms), each with its own valid existence. This clone is substantially in agreement with the reference, but a complete review of all prevailing variants is recommended prior to use. [More info](#)

OTI Annotation: This clone was engineered to express the complete ORF with an expression tag. Expression varies depending on the nature of the gene.

Components: The ORF clone is ion-exchange column purified and shipped in a 2D barcoded Matrix tube containing 10ug of transfection-ready, dried plasmid DNA (reconstitute with 100 ul of water).

Reconstitution Method:

1. Centrifuge at 5,000xg for 5min.
2. Carefully open the tube and add 100ul of sterile water to dissolve the DNA.
3. Close the tube and incubate for 10 minutes at room temperature.
4. Briefly vortex the tube and then do a quick spin (less than 5000xg) to concentrate the liquid at the bottom.
5. Store the suspended plasmid at -20°C. The DNA is stable for at least one year from date of shipping when stored at -20°C.

RefSeq: [NM_001100841.1](#), [NP_001094311.1](#)

RefSeq Size: 4078 bp

RefSeq ORF: 3519 bp

Locus ID: 305078

Cytogenetics: 13q27

MW: 129.1 kDa