

## Product datasheet for RR217500

### Ddb1 (NM\_171995) Rat Tagged ORF Clone

#### Product data:

Product Type:	Expression Plasmids
Product Name:	Ddb1 (NM_171995) Rat Tagged ORF Clone
Tag:	Myc-DDK
Symbol:	Ddb1
Vector:	pCMV6-Entry (PS100001)
E. coli Selection:	Kanamycin (25 ug/mL)
Cell Selection:	Neomycin
ORF Nucleotide Sequence:	>RR217500 representing NM_171995 Red=Cloning site Blue=ORF Green=Tags(s)

TTTTGTAATACGACTCACTATAGGGCGGCCGGAATTCGTCGACTGGATCCGGTACCGAGGAGATCTGCC  
GCCCGATCGCC

ATGTCGTACAACACTACGTCGTAACGGCGCAGAAGCCTACCGCAGTGAACGGCTGTGTGACCGGACACTTTA  
CTTCAGCGGAAGACTTGAACCTGTTGATTGCTAAAAACACAAGATTAGAGATCTATGTGGTCACCGCAGA  
AGGCCTACGGCCAGTCAAAGAGGTGGGGATGTATGGGAAGATCGCAGTTATGGAGCTCTTCAGACCCAAG  
GGGAGAGTAAAGACCTGCTGTTTCATCTTGACTGCTAAGTACAATGCCTGCATCCTGGAGTATAAGCAGA  
GTGGTGAAGCATTGATATCATTACAAGGGCCCATGGCAATGTCCAGGACCGTATTGGTCCGCCCTCAGA  
GACTGGCATCATTGGCATCATTGACCCTGAGTGCCGTATGATTGGCCTCCGACTCTACGATGGCCTTTTC  
AAGTCCATTCCACTAGACCGAGACAATAAAGAGCTCAAGGCCCTTAACATCCGCCTAGAAGAATTGCATG  
TCATCGATGTCAAGTTCCTGTATGGTTGTCAAGCGCCTACCATTGCTTTGTCTACCAGGATCCTCAGGG  
GCGGCACGTGAAAACCTATGAGGTGTCTCTTCGGGAGAAGGAGTTCAACAAGGGCCCTTGAAGCAGGAG  
AATGTAGAAGCCGAAGCTTCAATGGTGATCGCAGTCCCGGAGCCTTTGGAGGTGCCATCATCATTGGAC  
AGGAGTCAATTACCTATCACAATGGTGATAAATACCTGGCAATCGCTCCTCCTATCATTAAAGCAAAGCAC  
TATTGTGTGCCATAACCGGGTGGATCCTAATGGCTCACGGTACCTTCTGGGAGATATGGAAGGACGGCTT  
TTCATGCTGCTCTTAGAGAAGGAGGAGCAGATGGATGGCACCGTACCCCTCAAGGACCTTCGAGTGGAAAC  
TCCTTGGAGAGACCTCCATTGCAGAGTGCCTAACATATCTTGATAACGGTGTGTGTTTGTCCGGTCTCG  
CCTGGGTGATTCCCAGCTCGTAAAGCTCAATGTGACAGCAATGAACAAGGCTCCTATGTAGTGGCTATG  
GAAACCTTTACCAACTTAGGACCATTTGGATATGTGTGTGGTGGACCTGGAGAGGCAGGGACAGGGTC  
AGCTGGTCACTTGCTCTGGAGCTTTCAAGGAAGGTTCTTGGCGATCATCCGGAACGGAATTGGAATCCA  
TGAGCATGCCAGCATTGACTTACCAGGCATCAAAGGTTTATGGCCACTGCGGTCTGACCCAAGTCCGGAG  
AAGAAAACAGAATTGATGGCTTTGTGGACGATCAGCAGACTTTCTTTTGGCCTAATGTGGCTCATCAGCA  
GCTTATCCAGATCACCTCAGCGTCTGTAAGGTTGGTCTCTCAAGAGCCAAAGCTTTGGTCAAGGAGTGG  
AAGGAGCCCAGGGCAAGAACATCAGTGTGGCCTCCTGTAACAGCAGCCAGGTGGTGTGCTGTGGGAA  
GGGCACTATACTATCTTCAGATCCATCCTCAGGAGCTCCGGCAAATCAGCCACACAGAGATGGAACATGA  
AGTGGCTTGTGGATATCACCCACTAGGAGAGCAATGGCCTGTCCCACTTTGTGCCATTGGTCTC



[View online »](#)

TGGACAGATATTTTCAGCTCGTATCTTGAAGCTCCCATCCTTTGAACTACTGCACAAGGAGATGCTGGGTG  
 GAGAGATCATCCCTCGATCTATCCTGATGACCCTTTTGGAGCAGCCACTACCTCCTTTGTGCCTTGGG  
 AGATGGGGCTCTCTTCTACTTTGGGCTCAACATAGAGACAGGCTTACTGAGTGACCGTAAAAAGGTGACT  
 TTGGGTACCCAGCCCACGGTGTGAGGACATCCGTTCTCTTTTACCACCAACGCTTTTGTGCTCAG  
 ACCGGCCCACTGTCATCTATAGCAGCAATCATAAGTTGGTCTTCTCCAATGTTAACCTCAAGGAGGTGAA  
 CTATATGTGTCTCTCAACTCAGATGGCTATCCTGACAGTGGCATTGGCCAATAACAGCACTCTACC  
 ATTGGCACCATCGATGAGATCCAGAACTCCATATTCGCACGGTCTCTCTATGAATCTCCCAGGAAGA  
 TCTGTTATCAGGAAGTGTCTCAGTGCTTTGGGGTCTTTCCAGCCGATTGAAGTTCAAGATACCAAGTGG  
 AGGCACTACTGCTTTGAGGCCAGTGCTAGCACCCAGGCCCTGTCCAGCAGCGTCAGCTCCAGCAAGCTC  
 TTCTCTAGTAGTACGGCTCCTCACGAGACCTCCTTTGGAGAAGAGGTGGAAGTGCACAACCTCCTCATCA  
 TTGACCAGCATACTTTTGAAGTGCTTCATGCCATCAGTTTCTACAAAATGAGTATGCCCTCAGCCTGGT  
 CTCCTGCAAAATGGGTAAGACCCCAACACATACTTCATTGTGGGCACAGCCATGGTATATCCTGAAGAG  
 GCGGAGCCCAACAGGGTGTATTGTTGGTCTTCCAGTATTCGGATGGAAGTACAGACTGTGGCCGAAA  
 AGGAAGTAAAGGGGGCTGTACTCTATGGTGGAGTTAATGGGAAGCTGCTTGTAGCATCAACAGCAC  
 GGTGCGGCTCTATGAATGGACCACAGAAAAGAACTTCGCACTGAGTGAATCACTACAACAACATCATG  
 GCCTGTACCTGAAGACCAAGGGCGACTTCATCCTGGTGGGCGACCTCATGCGATCAGTGTACTGCTTG  
 CCTACAAGCCTATGGAAGGAACTTTGAAGAGATTGCCCGAGACTTTAATCCCAACTGGATGAGTGCAGT  
 GGAGATCTTGGATGATGACAATTTCTGGGAGCTGAGAATGCCTTTAACTTGTGTTGTGTGTCAGAAGGAC  
 AGTGCTGCCACCACTGATGAGGAGCGGCAGCACCTACAGGAGGTTGGTCTCTTCCACCTGGGCGAGTTTG  
 TCAATGTGTTCTGCCATGGCTCCCTAGTTATGCAGAATCTGGGCGAGACTTCTACCCCTACCCAGGGCTC  
 GGTGCTCTTTGGCACAGTCAACGGCATGATAGGGCTGGTACCTCACTGTGCGAGAGCTGGTACAACCTC  
 CTGTTGGACATGCAGAACCAGCTCAATAAGGTCATCAAAGTGTGGCAAGATTGAGCACTGATTTGAAAGTTT  
 CCTAGATATCAGCCGCCCAAGATGCAGGAGTTGTGGCAAACCTTGCAGTATGATGAGCAGTGGTATG  
 AAGCGGGAGGCAACTGCAGATGACCTCATCAAAGTCGTGGAGGAGCTAACTCGGATCCAT

ACGCGTACGCGGCCGCTCGAGCAGAACTCATCTCAGAAGAGGATCTGGCAGCAATGATATCCTGGATT  
 ACAAGGATGACGACGATAAGGTTTAA

**Protein Sequence:**

>RR217500 representing NM\_171995

Red=Cloning site Green=Tags(s)

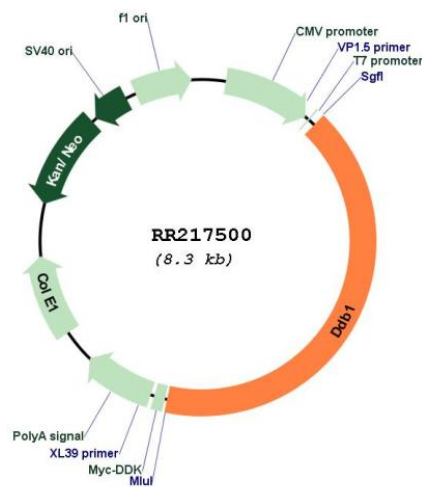
MSYNYVVT AQKPTAVNGCVTGHFTSAEDLNLLIAKNTRLEIYVVTAEGLRPVKEVGMGKIAVMELFRPK  
 GESKDLLFILTAKYNACILEYKQSGESIDIITRAHGNVQDRIGRPSETGIIGIIDPECRMIGLRLYDGLF  
 KVIPLDRDNKELKAFNIRLEELHVIDVKFLYGCQAPTICFVYQDPQGRHVKTIEVSLREKEFNKGPWKQE  
 NVEAEASMVIIVPEPFGGAIIGQESITYHNGDKYLAIAPPIIKQSTIVCHNRVDPNGSRYL LGDMEGRL  
 FMLLLEKEEQMDGTVTLKDLRVELLGETSIAECLTYLDNGVVFVGSRLGDSQLVKLNVDNSNEQGSYVVAM  
 ETFTNLGPIVDMCVVDLERQGGQLVTCGAFKEGSLRIIRNGIGIHEHASIDLPGIKGLWPLRSDPSRE  
 TDDTLVLSFVGQTRVLMNGEEVEETELMGFVDDQQTFFCGNVAHQQLIQIT SASVRLVSQEPKALVSEW  
 KEPQGNISVASCNSSQVVAVGRALYYLQIHPQELRQISHTEMEHEVACLDITPLGESNGLSPLCAIGL  
 WTDISARILKLPSEFELHKEMLGGEIIPRSILMTTFESSHYLLCALGDGALFYFGLNIETGLLSDRKVT  
 LGTQPTVLRFRSLSTTNVFACSRPTVIYSSNHKL VFSNVNLKEVNYMCPNLSGYPDSLALANNSTLT  
 IGTIDEIQKLHIRTVPLYESPRKICYQEVSQCFVLSRRIEVQDTSGGTTALRPSASTQALSSSVSSSKL  
 FSSSTAPHETSFGEVEVHLLIIDQHTFEVLHAHQFLQNEYALSLVSCKLGKDPNTYFIVGTAMVYPEE  
 AEPKQGRIVVFQYSDGKLQTVAEKEVKGAVYSMVEFNGLKLLASINSTVRLYEWTEKELRTECNHYNNIM  
 ALYLKTKGDFILVGDLMRSVLLLAYKPMEGNFEEIARDFNPNWMSAVEILDDDNFLGAENAFNLFVCQKD  
 SAATTDEERQHLQEVGLFHLGFEFVNVFCHGSLVMQNLGETSTPTQGSVLFGTVNGMIGLVTSLSESWYNL  
 LLDMQNRLNKVIKSVGKIEHSFWRFSFHTERKTEPATGFIDGDLIESFLDISRPKMQEVVANLQYDDGSGM  
 KREATADDLIKVVEELTRIH

TRTRPLEQKLI SEEDLAANDILDYKDDDDKV

**Restriction Sites:**

Sgfl-MluI

**Cloning Scheme:**

**Plasmid Map:**


**ACCN:** NM\_171995

**ORF Size:** 3420 bp

**OTI Disclaimer:** The molecular sequence of this clone aligns with the gene accession number as a point of reference only. However, individual transcript sequences of the same gene can differ through naturally occurring variations (e.g. polymorphisms), each with its own valid existence. This clone is substantially in agreement with the reference, but a complete review of all prevailing variants is recommended prior to use. [More info](#)

**OTI Annotation:** This clone was engineered to express the complete ORF with an expression tag. Expression varies depending on the nature of the gene.

**Components:** The ORF clone is ion-exchange column purified and shipped in a 2D barcoded Matrix tube containing 10ug of transfection-ready, dried plasmid DNA (reconstitute with 100 ul of water).

**Reconstitution Method:**

1. Centrifuge at 5,000xg for 5min.
2. Carefully open the tube and add 100ul of sterile water to dissolve the DNA.
3. Close the tube and incubate for 10 minutes at room temperature.
4. Briefly vortex the tube and then do a quick spin (less than 5000xg) to concentrate the liquid at the bottom.
5. Store the suspended plasmid at -20°C. The DNA is stable for at least one year from date of shipping when stored at -20°C.

**RefSeq:** [NM\\_171995.2](#), [NP\\_741992.2](#)

**RefSeq Size:** 4260 bp

**RefSeq ORF:** 3423 bp

**Locus ID:** 64470

**Cytogenetics:** 1q43

**MW:** 126.9 kDa

**Gene Summary:** may be a DNA damage repair protein [RGD, Feb 2006]