

Product datasheet for **RR217490**

Ap4e1 (NM_001191742) Rat Tagged ORF Clone

Product data:

Product Type: Expression Plasmids
Product Name: Ap4e1 (NM_001191742) Rat Tagged ORF Clone
Tag: Myc-DDK
Symbol: Ap4e1
Synonyms: RGD1562199
Vector: pCMV6-Entry (PS100001)
E. coli Selection: Kanamycin (25 ug/mL)
Cell Selection: Neomycin
ORF Nucleotide Sequence: >RR217490 representing NM_001191742
Red=Cloning site Blue=ORF Green=Tags(s)

TTTTGTAATACGACTCACTATAGGGCGGCCGGAATTCGTCGACTGGATCCGGTACCGAGGAGATCTGCC
GCC**GCGATCGCC**

ATGAGCGACATGGTGGAGAGGACGCTGACCGCACTGCCGGGGCTCTTCTGCAGAACAGCTGGGAGGGC
CTGCGGCCTCCAGAGCACCTTCTTCTCCAGGCTGGGCGGCCTCATCCGTGGCGTCACTGCGCTCTCATC
CAAGCACGAAGAAGAGAAGTTAATCCAGCAGGAAGTGAAGTCTGAAGGCGACTGTTTCTGCTCCTACT
ACAACACTGAAAAATGATGAAGGAATGTATGGTGAGACTTATATACTGTGAGATGCTTGGATACGATGCTT
CTTTTGGTTATATACATGCAATCAAGTTGGCCCAACAAGGAAACCTTTAGAAAAAGAGTGGGTTATTT
GGCTGTTTCTCTGTTTCTACATGAAAGTCATGAACTTTTGCTTCTCCTTGTGAATACAGTGGTAAAGGAC
CTGCAGAGCACTAATCTGGTAGAAGTGTGTATGGCACTCACTGTCGTCAGCCAGATTTTCCCTCGAGAAA
TGATCCAGCTGTCCTTCCACTAATAGAAGAGAAAACCAACATTCTAAGGAGATTATACGAAGAAAAGC
AGTTCTGGCATTATACAAATTTTATCTCATTGCCCTAATCAAGTACAGCATATCCATACTAAGTTTCGG
AAAGCACTCTGTGACAGAGATGTTGGGGTCATGGCTGCCTTTGTCATATACCTTAGGATGATTAAGG
AAAATTTCTGGATATAAAGACTTGACTGAGAGTTTTGTAACAATTTTAAAGCAGGTGGTGGGGGAAA
GCTCCCTGTAGAGTTCAGTTACCACAGTGTGCCAGCGCCATGGTTACAGATTCAGCTCTTGAGAATACTG
GGACTGCTGGGAAAAGACGATGAAAGGACAAGTGAACATAATGTATGATGTTCTTGATGAATCCTTACGAA
GAGCCGAGTTAAATCACAAATGCACTTACGCTATTCTGTTGAGTGTGTACACACAATCTATTCTATTTA
TCCTAAATCAGAATTACTTGAGAAGGCTGCCAAGTGCATTGGAAAATTTGTTCTGTCACCTAAAATAAAC
CTCAAATATTTAGGACTGAAGGCTCTTACCTATGTTATCCAGCAGGATCCTTCTCGGCTCTTCAACACC
AGATAACCATAATTGAATGCCTAGACCACCTGATCCCATTATTTAAAGAGAGACTCTGGAACCTCTTTA
CAGAATTACAAATGCACAGAATGTAGTAGTTATTGTACAGAAAATGCTTGAATTTTACATCAGAGCAAA
GAAGAGTACATCATCACTTAGTCGGCAAAATAGCTGAATTGGCTGAGAAATATGCTCCTGACAACG
TGTGGTTCATTCAGACGATGAATGCTGTGTTTTAGTGGGAGGAGATGTAAATGCACCCAGACATTCTCAG
TAACTTTCTGAGACTGCTAGCAGAAGTTTTGATGATGAAACAGAAGATCAACAGTTAAGACTCTATGCA
GTTTCAGTCTTACCTCACCTTACTAGACATGGAAAACACTTTCTATCCACAGAGATTTCTTCAAGTTATGA



GTTGGGATTAGGAGAGTATTCCTACCTCTTAGATAGAGAAAGCCCCGAGGCAGTTATGACCAGGCTCTA
 CAAGTTACTGAGGAGTACTCCATTTCTCAGAAACGAAAGCATGGTTGTTTGTGCAGTAACCAAGTTA
 ACACCTCAAGCTCATTCTTCCCATAGTTGAGAACTTAATCCAAGAATCACTGTATCCTTGAATACTT
 GTCTGAGACAACATGCATTTGAATTGAAACATCTACATGAAAAAGAGAGCTTATGAAGAGCTTGCTTCA
 GAGTGCCTCAGAATTGTGACGACATCATGGCAGATGCTTCTTTATCTTTCTGGATGGTTTTGTGGCTGAA
 GGACTCAGTCAGGGAGCAGCACCTTATAAGCCCCGTACCAGCGCAAGAGGAGCAGCTCTCTCAGGAAA
 AAGTTCTCAATTTGAAACATATGGACTATCATTCTTCTCATCTGGCTTCACTGGACGACACTCCTCTGC
 TGGCGTTTCTCTGGCTCAGATATATCTGGAAACAGTGTCTGAAACAGGGCTGAAAGAGGCAGGTAGCCTG
 AAGATGGACGGCATAAAGAAATTATGGGGTAAAGAAGTTATCTCCCAAGAAGGAGAGTGGAGCTGCTG
 ATAAACTGGAAGCCGACATGCTCCTGCAGAGAGTGAATGATGGAGAATGTAGACCAAGCCATGACTAG
 GAAGGACCAAGCTCAAGGCCACACCCCTTCTACAGAGGAGAAAGAAAAGCAGCTGTTGGCATCATCGCTG
 TTTGTTGGGCTAGGACCAGAAAACGATCAATTTGTTGGGAAAAGCAGATGTTGTGCTTACAAGTTCA
 GGAGGAAGTCAAACCAAGGTAGCCAAAGTGACAAGATGCCAGCGCTCATGCCGCTCCCTCCTCCAC
 CCTTAGCCCTGTGTCGATGTGGCTGGGGGGATGAGGACAGTCTGAGCGCTGCGGATAGAGGAGACGGG
 GAGCTTGGTTCAGAGCTGTTGGGTTCTGAGTCTGTCTTGGAGCTGCCCTCAGTTGAAAACCTCTCGAGTG
 TCAGCTTGCCCGTGTCTTCTTTGTTGGCGGTAAAGCATGGAAGTATTTTCATCCCCCTTATCCTCTGC
 AACTTCAGCCGTCAAGGAAGTCAGTTTGGCTGCTCTGTTGGAAGAACTCCTGAATGCAGGCGTTACAGT
 CTCGTGGAATCTGTAGTAATGAACTGTGGCTGTGTCTTACAAAAGTCTGGAAGGATGAGTGTTTAT
 TGCTGGTGTGCTCAGTCACTAGTAAGACTGATTACAGAGTTCACAGATGCTCAATTAGAAAATTTTCTTT
 GGAAAATTTCAAGATCATTGAGCAGCCTGGATGTCCTTCACTGTGATGGAAGCAGAAAGCACCAAATCC
 TTCCAATATGGCGTGCAGATGGAAGCCCTTGTGTAGAGGGGACTCTCTCTGGTTTTATAAAGTATCAA
 TGATGGATACACATCCTGTTCAACTGGAATTTTCCATGAATTTACTACTAGATTTTATTAGGCCATT
 AAAGATCTCAACTGAAGACTTTGGCAAACCTGTTGTCTTTTGCAAATGATGTGAAGCAAATATAAAA
 ATATCAGAGCCTCGAGTTGCACCTGGCTTCTGCTCTGACAGAGCTGCAGCAGAAACTCAGACTTTGCGTGG
 TTGACGTCATAGGCAGTGAAGTCTGCTGGCCTGTAAGCTGCTTCCGTCACCCCTGTATCCTGCACTG
 CCGAGTACACGCTGACGTGGTAGCCCTGTGGTCCGATCCTCTAGCTCTGTTCTTTCAGACTGTTTATCT
 TGTCACTGTCAGAAAGTATGCAGACATCC

ACGCGTACGCGGCCGCTCGAGCAGAAACTCATCTCAGAAGAGGATCTGGCAGCAATGATATCCTGGATT
 ACAAGGATGACGACGATAAGGTTTAA

Protein Sequence:

>RR217490 representing NM_001191742
 Red=Cloning site Green=Tags(s)

MSDMVERTLTALPGLFLQNQLGGPAASRAPFFSRLGGLIRGVTALSSKHEEEKLIQQELSSLKATVSAPT
 TTLKMMKECMVRLIYCEMLGYDASFGYIHAIKLAQQGNLLEKRVGYLAVSLFLHESHELLLLLNTVVKD
 LQSTNLVEVCMALTVVSQIFPREMIPAVLPLIEEKLQHSKEIIRRKAVLALYKFYLIAPNQVQHIHTKFR
 KALCDRVDVGVMAASLHIYLRMIKENS SGYKDLTESFVTILKQVVGKLPVEFSYHSVPAPWLQIQLLRIL
 GLLGKDDERTSELMYDVLDESLRRAELNHNVTYAILFECVHTIYSIYPKSELLEKAAKCIKGFVLSPKIN
 LKYLGLKALTYVIQQDPSLALQHQITIIIECLDHPDPIIKRETLELLYRITNAQN VVVIVQKMLEYLHQSK
 EEYIIINLVGKIAELAEKYAPDNVWFIQTMNAVFSVGGDMVHPDILSNFLRLLAEGFDDEDEDQQLRLYA
 VQSYLTL LDMENTFYQPQRFQVMSWVLGEYSYLLDRESPEAVMTRLKLLRSDSISSETKAWLFAAVTKL
 TPQAHSSPIVENLIQEFTVSLNCLRQHAFELKHLHENEELMKSLLQSAQNCDDIMADASL SFLDGFVAE
 GLSQGAAPYKPRHQREQEQLSQEKVLFEPYGLSFSSSGFTGRQSPAGVSLGSDISGNSAETGLKEAGSL
 KMDGIKKLWGKEGYLPKKE SGAADKLEAAHAPAESAMMENV DQAMTRKDAQGHPTSTEEKEKQLLASSL
 FVGLGPENTINLLGADVVSYKFRRKSKPKVAQSDKMP SAHAAPSSTLSPVSDVAGGDEDSL SAADRGDG
 ELGSELLGSESVLELPSVENLSSVSLPVSSLFAGNDMEVFHPPSSSATS AVKEVSLAALLEETPECRRSA
 LVEICSNETVAVSSYKVKWDECLLLVCSVTSKTDSEFTDAQLEIFPLENFKIIEQPGCPSPVMEAE STKS
 FQYGVQMESPCVEGTL SGFIKYQMDTHPVQLEFSMNLSLLDFIRPLKISTEDFGKLWLSFANDVKQNIK
 ISEPRVALASVLT ELQQKLR LCVVDVIGSEGLLACKLLPSTPCILHCRVHADVVALLWFRSSSVLSDCLS
 CHCQKVMQTS

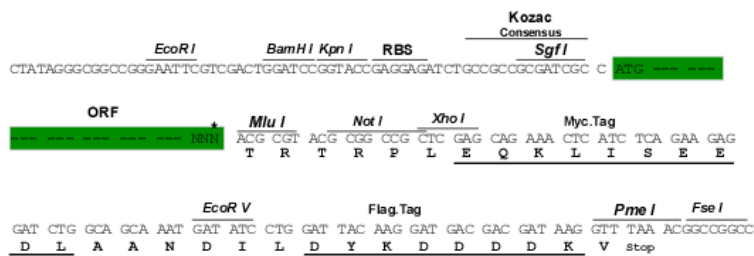
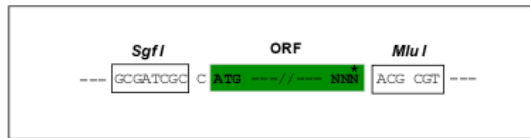
TRTRPLEQKLI SEEDLAANDILDYKDDDDKV

Restriction Sites:

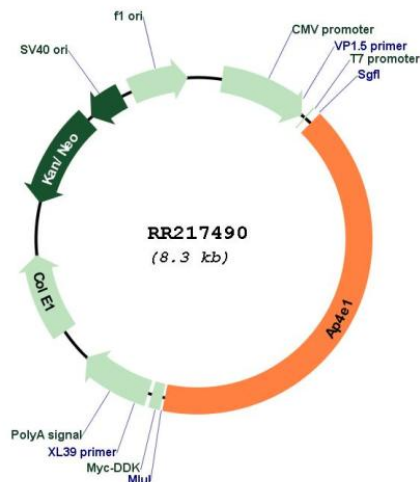
SgfI-MluI

Cloning Scheme:

Cloning sites used for ORF Shuttling:



* The last codon before the Stop codon of the ORF

Plasmid Map:


ACCN: NM_001191742

ORF Size: 3390 bp

OTI Disclaimer: The molecular sequence of this clone aligns with the gene accession number as a point of reference only. However, individual transcript sequences of the same gene can differ through naturally occurring variations (e.g. polymorphisms), each with its own valid existence. This clone is substantially in agreement with the reference, but a complete review of all prevailing variants is recommended prior to use. [More info](#)

OTI Annotation: This clone was engineered to express the complete ORF with an expression tag. Expression varies depending on the nature of the gene.

Components: The ORF clone is ion-exchange column purified and shipped in a 2D barcoded Matrix tube containing 10ug of transfection-ready, dried plasmid DNA (reconstitute with 100 ul of water).

Reconstitution Method:

1. Centrifuge at 5,000xg for 5min.
2. Carefully open the tube and add 100ul of sterile water to dissolve the DNA.
3. Close the tube and incubate for 10 minutes at room temperature.
4. Briefly vortex the tube and then do a quick spin (less than 5000xg) to concentrate the liquid at the bottom.
5. Store the suspended plasmid at -20°C. The DNA is stable for at least one year from date of shipping when stored at -20°C.

RefSeq: [NM_001191742.1](#), [NP_001178671.1](#)

RefSeq Size: 3448 bp

RefSeq ORF: 3393 bp

Locus ID: 311404

Cytogenetics: 3q36

MW: 125.5 kDa