

Product datasheet for **RR217481**

Srebf1 (NM_001276708) Rat Tagged ORF Clone

Product data:

Product Type: Expression Plasmids
Product Name: Srebf1 (NM_001276708) Rat Tagged ORF Clone
Tag: Myc-DDK
Symbol: Srebf1
Synonyms: ADD-1; ADD1; SREBP-1; SREBP-1c; Srebp1
Vector: pCMV6-Entry (PS100001)
E. coli Selection: Kanamycin (25 ug/mL)
Cell Selection: Neomycin
ORF Nucleotide Sequence: >RR217481 representing NM_001276708
Red=Cloning site Blue=ORF Green=Tags(s)

TTTTGTAATACGACTCACTATAGGGCGCCGGAATTCGTCGACTGGATCCGGTACCGAGGAGATCTGCC
GCCGGATCGCC

ATGGATTGCATTTGAAGACATGCTTCAGCTCATCAACAACCAAGACAGTGACTTCCCTGGCCTATTTG
ATGCCCCCTATGCTGGGGTGAGACAGGAGACACAGGCCCCAGCAGCCCTGGTGCCAGCTCTCCTGAGAG
CTTCTCTTCTCCTGCTTCTCTGGGCTCCTCTCTGGAAGCCTTCCCTGGGAGGACCAAGGTGACACCTGCA
CCCTTGTCCTCCACCATCGGCACCCACTGCTGTAAAGATGTACCCGTCGGTGCCCCCTTCTCCCTG
GGCCTGGAATCAAAGAGGAGCCAGTGCCACTCACCATCCTGCAGCCCCAGCACCACAGCCATCGCCAGG
GACCCTGTTGCCTCCGAGCTTCCCTCCTCCACCTGTGCAGCTCAGCCCTGCTCCTGTGCTGGGGTACTCA
AGCCTGCCTTCCGGCTTCTCAGGAACCTTCTGGGAACACCCAGCAGACGCCATCTAGCCTGCCACTGG
GCTCCACGCCAGGAATCTCGCCACCCCTTACACACCCAGGTCCAGAGCTCGGCCGCCAGCAGCCGCC
GCCAGCCTCAGCAGCCCCTAGAATGAGCACTGTGGCCTCACAGATCCAGCAGGTCCCGTTGTACTGCAG
CCACACTTCATCAAGGCAGACTCGCTGCTGCTGACAGCTGTAAGACAGACACAGGAGCCACAATGAAGA
CCGCAGGCATCAACACCCTGGCTCCTGGCACAGCCGTGCAGGCAGCCCTTGCAGACCTGGTGAGTGG
AGGGACCATCCTGGCCACAGTACCACTGGTTGTGGACACAGACAACTGCCCATCCACCCGACTAGCAGCT
GGTGGCAAGGCCCTGGGCTCAGCTCAGAGCCGTGGTGAGAAGCGCACAGCCACAATGCCATTGAGAAGC
GCTACCGTTCTCTATCAATGACAAGATTGTGGAGCTCAAGGACCTGGTGGTGGGCACTGAGGCAAAGCT
GAATAAATCTGCTGTCTTGCGAAGGCCATCGACTACATCCGCTTCTTACAGCACAGCAACCAGAAACTC
AAGCAGGAGAACCTGACCCTGCGAAGTGCTCACAAAAGCAAATCACTGAAAGACCTGGTGTGAGCTTGTG
GCAGTGGAGGAGGCACAGATGTGTCTATGGAGGCATGAAACCTGAAGTGGTAGAAACGCTGACCCCTCC
ACCCTCAGACGCCGGCTCACCTCCAGAGTAGCCCTTGTCTTGGGCAGCAGAGGCAGCAGCAGTGGT
GGCAGTACTCTGAGCCGACAGCCAGCCTTTGAGGATAACCAGGTGAAAGCCAGCGGCTGCCTTCAC
ATAGCCGAGGCATGCTGGACCGCTCCCGCTGGCCCTGTGTGACTGGTCTTCTGTGTCTGACCTGCAA
CCCATTGGCCTCACTGTTTGGCTGGGGCATCCTCACTCCCTCTGATGCTTCGGGTGTGCACCGTAGTTCT
GGGCGCAGCATGCTGGAGGCCGAGAGCAGAGATGGCTCTAATTGGACCCAGTGGTGTGCCACCCCTAG



[View online »](#)

TCTGGCTGGCCAATGGACTACTAGTGTGGCCTGCTTGGCTCTTCTTTGTCTACGGGGAACCTGTGAC
 CAGGCCACACTCCGGCCCGGCTGTACACTTCTGGAGACATCGAAACAAGCTGACCTGGATTTGGCCCGG
 GGAGATTTGCCAGGCCGCTCAACAGCTGTGGCTGGCCTTGCAAGCCCTGGGCCGGCCCTGCCACCT
 CAAACCTGGATCTGGCCTGCAGCCTGCTTTGGAACCTCGTCCGCCACCTGCTGCAGCGTCTTTGGTGGG
 CCGCTGGCTGGCAGGCCAGGCTGGGGCCTGCAGAGGGACTACAGGCTGAGAAAGGATGCTCGTGCCAGT
 GCCCGAGATGCGGCTGTCTGTCTACCATAAGCTGCACCAGCTGCATGCCATGGGCAAGTACACAGGAGGCC
 ATCTTGTGCTTCTAACCTGGCACTGAGTGCCCTAACCTGGCTGAGTGTGCAGGAGATGCTATATCCAT
 GGCAACACTGGCAGAGATCTACGTGGCAGCTGCCCTAAGGGTCAAAACCAGCCTCCCGAGGCCTTGCCAC
 TTCTTGACACGTTTCTTCTGAGTAGTGCCCGCCAGGCCTGCCTGGCACAGAGTGGTGCAGTGCCTCTTG
 CCATGCAGTGGCTCTGCCACCCTGTAGGTACCCTTTCTTCTGATGGGACTGGGCTGTACACGGTGC
 CCCCCAGGAGAGTCTGTACAGCGTGGTGGGAACCCAGTGGATCCACTGGCCAGGTGACCCGACTATTC
 TGTGAACATCTCCTGGAGCGAGCATTGAACTGTATCGCTCAGCCAGCCAGGGGAGCTGATGGAGACA
 GGGAGTTCTCAGATGCTCTTGGATATCTACAGTTGCTAAATAGCTGTTCTGACGCTGTCGGAGCTCTGC
 GTGCAGCTTCTGTGAGTCCAGCATGGCTACCACCCTGGCACAGACCAGTGGCCAAGTGGTGGCC
 TCACTGACAGCCGTGGTATCCACTGGCTGAGGCGGGATGAGGAGCAGCTGAACGTTATACCCACTGG
 TAGAGCACATTCCEAAGTGCTGCAGGAACTGAGAGACCCTTCCAGGGCAGCTCTGACTCCTTCAA
 GGCTGCCCGGGCTCTGCTGGACCACAGAAAGTGAATCCAGCCAGCCAGCCTGGCCATCTGTGAGAAG
 GCCAGTGGGTACCTGCGGGACAGCTTAGCCTCTACATCAACTGCCAGTTCATTGACAAGGCCATGCAGC
 TGCTCCTGTGTGATCTACTTCTTGTGGCCCGCACCAGCCTATGGCGGCGCAACAGTGCAGAGCTTACGC
 CCAGGGAGCTCACGGTACCAGCAATGGACCCAGGCCTCTGCTCTGGAGCTGCGTGGTTTCCAACATGAC
 CTGAGCAGCCTGAGGCGCTTGGCACAGAGCTTCCGGCCTGCTATGAGGAGGGTCTTCTACATGAGGCCA
 CAGCTCGGCTGATGGCAGGAGCAAGTCTGCCCGGACACACCAGCTCTGGACCGCAGTCTGCGGAGGCC
 GGCAGTTCCAGTGGCAAAGGAGGCGCTGCAGCTGAGCTGGAGCCTCGACCCACATGGCGGGAGCACACA
 GAGGCCTTGTGCTTGGCCTCCTGCTATCTGCCCTGCCTTCTGTCGGCCCGGAGCAGGAGTGAACA
 TGCTGGCTGAGGACGCGCACCGTGGAGAAGCTTGGCGATCACCGGCTCCTGCTTACTGCCAGCAGAT
 GCTCCTGCGCCTGGTGGCGGGACCCTGCTACTTCCAGC

ACGCGTACGCGGCCGCTCGAGCAGAACTCATCTCAGAAGAGGATCTGGCAGCAAATGATATCCTGGATT
 ACAAGGATGACGACGATAAGGTTTAA

Protein Sequence:

>RR217481 representing NM_001276708
 Red=Cloning site Green=Tags(s)

MDCTFEDMLQLINNQSDFPGLFDAPYAGGETGDTGPSSPGASSPESFSSPASLGSLEAFLGGPKVTPA
 PLSPPPSAPTAVKMYPSVPPFSPGPGIKEEPVPLTILQPPAPQPSPGTLLPSPFPPPVQLSPAPVLGYS
 SLPSGFSGLPGNTQQTSSLPLGSTPGISPTPLHTQVQSSAAQPPASAAAPRMSTVASQIQVPPVVLQ
 PHFIKADSLLLTAVKTDGTATMKTAGINTLAPGTAVQAGPLQTLVSGGTILATVPLVVDTKLPIHRLAA
 GGKALGSAQSRGEKRTAHNAIEKRYRSSINDKIVELKDLVVGTEAKLNKSAVLRKAIDYIRFLQHSNQKL
 KQENLTLRSAHKSLSKDLVSACSGGGTDVSMGMPKPEVETLTPPPSDAGSPSQSSPLSLGSRGSSSG
 GSDSEPDSPAFEDNQVKAQRLPSHSRGMIDRSRLALCVLVFLCLTCNPLASLFGWGILTPSDASGVHRSS
 GRSMLEAESRDGSNWTQWLLPPLVWLANGLLVLAACLALLFVYGEVTRPHSGPAVHFWRHRKQADLDLAR
 GDFQAQAQQLWLALQALGRPLPTSNLNLACSLLNWLVHLLQRLVWGRWLAGQAGGLQRDYRLRKDARAS
 ARDAVVYHKLHQLHAMGKYTGHLVASNLALSALNLAECAGDAISMATLAEIYVAAALRVKTSPLRALH
 FLTRFFLSARQAQLAQSGAVPLAMQWLCHPVGHRFFVDGDWAVHGAPQESLYSVAGNPVDPLAQVTRLF
 CEHLLERALNCIAQPSGAADGDFSDALGYLQLLNSCSDAVGAPACSFVSSSMATTTGDPVAKWWA
 SLTAVVIHWLRRDEEAERLYPLVEHIPQVLQETERPLPRAALYSFKAARALLDHRKVESSPASLAICEK
 ASGYLRDSLASTSTASSIDKAMQLLLCDLLLVARVSLWRRQQSAASAQGAHGTSNGPQASALELRGFQHD
 LSSLRRLAQSFAPMRRVFLHEATARLMAGASPARTHQLLDRSLRRRAGSSGKGGAAAELEPRPTWREHT
 EALLLASCYLPPAFLSAPGQRVSMLEAAARTVEKLGDRHLLLDCCQMLLRLGGGTTVTSS

TRTRPLEQKLISEEDLAANDILDYKDDDDKV

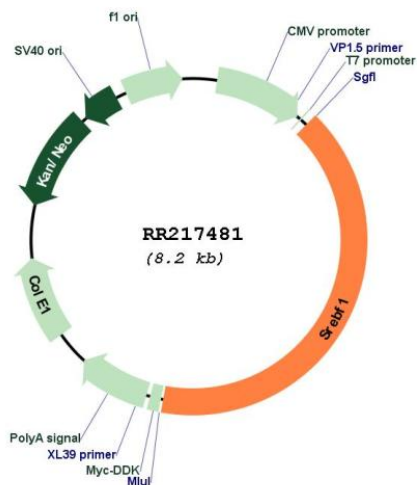
Restriction Sites:

Sgfl-MluI

Cloning Scheme:



Plasmid Map:



ACCN: NM_001276708

ORF Size: 3330 bp

OTI Disclaimer: The molecular sequence of this clone aligns with the gene accession number as a point of reference only. However, individual transcript sequences of the same gene can differ through naturally occurring variations (e.g. polymorphisms), each with its own valid existence. This clone is substantially in agreement with the reference, but a complete review of all prevailing variants is recommended prior to use. [More info](#)

OTI Annotation: This clone was engineered to express the complete ORF with an expression tag. Expression varies depending on the nature of the gene.

Components:	The ORF clone is ion-exchange column purified and shipped in a 2D barcoded Matrix tube containing 10ug of transfection-ready, dried plasmid DNA (reconstitute with 100 ul of water).
Reconstitution Method:	<ol style="list-style-type: none">1. Centrifuge at 5,000xg for 5min.2. Carefully open the tube and add 100ul of sterile water to dissolve the DNA.3. Close the tube and incubate for 10 minutes at room temperature.4. Briefly vortex the tube and then do a quick spin (less than 5000xg) to concentrate the liquid at the bottom.5. Store the suspended plasmid at -20°C. The DNA is stable for at least one year from date of shipping when stored at -20°C.
RefSeq:	<u>NM_001276708.1, NP_001263637.1</u>
RefSeq Size:	4264 bp
RefSeq ORF:	3333 bp
Locus ID:	78968
UniProt ID:	<u>P56720</u>
Cytogenetics:	10q22
MW:	118 kDa
Gene Summary:	transcription factor; binds to the sterol regulatory element 1; regulates the transcription of genes important for sterol biosynthesis [RGD, Feb 2006]