

## Product datasheet for **RR217370**

### **Myo19 (NM\_001163736) Rat Tagged ORF Clone**

#### **Product data:**

Product Type:	Expression Plasmids
Product Name:	Myo19 (NM_001163736) Rat Tagged ORF Clone
Tag:	Myc-DDK
Symbol:	Myo19
Synonyms:	RGD1559961
Vector:	pCMV6-Entry (PS100001)
E. coli Selection:	Kanamycin (25 ug/mL)
Cell Selection:	Neomycin



[View online »](#)

**ORF Nucleotide Sequence:**

>RR217370 representing NM\_001163736  
 Red=Cloning site Blue=ORF Green=Tags(s)

TTTTGTAATACGACTCACTATAGGGCGGCCGGGAATTCGTCGACTGGATCCGGTACCGAGGAGATCTGCC  
 GCC**CGATCGCC**

ATGCACCAGCAGGTGAATGGCCACAGTTTAGGCTCTGATACCCAAGGCAGGACATCCCTCAAGGGCGACC  
 TAAGGGAGTTCTGGGTGGGAGGTCCCACTGCACCAGCTGGATGACCTACCAAGTGAATCCCGTGAC  
 ACTGAAACAGTCTGAGGTGCCTGCAGGCCCGGTACACAGAAGACATATTCTATACCAATGCTGGCTGT  
 ACCTTGGTAGCTCTGAACCCCTTAAAGCACATCCCTCAACTCTATGCACCAGAACTGATGCAAGAGTACC  
 ATGCTGCACCTCAGCCTCAGAAATTAACCCACATCTTACAGTGGGTGAGCAGACCTACAGGAATGT  
 CAAGAGCTTGATTGAGCCGATCAACCAATCCATTGTGGTCAGTGGAGAGAGCGGAGCAGGAAAGACATGG  
 ACATCCCGATGCCTGATGAAGTTCTATGCTGTGGTGGCTGCCTCACCTACTTCTGTGAGAACACAAGA  
 TGGCAGAGCGGATTGAAGAGCGGATCCTGAACCTCAACCTGTCCATGGAAGCTTTTGGGAACGCATGCAC  
 ACTGAGGAATAACAACAGCAGTCGCTTTGGGAAGTTCATCCAGCTCCAGCTGAACAGAGCCCAACAGATG  
 ACAGGAGCTGCAGTCCAGACCTACTCCTAGAGAAAACCCGTGTGGCCTGTCCAGGCCCGCAGTGAGAGGA  
 ACTTCCACATCTTCTACCAGATTTGCAAAGGAGCCACCAAGGAAGAAAGGCTCCAGTGGTGCCTCCCTGA  
 GGGAACTGCCTTCTCCTGGCTACCCAATCCAGAAAGCAGTCTGGAAGAGGATTGTTTCGAGGTGACCAGA  
 GAGGCCATGCTCCATCTGGGCATCGACACCCCCACCCAGAAACAACATCTTAAAGTCTAGCTGGACTAC  
 TGCACCTTGGCAATGTCCACTTCGTTGACTCAGAGGATGAAGCCAGCCCTGCCAACTGATGGATGGTAC  
 CAAGGGCTCTGTCAGGACCTCAGCCTTGGTGTGTCAGCTCCAGACAACATGCTGCTGGAGAGCATGCAG  
 ATTCGAACCATCAAGGCAGGCAAGCAGCAGCAGGTGTTCCAGAAGCCCTGCTCCAGAGCTGAGTGTGACA  
 CACGCAGAGACTGTCTGGCCAACTGATCTATGCACGGCTATTGACTGGCTGGTATCTGTGATCAACAG  
 CAGCATCTGTGCAGACTTCAGCTCATGGACTGCCTTTCATAGGTCTGCTAGATGTGTACGGGTTTGAGTCA  
 TTTCTGACAACAGTCTGGAACAGTTGTGCATCAATTATGCCAATGAGAAGCTACAGCAGCACTTCGTGG  
 CTCACTACCTCAGGGCCAGCAGGAGGAATATGAAGTTGAGGGCCTGGAGTGGTCAATTTGTCAACTACCA  
 GGACAACCAGACCTGTTTAGATCTCCTCGAAGGGAGCCCATCAGCATCTGTTCCCTATAAATGAGGAA  
 TGCCGCCCTAACCGTCCGAGCAGTGCAGCACAACACAGACACGCATTGAGAGCACGCTGGCAGGCAGGC  
 CCTGCCTGGGCCATAACAAGCTCAGCCGGGAGCCAGCTTTGTGGTGATGCATTTTCGAGGACCTGTACG  
 GTACTGCACAGCGGGCCTAGTGGAAAAGAACAAGGACCCTGTTCCCTGAGCTGACTGGCTCCTGCAG  
 CAATCCCAAGACCCCTGCTCATGATGCTGTTTCTGCTAACCTGAAGAGAAGCCAGGAGGAGCTGT  
 CTGGCCAGAGCAGGGCTCCTGCATTGACTGTGGTGTCCAAGTTCAGGCCCTCACTGGAACAGCTCCTGCA  
 GGTCTGCATAAAAACAACCCCACTACATTTCGCTGCATCAAGCCCAACAGCCAGAGTACGCCGAGACT  
 TTCTCCAGGAAGAGGTCTGAACCAAGTTAGAGGCTGTGGTCTTGTGGAGACCATCCACATCAGTGCTG  
 CTGGCTTTCCATCCGGGTCTCTCACCAGAACTCATGGAAGATATAAATTGCTAACAAGACTCCGACC  
 TCGTACATCCTCTGGCCTCAGGAGCCTGTGCTGCCAAAGGGTCTCTGAGCAGCCTCTGTGTGCCAAG  
 GAGGCCACACTGCAGCCTCTACTACAGGACATTCTCCATGCTCTGCCAGCTTTAATTCAGACAGCAACCA  
 CTCCCAGTGACCCAGCTAAGACTGCACAAATCCCACTATACTGTGGCAGGACAAAAGATTTTCATGACTGA  
 CTCCATGCTAGAGCTTCTGGAATGTGGGCTGCCAGATGCTAGAGCAGTGTGCCGCTGCATCCAGTGT  
 GGCTGGAGGCGACACCGCTCCAAAAGCAGGAGAAGCAGAGGCGGGCGGCGGTGATCATTAGGCAGCTT  
 TTCGCTCTGGTTAACTCGGAAACACATCAGAAGTTACACATAGCTGCCACAGTCATCAAGCACGCATG  
 GCATAAGTGGAGAATCAGAATGGCTGTCTTGCCTCTAAAGAACTGGATGGTATGGAGGAAAACTCATG  
 CCTCAGGCTCCCGGTACCCTGCTTCTCGCTGTCCCCAGCACACACTAGGTTCTGGGAGCAATAATCC  
 ACCTCTGGCCCTGGGACTGGTGTAGCCAACTCAGCTGATGGCATGCGTGGCTTTCAGAGGAACTGGT  
 AGCCCATGCTGCCTTCGGCTTCCCGCAAGCGGCCCCAGCAACAAAGTCCAGACACCACAACAAGATCAG  
 GCTGGTATCACATCCATCAGAGCACTGCCCGAGGCTCAATAAAGTTCCTGCAAGGAAGTCTCCACTTC  
 AGTATGCTGACATCTGCCCTGACCCTTACGCTTCAATGTTACTGGCTTAAATCAGATTCTGCTGCTAGA  
 AAGACACAGGCCAGTCCAAGTG

**ACGCGT**ACGCGGCCGCTCGAGCAGAACTCATCTCAGAAGAGGATCTGGCAGCAAATGATATCCTGGATT  
 ACAAGGATGACGACGATAAGGTTTAA

Protein Sequence: >RR217370 representing NM\_001163736  
 Red=Cloning site Green=Tags(s)

MHQVNGHSLGSDTQGRSLKGDLEFLGGVPLHLQDDLTKNVPTLETVLRCLQARYTEDIFYTNAGC  
 TLVALNPFKHIPQLYAPELMQEYHAAPQPQKLKPHIFTVGEQTYRNVKSLIEPINQSIIVSGESGAGKTW  
 TSRLCMKFYAVVAASPTSCENHKMAERIEERILNSNPVMEAFGNACTLRNNSSRFKGFIIQLQLNRAQQM  
 TGAAVQTYLLEKTRVACQAASERNFHIFYQICKGATKEERLQWCLPEGTAFSWLPNPESSEEDCFEVTR  
 EAMLHLGIDTPTQNNIFKVLAGLLHLGNVHFVDEDEAQCQLMDGTGKSVRTSALLLQLPDNMLLESMQ  
 IRTIKAGKQQVFQKPCSRACDTRRDCLAKLIYARLFDWLVSVINSSICADFSSWTAFIGLLDVYGFES  
 FPDNSLEQLCINYANEKLQHFVAHYLRAQQEYEVGLEWSFVNYQDNQCLDLLEGSPISICSLINEE  
 CRLNRPSSAAQLQTRIESTLAGRPCLGHNKLREPSFVVMHFAGPVRYCTAGLVEKNKDPVPELTGLLQ  
 QSQDPLMLLFPANPEEKQEELSGQSRAPALTVVSKFKASLEQLLQVLHKTTPHYIRCIPNSQSQPQT  
 FLQEEVLNQLEACGLVETIHI SAAGFPIRVSHQNFMEYKLLTRLRPTSSGLRSLCPAKGSSEQPLCAK  
 EATLQPLLQDILHALPALIQATTPSDPAKTAQIPLYCGRTKIFMTDSMLELLECGRAQMLEQCARCICQ  
 GWRRHRLQKQEKORRAAVIIQAAFRSWLTRKHIRRLHIAATVIKHAHWKWRIRMACLASKELDGMEEKLM  
 PQAPGTLRSSLSPAHTRFLGAIHLPGLVLANADGMRFQRKLVHAACLRLPASGSPNKVQTPQQDQ  
 AGITSIRALPQGSIKFHCRKSPLQYADICPDPSASNVTFGNQILLERHRPVQV

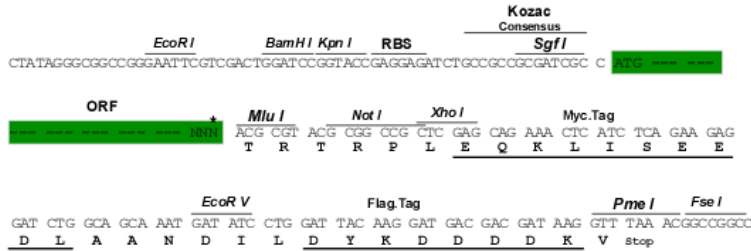
TRTRPLEQKLI SEEDLAANDILDYKDDDDKV

Restriction Sites:

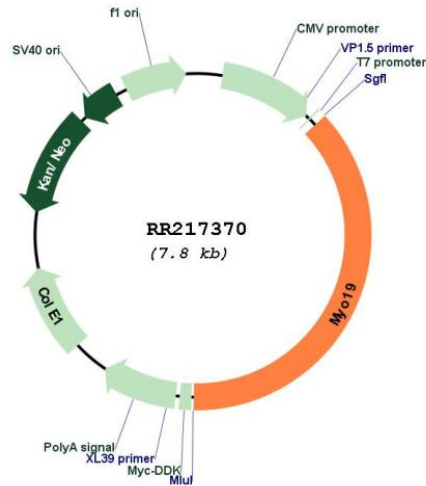
SgfI-MluI

Cloning Scheme:

Cloning sites used for ORF Shuttling:



\* The last codon before the Stop codon of the ORF

**Plasmid Map:**


**ACCN:** NM\_001163736

**ORF Size:** 2892 bp

**OTI Disclaimer:** The molecular sequence of this clone aligns with the gene accession number as a point of reference only. However, individual transcript sequences of the same gene can differ through naturally occurring variations (e.g. polymorphisms), each with its own valid existence. This clone is substantially in agreement with the reference, but a complete review of all prevailing variants is recommended prior to use. [More info](#)

**OTI Annotation:** This clone was engineered to express the complete ORF with an expression tag. Expression varies depending on the nature of the gene.

**Components:** The ORF clone is ion-exchange column purified and shipped in a 2D barcoded Matrix tube containing 10ug of transfection-ready, dried plasmid DNA (reconstitute with 100 ul of water).

**Reconstitution Method:**

1. Centrifuge at 5,000xg for 5min.
2. Carefully open the tube and add 100ul of sterile water to dissolve the DNA.
3. Close the tube and incubate for 10 minutes at room temperature.
4. Briefly vortex the tube and then do a quick spin (less than 5000xg) to concentrate the liquid at the bottom.
5. Store the suspended plasmid at -20°C. The DNA is stable for at least one year from date of shipping when stored at -20°C.

**RefSeq:** [NM\\_001163736.1](#), [NP\\_001157208.1](#)

**RefSeq Size:** 3841 bp

**RefSeq ORF:** 2895 bp

**Locus ID:** 497974

**Cytogenetics:** 10q26

MW: 108.3 kDa