

Product datasheet for **RR217357**

Kcnq5 (NM_001134643) Rat Tagged ORF Clone

Product data:

Product Type:	Expression Plasmids
Product Name:	Kcnq5 (NM_001134643) Rat Tagged ORF Clone
Tag:	Myc-DDK
Symbol:	Kcnq5
Synonyms:	Kcnq5l
Vector:	pCMV6-Entry (PS100001)
E. coli Selection:	Kanamycin (25 ug/mL)
Cell Selection:	Neomycin



[View online »](#)

ORF Nucleotide Sequence:

>RR217357 representing NM_001134643
 Red=Cloning site Blue=ORF Green=Tags(s)

TTTTGTAATACGACTCACTATAGGGCGGCCGGGAATTCGTCGACTGGATCCGGTACCGAGGAGATCTGCC
 GCC**CGATCGCC**

ATGCCCGCCACCACGCGGGAGGAGAGGGCGGTGCCGCGGGCTCTGGGTGAGGAGCGCGCGCGG
 CGGCGGCGGGTGGGGGGCGCCGGGCAGCGGCATGAAGGATGTGGAGTCCGGCCCGGCAGGGTGTCTGCT
 GAACTCGGCGGCCCGCAGGGGCGACGGCCTGCTGCTGCTCGGCACCCGCGCGGGCGCTCGGCGGAGGC
 GGCGGGCGGCTTGAGAGAGAGCCCGGGGCAAGCAGGGGGCCGGATGAGCCTGCTGGGGAAGCCGCTCT
 CCTACACCAGCAGCCAGAGCTGTGCGGCAACGTCAAGTACCGGAGGGTGCAGAATACTGTACAACGT
 GCTGGAGAGACCCGCGGCTGGGCGTTCGCTACACGCGTTCGTTTTTCTCCTTGTTGGTTGCTTG
 ATTTTGTCACTGTTTTTACCATCCCTGAGCACACAAAGTTGGCTTCAAGTTGCCTTTAATTCTGGAGT
 TCGTGATGATCGTTGCTTTGGCTTGGAGTTCATCATTGAATCTGGTCTGCAGGTTGCTTTGCTGTTA
 TAGAGGATGGCAAGGAGACTGAGGTTTCTCGAAAGCCTTTCTGTGTTATAGATACCATTGTTCTTATC
 GCTTCAATAGCAGTTGTTTCTGCAAAAACCTCAGGGTAATATTTTCGCCACGTACAGCGCTCAGAAGTCTCC
 GGTTCCCTACAGATCCTGCGTATGGTGGCATGGACAGAAGGGGAGGGACCTGGAAGTTGCTGGGCTCCGT
 GGTTTACGCTCACAGCAAGGAATTAATCACAGCCTGGTACATTGGATTCTGTTCTTATTTTTTTCATCC
 TTCCTTGCTATCTTGTGGAAAAGATGCCAATAAAGAGTTTTCAACATATGCGGATGCTCTCTGGTGGG
 GCACAATTACACTGACAACCATTTGGCTATGGAGACAAAACACCCTAACTTGGCTGGGAAGATTGCTCTC
 TGCAGGCTTCGCCCTTCTTGGTATTTCTTTCTTTCGACTTCTGCTGGCATTCTTGGCTCAGGTTTTGCC
 TAAAAGTACAGGAACAGCACCCGAGAAGCATTGAGAAAAGAAGGAACCCAGCTGCCAACCTCATCC
 AGTGTCTGGCGTAGCTATGCAGCTGATGAGAAGTCGCTCCATCGCAACCTGGAAGCCACATGAA
 GGCTTGCACACCTGCAGCCCTACCAAGAAAGAACAAGGGGAGGCAGCAAGCAGTAAGTTCTGTAGTAAT
 AAGCAGAAGTTCTTCAAGATGTACACCTCACGGAAGCAGAGTCAAGAGCTGAGCTTTAAGGAGCGAGTGC
 GCATGGCTAGCCCAAGAGGCCAGAGCATTAAAGAGCAGACAAGCATCGGTAGGTGACCGGAGATCCCAAG
 CACTGACATCACTGCTGAGGGCAGCCCCACCAAGTGCAGAAGAGCTGGAGCTTCAACGACCGAACCCGC
 TTCAGGCCCTCACTACGCTCAAGAGTCCCAGCCGAGACGGTATAGACGCTGACACAGCCCTTGGA
 TTGACGACGTATACGATGAGAAAGGATGCCAGTGTGACGTGTCGGTGGAGGACCTCACCCACCCTCAA
 AACCGTATCCGAGCCATCAGAATCATGAAGTTTTCATGTTGCAAAGCGGAAGTTAAGGAAACATTACGC
 CCATATGATGTAAGGATGTCTTGGCAATACTCTGCTGGCCATCTGGACATGCTATGTAAGTAAAA
 GCCTTCAAACACGCGTTGATCAAATCTTGGAAAAGGACAAATCACATCAGATAAAAAGACCCGAGAGAA
 AATAACGGCAGAACACGAGACAACGACAGATGACCTCAGCATGCTGGGCCGAGTTGTGAAGGTTGAAAA
 CAGGTACAATCCATTGAATCCAAGCTGGACTGCTTGTGGATATCTACCAGCAGGTCTCCGAAAAGGCT
 CTGCTCCGGCCCTCACTCTGACGTCTTCCAGATCCCGCCCTTTGAATGTGAACAGACCTCTGACTATCA
 AAGTCCCGTGGAGAGCAAAGACCTGTGAGCTCCGCGCAAAACAGTGGCTGCTTAAAGCAGGTGAGCCAGT
 GCCAATCTCAAGAGCCCTGCAGTTCATCCTAACGCCAAATGAGTTCAGTGGCCAGACTTTCTACGCGC
 TTAGCCCTACTATGCACAGCCAACTACACAGGTGCCAATGAGTCAAAACGACGGCTCCTCCGTGGTGGC
 CACCAATAACCTTCAAACCAAATAAGCGCCGCAACCAAGCCAGCAGCTCCAACAACCTTACAGATCCCA
 CCTCTCTCAGCCATCAAGCATCTATCCAGGCCGGAACCCCTGCTGTCCAACCCCTGGCGTACAGG
 AGAGTATTTCTGACGTACCCACCTGCCTTGTGCTCCAAAGAAAACGTTTCAGTTCGCCAGTCAAACCT
 GACCAAGGACCGTTCCCTGAGGAAAAGTTTTGACATGGGAGGGGAAACTCTGTTGTCCGTCGCCCCATG
 GTGCCAAGGACTTGGGCAAACTCTGTCTGTACAAAACCTGATCAGATCGACAGAGGAACTGAACCTTAC
 AGTTTTCGGGCAGTGAAGTGGCTCTCGAGGAGCAAGATTTTTATCCCAAGTGGAGAGAATCCAA
 ATTGTTTATACTGATGAGGAGTCCGTGCCGAGGAGACAGAAACAGATACTTTTGACGGCACCCACCG
 CCTGCCGGGAAGCTGCTTCTCATCAGATTCTAAGGACTGGAAGGTACGGTCTCAGAACATTT
 GTAAGACGGGAGACAGTACGGATGCCCTCAGTTTGCCTCAGTCAAACCTGAAC

AG**CGGACCG**ACGCGTACGCGGCCGCTCGAGCAGAACTCATCTCAGAAGAGGATCTGGCAGCAAATGATATCC
 TGGATTACAAGGATGACGACGATAAGGTTTAA

Protein Sequence: >RR217357 representing NM_001134643
 Red=Cloning site Green=Tags(s)

MPRHHAGGEEGGAAGLWVRSGAAAAAGGRRPGSGMKDVESGRGRVLLNSAAARGDGLLLGTRAAALGGG
 GGGLRESRRGKQGARMSLLGKPLSYTSSQSCRRNVKYRRVQNYLYNVLERPRGWAFVYHAFVLLVFGCL
 ILSVFSTIPEHTKLASSCLLILEFVMIIVVFGLEFIIRIWSAGCCCRYRGWQGLRFARKPFVIDITVLI
 ASIIVVSAKTQGNIFATSALRSLRFLQILRMVMDRRGGTWKLLGSSVYAHSKELITAWYIGFLVLISS
 FLVYLVEKDANKEFSTYADALWWTITLTTIGYGDKTPLTWLGRLLSAGFALLGISFFALPAGILGSGFA
 LKVQEQRQKHFEKRRNPAANLIQCVRWSYAADEKSVSIATWPKPHLKALHTCSPTKKEQGEAASSKFCNS
 KQKFFRMYTSRKQSQKLSFKERVMSAPRGQSIKSRQASVGDRRSPSTDITAEGSPTKVQKSWSFNDRTR
 FRPSLRLLKSSQPKTVIDADTALGIDDVYDEKGCQCDVSVEDLTPPLKTVIRAIRIMKFHVAKRKFETLR
 PYDVKDVEIQYSAGHLDMLCRIKSLQTRVDQILGKGQITSDKKSREKITAETHETDSDLMLGRVVKVEK
 QQVSIKSLDCLLDIYQVLRKGSASALTLTSFQIPPECEQTSYQSPVESKDLSSSAQNSGCLSRAS
 ANISRLQFQILTPNEFSAQTFYALSPTMHSQTTQVPMSONDSSVATNNLANQISAAPKPAAPTLLQIP
 PPLSAIKHLSRPELLSNPPGVHESISDVTTCLVASKENVQFAQSNLTKDRSLRKSFDMGGETLLSVRPM
 VPKDLGKSLVQNLIRSTEELNLQFSGSESSGSRGSQDFYPKWRESKLFITDEEVGAETETDTFDGTPP
 PAGEAAFSSDSLRTGRSRSSQNICTGDSTDALSLPHVKLN

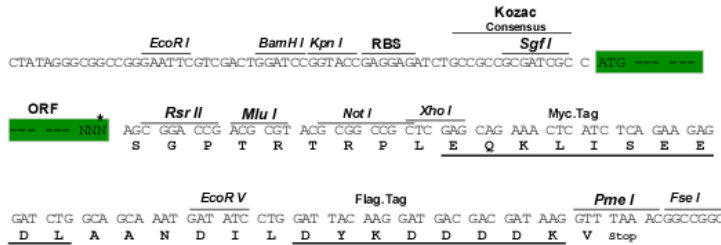
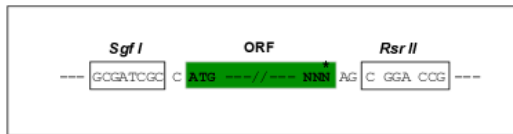
SGPTRTRPLEQKLISEEDLAANDILDYKDDDDKV

Restriction Sites:

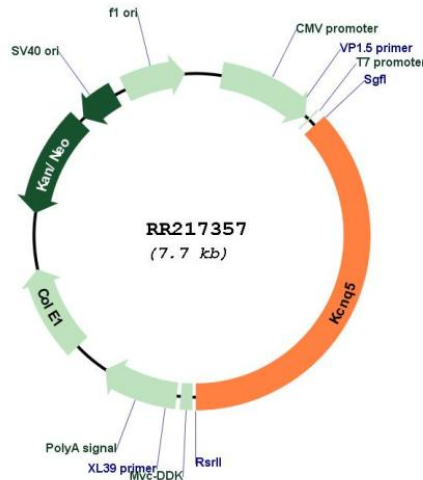
SgfI-RsrII

Cloning Scheme:

Cloning sites used for ORF Shuttling:



* The last codon before the Stop codon of the ORF

Plasmid Map:


ACCN: NM_001134643

ORF Size: 2853 bp

OTI Disclaimer: The molecular sequence of this clone aligns with the gene accession number as a point of reference only. However, individual transcript sequences of the same gene can differ through naturally occurring variations (e.g. polymorphisms), each with its own valid existence. This clone is substantially in agreement with the reference, but a complete review of all prevailing variants is recommended prior to use. [More info](#)

OTI Annotation: This clone was engineered to express the complete ORF with an expression tag. Expression varies depending on the nature of the gene.

Components: The ORF clone is ion-exchange column purified and shipped in a 2D barcoded Matrix tube containing 10ug of transfection-ready, dried plasmid DNA (reconstitute with 100 ul of water).

Reconstitution Method:

1. Centrifuge at 5,000xg for 5min.
2. Carefully open the tube and add 100ul of sterile water to dissolve the DNA.
3. Close the tube and incubate for 10 minutes at room temperature.
4. Briefly vortex the tube and then do a quick spin (less than 5000xg) to concentrate the liquid at the bottom.
5. Store the suspended plasmid at -20°C. The DNA is stable for at least one year from date of shipping when stored at -20°C.

RefSeq: [NM_001134643.2](#), [NP_001128115.2](#)

RefSeq Size: 3807 bp

RefSeq ORF: 2856 bp

Locus ID: 259273

Cytogenetics: 9q13

MW: 104.7 kDa