

## Product datasheet for **RR217308**

### Usp33 (NM\_001191094) Rat Tagged ORF Clone

#### Product data:

Product Type:	Expression Plasmids
Product Name:	Usp33 (NM_001191094) Rat Tagged ORF Clone
Tag:	Myc-DDK
Symbol:	Usp33
Vector:	pCMV6-Entry (PS100001)
E. coli Selection:	Kanamycin (25 ug/mL)
Cell Selection:	Neomycin



[View online »](#)

**ORF Nucleotide Sequence:**

>RR217308 representing NM\_001191094  
 Red=Cloning site Blue=ORF Green=Tags(s)

TTTTGTAATACGACTCACTATAGGGCGGCCGGAATTCGTCGACTGGATCCGGTACCGAGGAGATCTGCC  
 GCC**GCGATCGCC**

ATGACGACTTTTCGAAATCATTGTCACATTTGGATTGAGTTGGTAAATACAAAAGAGGATTTGATAC  
 AAAAATCTCATGGTGCTTGTGTCAGGACTGTAAAGTCAGAGGACCAACCTGTGGGCATGCCTAGAGAATAG  
 GTGTTCTATGTTGGCTGCGGGGAGTCACAAGATCATAGCACCATACACTCGAAGAAGACAAAGCATTAT  
 CTAAGTGTGAACCTCACCACCCTTCGAGTATGGTGTATGCTTGCAGCAAAGAAGTATTCTTGGATAGAA  
 AATTAGGAACTCCTCCTTATTACCTCATGTAAGACAGCCTCAACAAACACAAGAAAACAGTGTCCAGGA  
 TTTTAAAATACCCAGTAATACAGCATTGAAAACCCCTCTGGTTGCTGATTTGAAGATCTGGATATAGAA  
 GTGGAAGAGGAAGATGAGCTGAAGGCTAGAGGCCTGACAGGTTTAAAAACATTGGAAATACTTGTCTATA  
 TGAATGCCGCTCTGCAAGCTCTCTAACTGCCACCTTTGACACAGTTCTTTCTTGATTGTGGAGGACT  
 GGCTAGAACAGATAAGAAACCAGCCATTTGTAAGTTATCTCAAATAATGACAGAATTGTGGCACAAG  
 AGCAGGCCAGGATCTGTTGTGCCTGCTAATCTGTTCCAAGGAATTAACCTGTAATCCTCAACTTTTCGAG  
 GCTATTCTCAGCAGGATGCCAGGAATTCCTTCGCTGTTAATGGATCTGCTTATGAAGAGTTGAAGGA  
 GCAGGTCATGAAATAGAGGAAGAGCCTCAAGCACTAACTTCTGAGGAGACAGTGGAGGAAGAGAAGAGC  
 CAGTCAGATGTGGATTTTCAGTCTGCGAGTCACTGTAGCAGCAGCAGTGAAGAAAGGGGAAAATGAGAGTG  
 TCTCTAAGGGCGGCCCTGAAGACAGCACTGAGACCACCATGCTCATTGAGGATGAGGAGGACCTAGAGAT  
 GGCCAAAGACTGGCAAAAAGAGAAGATGTGAACAAGAGCAACAAAGCAGATTCTGACGGAGAACCAGGAT  
 AAAGACAGAGACACGGTGTGTGAACAGTTGACCTAACAGCCAGGAGACCGTCAAGGTGCAGATACACG  
 GCAGAGCCTCAGAATATATCACTGATGTCCATTTGAATGACCTATCTACACCACAGATCCTCCATCAAA  
 TGAAGTGTAAATCCACGTTTATCAGCAAGTCTCCTAAGTCAGGCAATCTGTGGCCAGGATTGACACCT  
 CCACACAAGAAAGCTCAGTCTTCTCCTCAAGAGGAAAAGCAGCATAAGAAAGTACAGAAGTGTATCT  
 CTGACATATTTGATGGGACAATCATTAGTTCAGTACAGTGTCTGACGTGTGATAGGGTGTCTGTAACCT  
 CGAGACCTTTTCAGGATCTGCTCTGCGGATTCCTGGCAAGGAAGACCTGGCTAAGCTGCACTCCTCCAGT  
 CACCCAACTATAGTCAAAGCAGGGTGTGTGGCGAAGCCTACGCTCCACAGGGTGGATAGCTTTCTTCA  
 TGGAGTACGTGAAGAGCTGGTTTTGGGGTCCAGTAGTAACCTTGAAGATTGTCTTGCTGCCTTCTTCGC  
 CAGAGATGAACCTAAAGGTGATAATATGTACAGTTGTGAAAAATGCAAAAAGTTGAGGAATGGAGTAAAG  
 TTTTGTAAAGTACAAAAGTTTCTGAGATTTTGTGTATCCACCTAAAAGATTTTCGACATGAACCTGATGT  
 TTTCCACCAAAATTAGCACCCATGTTTCTTCCCCTGGAAGGCCTGGACCTTCAGCCATTTCTTGCAAA  
 GGATAGCCAGCTCAGATCGTGACATATGATCTCCTGTCACTCATCTGTATCATGGGACTGCAAGTAGT  
 GGGCACTACATTGCCTACTGCAGAAACAATTTAAATAACCTGTGGTATGAGTTTGTGATGACCAGAGCGTCA  
 CTGAAGTTTCAGAGTCCACCGTACAGAAATGCCGAAGCCTACGCTCTTTTCTACAGGAAGAGCAGTGAAGA  
 GGCACAAGGGGAGAGGCGAAGGATATCCAATTTGTTGAACATAATGGAGCCAAGCCTCCTTCAGTTCTAT  
 ATATCTCGACAGTGGTTGAATAAATTTAAGACCTTTGCTGAACCTGGCCCTATTTCAAATAATGACTTTC  
 TCTGTATTCATGGAGTATTCTCCACGAAAAGCAAGTTATATTGAAGACTTAGTTTTGATGCTGCCTCA  
 GAACATTTGGGATAACCTCTACAGCAGGTATGGAGGAGGGCCTGCTGTCAACCACCTCTACATTTGTCAC  
 ACTTGCCAAATGAGGCAGAGAAGATTGAAAAACGAAGAAAAACTGAATTGGAAATTTTTATTTCGGCTCA  
 ACAGAGCATTTCAAGAGGAAGACTCTCCAGCTACTTTTTACTGTATCAGCATGCAGTGGTTAGAGAATG  
 GGAGAGTTTTGTAAAGGATCCTCCAGGTCCAATAGACAACACTAAAATTGCAGTCACTAAGTGTGGTAAT  
 GTGATGCTCAAGCAAGGAGCAGATTCTGGTCAAATTTTCAGAAGAAACATGGAATTTCTGCAATCTATAT  
 ATGGTGGGGACCTGAAGTTATCCTCCGACCTCCAGTTGTTTCATGTTGACCCTGATGCACATAACAGCAGA  
 GAAAAGATTGAAGTAGAAACTCGCTCTTTG

**ACGCGT**ACGCGGCCGCTCGAGCAGAACTCATCTCAGAAGAGGATCTGGCAGCAATGATATCCTGGATT  
 ACAAGGATGACGACGATAAGGTTTAA

**Protein Sequence:** >RR217308 representing NM\_001191094  
Red=Cloning site Green=Tags(s)

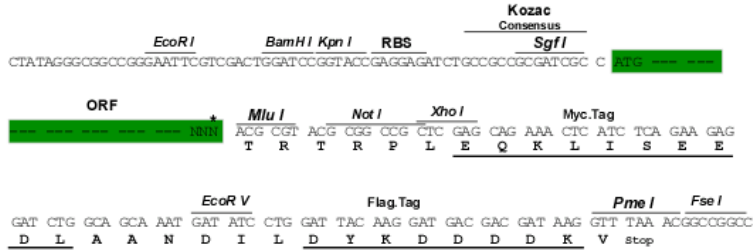
MTTFRNHCPHLDSVGEITKEDLIQKSHGACQDCKVRGPNLWACLNRCSYVGGESQDHSTIHSKTKHY  
LTVNLTTLRVWCYACSKEVFLDRKLGTPPSLPHVRQPQQTQENSVQDFKIPSNTALKTPLVAVFEDLDIE  
VEEDELKARGLTGLKNIGNTCYMNAALQALSNCPPLTQFFLDCGGLARTDKKPAICKSYLKMTELWHK  
SRPGSVVPANLFQGIKTVNPTFRGYSQQDAQEFLRCLMDLLHEELKEQVMEIEEEPQALTSEETVEEEKS  
QSDVDFQSCESCSSSEKGENESVSKGGPEDSTETTMLIQDEEDLEMAKDWQKEKMCNKSNKADSDGEPD  
KDRDTCETVDLNSQETVKVQIHGRASEYITDVHLNDLSTPQILPSNESVNPRLSASPPKSGNLWPLTP  
PHKKAQSSSPKRKKQHKKYRSVISDIFDGTIISSVQCLTCDRVSVTLETQDL SLP I P G K E D L A K L H S S S  
HPTIVKAGSCGEAYAPQGWIAFFMEYVKSFWGPPVTLQDCLAFFARDELKGDNMYSCEKCKLRNGVK  
FCKVQKFPEILCIHLKRFRHELMFSTKISTHVSFPLEGLDLQPFLAKDSPAQIVTYDLLSVICHHTASS  
GHYIAYCRNNLNLWYEFDDQSVTEVSESTVQNAEAYVLFYRKSSEEQRERRRISNLLNIMEPSLLQFY  
ISRQWLNKFKTFAEPGPISNNDFLCIHGGIPPRKASYIEDLVLMLPQNIWDNLYSRYGGGPAVNHLIYICH  
TCQIEAEKIEKRRKTELEIFIRLNRAFQEEDSPATFYCISMQWFREWESFVKDPPGPIDNTKIAVTKCGN  
VMLKQGADSGQISEETWNFLQSIYGGGPEVILRPPVVHVDPDALQAEKIEVETRSL

TRTRPLEQKLISEEDLAANDILDYKDDDDKV

**Restriction Sites:** Sgfl-Mlul

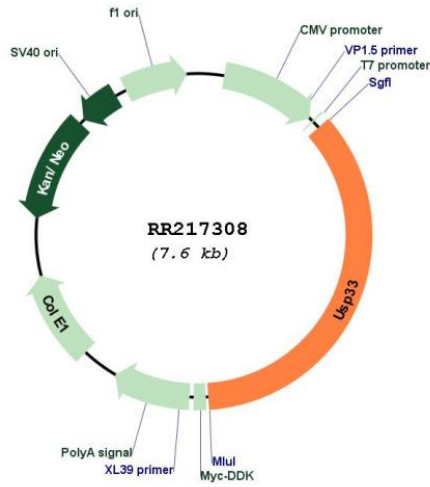
Cloning Scheme:

Cloning sites used for ORF Shuttling:



\* The last codon before the Stop codon of the ORF

Plasmid Map:



<b>ACCN:</b>	NM_001191094
<b>ORF Size:</b>	2691 bp
<b>OTI Disclaimer:</b>	The molecular sequence of this clone aligns with the gene accession number as a point of reference only. However, individual transcript sequences of the same gene can differ through naturally occurring variations (e.g. polymorphisms), each with its own valid existence. This clone is substantially in agreement with the reference, but a complete review of all prevailing variants is recommended prior to use. <a href="#">More info</a>
<b>OTI Annotation:</b>	This clone was engineered to express the complete ORF with an expression tag. Expression varies depending on the nature of the gene.
<b>Components:</b>	The ORF clone is ion-exchange column purified and shipped in a 2D barcoded Matrix tube containing 10ug of transfection-ready, dried plasmid DNA (reconstitute with 100 ul of water).
<b>Reconstitution Method:</b>	<ol style="list-style-type: none"><li>1. Centrifuge at 5,000xg for 5min.</li><li>2. Carefully open the tube and add 100ul of sterile water to dissolve the DNA.</li><li>3. Close the tube and incubate for 10 minutes at room temperature.</li><li>4. Briefly vortex the tube and then do a quick spin (less than 5000xg) to concentrate the liquid at the bottom.</li><li>5. Store the suspended plasmid at -20°C. The DNA is stable for at least one year from date of shipping when stored at -20°C.</li></ol>
<b>RefSeq:</b>	<a href="#">NM_001191094.1</a> , <a href="#">NP_001178023.1</a>
<b>RefSeq Size:</b>	3637 bp
<b>RefSeq ORF:</b>	2694 bp
<b>Locus ID:</b>	310960
<b>Cytogenetics:</b>	2q45
<b>MW:</b>	101.5 kDa