

Product datasheet for **RR217306**

Dag1 (NM_053697) Rat Tagged ORF Clone

Product data:

Product Type:	Expression Plasmids
Product Name:	Dag1 (NM_053697) Rat Tagged ORF Clone
Tag:	Myc-DDK
Symbol:	Dag1
Vector:	pCMV6-Entry (PS100001)
E. coli Selection:	Kanamycin (25 ug/mL)
Cell Selection:	Neomycin



[View online »](#)

ORF Nucleotide Sequence:

>RR217306 representing NM_053697
 Red=Cloning site Blue=ORF Green=Tags(s)

TTTTGTAATACGACTCACTATAGGGCGGCCGGAATTCGTCGACTGGATCCGGTACCGAGGAGATCTGCC
 GCC**CGCATCGCC**

ATGTCTGTGGACAACTGGCTACTGCACCCCTCTGGGACAGACCTTTCTCCTCTACTGTCTGTGGCTG
 TGGCTCAAGCCCACTGGCCAGTGAACCCCTCAGAGGCTGTGAGGGACTGGAAGAACCAGCTTGAGGCGTC
 CATGCACTCAGTTCTCTCGGACTTCCAGGAGGCTGTTCCACCCTGGTTGGCATCCAGATGGCAGCGCT
 GTTGTGGGGCTCATTCCGAGTGAACATTCCAACAGATTTAATTGCCTCCAGTGGAGAAATATCAAGG
 TGTCTGCAGCAGGAAGGAGGCCCTGCCGCTCTGGCTACACTGGGATCCACACAGTCATATTTGGAAGG
 CCTTCTCTTGACACTGATAAAGGTGTCCATTACATCTCAGTGAAGTGTGCACGCCTGGGAGCAAATGGA
 AGCCACGTGCCGAGACGCCAGCGTGTCTCTATTGAGGTCTACCCTGAAGACCACAGTGAAGCCACAGT
 CTGTCCGGGCAGCCTCATCAGACCCTGGTGAAGTGTGTCATCTGCTTGTGCAGCTGATGAGCCAGTGAC
 TGTCTTACAGTGATTCTGGATGCTGACCTCACCAAGATGACCCAAAGCAAAGGATTGATCTACTGAAC
 AGAATGCAGAGCTTCTCAGAAGTGAACCTAACCAATGAAGTTGGTGCCTGTAGTCAATAATAGACTAT
 TTGACATGTCAGCCTTATGGCTGGCCAGGAAATGCAAAGAAAGTGGTAGAATGGGGCTCTGCTGTC
 CTGAAACTAGGGTGTCTTGAATCAGAATAGCGTCCCTGACATCCGCGGTGTAGAAACCCCTGTAGG
 GAGGGTACCATGTCTGCCACCTTGTTATCCTGTGGTGGTTGGCACATTGCCAATAAGAAGCCCACTC
 TCCCAACGAATCCGGAGGCAGATCCATGCCACTCTACACCTGTTACTGCCATTGGACCCCAACTAC
 CGCCATTCAGGAGCCACCATCTAGGATAGTGCCTACTCCACATCTCCAGCCATTGCACCTCCAACAGAG
 ACCATGGCTCCTCTGTAGGGATCCTGTCCCAGGAAGCCACGGTACCATTCCGACTCGAGGTGCCA
 TTATTCAGACCCCAACTCTGGGCCCTATCCCTCTACTCGGGTGTGAGAAGCTGGTACCAGATTCTCTGG
 CCAGATTCGCCCAACACTGACAATTCTGGTTATGTAGAGCCACAGCAGTTGTTACTCCTCCAACAACCT
 ACCACAAGAAGCCACGAGTATCTACGCCAAAACCAGCAACGCCTTCAACTGATTCGTCAACTACCACA
 CTGAAGGCCAACCAAAAAACCACGACACCCGACCAGTGCCTCCGGTCAACCAAGACCCGATCAC
 CAGATTGGAGACCGCTTCCCAACCACTCGAATCCGCACTACCACAGTGCAGTGCCTCCGTTGGGGAGAA
 GCTAACACGCGGCAGAGCTTAAGAACCACATCGACAGGGTTGATGCCTGGGTAGGAACCTACTTTGAGG
 TAAAGATTCCATCAGACACCTTCTATGACAATGAGGACACCACTACGGACAAGCTCAAGCTGACCCTGAA
 GCTGCGAGAGCAGCAGTTGGTAGGTGAGAAATCTTGGGTTCAAGTTAACAGCAACAGCCAGCTCATGTAT
 GGTCTGCCTGACAGCAGCCATGTCCGAAAACATGAGTATTTTCATGCACGCCACGGACAAAGGGGCTTT
 CTGCTGTGGATGCCTTCGAGATCCATGTTCAAGCGCCACAAGGGGACAAAGCTCCCGCGGATTCAA
 GGCCAACTTGCAGGGGATCCCGCACCTGTGGTGAACGATATCCACAAGAAGATCGCTTTGGTAAAGAAG
 CTGGCTTTTGCCTTTGGGGATAGGAACTGCAGCTCCATCACCCCTCAGAACATCACCCGGGGCTCTATTG
 TGGTCGAGTGGACCAACAACACTCTGCCCTGGAGCCCTGCCCAAGGAGCAGATCGTAGGGCTGAGCCG
 CAGGATTGCTGATGAAAACGGGAAGCCTCGTCTGCCTTCTCCAATGCTCTGGAGCCTGACTTCAAGGCT
 CTGAGTGTGCTGTGGCGGGCTCTGGCAGTTGTGGCACCTCAATTTATCCCGTGGCACCACCCTCTC
 CTGGAACCTCAGCAGCACCGGCCACAGAGGTTCCAGACAGGACCCTGAGAAGAGCAGTGAAGTGAAGT
 TTAAGTGCACACAGTCACTCCAGCTGTTGTGGTTGCAGCCATCCTGCTCATTGCTGGAATCATTGCTATG
 ATCTGCTATCGCAAGAAGAGGAAGGGCAAACCTGACCCTGGAGGACCAGGCCACCTTTATCAAGAAGGGGG
 TGCTATTATCTTTCAGATGAGCTGGATGACTCTAAGCCCCGCTCTTCCAGCATGCCGCTCATCCT
 GCAGGAAGAGAAGGCTCCCTCCCTCCTCTGAGTACCCTAACCAAGAGTGTGCCGAGACCACTCCTCTG
 AACCAAGACTGTGGGAGAGTACACACCCCTGCGGGATGAGGATCCTAATGCACCTCCCTACCAGCCAC
 CCCCACCTTACAGCTCCCATGGAGGGCAAGGGCTCCCGTCCCAAGAACATGACCCCATACCGATCACC
 CCCTCCATATGTACCCCT

ACGCGTACGCGGCCGCTCGAGCAGAACTCATCTCAGAAGAGGATCTGGCAGCAAATGATATCTGGATT
 ACAAGGATGACGACGATAAGGTTTAA

Protein Sequence: >RR217306 representing NM_053697
 Red=Cloning site Green=Tags(s)

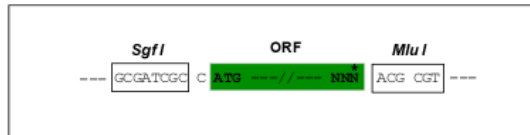
```
MSVDNLLHPLWGQTFLLLLSVAVAQAHWPSEPSEAVRDWKNQLEASMHSVL SDFQEAVPTVVGIPDGTA
VGRSFRVSIPTDLIASSGEI IKVSAAGKEALPSWLHWDPHSHILEGLPLD TDKGVHYISVSAARLGANG
SHVPQTASVFSIEVYPEDHSEPQSVRAASSDPGEVVSSACAADEPVTVLTVILDADLTKMTPKQRIDLLN
RMQSFSEVELNNMKLVPVNNR LFDMSAFMAGPGNAKKVVENGALLSWKLGCSLNQNSVPDIRGVETPAR
EGTMSAHLGYPVVGWHIANKKPTLPKRIRRIHATPTPVTAIGPPTTAIQEPPSRIVPTPTSPAIAPPE
TMAPPVRDPVPGKPTVTIRTRGAI IQTPTLGPIPPTRVSEAGTTVPGQIRPTLTIPGYVEPTAVVTPPTT
TTKKPRVSTPKPATPSTDSSTTTTRRPTKKPRTPRVPRVTTKAPITRLETASPPTRIRTTTSAVPRGGE
ANQRPELKNHIDRVDAWVGTYFEVKIPSDTFYDNEDTTT DKLKLTLKLR EQQLVGEKSWVQFNSNSQLMY
GLPDSSSHVGKHEYFMHATDKGGLSAVDAFEIHVHKRPQGDKAPARFKAKLAGDPAPVVNDIHKKIALVKK
LAFAFGDRNCSSITLQNI TRGSIVVEWTNNTLPLEPCPKEQIVGLSRRIADEN GKPRPAF SNALEPDFKA
LSVAVAGSGSCRHLQFIPVAPSPG TSAAPATEVPDRDPEKSEDDVYLHTVIPAVVVAAILLIAGIIAM
ICYRKKRKGKLTLEDQATFIKKGVP IIFADELDDSKPPSSS MPLILQEEKAPLPPPEYPNQSVPETTPL
NQDTVGEYTPLRDEDPNAPPYQPPPPFTAPMEGKSRPKNMTPYRSPPPYVPP
```

TRTRPLEQKLISEEDLAANDILDYKDDDDKV

Restriction Sites: Sgfl-Mlul

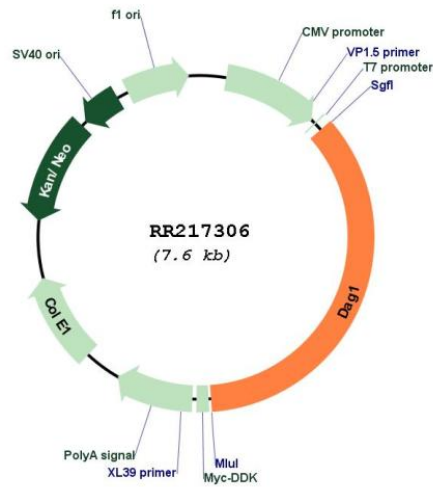
Cloning Scheme:

Cloning sites used for ORF Shuttling:



* The last codon before the Stop codon of the ORF

Plasmid Map:



ACCN:	NM_053697
ORF Size:	2679 bp
OTI Disclaimer:	The molecular sequence of this clone aligns with the gene accession number as a point of reference only. However, individual transcript sequences of the same gene can differ through naturally occurring variations (e.g. polymorphisms), each with its own valid existence. This clone is substantially in agreement with the reference, but a complete review of all prevailing variants is recommended prior to use. More info
OTI Annotation:	This clone was engineered to express the complete ORF with an expression tag. Expression varies depending on the nature of the gene.
Components:	The ORF clone is ion-exchange column purified and shipped in a 2D barcoded Matrix tube containing 10ug of transfection-ready, dried plasmid DNA (reconstitute with 100 ul of water).
Reconstitution Method:	<ol style="list-style-type: none">1. Centrifuge at 5,000xg for 5min.2. Carefully open the tube and add 100ul of sterile water to dissolve the DNA.3. Close the tube and incubate for 10 minutes at room temperature.4. Briefly vortex the tube and then do a quick spin (less than 5000xg) to concentrate the liquid at the bottom.5. Store the suspended plasmid at -20°C. The DNA is stable for at least one year from date of shipping when stored at -20°C.
RefSeq:	NM_053697.1 , NP_446149.1
RefSeq Size:	5169 bp
RefSeq ORF:	2682 bp
Locus ID:	114489
Cytogenetics:	8q32
MW:	96.7 kDa
Gene Summary:	laminin-binding glycoprotein involved in linking the extracellular matrix to the actin cytoskeleton [RGD, Feb 2006]