

Product datasheet for **RR217304**

Tnpo1 (NM_001100692) Rat Tagged ORF Clone

Product data:

| | |
|--------------------|---|
| Product Type: | Expression Plasmids |
| Product Name: | Tnpo1 (NM_001100692) Rat Tagged ORF Clone |
| Tag: | Myc-DDK |
| Symbol: | Tnpo1 |
| Vector: | pCMV6-Entry (PS100001) |
| E. coli Selection: | Kanamycin (25 ug/mL) |
| Cell Selection: | Neomycin |



[View online »](#)

ORF Nucleotide Sequence:

>RR217304 representing NM_001100692
 Red=Cloning site Blue=ORF Green=Tags(s)

TTTTGTAATACGACTCACTATAGGGCGGCCGGAATTCGTCGACTGGATCCGGTACCGAGGAGATCTGCC
 GCC**CGCATCGCC**

ATGGAGTATGAGTGGAACTGACGAGCAAGGGCTTCAGCAGATTCTGCAGCTGCTCAAGGAGTCCCAGT
 CCCAGACACCACCATCCAGAGGACCGTCAACAAAACTGGAACAACTTAATCAATATCCAGATTTTAA
 CAACTACTTAATTTTTGTTCTTACAAAAATAAAATCTGAAGATGAGCCACACGGTCATTGAGCGGTCTG
 ATCTTGAAGAACAATGTGAAAGCTCATTTTCAGAACTCCCGAACGGTGTGACGGACTTCATCAAGAGTG
 AATGTCTAAATAATTTGGGGACTCCTCTCCGCTGATCAGGGCCACTGTTGGTATTTAATTACGACCAT
 AGCCTCCAAGGGAGAAGTGCAGAATTGGCCTGACCTCTTACAAAACTCTGTAGCCTGCTGGATTCTGAA
 GACTACAACACCTGTGAGGGGCGATTCCGTCGCCCTTCAGAAGATATGTGAGGACTCCGCGGAGATTTAG
 ACAGCGATGTCTGGATCGCCCTCAACATCATGATCCCAAGTCTTACAGTTTTTCAAGCACAGTAG
 TCCAAAAATAAGGTCTCACGCTGTGTCATGTCAATCAGTTCATCATCAGTCGGACCCAAGCGCTCATG
 TTGCACATCGACTCCTTCATTGAGAACCTTTTGCAGTGGCTGGTACGAGGAAGCCGAGGTGCGGAAGA
 ACGTGTGCCGAGCGCTTGTGATGCTGCTGGAAGTCCGGATGGACCGTCTGCTGCCGCACATGCATAACAT
 AGTCGAGTACATGCTTCAGAGGACCCAAGACCAAGATGAGAATGTGGCTCTGGAGGCTGTGAATTTCTGG
 CTGACTTTGGCTGAACAGCCAATATGCAAAGATGTACTTGTAAAGGCATCTGCCTAAGTTGATCCCGTGT
 TAGTGAATGGCATGAAGTACTCAGATATAGACATCATCTGCTGAAGGGGGATGTTGAAGAAGACGAGGC
 CATCCCTGATAGTGAGCAGGATATACGGCCACGGTTCATCGCTCAAGGACGGTGGCTCAGCAGCATGAA
 GAGGATGGGATTGAAGAGGATGACGACGACGACGATGAGATTGATGATGACGATAACCATTTCTGACTGGA
 ATCTCAGAAAGTGTCTGCTGCTCGATGTTCTCGAAACGTTTATCGTGATGAGCTTTTGGCACA
 CATTTTGGCACTTTTGAAGAATTGCTTTTCCATCACGAGTGGTGTGAAAGAGTCTGGCATCTTGGTT
 TTAGGAGCAATTGCTGAAGTTCATGCAAGGCATGATCCGTACCTGCCGAGCTCATTCTCACCTCA
 TTCAGTGCCTTTCTGACAAAAAGGCTCTTGTGCGTTCCATCACCTGCTGGACTCTAAGCCGCTATGCACA
 CTGGGTAGTCAGCCAGCCACCAGATACATACCTGAAGCCATTAATGACGGAATTGCTGAAGCGTATCCTG
 GATAGCAACAAGAGAGTACAAGAAGCTGCTTGCAGTGCCTTTGCTACGTTAGAAGAGGAGGCTTGTACAG
 AGCTTGTCCCCTACCTTGCTTATATACTCGACACCCTCGTCTTCGCTTCAGTAAATACCAGCACAAGAA
 CCTGCTCATTCTGTACGATGCCATAGGGACACTAGCAGATTGAGTGGGACATCATTTAAACAAGCCAGAA
 TATATTCAGATGTAATGCCTCCTGATCCAGAAGTGAACATGTTAAAAGATGAAGACAAGGATCTTT
 TCCTTTACTTGAGTGCCTCTCATCTGTTGCCACAGCCTTGACAGTCTGGTTTCCTCCATATTGTGAACC
 TGTGTATCAGCGTTGTGTAACCTGGTACAGAAGACACTAGCACAAGCCATGCTAAACAATGCTCAGCCA
 GAACAATATGAAGCTCCAGATAAAGACTTTATGATTGTGGCTCTTGACTTACTCAGTGGCCTGGCTGAAG
 GACTGGGAGGCAACATTGAGCAGCTGGTGGCCGAAGTAAACATCCTGACACTGATGTATCAATGCATGCA
 GGATAAAATGCCCGAAGTTCGGCAGAGTCTTTTGCACTACTAGGTGATCTGACTAAAGCTTGCTTTTCAG
 CACGTTAAGCCTTGATAGCTGATTTTATGCCAATATTGGGAACCAATCTAAATCCAGAGTTTATTTTCAG
 TCTGCAACAACGCCACCTGGGCAATTGGGAAAATCAATTCAAATGGGCATAGAGATGCAGCCTTACAT
 CCCTATGGTGTGCACCAGCTCGTGGAGATCATTAAACAGACCCCAACACCCCAAGACGCTGTTGGAGAAC
 ACAGCAATAACAATTGGTCGTCTTGGTTACGTTTGTCTCAAGAGGTGGCCCCATGCTACAGCAGTTTA
 TAAGACCTGGTGTACCTCTCTGAGAAACATAAGAGACAATGAAGAAAAAGATTACGATTCCGTGGGAT
 TTGTACCATGATCAGTGTGAATCCTAGTGGCGTAATCCAAGATTTTATATTTTTTTGTGATGCTGTTGCA
 TCATGGATTAATCCCAAAGACGACCTCAGAGACATGTTCTGTAAGATCCTTCATGGATTTAAAAACCAAG
 TTGGGGATGAAAATTGGAGGCGATTCTCTGACCAGTTTCTCTTCCCTTAAAGAGCGTCTTGGCGCTT
 TTATGGTGT

ACGCGTACGCGGCCGCTCGAGCAGAACTCATCTCAGAAGAGGATCTGGCAGCAATGATATCCTGGATT
 ACAAGGATGACGACGATAAGGTTTAA

Protein Sequence: >RR217304 representing NM_001100692
Red=Cloning site Green=Tags(s)

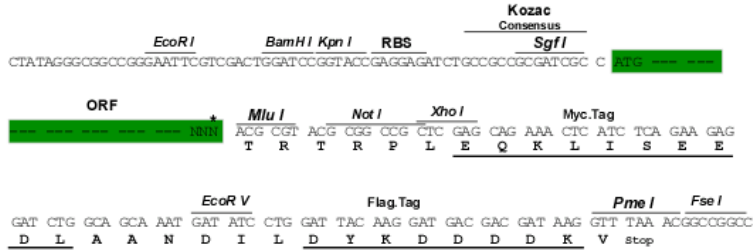
MEYEWKPDEQGLQQILQLLKEQSPDTTIQRVQKLEQLNQYPDFNNYLIFVLTKLSEDEPTRLSGL
ILKNNVKAHFQNFNGVDFIKSECLNIGDSSPLIRATVGILITTIASKGELQNWPDLLPKLCSLLDSE
DYNTCEGAFGALQKICEDSAEILSDVLDRLNIMIPKFLQFFKHSSPKIRSHAVACVNQFIISRTQALM
LHIDSF IENLFALAGDEEA E VRKNVCRALVMLLEVRMDRLLPHMHNIVEYMLQRTQDQDENVALEACEFW
LTLAEQPICKDVLVRHLPKLIPLVNGMKYSDIDIILLKGDVEEDEAIPDSEQDIRPRFHRSRVTAQQHE
EDGIEEDDDDDDEIDDDDTISDWNLRKCSAAALDVLANVYRDELLPHILPLLKELLFHHEWVYKESGILV
LGAIAEGCMQGMIPYLPPELIPHLIQCLSDKKALVRSITCWTL SRYAHWVVSQPPDTYLPKPLMTELLKRIL
DSNKRQVEAACSFAFATLEEEACTELVPYLAYILDTLVFAFSKYQHKNLLILYDAIGTLADSVGHHLNKPE
YIQMLMPPLIQKWNMLKDEDKDLFPLLECLSSVATALQSGFLPYCEPVYQRCVNLVQKTLAQAMLNNAQP
EQYEAPDKDFMIVALDLLSGLAEGGGNIEQLVARSNIL TLMYQCMQDKMPEVRQSSFALLGDLTKACFQ
HVKPCIADFMPILGTNLNPEFISVCNNAWAIGEISIQMGIEMQPYIPMVLHQLVEIINRPNTPKTLLN
TAITIGRLGYVCPQEVAPMLQQFIRPWCTSLRNIRDNEEKDSAFRGICTMISVNP SGVIQDFIFFCDAVA
SWINPKDDLDMFCKILHGFKNQVDENWRRFSDQFPLPLKERLAAFYGV

TRTRPLEQKLISEEDLAANDILDYKDDDDKV

Restriction Sites: Sgfl-MluI

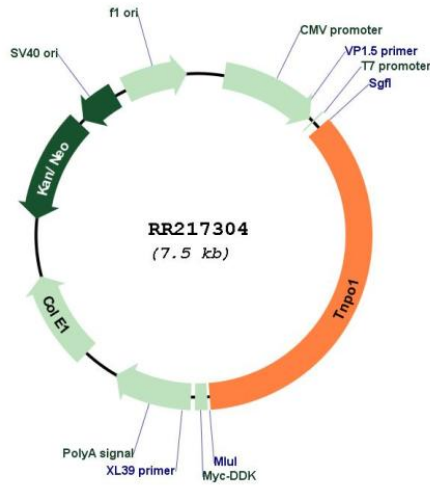
Cloning Scheme:

Cloning sites used for ORF Shuttling:



* The last codon before the Stop codon of the ORF

Plasmid Map:



| | |
|-------------------------------|---|
| ACCN: | NM_001100692 |
| ORF Size: | 2670 bp |
| OTI Disclaimer: | The molecular sequence of this clone aligns with the gene accession number as a point of reference only. However, individual transcript sequences of the same gene can differ through naturally occurring variations (e.g. polymorphisms), each with its own valid existence. This clone is substantially in agreement with the reference, but a complete review of all prevailing variants is recommended prior to use. More info |
| OTI Annotation: | This clone was engineered to express the complete ORF with an expression tag. Expression varies depending on the nature of the gene. |
| Components: | The ORF clone is ion-exchange column purified and shipped in a 2D barcoded Matrix tube containing 10ug of transfection-ready, dried plasmid DNA (reconstitute with 100 ul of water). |
| Reconstitution Method: | <ol style="list-style-type: none">1. Centrifuge at 5,000xg for 5min.2. Carefully open the tube and add 100ul of sterile water to dissolve the DNA.3. Close the tube and incubate for 10 minutes at room temperature.4. Briefly vortex the tube and then do a quick spin (less than 5000xg) to concentrate the liquid at the bottom.5. Store the suspended plasmid at -20°C. The DNA is stable for at least one year from date of shipping when stored at -20°C. |
| RefSeq: | NM_001100692.1 , NP_001094162.1 |
| RefSeq Size: | 8281 bp |
| RefSeq ORF: | 2673 bp |
| Locus ID: | 309126 |
| Cytogenetics: | 2q12 |
| MW: | 101.3 kDa |