

Product datasheet for **RR217291**

Dis3l2 (NM_001172159) Rat Tagged ORF Clone

Product data:

Product Type:	Expression Plasmids
Product Name:	Dis3l2 (NM_001172159) Rat Tagged ORF Clone
Tag:	Myc-DDK
Symbol:	Dis3l2
Synonyms:	RGD1560168
Vector:	pCMV6-Entry (PS100001)
E. coli Selection:	Kanamycin (25 ug/mL)
Cell Selection:	Neomycin



[View online »](#)

ORF Nucleotide Sequence:

>RR217291 representing NM_001172159
 Red=Cloning site Blue=ORF Green=Tags(s)

TTTTGTAATACGACTCACTATAGGGCGGCCGGAATTCGTCGACTGGATCCGGTACCGAGGAGATCTGCC
 GCC**CGCATCGCC**

ATGAACCATCCTGACTACAAGCTGAACCTTCAGTCTCCAGGGACTCCCAGAGGTGTGCCTCTGTGGTTG
 GCCCGAATGCTGTTGGTCTTCGCCAGGTGACAAAAAGTCAAAGAACAAGTCCATGCGAGGGAAGAAAA
 GAGCATATTTGAAACCTACATGTCCAAGGAGGATGTTTCAGAAGGCTTGAAGAAAGGAACGCTTATCCAG
 GGTGATTGAGGATCAATCCAAAGAAGTTTCATGAAGCCTTCAATCCTTCTCCGGATGGTATCGGGACA
 TTTTATTGATGGAGTTGTTGCTCGTAATAGAGCCTTAAATGGGGACCTTGTGGTTGAAAACTGCTTCC
 TGAGGACCAGTGGAAAGGAGTTAAACCAGAGAGCAACGACAAAGAAACAGAAGCTACTAATGAAACTGAC
 ATCTCTGAGGAGTCTGTGGACACCACCTTCTGCAGAAGTCCCCAAAAGGCTGGAATGGTCTGATGTTA
 TTATAGAGGCTCAGTTTATGACAGCGACTCAGAAGATAGACATGGCAACACCAGTGGGCTGGTTGATGG
 TATGAAGAAATTGTCAGTCTGTACTCCTGACAAAGGAAAAGAAGATTCTAGTGTCCAGTTATGAAAGAC
 GAGAACACCCCAAGTACAGGACACAAGAGCTTTATCAGAGAAGTCACTCCAGAAATCAGCAAAGGTGG
 TTTACATCTTGGAGAAAAGCATTCCCAGCAGCAACCGGCATCCTGAAACTCTTGGCTGACAAGAACAG
 TGACCTGTTTAAAGAAATATGCCCTGTTTTCTCCTTCAGACCACCGAGTACCTAGAATTTATGTACCACTC
 AAGGACTGTCCCAGGACTTCATGACCCGACCCAAAGACTATGCCAACACGCTGTTTATCTGCCGCATCA
 TAGACTGGAAGGAGGACTGTAATTTTGCCTGGGGCAACTGGCTAAGAGTCTTGGCAAGCTGGTGAAT
 TGAACCTGAAACAGAAGGATCCTGACAGAATATGGTGTGGACTTCTCTGATTTCTTTCAGAAGTTCTC
 GAATGTCTCCCTCAAAGCCTGCCATGGACAATTCACCTGAGGAGGTGGGCAAGAGAAGAGACCTAAGAA
 AAGACTGTATCTTACCATTGACCCATCAACTGCTCGAGACCTTGATGACGCCCTCCTGACAGGACCTCT
 CACTGACGGCACCTTCGAAGTGGCGTCCACATAGCCGATGTGAGTTACTTCGTTCTGAGGGATCCTCT
 TTGGATAAGGTAGCTGCTGAGAGAGCCACAAGTGTCTACTTGGTCCAGAAGGTGGTCCCATGCTTCCCA
 GGCTTCTGTGTGAGGAACTCTGCAGCCTCAACCCCATGACTGACAAGCTGACCTTCTGTGATCTGGAA
 GCTGACTCCTGAAGGCAAGATCCTTGGAGTGGTTTGGCCGACTATCATCCGTTCTTGCACCAAAATTG
 AGCTACGACCATGCGCAGAGCATGATCGAAAAATCCGACTGAGAAGATCCCCAAGGAAGAGCTTCCCCTA
 TTTCTCCAGAGCACAGCATCGAGGAGGTGCACCAGGCAGTCTGAACCTGCACAGCATTGCAAAGCAACT
 CCGCCGCCAGCGTTTGTAGATGGTGCCTCCGTTTATAGTACGCTGAAGCTTGTCTTCACTCTGGACCAT
 GAGACTGGATTGCCTCAAGGATGCATATCTATGAGTACCGAGACAGCAACAAGCTTGTAGAGGAGTTCA
 TGCTCCTGGCCAAACATGGCAGTGGCCACAAGATCTCCGCACCTTCCCTGAGCAGGCCCTGCTGCGCCG
 GCATCCCCACCCGAGACGAAGATGCTCAGTGACCTGGTGGAGTTCTGTGACCAGATGGGGCTGCCCATG
 GATGTCAGCTCTGCAGGGGCCCTAAATAAAAGCCTGACCAACACATTTGGAGATGACAAGTACTCTCTGG
 CCCGAAAGAGGTGCTCACCACATGACTCCCGCCCATGCAGATGGCACTGTACTTCTGCTCTGGGAT
 GCTGCAGGACCAGGCGCAGTTCGGCATTATGCTCTCAACGTTCCCCTTACACACACTTCACCTCTCCC
 ATCCGCGCTTTGCTGACGTCAATGTCACCGCCTCCTGGCTGCTGCTCTGGGCTACAGTGAAGCCAG
 ATGTGGAGCCTGATGCCCTACAGAAGCAAGCCGACCACTGCAATGACCGCCGATGGCCTTAAGCGTGT
 GCAGGAGCTCAGCATTGGCCTCTTCTCAATCTAGTAAAAGAGAGCGGCCCTGGAGTCTGAAGCC
 ATGGTGTGGGTGCTGTAACCAAGCTTTCGATGTGCTGGTACTGCGCTTTGGGGTACAAAAACGCATCT
 ACTGCAACGCACTGGCCTTGGGTCCTACCACTTCCAGAAGGTGGGAAGAAGCCAGAGCTCACTCTGT
 TTGGGAGCCAGATGACCTTGAAGAGGAGCCAATACAGCAGGTATCACCATCTTCAAGCCTGGTGGATGTG
 GTCCTGCAGGCAGAGGCCACAGCCCTCAAGTACAGTGTATCCTGAAGCGACCAGGCCCGGAGCATTCCC
 TGGGTCTGGAGAAGGAGTCTGATGAGGAGCCTGAGGAC

ACGCGTACGCGGCCGCTCGAGCAGAAACTCATCTCAGAAGAGGATCTGGCAGCAATGATATCCTGGATT
 ACAAGGATGACGACGATAAGGTTTAA

Protein Sequence: >RR217291 representing NM_001172159
 Red=Cloning site Green=Tags(s)

MNHPDYKLNLSQSPGTPRGVSSVVGPNVAVGASPGDKKSKNKSMRGKKKSFIFETYMSKEDVSEGLKKGTLIQ
 GVLRIINPKKFHEAFIPSPDGDRIIDVGVARNRNLNGDLVVVKLLPEDQWKGVPESNDKETATNETD
 ISEESCQHLLQKSPKGNWGPDIIEAQFDDSDSEDRHGNTSGLVDGMKLSVCTPDKGKEDSSAPVMKD
 ENTPKSQDTRALSEKSLQKSAAKVVYILEKKHSRAATGILKLLADKNSDLFKKYALFSPSDHRVPRIYVPL
 KDCPQDFMTRPKDYANTLFCRIIDWKEDCNFALGQLAKSLGQAGEIEPETEGILTEYGVDFSDFSSEVL
 ECLPQSLPWTIPPEEVGKRRDLRKDCIFITIDPSTARDLDDALSCRQLTDGTFEVGVHIAADVSYFVPEGSS
 LDKVAAERATSVYLVQKVPMLPRLCEELCSLNPMTDKLTFVSIWKLTPGKILEEWFGRITIRSCTKL
 SYDHAQSMIENPTEKIPKEELPPI SPEHSIEEVHQAVLNLHSIAKQLRRQRFVDGALRLDQLKLAFTLDH
 ETGLPQGCHIYEYRDSNKLVEEFMLLANMAVAHKIFRTFPEQALLRRHPPQTKMLSDLVEFCQDQMLPM
 DVSSAGALNKSLTNTFGDDKYSLARKEVL TNMYSRPMQMALYFCGMLQDQAQFRHYALNPLYTHFTSP
 IRRFADVIVHRLAAALGYSEQPDVDPALQKQADHCNDRRMASKRVQELSIGLFFSILVKESGPLESEA
 MYMGVLNQAFDVLVLRFGVQKRIYCNALALRSYHFQKVGKKPELTLVWEPDDLEEEPIQQVITIFSLVDV
 VLQAEATALKYSAILKRPGEHSLGLEKESDEEPEP

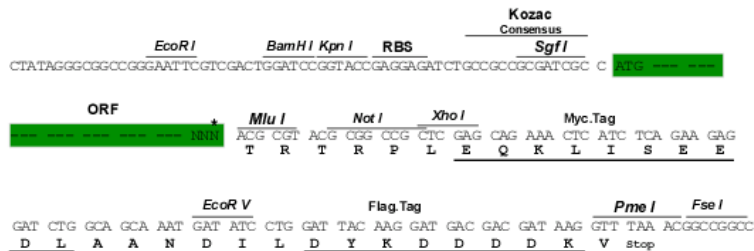
TRTRPLEQKLISEEDLAANDILDYKDDDDKV

Restriction Sites:

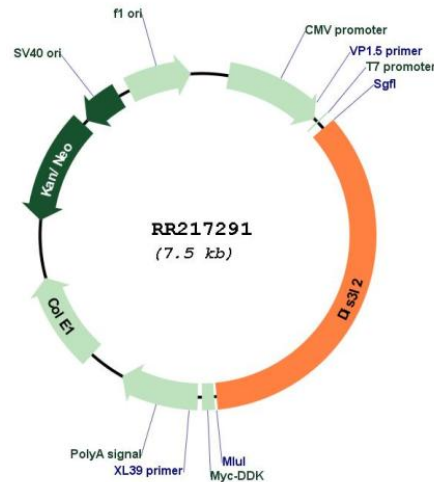
SgfI-MluI

Cloning Scheme:

Cloning sites used for ORF Shuttling:



* The last codon before the Stop codon of the ORF

Plasmid Map:


ACCN: NM_001172159

ORF Size: 2628 bp

OTI Disclaimer: The molecular sequence of this clone aligns with the gene accession number as a point of reference only. However, individual transcript sequences of the same gene can differ through naturally occurring variations (e.g. polymorphisms), each with its own valid existence. This clone is substantially in agreement with the reference, but a complete review of all prevailing variants is recommended prior to use. [More info](#)

OTI Annotation: This clone was engineered to express the complete ORF with an expression tag. Expression varies depending on the nature of the gene.

Components: The ORF clone is ion-exchange column purified and shipped in a 2D barcoded Matrix tube containing 10ug of transfection-ready, dried plasmid DNA (reconstitute with 100 ul of water).

Reconstitution Method:

1. Centrifuge at 5,000xg for 5min.
2. Carefully open the tube and add 100ul of sterile water to dissolve the DNA.
3. Close the tube and incubate for 10 minutes at room temperature.
4. Briefly vortex the tube and then do a quick spin (less than 5000xg) to concentrate the liquid at the bottom.
5. Store the suspended plasmid at -20°C. The DNA is stable for at least one year from date of shipping when stored at -20°C.

RefSeq: [NM_001172159.1](#), [NP_001165630.1](#)

RefSeq Size: 3126 bp

RefSeq ORF: 2631 bp

Locus ID: 367307

Cytogenetics: 9q35

MW: 98.4 kDa