

Product datasheet for **RR217281**

Il12rb2 (NM_001191750) Rat Tagged ORF Clone

Product data:

Product Type:	Expression Plasmids
Product Name:	Il12rb2 (NM_001191750) Rat Tagged ORF Clone
Tag:	Myc-DDK
Symbol:	Il12rb2
Vector:	pCMV6-Entry (PS100001)
E. coli Selection:	Kanamycin (25 ug/mL)
Cell Selection:	Neomycin



[View online »](#)

ORF Nucleotide Sequence:

>RR217281 representing NM_001191750
 Red=Cloning site Blue=ORF Green=Tags(s)

TTTTGTAATACGACTCACTATAGGGCGGCCGGGAATTCGTGACTGGATCCGGTACCGAGGAGATCTGCC
 GCC**CGGATCGCC**

ATGGCACACACTGTTAGAGGATGCTCATTGGCACTATTTTTTTTGTTCATGTGGCTGTTGATTAAGCAA
 ATATAGATGTGTGCAAGCTTGGCACCGTACTGTCCAGCCTGCCCTGTGATTCCAATTGGTCAACTGC
 CAATATTTCTGCTCTTTGAATCCCAAACAAGGCTGTTCCGATTATCCTAGTTATAACGAATTAATCCTC
 TTAAGTTTGTCAATGATGTCCTTGTGCAAAAACCTCCATGGCAAAAAGTCCATGGCCACCCTAGTCATT
 CCTCCATATTTCAAGTACCAACCTGTCTCTTGGTATGACTCTGTTTGTCTGCAAGCTAAACTGTAGCAA
 CTCTCAAAGACACAACCAGTGCCAGTGTGTGGAGTGGAGATCTCAGTCGGTGTGCTCCAGAGTCACT
 CAAAGCATATCATGTGCCAGAAAGGAGAGCATGGAACGTGGCCTGCTCCTGGAACCTGGGAAAGTTA
 CTTATCTGAAAACCTATTACACTTTACAGTTAACTGGACCAAACAATGTGACCTATCAGAACCAGTGTTA
 TTCTGACAATCGTCAGAATTGTAGTCGTCTGGATCTTGGGATCAATCTGACCCCTGATTTAGCCGAATCC
 AGGTTCCATAGTCCATGTTACTGCCACCAATGATCTTGAAATTTCTTCACTTCTGCATACATTACAT
 TCTTGACATAGTGAGGCTCTTCTCCGTGGGACATCAGAATCAACTTTCTAAATGCTTCTGGGAGCAG
 ATGTACACTGCAGTGGGAAGATGAGGGCAAGTGGTACTCAATCGACTCAGATACCAGCCTCTAACAGC
 ACATCCTGGAATATGGTTAATGTACAAATGCCAAAGGAAGATATGACCTGCAAGATCTGAGACCATTCA
 CAGAATATGAATTTAGATCTCCTCTAAGTACATCTCTCTCAGGGAAGTTGGAGTAATTTGGAGTGAGTC
 ACTGAGAACTCGAACACCAGAGGAAGAGCCTGTTGGGACATTAGACATCTGGTACATGAAACAAGATATT
 GACTGTGACAGACAACAGATCTCTCTTTCTGGAAGAGTCTGAATCCATCAGAGGCAAGGGGAAGATCC
 TCCACTATCAGGTGACTTTACAGGAGTGACGAAGAAAACACTACACTGCAGAATACTACAAGACATACCTT
 CTGGACCGGGGTATTCCAGAACTGGGCTTGGACTGCATCTGTGTCTGCAGCCAACCTCAAAGGCACT
 TCTGCACCCACTCACATTAACATAGTGGACCTGTGTGGCACTGGGTTCTGGCTCCTACCAGGTCTCTG
 CAAAGTCAGGGAACATGGACAACATCATGGTGACCTGGCAGCCTCCTGGGAAAGCTGACTCTGTATTCTG
 GGAGTACATAGTGAATGGAGGGCTCTCCAACAAGGGAGCGTCATGAACCTTACCCACACTGGCTGCGA
 ATTCCCCCTACAACATGTCTGCTCTGATTTTCTGAGAGAAGATAAAGCCCTATATCTGTTACGAAATCCGGG
 TACATGCACTGTCAGAGGACCAAGGAGGTGCAGCTCCATCCGGGGTACTCCAGTCACAAAGTCCACT
 GAGTGGCCCTCATCACTGCTATCACAGAAAAAGGAAAGCCTTTTTTATTTCTGGACCCACATCCCT
 TTCTGGAGCAAAGGGGCTGCATCCTCCATTACAGAATATATTGGAAGGAGCGACTCTACTGCGCAAC
 CCGAGCTCTGTGAAATCAGTACAGACTCTCAAACCTCACATCCAATAAGCAGCTACAGCCCAAGGT
 GACATATGTCCTATGGATGACAGCTGTGACAGCTGCTGGTGAAGTCCCAAGGAAATGAAAGGGAATTT
 TGTCCACAGGGCAAAGCCAACCTGGAAAACATTCGTGATATCAAGCATTTCATCGCTATCATCGTGGTGG
 GCACTTTCTCAATTCGTTACTTCAGGCAAAAGGCATTTACTCTCCTTTCTACTCTCAAACCCCAATGGTA
 TTGCAGAACTATCCAGATCCAGCAAATAGCACTTGGGTAAGAAGTACCCCATATGGAGGAGAAGATC
 CAGCCACCTATGGACAATCTCCTGATGGCCTGGTCCGCTCCTGAAGAGCCTGAGCCCTGATCATCAATG
 AAGTCTCTACCAAATGATCCCAGTAGGCAGACAACCCATTGCTTCAAAGAGGACAAGGGTTCCAAGG
 TTACTCTACCTCCAAGGAAGACACAATATACCTTGGCACCACCAACTCAGGAACTCTCACAGCT
 GAGTCGAGACAACACTAGTGAATCTATACAAGGTGCTAGGAAGCAGGACCCTGACTCAAACCTGGGCAACC
 TGACCAGCCCTTACAGTACACCCAGTGAACCTTCTACCCATGAAGGCTATTTACCTCCAACAT
 AGAAGACCTCTCATCACATGAAGTTGACCCAAGTGATTCTTTAGACCTGGACCATCAACATATTTCTCTT
 TCCATTTTGCATCAAGTTCTCTCCGCCACTCACCTTCTGTGGTGGAGGCTGACTCTAGATCGGTTAA
 AGATGGGCTACGAGAAA

ACGGCTACGCGGCCGCTCGAGCAGAAAACCTCATCTCAGAAGAGGATCTGGCAGCAAATGATATCCTGGATT
 ACAAGGATGACGACGATAAGGTTTAA

Protein Sequence: >RR217281 representing NM_001191750
Red=Cloning site Green=Tags(s)

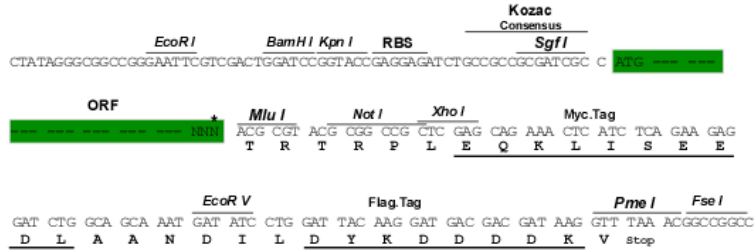
MAHTVRGCSLALIFLFWLLIKANIDVCKLGTVTVPAPVIPLGSTANISCSLNPQGCSHYPSYNELIL
LKFVNDVLEKLGKVVHGHPSHSSIFQVTNLSLGMTLFVCKLNCSNSQKTQVPVPCGVEISVGVAPEP
QSISCVQKGEHGTVACSWNSGKVTYLKTYTLLQLTGPNNVTYQNCYSDNRQNC SRLDLGINLTPDLAES
RFIVHVTATNDLGNSSLLHTFFLDIVRPLPPWDIRINFLNASGSRCTLQWEDEGQVVLNRLRYQPLNS
TSWNMVNATNAKGRYDLQDLRPFTEYEFQISSKHLHL SQGSWSNWSESLRTRTPEEEPVGTLDIWYMKQDI
DCDRQQISLFWKSLNPSEARGKILHYQVTLQEVTKKTTLQNTTRHTFTWGVIPRTGAWTASVSAANSKGT
SAPTHINIVDLCGTGFLAPHQVSAKSGNMDNIMVTWQPPGKADSVIREYIVEWRALQQGSVMNLTPHWLR
IPPYNMSALISEKIKPYICYEIRVHALSEDQGGCSSIRGDSSHKVPLSGPHITAI TEKKESLFI SWTHIP
FLEQRGCILHYRIYWKERHSTAQPELCEIQYRHSQNSHPISLQPKVTYVLWMTAVTAAGESPQGNEREF
CPQGANWKT FVISSICIAIIVVGTFSIRYFRQKFTLLSTLKPQWYCRITPDPANSTWVKKYPIMEEKI
QPPMDNLLMAWSAPEEPEPLIINEVLYQMIPVGRQPYCFKRGQGFQGYSTSKEDTIYLATNPQTGTTLTA
ESRQLVNLKVLGSRDPDSKLGNTSPLTVTPVNYLP THEGYLPSNIEDLSSHEVDPDSDLDLHQHISL
SIFASSSLRPLTFCGERLTLDRKMGYEK

TRTRPLEQKLI SEEDLAANDILDYKDDDDKV

Restriction Sites: Sgfl-MluI

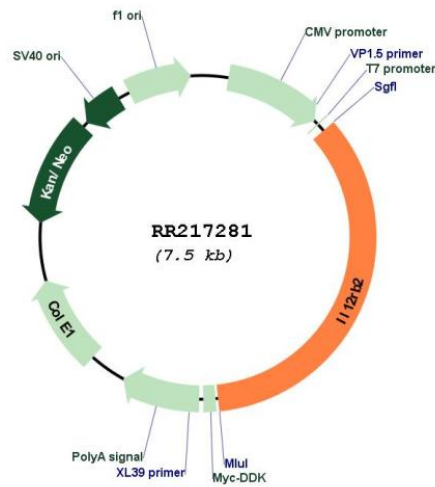
Cloning Scheme:

Cloning sites used for ORF Shuttling:



* The last codon before the Stop codon of the ORF

Plasmid Map:



ACCN:	NM_001191750
ORF Size:	2607 bp
OTI Disclaimer:	The molecular sequence of this clone aligns with the gene accession number as a point of reference only. However, individual transcript sequences of the same gene can differ through naturally occurring variations (e.g. polymorphisms), each with its own valid existence. This clone is substantially in agreement with the reference, but a complete review of all prevailing variants is recommended prior to use. More info
OTI Annotation:	This clone was engineered to express the complete ORF with an expression tag. Expression varies depending on the nature of the gene.
Components:	The ORF clone is ion-exchange column purified and shipped in a 2D barcoded Matrix tube containing 10ug of transfection-ready, dried plasmid DNA (reconstitute with 100 ul of water).
Reconstitution Method:	<ol style="list-style-type: none">1. Centrifuge at 5,000xg for 5min.2. Carefully open the tube and add 100ul of sterile water to dissolve the DNA.3. Close the tube and incubate for 10 minutes at room temperature.4. Briefly vortex the tube and then do a quick spin (less than 5000xg) to concentrate the liquid at the bottom.5. Store the suspended plasmid at -20°C. The DNA is stable for at least one year from date of shipping when stored at -20°C.
RefSeq:	NM_001191750.1 , NP_001178679.1
RefSeq Size:	2610 bp
RefSeq ORF:	2610 bp
Locus ID:	171334
Cytogenetics:	4q31
MW:	97.7 kDa
Gene Summary:	transmembrane protein that belongs to the hemopoietin receptor superfamily; human homolog binds interleukin (IL)12 with a low affinity and may be a part of the IL12 receptor complex [RGD, Feb 2006]