

Product datasheet for **RR217276**

Sema4d (NM_001170563) Rat Tagged ORF Clone

Product data:

Product Type:	Expression Plasmids
Product Name:	Sema4d (NM_001170563) Rat Tagged ORF Clone
Tag:	Myc-DDK
Symbol:	Sema4d
Mammalian Cell Selection:	Neomycin
Vector:	pCMV6-Entry (PS100001)
E. coli Selection:	Kanamycin (25 ug/mL)



[View online »](#)

ORF Nucleotide Sequence:

>RR217276 representing NM_001170563
 Red=Cloning site Blue=ORF Green=Tags(s)

TTTTGTAATACGACTCACTATAGGGCGGCCGGAATTCGTCGACTGGATCCGGTACCGAGGAGATCTGCC
 GCC**CGGATCGCC**

ATGAAGATGTGTGCCCGTCAGGGGGCTGTTCTTGGCCCTGGTGGCTGTGTGGAGGACCGCGTGGCAT
 TCGCCCTGTGCCTCGGATCACCTGGGAGCACGGAGAGGTAGGTCTGGTGAAGTTTCACGAGCCAGGCAT
 CTTAACTACTCTTCTTCTGCTGATGAGTGAAGACAAAGACTCTGTATGTGGGTGCCCGGGAAGCTGTC
 TTTGCAGTGAATGCGCTGGACATCTCTGAGAAGCAACATGAGGTATACTGGAAGGTCTCTGAAGACAAAA
 AATCCAAGTGCAGAGAAGGGGAAATCAAAGCAGACGGAGTGCCTTAACTACATCCGAGTGTGCAACC
 GCTTAGCAGCACTTCCCTCTACGTGTGTGGACCAATGCGTTCAGCCACCTGTGACCACCTGAACTTG
 ACCTCTTCAAGTTTCTGGGAAAAGCGAAGATGGCAAAGGAAGATGCCCTTCGACCCCGCCATAGCT
 ACACATCCGTATGGTCGGGGGAGAGCTCTACTCTGGGACTTCATATAATTTCTGGGCAGCGAACCCAT
 CATCTCTCGAAACTTCCCACAGTCCCCTGAGGACAGAGTACGCCATCCCTTGGCTAAACGAGCCTAGC
 TTCGTCTTTGCTGACGTATCCACAAGAGCCAGATGGTACAGAGGCTGAGGATGACAAGGTCTACTTCT
 TCTTTACGGAGGTGCCGTGGAGTACGAGTTCGTCTTCAAGTTGATGATCCCGGAGTTGCCAGGGTGTG
 CAAGGGCGACAGGGCGGCTGCGGACTTTGCAAAAAAGTGGACCTCCTTCTAAAGGCCAGACTGATC
 TGCTCCAGGCCAGACAGTGGCCTGGTCTTCAACATTCTTCAAGATGTGTTTGTGCTGAGGGCCCCGGCC
 TCAAGGAACCTGTGTTCTATGCGGTCTTCAACCCACAGCTGAACAACGTGGGTCTGTGAGCGGTCTGTGC
 CTACACGCTGTCCAGGTGGAGGCCGTCTTCTCCCGAGGAAAGTACATGCAGAGTGCACAGTGGAGCAG
 TCTCACACCAAGTGGGTACGCTACAATGGCCAGTGCCTTCCAGACAAAACGCTGAGTGTGCAAGACCA
 AGCCCGGGCAGCCAACACACCACTCCTTGAATCTCCAGACAAAACGCTGAGTGTGCAAGACCA
 CCCTTTGATGGACGACTCGGTGACGCCAATAGACAACAGGCCGAAACTGATCAAAAAAGATGTCAACTAC
 ACCCAGATAGTGGTAGACAGGACCCAGGCCCTGGATGGGACCTTCTACGACGTCATGTTCTCAGCACAG
 ACCGGGGCGCTCTGCATAAAGCTGTATCCTTGCAAAAAGAGGTACACGTGGTTGAGGAGACCCAACCTCT
 CCAGGACTTGAACCGGTCTGTCTCTGCTGCTATCATCAAAGAAGGGGAGGAAGTTTGTCTATGCTGGC
 TCCAACCTCAGGAGTGGTCCAAGCTCCCCTGGCCTTCTGCGGAAAGCACAGTAGCTGTGAAGACTGTGTGC
 TAGCACGGGACCCCTACTGCGCCTGGAGCCAGCCATCAAGGCCGTGTTACCTTGACCCAGGCAGAGGG
 CTCTAGCAGGGGTGGATTGAGGACATGAGTGGCGACACGTCCTCGTGCCTGGATAAGAGTAAAGAAAGT
 TTCCATCAGCATTTTTTCAAGCACGGCGGCACAGCAGAACTCAAGTGTTCCTCAAAAGTCCAACCTGGCCC
 GGGTGGTGTGAAAGTCCAGAACGGCGAGTTGAAGGCTGTGAGTCCCAAGTATGGCTTTGTGGGCAGGAA
 GCACCTGCTCATCTTAACTGTGACAGCGGAGACAGCGGTGTGTACCAAGTGCCTGTGAGAGGAAAGGGT
 AGGAATAAAACGGTCTCCAGCTGCTCGCCAAGCACATCCTGGAAGTGAAGTGGTAGCTCGGATCCCCC
 CATCACTACCTCACAGACTGCTCAGACAGAAGGTAGTAGGATCATATCCAAAATGCCTGTGGCGTCTAC
 CCAGGGGTCTCTCCCCTACCCCGGCTCTGTGGGCAACCTCCCCAGGGCTGCCACCCTACCTCCCAAG
 TCCTCTCCACCGGCACGTCCTGTGAACCAAAAATGGTATCAACACGGTCCCACAGCTCCACTCGGAGA
 AGACAGTGTATCTCAAGTCCAGTGACAACCGCTGCTCATGTCTCTCTCTCTCTCTCTCTCTCTCTCTCT
 CCTCTGCCTCTTTTCTACAACCTGCTACAAGGGCTACCTGCCCGGACAGTGTAAAGTCCGCTCAGCC
 CTGCTGCTCGCAAAAGAAAAACCAAGTCAGAGTTCTCTGACCTGGAGCAGAGTGTGAAGGAGACGCTGG
 TAGAACCTGGGAGCTTCTCGCAGCAGAACGGCGACCAGCCCAAGCCAGCCTTGGATACCGCTATGAAAC
 CGAGCAGGACACTATCACAGCAAGGTCCCACCGATCGAGAGGACTCGAACGTATCGACGAGCTCTCC
 GCCAGGGACAAACCGTTTGATGTCAAGTGTGAACCTCAAGTTTGCAGACTCGGATGCCGACGGGGAC

ACGGTACGGGGCGCTCGAGCAGAACTCATCTCAGAAGAGGATCTGGCAGCAATGATATCTGGATT
 ACAAGGATGACGACGATAAGGTTTAA

Protein Sequence: >RR217276 representing NM_001170563
Red=Cloning site Green=Tags(s)

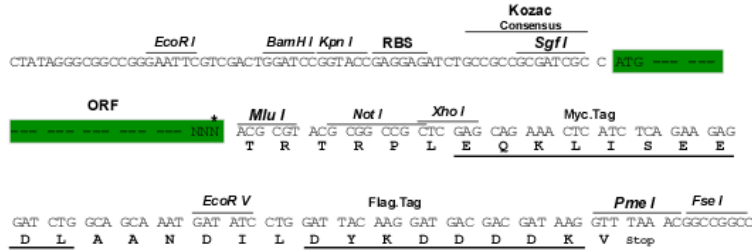
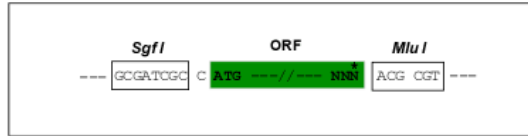
MKMCAPVRGLFLALVAVWRTAVAFAPVPRITWEHGEVGLVKFHEPGIFNYSSLLMSEDKDTLYVGAREAV
FAVNALDISEKQHEVYWKVSEDKKSKCAEKGKSKQTECLNYIRVLQPLSSTSLYVCGTNAFQPTCDHLNL
TSFKFLGKSEDKGRCPPDPAHSYTSVMVGGELYSGTSYNFLGSEPIISRNSHSPLRTEYAIPWLNPS
FVFADVIHKSPDGTAEEDDKVYFFTEVSVYEYFVFKLMIPRVARVCKGDQGGRLTLQKKWTSFLKARLI
CSRPDGLVFNILQDVFVLRAPGLKEPVFYAVFTPQLNNVGLSAVCAYTLSTVEAVFSRGKYMQSATVEQ
SHTKWVRYNGPVPTPRPGACIDSEARAANYTSSLNLPDKTLQFVKDHPLMDSVTPIDNRPKLIKDVDNY
TQIVVDRTQALDGTfydvmflstDRGALHKAVILAKEVHVVEETQLFQDFEPVLSLLSSKKGRKFVYAG
SNSGVVQAPLAFCGKHSSCEDCVLARDPYCAWSPAIAKACVTLHQAEGSSRGWIQDMSGDTSSCLDKSKES
FHQHFFKHGGTAEKCFQKSNLARVVWKFQNGELKAVSPKYGFVGRKHLIFNLSDGDSGVYQCLSEERV
RNKTVSQQLLAKHILEVKMVARIPPSPTSQTAQTEGSRITSKMPVASTQGSSPPTPALWATSPRAATLPPK
SSSTGTSCEPKMVINTVPQLHSEKTVYLKSSDNRLMSLLLFLFVLFCLFSYNCYKGYLPGQCLKFRSA
LLLAKKKPKSEFSDLEQSVKETLVEPGSFSQNGDQPKPALDTGYETEQDTITSKVPTDREDSQRIDELS
ARDKPFVVKCELKFADSDADGD

TRTRPLEQKLISEEDLAANDILDYKDDDDKV

Restriction Sites: Sgfl-MluI

Cloning Scheme:

Cloning sites used for ORF Shuttling:



* The last codon before the Stop codon of the ORF

ACCN: NM_001170563

ORF Size: 2586 bp

OTI Disclaimer: The molecular sequence of this clone aligns with the gene accession number as a point of reference only. However, individual transcript sequences of the same gene can differ through naturally occurring variations (e.g. polymorphisms), each with its own valid existence. This clone is substantially in agreement with the reference, but a complete review of all prevailing variants is recommended prior to use. [More info](#)
OTI Annotation: This clone was engineered to express the complete ORF with an expression tag. Expression varies depending on the nature of the gene.

Components: The ORF clone is ion-exchange column purified and shipped in a 2D barcoded Matrix tube containing 10ug of transfection-ready, dried plasmid DNA (reconstitute with 100 ul of water).

Reconstitution Method:

1. Centrifuge at 5,000xg for 5min.
2. Carefully open the tube and add 100ul of sterile water to dissolve the DNA.
3. Close the tube and incubate for 10 minutes at room temperature.
4. Briefly vortex the tube and then do a quick spin (less than 5000xg) to concentrate the liquid at the bottom.
5. Store the suspended plasmid at -20°C. The DNA is stable for at least one year from date of shipping when stored at -20°C.

RefSeq: [NM_001170563.1](#), [NP_001164034.1](#)

RefSeq Size: 4187 bp

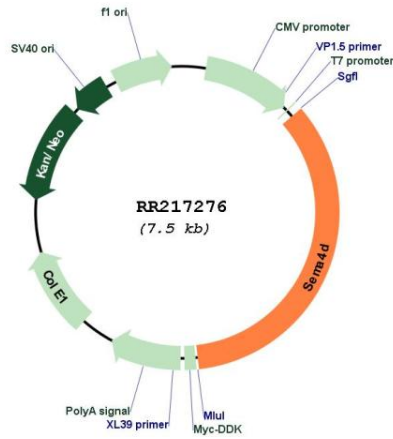
RefSeq ORF: 2589 bp

Locus ID: 306790

Cytogenetics: 17p14

MW: 95.8 kDa

Product images:



Circular map for RR217276