

Product datasheet for **RR217275**

Trpc7 (NM_001191691) Rat Tagged ORF Clone

Product data:

Product Type:	Expression Plasmids
Product Name:	Trpc7 (NM_001191691) Rat Tagged ORF Clone
Tag:	Myc-DDK
Symbol:	Trpc7
Vector:	pCMV6-Entry (PS100001)
E. coli Selection:	Kanamycin (25 ug/mL)
Cell Selection:	Neomycin



[View online »](#)

ORF Nucleotide Sequence:

>RR217275 representing NM_001191691
 Red=Cloning site Blue=ORF Green=Tags(s)

TTTTGTAATACGACTCACTATAGGGCGGCCGGAATTCGTCGACTGGATCCGGTACCGAGGAGATCTGCC
 GCC**CGATCGCC**

ATGTTGGGGAGCAACACCTTCAAAAACATGCAGCGCCGGCACACCACCTTGAGGGAGAAGGGGGCCGCC
 AGGCCATCCGGGGTCTGCTACATGTTCAATGAGAAGGGCACCGCTGACCCCTGAGGAGGAGCGCTT
 CCTGGACTCGGCTGAGTATGGCAACATACCAGTGGTCAGGAAAATGTTGGAGGAGTCCAAGACCCTCAAT
 TTCAACTGCGTGGACTACATGGGGCAGAACGCGCTGCAGCTAGCTGTGGGCAACGAGCACCTAGAGGTCA
 CTGAACTGCTGCTGAAGAAGGAGAACTTGGCTCGAGTGGGCGACGCGCTGCTGCTGGCCATCAGCAAGGG
 CTACGTGCGCATTGTGGAGGCCATCCTCAGCCATCCGGCCTTCGCACAGGGCCAGCGGCTGACGCTCAGC
 CCGCTGGAGCAGGAGCTGCGCGATGACGACTTCTATGCCTACGACGAGGATGGCACGCGCTTCTCCCACG
 ACATCACACCCATCATCCTGGCGGCCACTGCCAGGAGTACGAGATTGTACACATCCTGCTGCTCAAGGG
 TGGCGCATTGAGCGGCCCATGACTACTTCTGCAAGTGAATGAGTGCACCGAGAAGCAGCGCAAGGAC
 TCCTTCAGCCATTCGCGCTCCCGTATGAATGCCTACAAAGGACTGGCCAGTGCCTGCTACCTGTCCCTAT
 CCAGTGAAGACCCTGTCCTCACTGCACTGGAGTAAGCAACGAGTTAGCCAGACTGGCCAACATTGAGAC
 TGAATTTAAGAACGACTACAGGAAGTTATCTATGCAATGCAAGGACTTTGTGGTGGGCGTCTGGACCTG
 TGCCGAGACACGGAAGAGGTGGAAGCAATTTAAATGGCGACGTGAACCTGCAAGTCTGGTCCGACCACC
 ACCGTCCAAGTCTGAGCCGCATCAAACCTGCCATTAAGTACGAAGTCAAGAAGTTCGTTGCCACCCCTAA
 CTGTCAGCAGCAATTGCTTACCATGTGGTATGAAAATCTCTCAGGCTTACGGCAACAGTCTATCGCTGTG
 AAATCCTGGCTGCTTTGGAGTCTCCATAGCCCTCCCTTTCTCGCCATAGCCTATTGGATTGCTCCGT
 GCAGCAAGCTAGGACGAACCCCTGAGGACCCCTTTCATGAAGTTCGTAGCCACGCGGTGCTTTTACCAT
 CTTCCTGGGACTGCTAGTTGTGAATGCATCCGACCGGTTTGAGGGTGTTAAGACTTTGCCAACGAGACC
 TTCACAGACTACCCAAACAGATCTTCAGAGTGAACCACGAGTTCTCCTGGACGGAGATGCTCATCA
 TGAAGTGGGTCTTAGGAATGATCTGGTCTGAATGCAAGGAGATCTGGGAGGAGGGCCGCGGGAGTACGT
 GCTGCACTTGTGGAACCTACTGGATTTCCGCATGTTGTCCGTCTTCGTGGCTCCTTACCAGGAGGTTT
 ATGGCTTCTCAAGGCCAGTGGGCCCAGCTGTACGTGGACCAGTACGTGCAGGATGTAACGCTGCACA
 ACGTCTCACTTCCGCCGGAAGTGGCATACTTACCTACGCCAGGACAAGTGGTGGCCTTCAGACCCCCA
 GATCATCTCGGAAGGGCTGTACGCCATCGCTGTTGTAAGTACTCAGCTTCTCCCGATTGCCTATATCCTGCCA
 GCCAATGAGAGCTTCGGGCCCTTCAGATCTCCCTGGGAGAAGTGTAAAGACATCTTCAAGTTCATGG
 TCATCTTTATCATGGTGTGTTGTGGCCTTATGATCGGGATGTTCAACCTGTACTCCTACTACCGAGGTGC
 AAAGTACAACCCCGGTTTACAACAGTTGAAGAGAGCTTTAAAACCCGTGTTTGGTCCATATTTGGCTTG
 TCTGAGGTCACTCGGTGGTGTGAAGTACGACCACAAGTTTCATCGAGAACATCGGCTACGTGCTGTACG
 GCGTTTAAATGTCACCATGGTGGTGTGCTGCTCAACATGCTGATAGCCATGATCAACAACCTCCTATCA
 GGAAATCGAGGAAGACGACGAGTGGAGTGGAAATTTGCTCGAGCCAAGCTCTGGCTTCCCTACTTTGAT
 GAAGGAAGAACTCCTCCTGCTCCCTTAACTGGTGGCAGTCTAAATCCTTTTATTATCTCATAATGA
 GAATCAAGATGTCCCTCATAAAGCTCTGCAATCTAAGGCCAAACGCTGTGAAAACGACCTGGAAATGG
 CATGCTGAACTCAAATTCAGGAAGACTCGCTACCAGGCCGCAATGAGGAATTCTGAAAACCTGACAGCT
 AACAGCACCTTCAGCAAGCCACCAGATACCAGAAGATCATGAAGCGTCTCATTAAAGAGATACGTGCTGA
 AGGCCAGGTGGACCGGAGAATGATGAAGTCAACGAAGTGAAGTCAAAGAGATCAAGCAAGACATCTC
 AAGCCTTCGCTATGAGCTCCTGGAGGAGAAGTCTCAAGTACCGGAGAGCTGGCAGACCTGATCCAACAG
 CTCAGTGAGAAGTTGGAAGAATTTGAACAAAGACCACCTGAGGGTGAACAAGGCAAGGACATT

ACGGTACGGGGCGCTCGAGCAGAACTCATCTCAGAAGAGGATCTGGCAGCAATGATATCCTGGATT
 ACAAGGATGACGACGATAAGGTTTAA

Protein Sequence: >RR217275 representing NM_001191691
Red=Cloning site Green=Tags(s)

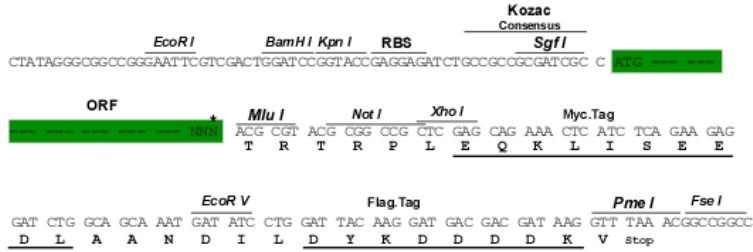
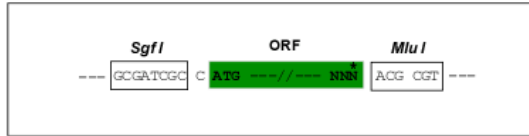
MLGSNTFKNMQRHHTLREKGRRQAIRGPAYMFNEKGTSLTPEEERFLDSA EYGNIPVVRKMLEESKTLN
FNCVDYMGQNALQLAVGNEHLEVTELLKKENLARVGDALLLAISKGYRIVEA ILSHPAFAQGQRLTSL
PLEQELRDDDFYAYDEDGTRFSDITPIILAAHCQEYEVHILLKGGARIERPHDYFCKCNECTEKQRKD
SFSHSRSRMNAYKGLASAA YLSSEDPVLTALEL SNELARLANIETEFKNDYRKL SMQCKDFVVGVL DL
CRDTEEVEAILNGDVNLQVWSDHHRPSLSRIKLAIKYEVKKFVAHPNCQQLLTMWYENLSGLRQQSI AV
KFLAVFGVSI GLPFLAIAYWIAPCSKLGRTLRS PFMKFVAHAVSF TIFLGLLVVNASDRFEGVKTL PNET
FTDYPKQIFRVKTTQFSWTEMLIMKWV LGMWSECKEIWEEGPREYV LHLWNLLDFGMLS V FVASFTARF
MAFLKASEAQLYVDQYVQDVTLHNVS LPPEVAYFTYARDKWWP SDPQII SEGLYAI AVVLSFSRIAYILP
ANESFGPLQISLGR TVKDI FKF MVIFIMVFVAFMIGMFNLYSYRGAKYNPAFTTVEESFKTLFWSIFGL
SEVISVVLKYDHKFIENIGYVLYGVYVNTMVVLLNMLIAMINNSYQEI EEDADVEWKFARAKLWLSYFD
EGRTL PAPFNLVPSPKSFYYLIMRIKMCLIKLCKSKAKRCENDLEMGMLNSKFRKTRYQAGMRNSENLT A
NSTFSKPTRYQKIMKRLIKRYV LKAQVDRENDEVNEGELKEIKQDISSLRYELLEESQATGELADLIQQ
LSEKFGKNLNKDHLRVNKGKDI

TRTRPLEQKLI SEEDLAANDILDYKDDDDKV

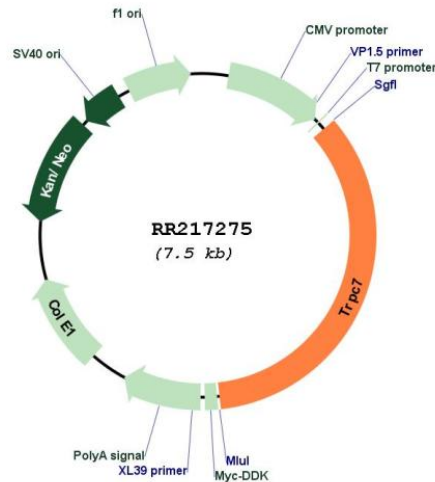
Restriction Sites: Sgfl-MluI

Cloning Scheme:

Cloning sites used for ORF Shutting:



* The last codon before the Stop codon of the ORF

Plasmid Map:


ACCN: NM_001191691

ORF Size: 2586 bp

OTI Disclaimer: The molecular sequence of this clone aligns with the gene accession number as a point of reference only. However, individual transcript sequences of the same gene can differ through naturally occurring variations (e.g. polymorphisms), each with its own valid existence. This clone is substantially in agreement with the reference, but a complete review of all prevailing variants is recommended prior to use. [More info](#)

OTI Annotation: This clone was engineered to express the complete ORF with an expression tag. Expression varies depending on the nature of the gene.

Components: The ORF clone is ion-exchange column purified and shipped in a 2D barcoded Matrix tube containing 10ug of transfection-ready, dried plasmid DNA (reconstitute with 100 ul of water).

Reconstitution Method:

1. Centrifuge at 5,000xg for 5min.
2. Carefully open the tube and add 100ul of sterile water to dissolve the DNA.
3. Close the tube and incubate for 10 minutes at room temperature.
4. Briefly vortex the tube and then do a quick spin (less than 5000xg) to concentrate the liquid at the bottom.
5. Store the suspended plasmid at -20°C. The DNA is stable for at least one year from date of shipping when stored at -20°C.

RefSeq: [NM_001191691.2](#), [NP_001178620.2](#)

RefSeq Size: 3055 bp

RefSeq ORF: 2589 bp

Locus ID: 282822

Cytogenetics: 17p14

MW: 99.5 kDa

Gene Summary: non-selective cation channel; activated down-stream of G-protein-coupled receptors [RGD, Feb 2006]