

Product datasheet for **RR217272**

Rps6ka6 (NM_001191721) Rat Tagged ORF Clone

Product data:

Product Type:	Expression Plasmids
Product Name:	Rps6ka6 (NM_001191721) Rat Tagged ORF Clone
Tag:	Myc-DDK
Symbol:	Rps6ka6
Synonyms:	RGD1560817
Vector:	pCMV6-Entry (PS100001)
E. coli Selection:	Kanamycin (25 ug/mL)
Cell Selection:	Neomycin



[View online »](#)

ORF Nucleotide Sequence:

>RR217272 representing NM_001191721
 Red=Cloning site Blue=ORF Green=Tags(s)

TTTTGTAATACGACTCACTATAGGGCGGCCGGGAATTCGTCGACTGGATCCGGTACCGAGGAGATCTGCC
 GCC**CGCATCGCC**

ATGCTGAATTTTAGAAGGACACGACACACACCATCTGGCCACAGGTCCAACCTCTAGCTTGAACCTGTTCT
 GTTGCTTTCCGTTTTTTGGATGTCGTCGACAATCCAGGAGTCGGCAGCGGGCGGGGACCCCTGTGGTCCC
 TCTTTTGAAGTACCCGCCTTTGGCGAGGTCAAGCAGTCACCCAGCGCGAGTCCTGGTCTACGAAGAAGAC
 CACGAGCCAGCTCAGCAGGCGGGATGCATGCTGGTGTGGGGACAAGCAGCTTCTTTTCGAGTGTTCTCTG
 AAGCGCGATGCTACCATTCGCTCCTGTGGAGGATCCCTGGGACGAAGAAATGGAGGTGTTCCGCGAGTGG
 CAGCACGAGCAGTAGCGAGCCACAGATTGTGTTTACCATGAAGACTGCGGCGATGGTTATTCGACAGCAT
 GAACACAAAGAGGTAATGATCTTAAAAATGGTTGATGAACCAATGGATGAGGGAGAGCCAGTTTTTTGCC
 GCGGGAAAGATTTGGTTAAAGAAATCCCTATTACACAGCATGTTAAAGAAGGATATGAGAAAGCAGATCC
 CGCACAGTTCGACTTGCTCAAGGTTCTTGGTCAGGGATCTTTTGGAAAGTTTTTTCTTGTAGAAAAGAG
 ACTGGTCTGATGCTGGGACGCTCTATGCAATGAAGGTGTTAAGAAAAGCTTCTTTGAAGGTTCCGAGACC
 GTGTTTCGCACAAAGATGGAGAGGGATATACTGGTGAAGTAAATCATCCTTTTATCGTCAAACCTGCACTA
 TGCTTTTCAGACTGAAGGGAAGCTGTACTTAATATTGGATTTCTCAGGGGAGGAGATGTCTTCACAAGA
 TTATCAAAGAGGTTCTTTTACAGAGGAAGATGTGAAATTTCTACCTTGCAGGAAATGGCCCTAGCTTTGG
 ATCATCTGCATCGATTAGGAATTTGTGTATAGAGACCTGAAGCCAGAGAACATCTTGTGACGAAATAGG
 ACATATCAAGTTAACAGATTTTGGGCTGAGCAAAGAGTCAGTGGATCAAGAAAAGAAAGCCTACTCCTTC
 TGTGGTACTGTAGAATACATGGCCCCGAAGTAGTAAATCGAAGAGGCCATTCTCAGAGTGTCTGATTGGT
 GGTCATATGGTGTACTTATGTTTTGAAATGCTTACTGGCACATTGCCATTTCAAGGAAAGACAGAAATGA
 GACCATGAATATGATACTGAAAGCAAAACTTGGAAATGCCCAATTCCTTAGTGCTGAAGCACAAAGCCTT
 TTAAGGATGTTATTCAAAGGAATCCAGCAAATAGATTGGGATCAGAAGGAGTTGAAGAAGTCAAAGAC
 ATGCTTTTTTCTCTTCCATTGACTGGAATAAATATATAAAAGAGAAGTTCAGCCTCCTTTCAGACCTGC
 TTCTGGAAAACAGATGATACTTTTTGTTTTGATCCTGAATTTACTGCCAAAACACCTAAAGATTCTCCT
 GGTTCGCCAGCCAGCGCAAATGCTCATCAACTCTTCAAAGGATTCAGTTTTGTTGCGACTTCTATCGCAG
 AAGAATATAAAATCACTCCTGTTACAAGTTCAAATGTATTGCCAATCGTTCAGATAAATGGAAATGCTGC
 TCAATTTAGTGAAGCGTATGAGTTGAAAGAGGATATTGGTATTGGATCTTACTCTGTTTGAAGCGATGC
 ATACATTCAGCTTCCAACATGGAATTTGCAGTTAAGATCATTGATAAAAAAAGAGAGACCCCTCAGAAG
 AAATTGAAATTCGATGCGCTATGGACAACATCCAACATTATCTCTTTAAAGGAGGTCTTTGATGATGG
 GAAATATGTTTACCTTGTACGGACTTGATGAAAGGAGGAGAAGTCTGGATCGCATTCTCAAAAAGAAA
 TGTTTTCTCAGAGCAGGAAGCTAGTAATGTGCTGTATGTAATTACCAAGACAGTTGAATACCTTATTCTC
 AAGGAGTCGTTTACGTCATCTTAAGCCAGTAATATTTTGTACATGGATGAATCAGGCCATCCAGATTC
 AATCAAGATCTGTGACTTTGGATTTGCAAAACAGCTTCGAGGAGAAAAATGGACTTCTGTTAACTCCATGC
 TACTGCAAACCTTTGTAGCCCCGAGGTTCTCACTCAACAGGGATATGATGCTGCCTGTGATATTTGGA
 GCTTAGGAGTCTTTTGTACACAATGTTGGCTGGCTCACTCCATTTTCAAATGGACCAATGATACTCC
 TGAGGAAATACTTCTGCGCATAGGCAATGGGAGGTTCTCTTTGAGTGGTGAATCTGGGATAAATTTTCA
 CGTGGAGCAAAGGATTTGCTTTTTCATATGCTTACATGGACCCACATCAGCGTTATACTGCTGAACAAG
 TATTAAGCACCTTGGATAACCCAAAGAGAACAAGTCCGCGTCATCAGCCAACCTCAGATGACCCGCC
 ACAGGAAGCAGTGGCTGCAGCATATTCTGTTTTGGCTCGGAACAGAACAGGCATCCAATCCTGGAGCCT
 GTTGCTGCTTACGTTTAGCTCAGAGACGTAACATGAAAAGCGAACATCAACTGGCTTA

ACCGGTACGCGGCCGCTCGAGCAGAACTCATCTCAGAAGAGGATCTGGCAGCAATGATATCCTGGATT
 ACAAGGATGACGACGATAAGGTTTAA

Protein Sequence: >RR217272 representing NM_001191721
Red=Cloning site Green=Tags(s)

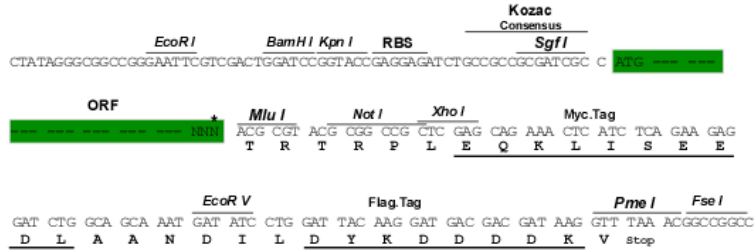
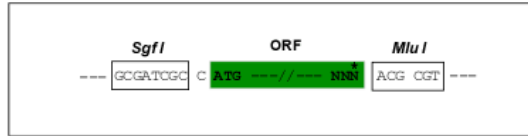
MLNFRRTRHTPSGHRNSSSLNLFCCFPFFGCRQRQSRQAGTPVVPLLRYPPLARSAVTQRESWSYEED
HEPAQQAGCMLVLGTSSFFSSVPEAAMPLFAPVEDPWDEEMEVFGSGSTSSSEPQIVFTMKAAMVIRQH
EHKEVNDLKMVDEPMDEGEPVFCRREDLVKEIPITQHVKEGYEKADPAQFDLLKVLGQGSFGKVFLVRKK
TGPDAGQLYAMKVLKASLKVDRVRRTKMERDILVEVNHPFIVKLHYAFQTEGKLYLILDFLRGGDVFTR
LSKEVLFTEEDVKFYLAELALDHLHRLGIVYRDLKPENILLDEIGHIKLTDGFLSKESVDQEKKAYSF
CGTVEYMAPEVNVNRRGHSQSADWWSYGVLMEMLTGTLPFQGKDRNETMNMILKAKLGMPQFLSAEAQSL
LRMLFKRNPANRLGSEGVEEVKRHAFFSSIDWNKLYKREVQPPFRPASGKPDPTFCFDPEFTAKTPKDSP
GLPASANAHLKFGFSFVATSI AEEYKIPVTSSNVLPVQINGNAAQFSEAYELKEDIGIGSYSVCKRC
IHSASNMEFAVKIIDKNKRDPEEIEILMRYGQHPNIIISLKEVFDDGKYVYLVTDLMKGGELLDRILKKK
CFSEQEASNVLVITKTVEYLHSQGVVHRDLKPSNILYMDESGHPDSIKICDFGFAKQLRGENGLLLTPC
YTANFVAPEVL TQQGYDAACDIWSLGVLLYTMLAGYTPFSNGPNDTPEEILLRIGNGRFSLSGGIWDNIS
RGAKDLLSHMLHMDPHQRYTAEQVLKHPWITQREQLPRHQPTSDPPQEAVAAAAYSVLARNQNRHPILEP
VAASRLAQRNMKKRTSTGL

TRTRPLEQKLISEEDLAANDILDYKDDDDKV

Restriction Sites: Sgfl-MluI

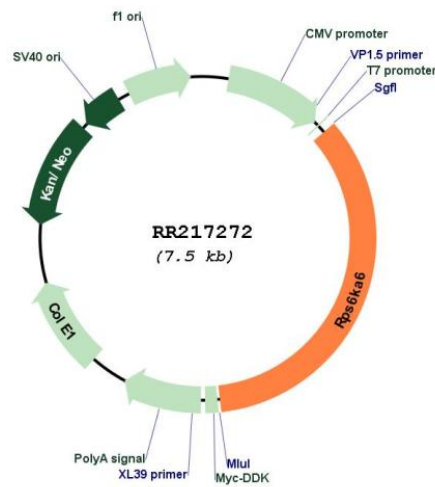
Cloning Scheme:

Cloning sites used for ORF Shuttling:



* The last codon before the Stop codon of the ORF

Plasmid Map:



ACCN:	NM_001191721
ORF Size:	2580 bp
OTI Disclaimer:	The molecular sequence of this clone aligns with the gene accession number as a point of reference only. However, individual transcript sequences of the same gene can differ through naturally occurring variations (e.g. polymorphisms), each with its own valid existence. This clone is substantially in agreement with the reference, but a complete review of all prevailing variants is recommended prior to use. More info
OTI Annotation:	This clone was engineered to express the complete ORF with an expression tag. Expression varies depending on the nature of the gene.
Components:	The ORF clone is ion-exchange column purified and shipped in a 2D barcoded Matrix tube containing 10ug of transfection-ready, dried plasmid DNA (reconstitute with 100 ul of water).
Reconstitution Method:	<ol style="list-style-type: none">1. Centrifuge at 5,000xg for 5min.2. Carefully open the tube and add 100ul of sterile water to dissolve the DNA.3. Close the tube and incubate for 10 minutes at room temperature.4. Briefly vortex the tube and then do a quick spin (less than 5000xg) to concentrate the liquid at the bottom.5. Store the suspended plasmid at -20°C. The DNA is stable for at least one year from date of shipping when stored at -20°C.
RefSeq:	NM_001191721.1 , NP_001178650.1
RefSeq Size:	2583 bp
RefSeq ORF:	2583 bp
Locus ID:	317203
Cytogenetics:	Xq31
MW:	97.4 kDa