

Product datasheet for **RR217260**

FstI5 (NM_001271195) Rat Tagged ORF Clone

Product data:

Product Type:	Expression Plasmids
Product Name:	FstI5 (NM_001271195) Rat Tagged ORF Clone
Tag:	Myc-DDK
Symbol:	FstI5
Vector:	pCMV6-Entry (PS100001)
E. coli Selection:	Kanamycin (25 ug/mL)
Cell Selection:	Neomycin



[View online »](#)

**ORF Nucleotide
Sequence:**

>RR217260 representing NM_001271195
 Red=Cloning site Blue=ORF Green=Tags(s)

TTTTGTAATACGACTCACTATAGGGCGGCCGGAATTCGTGCGACTGGATCCGGTACCGAGGAGATCTGCC
 GCC**CGATCGCC**

ATGTTTAAGTGTGGTCAGCCGTTTTGATTCTTGATTATCTTCTGGCTTCTGAAGGGAGGCCAACAA
 AAGAATCAGGATATGGCCTTAAATACTATCAACCTCTCACAAGATTACGACATAAGCAGGAAAAAGTCA
 AGAAAGTTCAAGAATCAAAGAATTTCTAATTCACGATGGACCTTTTGGATCTTGTGAAAAAAGTACTGT
 GGCTTGGGGAGGCACTGTGTTATCAGCAGAGAGACAAGGCACGCTGAGTGTACGTGCATGGACCTTGCA
 AACAGCACTACAAACCTGTGTGGATCTGATGGGGAATCTATGAGAACCCTGTGAAGTGCACAGAGC
 TGCCTGCCTGAAAAAGCAAAAGATCACCATTTGTTACAACGAAGACTGCTTCTTTAAAGGAGACAACTGC
 ATGACAACCTGAATACAGCAAAATGAAAAGTATGCTTTTAGACTTACAAAATCAAAAGTACATTACACAAG
 AAAATGAGAATCCCAACAGCGATGACATTTCTAGGAAGAAGACGTTGGTGGATCAATGTTCAAGTATTT
 TGATGCAGACAGTAATGGACTTGTAGATATTAATGAACTAACTCAGGTGATTAACAGGAGGAACCTGAAC
 AAAGACCTGTCTGACTGTACGTTGTATGATCTGCTCAAGTATGATGATTTCAATGCTGACAAGCACCTGG
 CTCTTGAAGAATCTACAGAGCATTTCAGGTGATCCAGTTGAGTCTGCCGAAGATCAGAGAGTAAGCAT
 TACCGCAGCCACCGTGGGACAGAGTGTGTTCTGAGCTGTGCCGTTGTGGGAACACTGAGACCCCTATC
 ATATGGAAGAGGAACAACATTGTTCTAAATAATTTAGATTTGGAAGACATCAATGACTTTGGCGATGATG
 GGTCTTATATATACCAAGGTTACCACAGTTCATATGGGAAATTAACCTGCTATGCAGATGGCTATGA
 AGATGTCCATCAGACACACATCTTCAAGTGAATGTCCCTCCAGTCATCCGAGTGTATCCAGAGAGTCAG
 GCCAGAGAACCTGGGGTAACTGCAAGCCTGAGGTGCCATGCAGAGGGCATAACCGACCCCTCAGCTGGGT
 GGTGGAAGAATGGAATCGATATTACACCAAAGCTCTCAAACAGCTCACGCTTCAAGCAAATGGCAGTGA
 GGTCCACATAAGCAATGTGCGTTATGAAGATACAGGAGCATACAGTGCATTGCTAGGAATGAAGCCGGT
 GTGGATGAAGACATCTTCTCTTTTTGTGGAAGATTCTGCTAGAAAGACACTAGCTAACATATTATGGA
 GAGAAGAAGTCTGGGAATGGGAACATGTTCTATGTGTTTTATGACGACGGAGTCAAAGTGATACAACC
 CACGGAATGTGAATTTACAGAGGCACATTAAGCCCAGTGAAGGCTCCTTGGATTTCCAGGATGAAGTCTGT
 CCCAAAGATGAAGAGGATGAAGTGCAGAGATGTGTTGGGCTTCGGCTGTTAATGTCAAAGACAAGTTCA
 TTTATGTTGCTCAGCCAACCTTTGGATAGAATCTTGATTGTTGATGTGCAGTCCAAAAAGTTGTTACGGC
 AGTGAGTACAGACCCTGTACCAGTTAAATTACACTACGACAAGTCACATGACCAGGTCTGGGTGCTGAGC
 TGGGGCAGCATGGAGAAGACATCGCCAACCTTACAGGTGATCACTCTGGCCAGCGGGAATGTGCCTCACC
 ACACCATCCACACACAGCCTGTCCGGAAACAGTTTGACAGAGTGGATGACTTTTTTCATCCACCCCAAC
 ACTTATTACTCACATGAGATTTGGATTTATCTTCTATAAAGATGAATCTGCACTACAAAAATTGAT
 CTCGAAACCATGTCTACATCAAAACAATTAGCCTGAAGGACTCAAAGTGCATTCCTCTGTCTTGGCAT
 ACAGCCATCTGGGAGGATACTACTTCAATAGCTGCAAGCCTGACATCACTGGAGCCATCCACCACAGCT
 TGTGGTGGACAGTGTGACTGATTCTATCATTGGCTCCAACAGTGTGACAGGCACTCCTTACGTCTCT
 CCAGACGGACACTATCTTGTGAGTGAATGATGTGAAAGGCTTGTGACAGTCCAATATATCACCATCC
 GAGGAGAAATCCTGGATGCCTTTGACATCCACCAACCTGCACATATCTGACCTGGCCTCCAGCCATC
 CTTACACAGAAGCCACCAGTACAACATCTACGGCAGTTCAAGCCAACAACAGATGTGCTTTTGTGGAG
 CTGTCCACTGGGAAGGTCAAGATGATCAAAGTCTCAAAGAACCTCTCAAGACAGAAGACTGGCCCTGGA
 GTCCGAAAAACAGGCACATCCAAGGCAAGTGGCCTGTTTGGACAGTACCTGATGACCCCTCAAAGATTC
 TCTCTTATCCTGGATGGTCGCCTTAATAAGTTAACTGTGAGATCACTGAGTTTCAGAAAGGAAATACA
 GTTGTGGGTTGGCGATGCC

ACCGTACGGGCGGCTCGAGCAGAACTCATCTCAGAAGAGGATCTGGCAGCAAATGATATCCTGGATT
 ACAAGGATGACGACGATAAGGTTTAA

Protein Sequence: >RR217260 representing NM_001271195
Red=Cloning site Green=Tags(s)

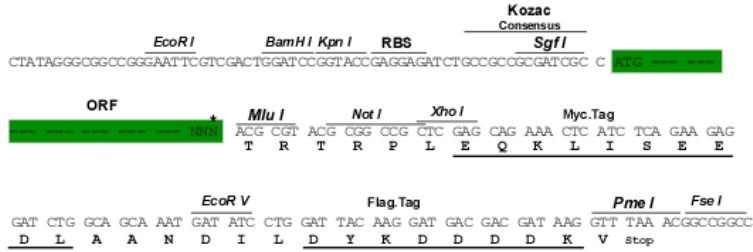
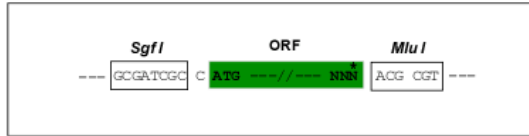
MFKCWSAVLILGFIFLASEGRPTKESGYGLKYYQPLTRLRHKQEKSQESSRIKEFLIHDGPFSGCENKYC
GLGRHCVISRETRHAECTCMDLCKQHYKPVCGSDGEFYENHCEVHRAACLKKQKITIVHNEDCFFKGDNC
MTTEYSKMKSMLLDLQNQKYITQENENPNSSDISRKKTLVDQMFKYFDADSNGLVDINELTQVIKQEELN
KDLSDCTLYDLLKYDDFNADKHLALEEFYRAFQVIQLSLPEDQRVSITAATVGQSAVLSCAVVGTLRPPI
IWKRNIVLNNLDLEDINDFGDDGSLYITKVTTVHMGNYTCYADGYEDVHQTHIFQVNVPPVIRVYVESQ
AREPGVTASLRCHAEGIPDPQLGWLKNGIDITPKLSKQLTLQANGSEVHISNVRYEDTGAYTCIARNEAG
VDEDISSLFVEDSARKTLANILWREEGLGIGNMFYVYDDGVKVIQPTCECFQRHIKPKSEKLLGFQDEVC
PKDEEDEVQRCVWASAVNVKDKFIYVAQPTLDRILIVDVQSQKVVQAVSTDPVPVKLHYDKSHDQVWVLS
WGSMEKTSPTLQVITLASGNVPHHTIHTQPVGKQFDRVDDFFIPTPTLIIITHMRFGLHKKDESALHKID
LETMSYIKTISLKDSCIPLSLAYSHLGGYYFISCKPDITGAIPPQLVVDVSVTDSIIGSNSDVTGTPYVS
PDGHYLVSVNDVKGLVRVQYITIRGEILDADFIDHTNLHISDLAFQPSFTEAHQYNIYSSSSQQTDLVFE
LSTGKVKMIKSLKEPLKTEDWPWSPKNRHIQSGSLFGQYLMTPSKDSLFLDGRNLKLNCEITEVQKGNL
VVWVGDA

TRTRPLEQKLISEEDLAANDILDYKDDDDKV

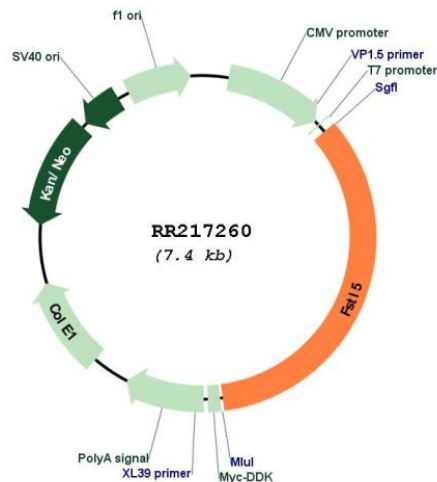
Restriction Sites: Sgfl-MluI

Cloning Scheme:

Cloning sites used for ORF Shuttling:



* The last codon before the Stop codon of the ORF

Plasmid Map:


ACCN: NM_001271195

ORF Size: 2541 bp

OTI Disclaimer: The molecular sequence of this clone aligns with the gene accession number as a point of reference only. However, individual transcript sequences of the same gene can differ through naturally occurring variations (e.g. polymorphisms), each with its own valid existence. This clone is substantially in agreement with the reference, but a complete review of all prevailing variants is recommended prior to use. [More info](#)

OTI Annotation: This clone was engineered to express the complete ORF with an expression tag. Expression varies depending on the nature of the gene.

Components: The ORF clone is ion-exchange column purified and shipped in a 2D barcoded Matrix tube containing 10ug of transfection-ready, dried plasmid DNA (reconstitute with 100 ul of water).

Reconstitution Method:

1. Centrifuge at 5,000xg for 5min.
2. Carefully open the tube and add 100ul of sterile water to dissolve the DNA.
3. Close the tube and incubate for 10 minutes at room temperature.
4. Briefly vortex the tube and then do a quick spin (less than 5000xg) to concentrate the liquid at the bottom.
5. Store the suspended plasmid at -20°C. The DNA is stable for at least one year from date of shipping when stored at -20°C.

RefSeq: [NM_001271195.1](#), [NP_001258124.1](#)

RefSeq Size: 5095 bp

RefSeq ORF: 2544 bp

Locus ID: 365823

Cytogenetics: 2q32

MW: 95.7 kDa