

Product datasheet for **RR217256**

Tas1r2 (NM_001271266) Rat Tagged ORF Clone

Product data:

Product Type:	Expression Plasmids
Product Name:	Tas1r2 (NM_001271266) Rat Tagged ORF Clone
Tag:	Myc-DDK
Symbol:	Tas1r2
Synonyms:	Aldh4a1; Gpr71; Tr2
Vector:	pCMV6-Entry (PS100001)
E. coli Selection:	Kanamycin (25 ug/mL)
Cell Selection:	Neomycin



[View online »](#)

ORF Nucleotide
Sequence:

>RR217256 representing NM_001271266
Red=Cloning site Blue=ORF Green=Tags(s)

TTTTGTAATACGACTCACTATAGGGCGGCCGGGAATTCGTCGACTGGATCCGGTACCGAGGAGATCTGCC
GCC**CGCATCGCC**

ATGGGTCCCAGGCAAGGACACTCTGCTTGTCTCTCTGCTGCATGTTCTGCCTAAGCCAGGCAAGC
TGGTAGAGAACTCTGACTTCCACCTGGCCGGGACTACCTCCTGGGTGGCCTCTTTACCCTCCATGCCAA
CGTGAAGAGCATCTCCACCTCAGCTACCTGCAGGTGCCAAGTGAATGAGTTCACCATGAAGGTGTTG
GGCTACAACCTCATGCAGGCCATGCGTTTCGCTGTGGAGGAGATCAACAAGTGTAGCTCCCTGCTACCCG
GCGTGTGCTCGGCTACGAGATGGTGGATGTCTGTTACCTCTCCAACAATATCCACCCTGGGCTCTACTT
CCTGGCACAGGACGACGACCTCTGCCATCCTCAAAGACTACAGCCAGTACATGCCCCACGTGGTGGCT
GTCATTGGCCCCGACAACCTCTGAGTCCGCCATTACCGTGTCCAACATTCTCTCATTTCCTCATCCCAC
AGATCACATACAGCGCCATCTCCGACAAGCTGCGGGACAAGCGGCACTTCCCTAGCATGCTACGCACAGT
GCCAGCGCCACCACCACATCGAGGCCATGGTGCAGCTGATGGTTCACCTCCAATGGAAGTGGATTGTG
GTGCTGGTGGAGCAGCAGGATTACGGCCGCGAGAACAGCCACCTGTTGAGCCAGCGTCTGACCAAAACGA
GCGACATCTGCATTGCCTTCCAGGAGGTTCTGCCCATACCTGAGTCCAGCCAGGTCATGAGTCCGAGGA
GCAGAGACAACCTGGACAACATCCTGGACAAGCTGCGGCGGACCTCGGCGCGCGTCTGGTGGTGTCTCG
CCCAGCTGAGCCTGTATAGCTTCTTTCACGAGGTGCTCCGCTGGAACCTCACGGGTTTTGTGTGGATCG
CCTCTGAGTCTGGGCTATCGACCCAGTTCGCTAACCTCACGGAGCTGCGCCACACGGGTACTTTTCT
GGGCGTACCATCCAGAGGGTGTCCATCCCTGGCTTCACTCAGTCCGAGTGCGCCGTGACAAGCCAGGG
TATCCCGTGCCTAACACGACCAACCTGCGGACGACCTGCAACCAGGACTGTGACGCTGCTTGAACACCA
CCAAGTCTTCAACAACATCCTTATACTTTCGGGGGAGCGGTGGTCTACAGCGTACTCAGCAGTTTA
CGCGGTGGCCCATGCCCTCCACAGACTCCTCGGCTGTAACCGGGTCCGCTGCACCAAGCAAAAGGTCTAC
CCGTGGCAGCTACTCAGGAGATCTGGCAGTCAACTTACGCTCCTGGGTAACCGGCTCTTCTTTGACC
AACAAAGGGACATGCCGATGCTCTTGGACATCATCCAGTGGCAGTGGGACCTGAGCCAGAATCCCTTCCA
AAGCATCGCTCCTATTCTCCACCAGCAAGAGGCTAACCTACATTAACAATGTGTCTGGTACACCCCC
AACAAACAGGTCCCTGTCTCCATGTGTTCAAGAGCTGCCAGCCAGGGCAAAATGAAAAAGTCTGTGGCC
TCCACCCTTGTGCTTCGAGTGTGGATTGTATGCCAGGCACCTACCTCAACCGCTCAGCAGATGAGTT
TAACTGTCTGTCTGCCGGTTCATGTGGTCTACAAGAACGACATCACTTGTCTCAGCGGCGGCT
ACCTTCTGGAGTGGCAGGAAGTCCCACCATCGTGGTGGCCACTGGCTGCCCTGGGCTTCTTCAGTA
CACTGGCCATTCTTTTCACTTCTGGAGACATTTCCAGACACCCATGGTGCCTCGGCCGGTGGCCCAT
GTGCTTCTGATGCTCGTGGCCCTGCTGTGGCGTTTGGGATGGTGGCCGTGTATGTGGGGCCCCCAGC
GTCTTCTCATGCTTCTGCCGACAGGCTTCTTCCCGTCTGCTTCTCCATCTGCCTATCCTGCATCACCG
TGCGCTCCTTCCAGATCGTGTGTCTTCAAGATGGCCAGACGCTGCCAAGTGCCTACAGTTTTGGAT
GCGTTACCACGGGCCCTATGTCTTCGTGGCCTTATCACGGCCATCAAGTGGCCCTGGTGGTGGCAAC
ATGCTGGCCACCACCATCAACCCATTGGCCGGACCGACCGGATGACCCCAACATCATGATCCTCTCGT
GCCACCCTAACTACCGCAACGGGCTACTGTTCAACACCAGCATGGACTTGTGCTGTCTGTGCTGGGTTT
CAGCTTCGCTTACATGGGCAAGGAGCTGCCACCAACTACAACGAAGCAAGTTCATCACTCTCAGCATG
ACCTTCTCCTTACCCTCCTCCATCTCCCTCTGCACCTTCACTGTCTGTGCACGACGGCGTGTGGTACCA
TCATGGACCTCCTGGTCACTGTGCTCAACTTCTGGCCATCGGCTGGGATACTTTGGCCCCAAGTGTTA
CATGATCCTTTTACCCGGAGCGCAACACCTCAGCCTATTTCAATAGCATGATCCAGGGCTACACCATG
AGGAAGAGC

ACGCGTACGCGGCCGCTCGAGCAGAACTCATCTCAGAAGAGGATCTGGCAGCAATGATATCCTGGATT
ACAAGGATGACGACGATAAGGTTTAA

Protein Sequence: >RR217256 representing NM_001271266
Red=Cloning site Green=Tags(s)

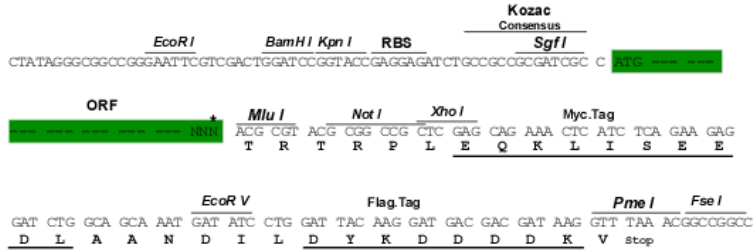
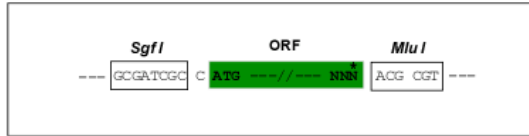
MGPQARTLCLLSLLLHVLPGKLVENSDFHLAGDYLLGGLFTLHANVKSISHLSYLQVPCNEFTMKVL
GYNLMQAMRFAVEEINNCSLLPGVLLGYEMVDVCYLSNNIHPGLYFLAQDDLLPILKDYSQYMPHVVA
VIGPDNSESAITVSNILSHFLIPQITYSAISDKLRDKRHFPMSMLRTVPSATHHIEAMVQLMVHFQWNWIV
VLVSDDDYGRENHLLSQRLTKTSDICIAFQEVLPPESSQVMRSEEQRQLDNILDKLRRTSARVVVVS
PELSLYSFFHEVLRWNFTGFVWIASWAI DPV LHNL TELRHTGTFLGVTIQRVSI PGFSQFRVRRDKPG
YPVPNTTNRRTTCNQDCDACLNTTKSFNNILILSGERVVYSVYSAVYAVAHALHRLLGCNVRCTKQKVY
PWQLLREIWHVNFLLGNRLFFDQQGDMPLLDIIQWQWDL SQNPFQSIASYSPTS KR LTYINNVS WYTP
NNTVPVSMCSKSCQPQMKKSVGLHPCCFECLDCMPGTYLNRSADEFNCLSCPGSMWSYKNDITCFQRRP
TFLEWHEVPTIVVAIALAALGFFSTLAILFIFWRHFQTPMVR SAGGPMCFMLMLVPLLLAFGMVPVYVGPPT
VFSCFCRQAFFTVCF S ICLSCITVRSFQIVCVFKMARRLPSAYSFWMRYHGPYVFAFITA I KVALVVG N
MLATTINPIGRTPDDPNIMILSCHPNYRNGLLFNTSMDLLL SVLGF SFAYMGKELPTNYNEAKFITLSM
TFSFTSSISLCTFMSVHDGVLVTIMDLLVTVLNFLAIGLGYFGPKCYMILFYPERNTSAYFN SMIQGYTM
RKS

TRTRPLEQKLI SEEDLAANDILDYKDDDDKV

Restriction Sites: Sgfl-MluI

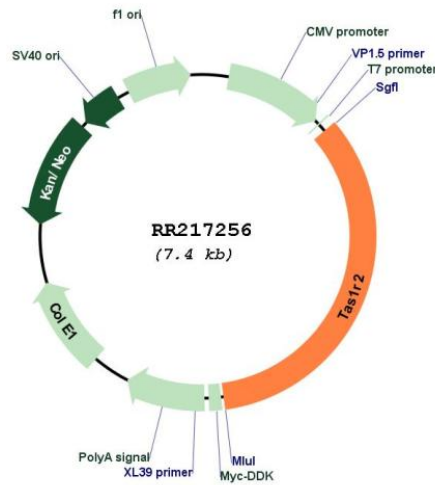
Cloning Scheme:

Cloning sites used for ORF Shuttling:



* The last codon before the Stop codon of the ORF

Plasmid Map:



ACCN:	NM_001271266
ORF Size:	2529 bp
OTI Disclaimer:	The molecular sequence of this clone aligns with the gene accession number as a point of reference only. However, individual transcript sequences of the same gene can differ through naturally occurring variations (e.g. polymorphisms), each with its own valid existence. This clone is substantially in agreement with the reference, but a complete review of all prevailing variants is recommended prior to use. More info
OTI Annotation:	This clone was engineered to express the complete ORF with an expression tag. Expression varies depending on the nature of the gene.
Components:	The ORF clone is ion-exchange column purified and shipped in a 2D barcoded Matrix tube containing 10ug of transfection-ready, dried plasmid DNA (reconstitute with 100 ul of water).
Reconstitution Method:	<ol style="list-style-type: none">1. Centrifuge at 5,000xg for 5min.2. Carefully open the tube and add 100ul of sterile water to dissolve the DNA.3. Close the tube and incubate for 10 minutes at room temperature.4. Briefly vortex the tube and then do a quick spin (less than 5000xg) to concentrate the liquid at the bottom.5. Store the suspended plasmid at -20°C. The DNA is stable for at least one year from date of shipping when stored at -20°C.
RefSeq:	NM_001271266.1 , NP_001258195.1
RefSeq Size:	2532 bp
RefSeq ORF:	2532 bp
Locus ID:	100270683
UniProt ID:	Q9Z0R7
Cytogenetics:	5q36
MW:	95.8 kDa
Gene Summary:	Putative taste receptor. TAS1R2/TAS1R3 recognizes diverse natural and synthetic sweeteners. [UniProtKB/Swiss-Prot Function]