

Product datasheet for **RR217251**

Trpc3 (NM_021771) Rat Tagged ORF Clone

Product data:

Product Type:	Expression Plasmids
Product Name:	Trpc3 (NM_021771) Rat Tagged ORF Clone
Tag:	Myc-DDK
Symbol:	Trpc3
Synonyms:	TrpC3c; Trrp3
Vector:	pCMV6-Entry (PS100001)
E. coli Selection:	Kanamycin (25 ug/mL)
Cell Selection:	Neomycin



[View online »](#)

ORF Nucleotide Sequence:

>RR217251 representing NM_021771
 Red=Cloning site Blue=ORF Green=Tags(s)

TTTTGTAATACGACTCACTATAGGGCGGCCGGGAATTCGTCGACTGGATCCGGTACCGAGGAGATCTGCC
 GCC**GCGATCGCC**

ATGGCGAGGCCGAGGGAGCCGAGCCGACGCCGCCGCCGGGGCTGGAGGGCGTCAACGGCGGGCTGGA
 GCCGCCCTGCCCGCGCGCCGCGCTCCCGGGGCCGACGCAGTACGGCAACATCCCTGTGGTGCACAA
 GATGCTGGAGGAGTCTCGCACGCTCAATGTCAACTGCGTGGACTACATGGGCCAGAATGCCTGCAGCTG
 GCCGTGGGCAATGAGCATCTGGAGGTGACCGAGCTGCTGCTGAAGAAGGAGAACCTGGCGGTATCGGTG
 ATGCGCTGCTGCTCGCCATCAGCAAAGGCTATGTGCGCATCGTGGAGGCCATCCTAGGCCACCCAGGCTT
 TGGCGCCAGCCGGCGCCTGACCCTCAGCCCTTGCAGCAAGAAGTGCAGGATGACGACTTCTATGCTTAC
 GACGAGGATGGCACACGCTTCTCACCTGACATCACGCCCATCATCTGGTGCAGTTCGCATAAATACG
 AGGTGGTGCACCTGCTGCTACTCAAGGGTGCACGCATCGAGCGGCCACACGACTACTTCTGTCGCTGCGC
 CGACTGTGCTGAGAAGCAAAGGCTTGTATGCCTCAGCCACTCAAGGTCTAGGATCAATGCCTACAAGGGA
 CTGGCCAGCCAGCATACTTGTGCTGTCCAGCGAGGACCTGTGCTCACAGCGCTGGAACCTCAGCAATG
 AGCTGGCCAAGCTGGCCAACATAGAGAAGGAGTTCAAGAATGACTACAGGAAGCTCTCCATGCAGTGCAA
 AGACTTCGTAGTAGGTGTGCTGGACCTGTGCCGGGACTCAGAGGAGGTGGAAGCCATTCTGAATGGAGAT
 CTGGAATCGGTGGAACCCCTGGAGAGACACGGGCAAGGCGTCGCTGAGTCGGGTCAAACCTTGCCATTA
 AATATGAAGTCAAAAAGTTTGTGGCTCACCCCACTGCCAACAGCAGCTTTTGACCATCTGGTACGAGAA
 CCTCTCGGGCCTTCGGGAGCAGACCATCGCTATCAAGTGTCTGGTCGTGTTGGTCGTGGCCTTGGGCCTT
 CCATCTCGCCATCGGCTACTGGATTGCACCTTGTAGCAGGCTGGGAAAATTTCTCGAAGCCCCTTCA
 TGAAGTTCGTGGCTCACGCTGCCTCCTTCATCATCTTCTGGTCTGCTTGTGTTCAACGCCCTCAGACC
 GTTTGAAGGCATCACACGCTGCCAACATCACGGTTATTGACTACCCCAAGCAAATCTTCAGGGTGAAG
 ACCACCCAGTTCCATGGACAGAAATGCTAATTATGGTCTGGTTCTCGGGATGATGTGGTCTGAGTGCA
 AGGAGCTGTGGCTGGAGGGGCCCGGGAGTACATCGTGCAGCTGTGGAACGTGCTTGACTTCGGGATGCT
 CTCCATCTTATTGCTGCCTTACCAGGTTCTAGCGTTTCTGCAAGCCACCAAAGCGCAGCAGTAT
 GTGGACAGCCACGTGCAGGAGAGCGACCTGAGCGAAGTCACTCCACCCAGAGGTTGAGTATTTACCT
 ATGCTAGAGATAAATGGTTCCTTCTGACCCTCAGATCATATCGGAAGGCCTCTATGCCATAGCTGTGGT
 GCTCAGCTTCTCCGGATCGGTACATTCTCCCTGCAAACGAGAGCTTTGGGCCCTTGACAGTCTCTCTG
 GGGAGGACTGTGAAGGACATATCAAGTTCATGGTTCTTTCATCATGGTGTTCCTGGCTTTCATGATTG
 GCATGTTCACTTTACTCCTACTACCTTGGGGCCAAAGTAAACCCTGCTTTTACCACGGTTGAAGAAAG
 TTTCAAGACTTTGTTTTGGTCCATATTTGGACTCTCTGAAGTGACTTCTGTTGTCCTCAAATATGCCAC
 AAATTCATAGAGAACATTGGCTATGTCCTTATGGAATATACAATGTAACATATGGTGGTCTGTTCTGCTCA
 ACATGCTGATTGCTATGATTAACAGCTCATACCAAGAAATCGAGGATGACAGTGTAGAGTGGAAAGTT
 TGCTCGTTCCAAACCTCTGGCTATCCTACTTCGATGATGGAAAAACATTACCTCCACCCCTTCACTCTGGTC
 CCTAGTCCAAAATCGTTTGTATTTTATCATGAGGATCACTAACTTTTCCAAATGCAGGAGGAGAAGAC
 TTAGAGTTTTTGAATCACACAGTTTTAACAGCATTCTCAATCAGCCAACACGATATCAGCAGATAATGAAA
 AGACTCATAAAAACGGTATGTTTTGAAAGCACAAAGTAGACAAAGAAAATGATGAGGTGAACGAAAGGTGAAC
 TGAAGAAATCAAGCAGGATATCTCCAGCCTTCGTTACGAACTTTTGAAGATAAGAGCCAAAGCGACGGA
 GGAACCTGGCCATCTTGATTATAAACTCAGTGAGAAACTGAACCCAGTGCCTGAGGTGTGAA

ACGCGTACGCGGCCGCTCGAGCAGAAACTCATCTCAGAAGAGGATCTGGCAGCAAATGATATCTGGATT
 ACAAGGATGACGACGATAAGGTTTAA

Protein Sequence: >RR217251 representing NM_021771
Red=Cloning site Green=Tags(s)

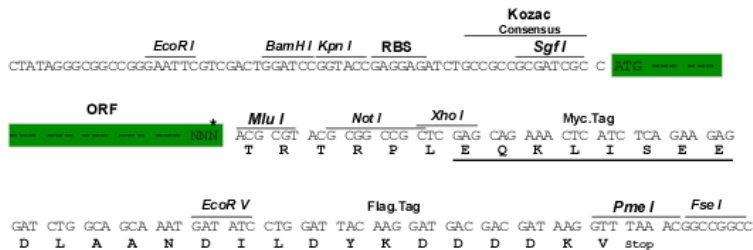
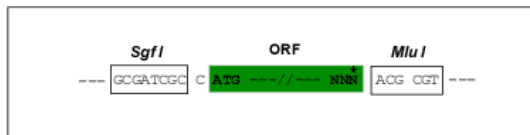
MARPREPSRSAAAGAGGASTAGWSRPARARRRRPRGPTQYGNIPVVRKMLEESRTLNVNVCVDYMGQNALQL
AVGNEHLEVTLLLLKKENLARIGDALLLAISKGYVRIVEAILGHPGFAASRRLTLSPCEQLRDDDFYAY
DEDGTRFSPDITPIILAAHCHKYEVVHLLLLKGARIERPHDYFCRCADCAEKQRDAFSHSRSRINAYKG
LASPAYLSLSEDPVLTALELSNELAKLANIEKEFKNDYRKL SMQCKDFVVGVLDCRDSEVEEAILNGD
LESVEPLERHGHKASLSRVKLAIKYEVKKFVAHPNCQQQLLTIWYENLSGLREQTIAIKCLVVLVVALGL
PFLAIGYWIAPCSRLGKILRSPFMKFVAHAASFII FLGLLVFNASDRFEGITTLPNITVIDYPKQIFRVK
TTQFTWTEMLIMVWVLGMMWSECKELWLEGPREYIVQLWNVLDFGMLSIFIAAFTARFLAFLQATKAQQY
VDSHVQESDLSEVTLPEVQYFTYARDKWLPSDPQIISEGLYAIIVLFSFRIAYILPANESFGPLQISL
GRTVKDIFKFMVLFIMVFLAFMIGMFI LYSYLGAKVNPFTTVEESFKTLFWSIFGLSEVTSVVLKYDH
KFIENIGYVLYGIYNVTMVVLLNMLIAMINSSYQEIEDSDVEWKFARSKLWLSYFDDGKTLPPFSLV
PSPKSFVYFIMRITNFSKRRRRLQKDLELGMGNSKSRLNLF TQNSRVFESHFNILNQPTRYQQIMK
RLIKRYVLKAQVDKENDEVNEGELKEIKQDISSLRYELLEDKSQATEELAILIHKLSEKLNPSALRCE

TRTRPLEQKLI SEEDLAANDILDYKDDDDKV

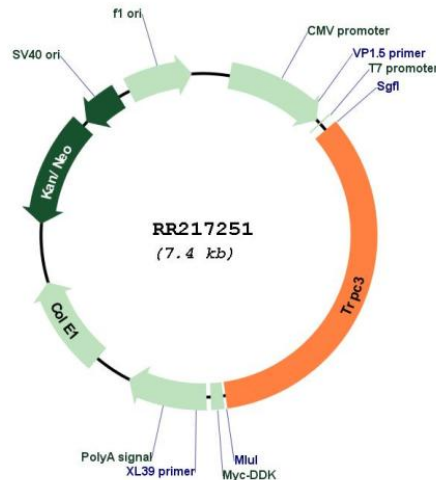
Restriction Sites: SgfI-MluI

Cloning Scheme:

Cloning sites used for ORF Shutting:



* The last codon before the Stop codon of the ORF

Plasmid Map:


ACCN: NM_021771

ORF Size: 2514 bp

OTI Disclaimer: The molecular sequence of this clone aligns with the gene accession number as a point of reference only. However, individual transcript sequences of the same gene can differ through naturally occurring variations (e.g. polymorphisms), each with its own valid existence. This clone is substantially in agreement with the reference, but a complete review of all prevailing variants is recommended prior to use. [More info](#)

OTI Annotation: This clone was engineered to express the complete ORF with an expression tag. Expression varies depending on the nature of the gene.

Components: The ORF clone is ion-exchange column purified and shipped in a 2D barcoded Matrix tube containing 10ug of transfection-ready, dried plasmid DNA (reconstitute with 100 ul of water).

Reconstitution Method:

1. Centrifuge at 5,000xg for 5min.
2. Carefully open the tube and add 100ul of sterile water to dissolve the DNA.
3. Close the tube and incubate for 10 minutes at room temperature.
4. Briefly vortex the tube and then do a quick spin (less than 5000xg) to concentrate the liquid at the bottom.
5. Store the suspended plasmid at -20°C. The DNA is stable for at least one year from date of shipping when stored at -20°C.

RefSeq: [NM_021771.2](#), [NP_068539.2](#)

RefSeq Size: 3420 bp

RefSeq ORF: 2517 bp

Locus ID: 60395

Cytogenetics: 2q25

MW: 95.6 kDa

Gene Summary: a calcium-activated cation channel [RGD, Feb 2006]