

Product datasheet for **RR217240**

Rhbdf2 (NM_001270834) Rat Tagged ORF Clone

Product data:

Product Type:	Expression Plasmids
Product Name:	Rhbdf2 (NM_001270834) Rat Tagged ORF Clone
Tag:	Myc-DDK
Symbol:	Rhbdf2
Synonyms:	Rhbdl6
Mammalian Cell Selection:	Neomycin
Vector:	pCMV6-Entry (PS100001)
E. coli Selection:	Kanamycin (25 ug/mL)



[View online »](#)

ORF Nucleotide Sequence:

>RR217240 representing NM_001270834
 Red=Cloning site Blue=ORF Green=Tags(s)

TTTTGTAATACGACTCACTATAGGGCGGCCGGGAATTCGTCGACTGGATCCGGTACCGAGGAGATCTGCC
 GCC**CGATCGCC**

ATGGCCTCAGCTGACAAGAATGGCAGAACCTCCCATCCGTGTCTGGTAGCCGCTCGAGAGCCGGAAGC
 CACCCAACCTATCCATCACTATCCCGCCACCAGAGACCCAGGCCCCGGGAGCAGGCTACCATGCTTCC
 TGAGAGGCCCAAGAACCAGCCTTCTGAAGAGCGTCAGCCTCCAGGAACCCCGGGACGATGGCAGGAT
 GGCACAGAGAAGCGCCCTGGCTTTCGCGCCAGGCCTCCCTGTCCAGAGCATCCGCAAGGGCACAGCCC
 AGTGGTTTGGGGTCAGCGCGACTGGGAGGGCAAGCGACAGAAGTGGCAGCGTCGACGCTGCACCACTG
 CAGCGTGCCTACGGCCGCTCAAGGCCTCGTCCAGAGAGAAGTGGAGCTGCCAGCCAGGAGGTGCCA
 TCCTTCCAGGGCACTGAGTCTCCAAAACCGTCAAGATGCCAAGATTGTAGACCCGCTGGCTCGGGGTC
 GGGCTTCCGCCACCCAGATGAGGTGGACCGCCTCACGCTGCCACGCGCTCTGACCCAGGGGTCTCT
 GTCGCTACGTCCTTCTCCAGCGTCCGCTCTGGCTACTCCATCTGCCCGCCGCAAGAGGATATCTGTT
 GCCCATATGAGCTTTCAGGCAGCCGCGGCCCTCCTCAAGGGGCGCTCCGTGCTGGATGCAACTGGGCAGC
 GGTGCCGGAATGTCAAGCGCAGCTTCGTCTACCCAGCTTCTGGAGGAGACGCCGTGGACGGAGCAGA
 CACCTTCGACTCCTTTTTAGTAAGGAAGAAATGAGTTCCATGCCTGATGATGTGTTTCGAGTCTCCCCA
 CTCTCTGTAGCTATTTCCGAGGTGTTCCATCCTCCGCTCCCTGTCTCCCTGATGGAGTGCAAAATCC
 CACTAAAAGAATACAGCAGCCGAGCTCCAGGTCCCGGGACCCAGCGTGGCAAGCGCATTGCCTCAAAGT
 CAAGCACTTTGCGTTTGACCGGAAGAAGAGGCATTACGGCCTGGGCGTGGTGGCAACTGGCTGAACAGA
 AGCTACCGGCGCAGCATCAGCAGCACCGTGCAGCGCAGCTGGAGAGCTTCGACAGCCACCGACCTACT
 TCACCTACTGGCTGACGTTTCGTTACATCCTCACCTTGTGTTGATCTGCACCTACGGCATCGGCACC
 TGTGGGCTTTGCCAGCAGCTCACACCCAGCTGGTGTGAAAAACAGAGGCGTGTATGAGAGCGTGAAA
 TACATCCAGCAGGAGAATTCTGGATTGCCCTAGCTCGATTGACCTCATCCACCTGGGAGCAAAGTTCT
 CACCCTGCATCCGGAAGGACCGCAGATTGAGCAGCTGATACGGAGGGAGCGTAACATCGAGCGCACCTC
 CGGCTGTGTCCAGAATGACCGCTCGGGCTGCATCCAGACTCTGAAGAAGGACTGCTCGGAGACTTTA
 GCCACGTTTGTGAAGTGGCAGAATGATACGGAGCCCTCAGACAAGTCTGACCTGAGCCAGAAGCAGCCAT
 CAGCAGTTGTGTCCACCAAGACCCAGGACCTGTGAAGAGCCAGCTCCAGTGGGGCCACATCTGGCC
 TGATGACATTACCAAGTGGCCGATCTGCACAGAGCAGGCCAGAGCAACCGCACAGGCTTGTTCACATA
 GACTGTAAGATCAAAGGCCGCCCTGCTGCATCGGCACCAAGGGCAGCTGTGAGATCACACACGGGAGT
 ATTGTGAGTTCATGCATGGCTATTTCCACGAAGAGGCAACACTCTGTTCCAGGTGCACTGTTTGGACGA
 GGTGTGTGGCCTTCTGCCTTTCCTCAACCTGAGATCCCCGACCAGTTCTACCGGATCTGGCTATCTCTG
 TTCTGCATGCTGGCATAGTGCCTGCTGTGTCTGTGGTCTTCCAAATGACCATCCTGAGGGACTTAG
 AGAAGCTGGCCGGCTGGCACCGCATCTCCATCATCTTTCATCCTCAGTGGTATTACAGGCAACCTGGCCAG
 CGCCATCTTCTCCCTATCGGGCAGAGGTGGGCCAGCCGGGTCGAGTTTGGCCTCCTCGCTGCCTC
 TTCGTGGAGCTATTCCAGAGCTGGCAGCTACTGGAGCGACCATGGAAGGCCTTCTCAACCTGTCCGCCA
 TTGTGCTTTTCTCTTTCATCTGTGGCCTCCTGCCCTGGATAGACAACATAGCGCACATCTTCGGTTTCT
 CAGTGGCATGCTCCTGGCCTTCGCTTCTGCCCTACATCACCTTGGCACCAGCGATAGGTACCGCAAG
 CAAGCCCTCATCCTGGTGTCACTGCTGGTCTTCGCCGGGCTCTTCGCTTCCCTGGTGTGTGGTTGTACA
 TCTACCCCATCAACTGGCCCTGGATCGAGTACCTCACCTGCTTTCCTTACCAGCCGCTTCTGTGAGAA
 GTACGAGCTAGACCAGGTGCTGCAC

ACGCGTACGCGGCCGCTCGAGCAGAAACTCATCTCAGAAGAGGATCTGGCAGCAATGATATCCTGGATT
 ACAAGGATGACGACGATAAGGTTTAA

Protein Sequence: >RR217240 representing NM_001270834
 Red=Cloning site Green=Tags(s)

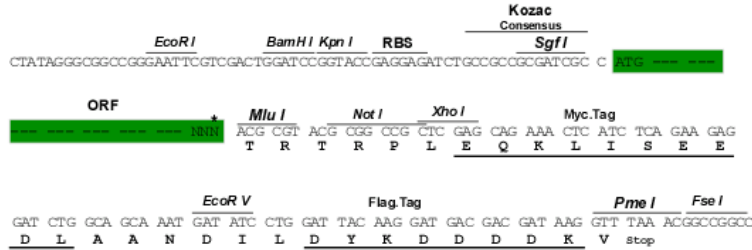
```
MASADKNGSNLPSVSGSRLQSRKPPNLSITIPPPETQAPGEQATMLPERPKNPAFLKSVSLQEPRGRWQD
GTEKRPGFRRQASLSQSIRKGTAWFGVSGDWEGKRQNWQRRSLHHCSVHYGRLKASCQRELELPSQEVP
SFQGTESPKCKMPKIVDPLARGRAFRHPDEVDRPHAAHAPLTPGVLSLTSFSSVRSYGSHLPRRKRISV
AHMSFQAAAAALLKGRSVLDATGQRCRNVKRSFVYPSFLEEDAVDGADTFDSFFSKEEMSSMPDDVFESPP
LSASYFRGVPSASPVPDGVQIPLKEYSSRAPGPGTQRGKRIASKVKHFAFDRKKRHYGLGVVGNWLNLR
SYRRSISSTVQRQLESFDSHRPYFTYWLTFFVHILITLLVICTYGIAPVGFAQHVTTLVLKNRGVYESVK
YIQQENFWIGPSSIDL IHLGAKFSPCIRKDRQIEQLIRRERNIERTSGCCVQNDRSGCIQTLKKDCSETL
ATFVKWQNDTEPSDKSDLSQKQPSAVVCHQDPRTCEEPASSGAHIWDDITKWPICTEQAQSNRTGLLHI
DCKIKGRPCCIGTKGSCIEITREYCEFMHGYFHEEATLCSQVHCLDEVCGLLPFLNPEIPDQFYRIWLSL
FLHAGIVHCLVSVVFQMTILRDLEKLAGWHRISIIFFILSGITGNLASAIFL PYRAEVGPAGSQFGLLACL
FVELFQSQWQLLERPWKAFFNLSAIVLFLFICGLLPWIDNIAHIFGFLSGMLLAFALPYITFGTSDRYRK
QALILVSLLVFAGLFASLVLWLYIYPINWPWIEYLTCFPFTSRFCEKYELDQVLH
```

TRTRPLEQKLI SEEDLAANDILDYKDDDDKV

Restriction Sites: Sgfl-MluI

Cloning Scheme:

Cloning sites used for ORF Shuttling:



* The last codon before the Stop codon of the ORF

- ACCN:** NM_001270834
- ORF Size:** 2475 bp
- OTI Disclaimer:** The molecular sequence of this clone aligns with the gene accession number as a point of reference only. However, individual transcript sequences of the same gene can differ through naturally occurring variations (e.g. polymorphisms), each with its own valid existence. This clone is substantially in agreement with the reference, but a complete review of all prevailing variants is recommended prior to use. [More info](#)
- OTI Annotation:** This clone was engineered to express the complete ORF with an expression tag. Expression varies depending on the nature of the gene.
- Components:** The ORF clone is ion-exchange column purified and shipped in a 2D barcoded Matrix tube containing 10ug of transfection-ready, dried plasmid DNA (reconstitute with 100 ul of water).

- Reconstitution Method:**
1. Centrifuge at 5,000xg for 5min.
 2. Carefully open the tube and add 100ul of sterile water to dissolve the DNA.
 3. Close the tube and incubate for 10 minutes at room temperature.
 4. Briefly vortex the tube and then do a quick spin (less than 5000xg) to concentrate the liquid at the bottom.
 5. Store the suspended plasmid at -20°C. The DNA is stable for at least one year from date of shipping when stored at -20°C.

RefSeq: [NM_001270834.1](#), [NP_001257763.1](#)

RefSeq Size: 3408 bp

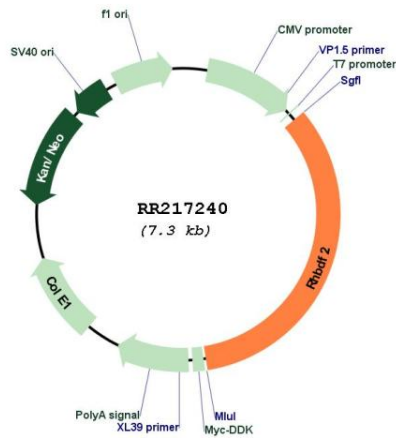
RefSeq ORF: 2478 bp

Locus ID: 303690

Cytogenetics: 10q32.2

MW: 93.3 kDa

Product images:



Circular map for RR217240