

Product datasheet for **RR217226**

Mapk7 (NM_001191547) Rat Tagged ORF Clone

Product data:

Product Type:	Expression Plasmids
Product Name:	Mapk7 (NM_001191547) Rat Tagged ORF Clone
Tag:	Myc-DDK
Symbol:	Mapk7
Synonyms:	Bmk1; Erk5; Prkm7
Mammalian Cell Selection:	Neomycin
Vector:	pCMV6-Entry (PS100001)
E. coli Selection:	Kanamycin (25 ug/mL)



[View online »](#)

ORF Nucleotide Sequence:

>RR217226 representing NM_001191547
 Red=Cloning site Blue=ORF Green=Tags(s)

TTTTGTAATACGACTCACTATAGGGCGGCCGGAATTCGTCGACTGGATCCGGTACCGAGGAGATCTGCC
 GCC**CGATCGCC**

ATGGCCGAACCGTTGAAGGAGGAGGACGGCGAAGATGGCTCTGGGGAACCCCTGGGCGGGTGAAGGCAG
 AACCCGTCCTCACTCCGCTGCATCTGTCTGGCCAAGAACCCTGGCCCTGCTCAAAGCCCGCTCCTTCGACGT
 GACCTTTGACGTGGGGGACGAGTACGAGATCATCGAGACCATAGGCAATGGGGCTACGGGGTGGTGTCC
 TCGGGCGCGCCGCTCACGGGTGAGGAGTGGCCATCAAGAAGATACCTAATGCTTTTGTGATGTGGTGA
 CCAATGCCAAACGGACCCTCAGGGAACGAAGATCCTCAAACACTTCAAACACGACAATATCATCGCCAT
 CAAGGACATCCTGAGGCCACTGTGCCCTATGGAGAATTCAGATCTGTCTACGTGGTACTGGACCTCATG
 GAAAGTGACCTACACCAGATCATTCACTCTTACAGCCGCTCACACTAGAACATGTGAGATACTTCTAT
 ACCAGTGTCTTCGGGGCCTCAAATACATGCACTCTGCTCAGGTCATCCACCGCATCTTAAACCCTTAA
 CCTTTTGGTCAATGAGAAGTGTGAGCTCAAGATTGGTACTTTGGAATGGCCCGTGGCCTGTGTACATCC
 CCTGCCGAGCACCAGTACTTCATGACTGAGTATGTGGCCACTCGTGGTACCGTGTCTCTGAACATATGC
 TTTTCGCTGCATGAGTACACACAGGCTATTGACCTCTGGTCTGTGGGCTGCATCTTTGGTGAAGTGTGGC
 TCGGGCAGAGCTTCCAGGCAAAAATATGTGCATCAGTTACAGCTGATCATGATGGTGTGGGAACT
 CCATCACCAGCTGTGATTCAGGCTGTGGGGGCTGAAAGGGTGGCAGCCTATATCCAGAGCCTGCCACAA
 GGCAGCCTGTACCTTGGGAGACAGTATACCCGGGTGTGACCGCCAGGCCCTCTCACTGTGGGACGCAT
 GTTGGGATTTGAACCCAGTGCCGAATCTCAGCTGCTGCTGCCCTTCGCCACCCCTTCTGGCTAAGTAC
 CACGACCCTGACGATGAGCCTGATTGCGCCCCACCTTTGACTTTGCTTTTGACCGTGAAGCCCTACCA
 GGGAGCGCATTAAAGGAGGCCATTGTGGCTGAGATTGAGGACTTCCATGCACGACGGGAGGCCATCCGCCA
 ACAAAATTCGCTTCCAGCCCTCTTTGCAGCCTGTGGCTAGTGAGCCTGTGTGTCCAGATGTGAGATGCC
 AGCCCTGGGCTCCAAGTGGAGACTGTGCCATGGAGTACCTCCTCCAGCACTACCACCATGCTCTGGCC
 CTGCCCTGACACTGTTGATCTGACTCTGCAGCCTGCCCGCCGCGCCAGTGAAGTGTCTCCGCCAAAAAG
 AGAGGGTGCCATCTCCGACAATACCAAAGCAGCCCTCAAAGTGTCTGCTCAAGTCCCTGAGGAGCCGG
 CTTGAGATGGGCCAGTGCACCCTTGGAGGCCCTGAACCTCGAAAGCCTGTGACAGCTCAGGAACGTC
 AGCGAGAGCGAGAAGAGAAGCGCAGGAGGCGACAAGAGAGGCCAAGGAGAGGGAGAAGCGACGACAAGA
 GCGGGAGCGCAAGGAGAGGGGGGCTGGCACCTTGGGGGGCCCTCTACTGACCCTTTGGCTGGATTGGTG
 CTCAGTGACAATGACCGAAGCCTGCTAGAGCGGTGGACTCGCATGGCTAGGCCTCTGTCCCTGCACCAG
 CACCAGCACCAGCAACACCAAAAACCAACCAACCAACACAGTCTCTGTCAACCCACTAGTCC
 TCCAATGGCCCTGTATCTCAGTCTACTGCTCCTTACAGCCTGCAGGCTCTATTCTGGTCTGCTCC
 CAGCCTGTTTGGCCACCCCTGGGCTGTTCCCGCAGCCTGCTGGCCCTGTCCCTGCCCTCTCCAGACTG
 CCCCTTCCACTAGCCTTTTGGCCTCCAGTCACTTGTGCCACCTAGTGGGTTGCCTGGTTCTGGTGGCCC
 AGAAGTCTGCCTTACTTCCATCTGGCCACCACTCCAGATCCTGGGCTCACCCCTCAGCCTTCTACA
 TCAGAGTCACTGATGTCAACCTGGTGACCCAGCAACTGTCCAAGTCTCAGGTGGAGACCCCTGCCTC
 CCGTGTCTCAGGCACTCAAAGGGCAGTGGGGTGGCTACGGTGTGGCTTTGACCTGGAGGAATCTT
 AAACCAATCTTTGACATGGGTGTGGCTGATGGGCCACAGGATAGCCAGGCAGACTCAGCCTCACTCTCA
 GCCTCCCTCCTTGTGACTGGCTTGGGGCCACGGCATGAACCCCGCTGACATTGAGTCTCTGCAGCGTG
 AGATCCAGATGGACTCCCAATGTTGTGTCTGACCTGCCTGACCTCCAAGAACC

ACGCGTACGCGGCCGCTCGAGCAGAAACTCATCTCAGAAGAGGATCTGGCAGCAAATGATATCCTGGATT
 ACAAGGATGACGACGATAAGGTTTAA

Protein Sequence: >RR217226 representing NM_001191547
 Red=Cloning site Green=Tags(s)

```

MAEPLKEEDGEDGSGEPPGRVKAEPVHSAASVVAKNLALLKARSDVTFDVGDEYEIIETIGNGAYGVVS
SARRRLTGQQVAIKKIPNAFDVVTNAKRTLRELKILKHFKHDNIIA IKDILRPTVPYGEFRSVYVLDLM
ESDLHQI IHSSQPLTLEHVRYFLYQLLRGLKYMHSQAQVIHRDLKPSNLLVNENCKIGDFGMARGLCTS
PAEHQYFMTEYVATRWRAPLMLSLHEYTQAIDLWSVGCIFGEMLARRQLFPGKNYVHQLQLIMMVLGT
PSPAVIQAVGAERVRAIYQSLPPRQVPWETVYPGADRQAL SLLGRMLRFEPSARISAAAALRHPFLAKY
HDPDDEPDCAPPDFDAFDREALTRERIKEAIVAEIEDFHARREGIRQQIRFQPSLQPVASEPVCPDVEMP
SPWAPSGDCAMESPPPALPPCSGPAPDVTDLTLQPAPPASELAPPKREGAISDNTKAALK AALLKSLRSR
LRDGPSAPLEAPEPRKPVTAQERQREEREKRRRRQERAKEREKRRQERERKERGAGTLGGPSTDPLAGLV
LSDNDRSLLERWTRMARPPVPAPAPAPAPTPTPTPTQSSAQPTSPPNGPVSQSTAPLQPAGSIPGPAS
QPVCPPPGVPVQAGVPVAPLQTAPSTLLASQSLVPPSGLPGSGAPEVLPHYFSPGPPPPDPGLTPQPST
SESPDNLVTQQLSKSQVEDPLPPVFSGTPKGGAGYGVGFDEEFLNQSFDMGVADGPDQSDASASLS
ASLLADWLEGHGMNPADIESLQREIQMDSMLLSDLPDLQEP
  
```

TRTRPLEQKLI SEEDLAANDILDYKDDDDKV

Restriction Sites: Sgfl-MluI

Cloning Scheme:


ACCN: NM_001191547

ORF Size: 2436 bp

OTI Disclaimer: The molecular sequence of this clone aligns with the gene accession number as a point of reference only. However, individual transcript sequences of the same gene can differ through naturally occurring variations (e.g. polymorphisms), each with its own valid existence. This clone is substantially in agreement with the reference, but a complete review of all prevailing variants is recommended prior to use. [More info](#)

OTI Annotation: This clone was engineered to express the complete ORF with an expression tag. Expression varies depending on the nature of the gene.

Components: The ORF clone is ion-exchange column purified and shipped in a 2D barcoded Matrix tube containing 10ug of transfection-ready, dried plasmid DNA (reconstitute with 100 ul of water).

Reconstitution Method:

1. Centrifuge at 5,000xg for 5min.
2. Carefully open the tube and add 100ul of sterile water to dissolve the DNA.
3. Close the tube and incubate for 10 minutes at room temperature.
4. Briefly vortex the tube and then do a quick spin (less than 5000xg) to concentrate the liquid at the bottom.
5. Store the suspended plasmid at -20°C. The DNA is stable for at least one year from date of shipping when stored at -20°C.

RefSeq: [NM_001191547.1](#), [NP_001178476.1](#)

RefSeq Size: 2738 bp

RefSeq ORF: 2439 bp

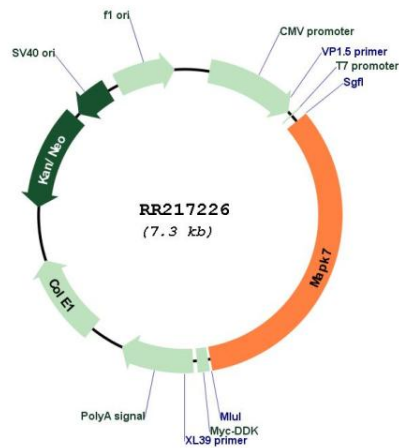
Locus ID: 114509

Cytogenetics: 10q22

MW: 88.5 kDa

Gene Summary: binds and phosphorylates myocyte enhancer factor 2 (Mef2); may regulate Mef2 transcription activator function [RGD, Feb 2006]

Product images:



Circular map for RR217226