

Product datasheet for **RR217169**

Arhgap17 (NM_001270694) Rat Tagged ORF Clone

Product data:

Product Type:	Expression Plasmids
Product Name:	Arhgap17 (NM_001270694) Rat Tagged ORF Clone
Tag:	Myc-DDK
Symbol:	Arhgap17
Synonyms:	Rich1
Mammalian Cell Selection:	Neomycin
Vector:	pCMV6-Entry (PS100001)
E. coli Selection:	Kanamycin (25 ug/mL)



[View online »](#)

ORF Nucleotide Sequence:

>RR217169 representing NM_001270694
 Red=Cloning site Blue=ORF Green=Tags(s)

TTTTGTAATACGACTCACTATAGGGCGGCCGGGAATTCGTCGACTGGATCCGGTACCGAGGAGATCTGCC
 GCC**CGGATCGCC**

ATGAAGAAGCAATTCAACCCGATGAAGCAGCTGGCCAACCCAGACTGTCCGCAGAGCTGAGAAGACAGAAG
 TCCTCAGTGAAGATCTGCTACAGATTGAACGTCGACTGGACACTGTCCGGTCAATGTGCCACCATTCA
 TAAGCGTTTGATAGCCTGCTTCCAAGGTCAGCATGGCACCCGATGCTGAGAGGAGACATAAAAAGTTCT
 CTGACAGCTCTCGCCAGAACATGCAGGAAGCTTCAGCCAGCTGGAAGAGTCTCTCTTGGGGAAGATGC
 TGGAAACCTGTGGGGATGCTGAGAATCAGCTGGCTTTTGAACCTCTCAGCATGAGGTCTTTGTGGAGAA
 GGAGATCATGGACCCTCTACGGCATAGCGGAGGTGGAGATTCCAACATCCAAAAGCAAAGGAAACAG
 CTTGCTAGATTGGTGTGGACTGGGATTAGTCAGAGCAAGATGGAACCAAGCACACAAGTCTTCAGGAA
 CCAACTTTCAGGGACTTCCATCTAAAATAGATACCCTAAAGGAAGAGATGGATGAAGCTGGAAATAAAGT
 CGAGCAGTGCAAGGATCAACTTGCAGCAGACATGTACAACCTCATGGCCAAGAAGGGGAATACGGCAAG
 TTCTTTGTGACGTTATTAGAAGCCCAAGCAGATTACCATAGAAAAGCATTAGCAGTCTTAGAAAAGGCC
 TTCCCGAAATGCGCGCCCATCAAGATAAATGGGCAGAGAAGCCAGCCTTCGGTACACCTCTGGAGGAACA
 CCTGAAGAGGAGTGGACGTGAGATCGCTCTCCCTATTGAGGCCTGCGTCACTGTTGTTACTGGAGACTGGC
 ATGAAGGAGGAGGGCCTTTTTCGGATCGGAGCTGGAGCCTCCAAGTTGAAGAAGCTGAAAGCTGCTCTCG
 ACTGCTCCACGTCTCACCTGGATGAGTTCTATTCAGACCCCCATGCTGTCCGAGGTGCTTTAAAGTCTTA
 TTTGCGGGAAGTCCCTGAGCCCTAATGACTTTTCAAGCTCGCCAGACCCAGTATGTTAATAAAATGACTCCTAG
 CAGGATCAAGACAAAAAATCAATATTTATGGACAACATGTGAGAAGTTGCCGCCACAAAAATTTTGTTA
 ACTTTAGGTATTTAATCAAGTTCTTGCAGGCTCGCCAGACCCAGTATGTTAATAAAATGACTCCTAG
 CAACATAGCCATCGTGTGGGCCCTAACCTCCTGTGGCCAAACAAGAAGGAACCCCTGGCTGAAATAGCG
 GCTGCCACATCTGTCACGTGGTCCGAGTATTGAACCTATCATCCAGCATGCCGATTGGTTCTTCCCCG
 GAGAGGTAGAATTCAATGTATCAGAAGCATTCTGCTCTTGCTACCCCAAATTCTAATCACTCATCCCA
 TACTGGAATGACTCTGACTCGGGGACTCTGGAGAGGAAGCGACCCGCCAGCATGGCAGTATGGAAGGG
 GACTTGGTGAAGAAGGAGAGTCTCCAAAACCCAAAGACTCTGTGTCTGCAGCTGCCCTGTGGCAGGAA
 GAAACAGCAACCAGATAACCACGGTCCCAAACCCAGGCCAGACAGGTGGCAACTCCCATCAGCTCTCAGT
 AGGCACAGCTCACAGTGCAGCTGGCCCCAGCCGCACACTCTGCGTGCAGCTGTGAAGAAACCTGCTCCG
 GCACCCCCAAACCAGGAAACCCACCTCCTGGCCACCCTGGAGGACAGAGCTCTCCAGGCACAGGCACAT
 CCCCAAAGCCAAGCACCCGAAGCCATCACCGCTCAGCAGCAGCAGCAGCAACAACAACAACAGCA
 GCAGCAACAACAACAGCAGCAACAACAACAACAACAACAGCAGCAGCAGCAGACCCCGGGCATGCGCCGC
 GTTCCAGCAGCTGCCTCCTATCCAGGCACCCAAACCACCACCACCCGACGCCCCCCACACAGCCTCGGC
 TGGGTGAACAGGGACCAGAGCCAGGCCACGCCACCTCAGACCCCCACACCACCAGCACCACCCCC
 GGCCAAGCAGAATTCATCCCAAAGCGAGACCACACAGTGCATGGAACCTCCCAAGGCCACGGCCAGTG
 CCTAAACCCCGCAACCGGCTAGTGTGCCACCACCCCGAATCCACCTGGCACCCACATGGGGGATGGTG
 GCCTCACACCTTCAGTGCCACAGCCTCCAGAATCGTCACTGATGCCCTTCCCGGTGCCCTCACAGGTGG
 GGAAGGTTCCAGAAC

ACGCGTACGCGGCCGCTCGAGCAGAAACTCATCTCAGAAGAGGATCTGGCAGCAAATGATATCCTGGATT
 ACAAGGATGACGACGATAAGGTTTAA

Protein Sequence: >RR217169 representing NM_001270694
 Red=Cloning site Green=Tags(s)

```
MKKQFNRMKQLANQTVGRAEKTEVLSDLLQIERRLDTVRSMCHSHKRLIACFQQGHGTAERRHKKLP
LTALAQNMQEASQLEESLLGKMLETCGDAENQLAFELSQHEVFVEKEIMDPLYGI AEVEIPNIQQRKQ
LARLVLDWDSVRARWNQAHKSSGTNFQGLPSKIDTLKEEMDEAGNKVEQCKDQLAADMYNFMAKEGEYK
FFVTLLEAQADYHRKALAVLEKALPEMRAHQDKWAEKPAFGTPLEEHLKRSGREIALPIEACVMLLLETG
MKEEGLFRIGAGASKLKKLKAALDCSTSHLDEFYSDPHAVAGALKSYLRELPEPLMTFSLYEWTQVASV
QDQDKKLQYLWTTQCQLPPQNFVNFRLIKFLAKLAQTSVNMKTPSNIAIVLGPNNLWAKQEGTLAEIA
AATSVHVAVIEPIIQHADWFFPGEVEFNVSEAFVPLATPNSNHSHTGNDSDSGTLERKPASMAVMEG
DLVKKESPPKPKDSVSAAPVAGRNSNQITTVPNQAQTGGNSHQLSVGTAHSAAGSPHTLRRAVKPPAP
APPKPGNPPPGHPGGQSSPGTGTSPKPTRSPSPPPQQQQQQQQQQQQQQQQQQQQQQQQQQQTPGMRR
CSSSLPPIQAPNHPPPQPTQPRLGEQGPEPGTPPQTPTPPSTPPPAKQNSSQSETTQLHGTLPRPRPV
PKPRNRPSPVPPPNPPGTHMGDGLTPSVPTASRIVTDALPGALTGGEQFN
```

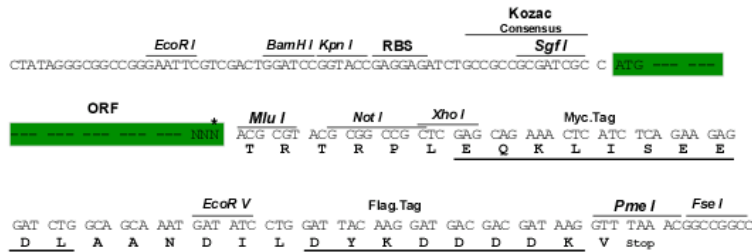
TRTRPLEQKLISEEDLAANDILDYKDDDDKV

Restriction Sites:

SgfI-MluI

Cloning Scheme:

Cloning sites used for ORF Shuttling:



* The last codon before the Stop codon of the ORF

ACCN: NM_001270694

ORF Size: 2256 bp

OTI Disclaimer: The molecular sequence of this clone aligns with the gene accession number as a point of reference only. However, individual transcript sequences of the same gene can differ through naturally occurring variations (e.g. polymorphisms), each with its own valid existence. This clone is substantially in agreement with the reference, but a complete review of all prevailing variants is recommended prior to use. [More info](#)

OTI Annotation: This clone was engineered to express the complete ORF with an expression tag. Expression varies depending on the nature of the gene.

Components: The ORF clone is ion-exchange column purified and shipped in a 2D barcoded Matrix tube containing 10ug of transfection-ready, dried plasmid DNA (reconstitute with 100 ul of water).

Reconstitution Method:

1. Centrifuge at 5,000xg for 5min.
2. Carefully open the tube and add 100ul of sterile water to dissolve the DNA.
3. Close the tube and incubate for 10 minutes at room temperature.
4. Briefly vortex the tube and then do a quick spin (less than 5000xg) to concentrate the liquid at the bottom.
5. Store the suspended plasmid at -20°C. The DNA is stable for at least one year from date of shipping when stored at -20°C.

RefSeq: [NM_001270694.1](#), [NP_001257623.1](#)

RefSeq Size: 3192 bp

RefSeq ORF: 2259 bp

Locus ID: 63994

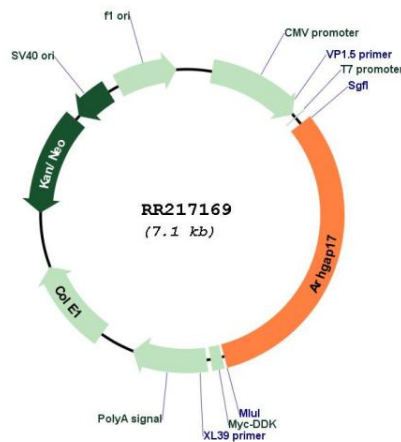
UniProt ID: [Q99N37](#)

Cytogenetics: 1q36

MW: 82.5 kDa

Gene Summary: activates RhoA, Rac1, and Cdc42 GTPases, plays a role in regulation of calcium ion dependent exocytosis, may regulate actin filament reorganization [RGD, Feb 2006]

Product images:



Circular map for RR217169