

Product datasheet for **RR217167**

Adam32 (NM_001170582) Rat Tagged ORF Clone

Product data:

Product Type:	Expression Plasmids
Product Name:	Adam32 (NM_001170582) Rat Tagged ORF Clone
Tag:	Myc-DDK
Symbol:	Adam32
Mammalian Cell Selection:	Neomycin
Vector:	pCMV6-Entry (PS100001)
E. coli Selection:	Kanamycin (25 ug/mL)



[View online »](#)

ORF Nucleotide Sequence:

>RR217167 representing NM_001170582
 Red=Cloning site Blue=ORF Green=Tags(s)

TTTTGTAATACGACTCACTATAGGGCGGCCGGGAATTCGTCGACTGGATCCGGTACCGAGGAGATCTGCC
 GCC**CGGATCGCC**

ATGCTGGGCGCCATGCTGCACACTGCTGCTGCTGCTGGCGGAGCTGGGGCCCTTCTGGCATCAGGAC
 CCGATTCTCAAAGTTCATTTCTAGAAATCATATTTCCAGAGAAAATTGAAAGATAAAAACAACTCAGAAGA
 ACAGATATCCTATGTTATTCCAATAAACAGAAGAAGTACACTGTGCACCTCCAGAAAAGATATTTTTTA
 ACAAATCGTTTTATGTTTATATGTATAATCAAGGATCTACGAGTTTTCTTCAAACATTCCGGCTC
 AGTGCTATTATCAAGGATACATCAAAGGCTATCCGGGCTCTGTCGCCACCCTCAGCACGTCTGGACT
 GAGAGGGTCTTGCAAGTTGAGAATGTGTCCTACGGAATTGAGCCCTGGAGTCTGCAGCGACATCTCAG
 CACATTGTTTATGAGCTAGGGAAGGAGAGAAGGAATTACTGTTTAAACAAAACAGCAGGAACCTAGAGA
 TGCCAACGAACTACGGCATTAAATCAACAAAAGCCAAAATCACCTCAAAACACTGTTTTCCCTCTA
 TCTAGAGATGACTATTGGTGGACAAGGCTTTGTATGATTACTTGGGCTCTGACAGCATGATTGAACT
 AATAAAGTCATTGAAATCATCAGCCTTGTAAATTCGGTGTGTTGAACAATTCAAGTTACTATTGTGTTGT
 CCTCATTGGAGTTATGGTCAGATAAAAAAAGATTCCAACAGTTGGTGAAGCAGACGAATTATTGCGTAG
 ATTTTCAGAATGGAAGCAATCTTATCTCACCTAAGACCTCATGATGTTGCGTATCTATTCAATTTATAAC
 GAGCAGCCAAATTACATGGGAGCAACGTACCCTGGGAAGATGTGTACCGCCCTACTCTGCAGGAATCA
 CGATGTATCCCAAGGACATGACCTTGGAGGCTTTTCAGTCATCCTCACCCAGATGCTGGGGCTCAGTCT
 GGGAAATCATATGACAATCCGGAGAAAATGTCAGTCTCGGAAAAGTCTGCATCATGAATCCAGGGCA
 ATGCAATATACAGGTGTGAAAACATTTAGCAACTGCAGTTCGAATGACTTTGAACGTTTTAAATTTGAACG
 AGGGTGCCAAATGTCTGCAGAATAAGCCAGAGATGCAAAGGAGTCCAAGAGCAGTCTGTGGAAATGGCAA
 AGTGGAAGGTGACGAAATTTGTGACTGTGGCAGCCAACAACAATGTGGGGCTAACAGCTGTTGTGAGCCT
 ACATCTTGTTCTGAAGAGTGGAAAAGCTTGTGACAGTATGTCTCCCTCAGCAACATGCTGCAAAGATT
 GTCAATTTTTACCAGATAAACATGAATGTAGGCCAGCAGCAATATGACTGTGACATTGCTGAAGTCTG
 CAATGGGAGCTCAGGACAATGTCCACCTGATATAATTTTATCCAACGGGATTATTTGTGGAGAAGGTGGG
 ACTGTCTGTTATAATGAAAACGCCCCAACCTGGACAGAGCATGCGAGGCTATGTATGGACTAGGTTCAA
 CCAATGCTCCATTTGCTGCTATGAAGAAATCCAGGGCCAAAATGATAGGTTTGGCAACTGTGGCAAAGA
 CCAGCAAAACAGATACATATTCTGTGGATGGAGGAATCTCATATGTGGGAGATTAGTTTGTACGTACCT
 AGCAAACCTCCTTTCATCCACCAACATCAGCACCGCTTCCGTGATCTATGCTTTTGTGAGAGACAAAG
 TTTGTATATCTGTGGACTTTGGATCGAGCGTCAAGGAAGATCCACTCAGGGTTCTTAATGGTGTGTATG
 TGATCTTGATAGGATTTGCTTAAATGGCGTGTGCGTGGAAATCGAGATTTCTTAAGGCTCAATCAACATCG
 TGTGCAGAAGCCAAGTGAACGGGCATGGAGTGTGCACTTCCCGTGGTACTGCCATTGTTCTGAGGGCT
 TTCAACCTCCCAGCTGTACACCTAAGGAAGGAGGAGACTCATCTTGGTATGGCAGGCAAGGTCTGCCAT
 GGAAGGAGCTTCTAGGAACCGTGAGAAGAAGTGGCTCTTAAGTTTGTACATTGTCTTAATTATCCTCACG
 ACAGCAGTCGCTTAGGCACAGGGTGGAAAGGCTTAAAAAGTGTGCTTCAAGGAGGAGGAATCCATGA
 GCAGCGAAAGCAAATCAGAAGACAACACTCAAACGTACAACAGCAGATCAAAATCCGAGGCAAGCAGTGG
 ATCACCTACGAGCAGT

ACGCGTACGCGGCCGCTCGAGCAGAAACTCATCTCAGAAGAGGATCTGGCAGCAAATGATATCCTGGATT
 ACAAGGATGACGACGATAAGGTTTAA

Reconstitution Method:

1. Centrifuge at 5,000xg for 5min.
2. Carefully open the tube and add 100ul of sterile water to dissolve the DNA.
3. Close the tube and incubate for 10 minutes at room temperature.
4. Briefly vortex the tube and then do a quick spin (less than 5000xg) to concentrate the liquid at the bottom.
5. Store the suspended plasmid at -20°C. The DNA is stable for at least one year from date of shipping when stored at -20°C.

RefSeq: [NM_001170582.1](#), [NP_001164053.1](#)

RefSeq Size: 2399 bp

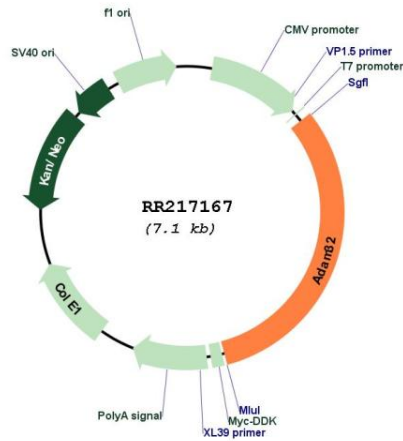
RefSeq ORF: 2259 bp

Locus ID: 361170

Cytogenetics: 16q12.4

MW: 83.1 kDa

Product images:



Circular map for RR217167