

Product datasheet for **RR217161**

Ext1 (NM_001130540) Rat Tagged ORF Clone

Product data:

Product Type:	Expression Plasmids
Product Name:	Ext1 (NM_001130540) Rat Tagged ORF Clone
Tag:	Myc-DDK
Symbol:	Ext1
Mammalian Cell Selection:	Neomycin
Vector:	pCMV6-Entry (PS100001)
E. coli Selection:	Kanamycin (25 ug/mL)



[View online »](#)

ORF Nucleotide
Sequence:

>RR217161 representing NM_001130540
Red=Cloning site Blue=ORF Green=Tags(s)

TTTTGTAATACGACTCACTATAGGGCGGCCGGAATTCGTGACTGGATCCGGTACCGAGGAGATCTGCC
GCC**CGGATCGCC**

ATGCAGGCCAAAAACGCTATTTTCATCCTGCTCTCAGCTGGCTTGTCTCGCCCTTTTGTTTATTTTG
GAGGCGTGCAGTTTAGGGCATCGAGGAGCCACAGCCGGAGAGAAGAGCACAGTGGTTCGGAATGGCTTGCA
CCAACCCAGTCCGGATCATTCTGGCCCGCTCCCGGACGCTCTGCGCCCTTCTTTCTTGGGATCAA
TTGAAAAACGAGGATTCCAGCGTGCACATTTCCCGCCGAGAGCGGGACGCCAACTCGAGCATCTACA
AAGGCAAGAAGTCCGCATGGAGTCTGCTTCGATTTCCACCTTTGCAAGAAAAACGGCTTCAAAGTCTA
CGTCTACCCGAGCAGAAAGGGGAGAAAATTGCCGAAAGTTACCAAAACATTCTAGCGGCCATCGAGGGC
TCCAGTTCTACACCTCGGACCCAGCCAGGCGTGCCTTTTGCCTGAGTCTGGATACTTTAGACAGAG
ACCAGTTATCACCTCAGTATGTGCACAATTTGAGATCCAAGTGCAGAGTCTCCACTTGTGGAACAATGG
TAGGAATCATTTAATTTTAAATTTATATTTCTGGCACTTGGCTGACTACCCGAGGACGTGGGGTTTGAC
ATCGGCCAGGCGATGCTGGCCAAAGCCAGCATCAGTACTGAAAACCTCCGACCAAACCTTTGATGTTCTA
TTCCCTCTTTTCTAAGGATCATCCAGGACAGGAGGGGAGAGGGGGTTTTTGAATTTAACACCATCCC
TCCCTCAGGAAGTACATGCTGGTATTCAAGGGGAAGAGGTACCTGACAGGGATAGGGTCAGACACCAGG
AATGCCTTATATCACGTCATAACGGGGAGGACGTCTTGTCTCCTACCACCTGCAAGCATGGCAAAGACT
GGCAAAGCACAAGGATTCTCGCTGTGACAGAGACAACACCGAGTATGAGAAATATGATTATCGGAAAT
GCTGCACAATGCCACTTTCTGTCTGGTTCTCGTGGTTCGAGGCTTGGTCCCTCAGATTCTGGAGGCT
TTGCAGGCTGCCTGTGTCCCTGTAATGCTCAGCAATGGATGGGAGTTGCCATTCTCCGAAGTGATAAAT
GGAACCAAGTCCCGTCATAGCGGATGAGAGATTGCTATTACAGATTCTTCTACAATCAGGTCTATTCA
TCAGGATAAAAATCCTAGCACTTAGACAGCAGACAGTTCCTTGTGGGAGGCTTATTTTCTTCAGTTGAG
AAGATTGTATTAACACTAGAGATTATTCAGGACAGAATATTCAAGCACATATCACGTAACAGTTTAA
TATGGAACAAACATCCTGGAGGATTGTTCTGCTCCTACCACAGTATTCATCTACCTGGGAGATTTTCTTA
CTACTATGCTAATTTAGGTCTAAAGCCCCCTCCAAATCACTGCAGTATCCATGCTGTGACCCCCCTG
GTCTCTCAGTCCCAGCCAGTGTGAAGCTTCTTGTGGCAGCAGCCAAATCCAGTACTGTGCACAGATTA
TAGTTCTGTGGAATTGTGACAAGCCTCTACCAGCCAAACACCGCTGGCCTGCCACTGCCGTGCCTGTCAT
CGTCATTGAAGGAGAAAGCAAGTTATGAGCAGCCGTTTCTGCCCTATGACAACATCATCACTGATGCT
GTGCTCAGCCTTGATGAGGACACTGTGCTTTCAACCACGGAAGTGGATTTGCCTCACTGTATGGCAGA
GCTTCCCAGGAGGATTGTGGGATATCCTGCACGAGCCATTTCTGGGATAACTCAAAGGAGCGATGGGG
ATATACATCCAAGTGGACGAATGACTACTCCATGGTGTGACAGGAGCTGCTATCTACCACAAATATTAT
CACTACCTGTATTTCCATTACCTGCCAGCCAGCCTGAAGAACATGGTAGACCAACTGGCCAACTGTGAGG
ACATTCTCATGAATTTCTGGTGTCTGCTGTGACGAAAATGCCTCCAATCAAAGTGACCCAGAAGAAACA
GTATAAGGAGACAATGATGGGACAGACTTCCCAGCATCTCGTGGGCTGACCCTGACCACTTTGCCAG
CGACAGAGCTGCATGAATACGTTTCCAGCTGGTTTGGCTACATGCCGCTGATCCACTCTCAGATGAGGC
TCGACCCGGTCTCTTTAAAGACCAAGTCTCAATCCTGAGGAAGAAATACAGAGACATTGAACGACTT

ACGCGTACGCGGCCGCTCGAGCAGAAACTCATCTCAGAAGAGGATCTGGCAGCAAATGATATCCTGGATT
ACAAGGATGACGACGATAAGGTTTAA

Protein Sequence: >RR217161 representing NM_001130540
 Red=Cloning site Green=Tags(s)

MQAKKRYFILLSAGSCLALLFYFGGVQFRASRSHSRREEHSGRNLHQSPDHFWRFPDALRPFPPWDQ
 LENEDSSVHISPRQKRDANSSIYKGGKCRMESCDFTLCKKNGFKVYVYPQQKGEKIAESYQNILAAIEG
 SRFYTSDPSSQAACLFVLSLDTLDRDQLSPQYVHNLRSKVQSLHLWNGRNLHIFNLYSGTWPDYTEDVGF
 IGQAMLAKASISTENFRPNFDVSIPLFSKDHPRGGGERGFLKFNTIPPLRKYMLVFKGKRYLTGIGSDTR
 NALYHVHNGEDVLLLTTCKHGKDWQKHKDSRCRDNTEYEKYDYREMLHNATFCLVPRGRRLGSRFLEA
 LQAACVPVMLSNGWELPFSEVINWNQAAVIGDERLLLQIPSTIRSIHQDKILALRQQTQFLWEAYFSSVE
 KIVLTLEIIQDRIFKHISRNSLIWNKHPGGLFVLPQYSSYLGDFPYYYANLGLKPPSKFTAVIHAVTPL
 VSQSQPVLKLLVAAAKSQYCAQIIVLWNCDKPLPAKHRWPATAVPVIVIEGESKVMSSRFLPYDNIITDA
 VLSLDEDTVLTSTEVDFAVTWQSFPERIVGYPARSHFWDNSKERWGYTSKWTNDYSMVLTGAAIYHKYY
 HYL YSHYLPASLKNMVDQLANCEDILMNFLVSAVTKLPPIKVTQKKQYKETMMGQTSRASRWADPDHFAQ
 RQSCMNTFASWFGYMLIHSQMRLDPVLFKDQVSI LRKKYRDIERL

TRTRPLEQKLI SEEDLAANDILDYKDDDDKV

Restriction Sites:

Sgfl-MluI

Cloning Scheme:

Cloning sites used for ORF Shuttling:



* The last codon before the Stop codon of the ORF

ACCN: NM_001130540

ORF Size: 2238 bp

OTI Disclaimer: The molecular sequence of this clone aligns with the gene accession number as a point of reference only. However, individual transcript sequences of the same gene can differ through naturally occurring variations (e.g. polymorphisms), each with its own valid existence. This clone is substantially in agreement with the reference, but a complete review of all prevailing variants is recommended prior to use. [More info](#)

OTI Annotation: This clone was engineered to express the complete ORF with an expression tag. Expression varies depending on the nature of the gene.

Components: The ORF clone is ion-exchange column purified and shipped in a 2D barcoded Matrix tube containing 10ug of transfection-ready, dried plasmid DNA (reconstitute with 100 ul of water).

Reconstitution Method:

1. Centrifuge at 5,000xg for 5min.
2. Carefully open the tube and add 100ul of sterile water to dissolve the DNA.
3. Close the tube and incubate for 10 minutes at room temperature.
4. Briefly vortex the tube and then do a quick spin (less than 5000xg) to concentrate the liquid at the bottom.
5. Store the suspended plasmid at -20°C. The DNA is stable for at least one year from date of shipping when stored at -20°C.

RefSeq: [NM_001130540.1](#), [NP_001124012.1](#)

RefSeq Size: 3474 bp

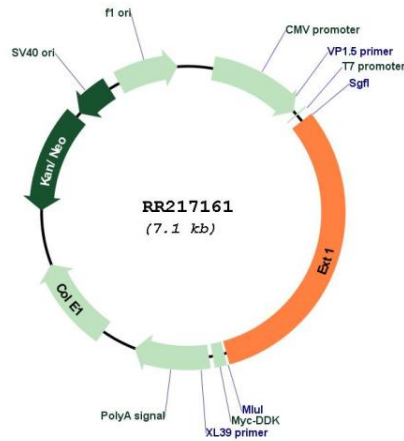
RefSeq ORF: 2241 bp

Locus ID: 299907

Cytogenetics: 7q31

MW: 86.3 kDa

Product images:



Circular map for RR217161