

Product datasheet for **RR217144**

Ldb3 (NM_001277165) Rat Tagged ORF Clone

Product data:

Product Type:	Expression Plasmids
Product Name:	Ldb3 (NM_001277165) Rat Tagged ORF Clone
Tag:	Myc-DDK
Symbol:	Ldb3
Synonyms:	RGD1564875; ZASP
Mammalian Cell Selection:	Neomycin
Vector:	pCMV6-Entry (PS100001)
E. coli Selection:	Kanamycin (25 ug/mL)



[View online »](#)

ORF Nucleotide Sequence:

>RR217144 representing NM_001277165
 Red=Cloning site Blue=ORF Green=Tags(s)

TTTTGTAATACGACTCACTATAGGGCGGCCGGGAATTCGTCGACTGGATCCGGTACCGAGGAGATCTGCC
 GCC**CGGATCGCC**

ATGTCCTTACAGTGTGACTCTGACTGGGCCTGGGCCTGGGGCTCCGCTGCAGGGAGGCAAGGACTTCA
 ATATGCCCTCACTATCTCCCGATCACCCAGGCAGCAAGGCGGCCAGTCCCAGCTCAGTCAAGGAGA
 TCTTGTGGTGGCCATTGATGGAGTCAACACAGACACCATGACCCACCTGGAGGCCAGAACAAGATCAAG
 TCGGCCAGCTACAACCTGAGCCTCACTCTGCAGAAGTCCAAGCGTCTATCCCCATCTCCACGACAGCAC
 CCCCTATCCAGTCCCATTGCCAGTGATCCCCACAAAAGGACCCTTCTCTGGACACGAACAGCAGCCT
 GCGGACTCCCAGCCCAGCCTGAGGCGAGGGCCAGCCAGGCACCTCAGGCACCCTGGAGTTCGGGGAC
 ACCTTTAGCTCTCCTTCTCCAGACCTCTGTCTGCACCTCACACATGGAGGCCTCGGGGCTGTCTTC
 CTCTGGGACGCCAGTGGCCAAGGCCAGCTCAGAGGGTACCCAGGGCTCAGTCAGCCCCAAAGTTCTGCC
 AGGCCCCAGCCAACCAAGGCTATAAACAACCCATTGGCCTGTACTCAGCAGAGACCCTGAGGGAGATG
 GCTCAGATGTATCAGATGAGCCTCCGAGGGAAGGCCTCAGGTGCTGGACTCCTAGGAGGGAGCCTCCCTG
 TGAAGACCTGGCGGTGGACAGCGCCTCTCCCGTGTACCAGGCTGTGATCAAACCCAAAGCAAGCCAGA
 AGATGAGGCTGATGAGTGGGCCCAGCGCTCTCCAACCTGCAGTCTCGTTCCTCCGAATCTTGGCCAG
 ATGACCGGGACAGAATACATGCAAGACCCTGATGAGGAAGCTCTGCGAAGGTCAAGCACCCCTATTGAGC
 ATGCTCCAGTGTGCACAAGCCAGGCCACTTCCCGCTGCTGCCTGCTTCTGCCCGTGCCTGCTGCTGC
 CTCTCCATTGCGGCCTCGCAACCCCTGGCCACAGCTGCTGCCGCCATGCTGTTGCTGCCTCCGCTGCA
 GGCCCTGCCTCAAGCCCCGTGGAGAATCCGAGGCCACAGGCTTCTGCTTACAGCCCTGCAGCAGCCACTT
 CTCCAGCACCTGCTGCCATACCAGCTACAGTGAAGTCCAGCTGCCCTGCACCCAAGCCTCGGTTGT
 AACCACTGCCAGCATCCGCGCTTCGGTCTACCAGCCAGTGCCTGCATCTCCCTACAGCCCATCTCCAGGA
 GCCAATTATAGTCCGACTCCCTATACTCCTTACCAGCTCCTGCTTACACCCCTCACCTGCTCCCACT
 ATACCCCTCACCTGCACCCACCTACTCCCTCTCCTGCACCAGCTTATACCCATCACCTGCCCAAA
 CTATAACCCTACACCATCAGCTGCCTACAGTGGGGGCCCTTCAAGTCTGCCAGCCGCCACCCTGGGTG
 ACCGACGACAGCTTCTCTCAGAAGTTTGTCCCGAAAGAGCACCCCTCTGTCAGCAAGCAGACCCTGC
 CCAGGGGGCTCCAGCCTACAACCCAACAGGCCACAAGTGACTCCTTGGCAGGGGCACCTCCAGAG
 AGCTGAGCGCTTCCAGCAAGCAGCCGGACTCCCCTCTGTGGGCACTGTAACAATGTCATCAGGGGTCT
 TTTCTGGTAGCCATGGGCGCTCTTGGCACCCAGAAGAGTTCAATTGTGCCTACTGCAAGACCTCCCTAG
 CAGACGTGTGCTTGTGGAGGAGCAGAACAATGTTTACTGTGAGCGGTGTTACGAGCAGTTTTTTGCCCC
 GATCTGTGCCAAGTGTAAACCAAGATCATGGGGAAAGTATGCACGCGCTGCGACAGACCTGGCATAAC
 ACCTGCTTCATCTGCGCCGCTGTAAAGAAGCCTTTTGGGAACAGCCTCTTCCACATGGAGGATGGAGAGC
 CATACTGTGAGAAAGACTACATCAACCTGTTTACGACGAAGTGTGATGGATGTGATTTCCCTGTGGAAGC
 TGGTGACAAGTTTATCGAGGCATTGGGGCACACCTGGCACGACACCTGCTTCATTTGTGCGGTCTGCCAC
 GTGAATCTGGAGGGGCAGCCATTCTACTCCAAGAAAGACAACCGCTGTGCAAGAAGCACGCGCATGCCA
 TCAACGTG

ACGCGTACGCGGCCGCTCGAGCAGAACTCATCTCAGAAGAGGATCTGGCAGCAAATGATATCCTGGATT
 ACAAGGATGACGACGATAAGGTTTAA

Protein Sequence: >RR217144 representing NM_001277165
Red=Cloning site Green=Tags(s)

```

MSYSVTLTGPWPWFRLQGGKDFNMPLTISRITPGSKAAQSQLSQGDLVVAIDGVNTDTMTHLEAQNKIK
SASYNLSLTLQSKRPIPISTTAPPIQSPLPVIPHQKDPSLDTNSSLATPSPSPEARASPGTSGTLEFGD
TFSSFSQTSVCTSHMEASGPVLPPLGSPVAKASSEGTQGSVSPKVLPGSQPRLYNNPIGLYSAETLREM
AQMYQMSLRGKASGAGLLGGSLPVKDLAVDSASPVYQAVIKTQSKPEDEADEWARRSSNLQSRFRILAQ
MTGTEYMQDPDEEALRRSSTPIEHAPVCTSQATSPLLPASAPSPAAASPIAASPTLATAAAAHAVAASAA
GPASSPVENPRPQASAYSPPAAATSPAPAAHTSYSEGPAAPAPKPRVTTASIRPSVYQVPASPSPSPG
ANYSPTPYTPSPAPAYTPSPAPTYTPSPAPTYSPSPAPAYTPSPAPNYNPTPSAAYSGGPSESASRPPWV
TDDFSQKFAPGKSTTSVSKQTLPRGAPAYNPTGPQVTLARGTFQRAERFPASSRTPLCGHCNNVIRGP
FLVAMGRSWHPEEFNCAYCKTSLADVCFVEEQNNVYCERCYEQFFAPICAKCNTKIMGEVMHALRQTWHT
TCFICAACKKPFNSLFHMEDGEPYCEKDYINLFSTKCHGCDFPVEAGDKFIEALGHTWHDTCFICAVCH
VNLEGQPFYSKKDKPLCKKHAHAINV
    
```

TRTRPLEQKLISEEDLAANDILDYKDDDDKV

Restriction Sites:

Sgfl-MluI

Cloning Scheme:

Cloning sites used for ORF Shuttling:



* The last codon before the Stop codon of the ORF

ACCN: NM_001277165

ORF Size: 2178 bp

OTI Disclaimer: The molecular sequence of this clone aligns with the gene accession number as a point of reference only. However, individual transcript sequences of the same gene can differ through naturally occurring variations (e.g. polymorphisms), each with its own valid existence. This clone is substantially in agreement with the reference, but a complete review of all prevailing variants is recommended prior to use. [More info](#)

OTI Annotation: This clone was engineered to express the complete ORF with an expression tag. Expression varies depending on the nature of the gene.

Components: The ORF clone is ion-exchange column purified and shipped in a 2D barcoded Matrix tube containing 10ug of transfection-ready, dried plasmid DNA (reconstitute with 100 ul of water).

Reconstitution Method:

1. Centrifuge at 5,000xg for 5min.
2. Carefully open the tube and add 100ul of sterile water to dissolve the DNA.
3. Close the tube and incubate for 10 minutes at room temperature.
4. Briefly vortex the tube and then do a quick spin (less than 5000xg) to concentrate the liquid at the bottom.
5. Store the suspended plasmid at -20°C. The DNA is stable for at least one year from date of shipping when stored at -20°C.

RefSeq: [NM_001277165.1](#), [NP_001264094.1](#)

RefSeq Size: 4847 bp

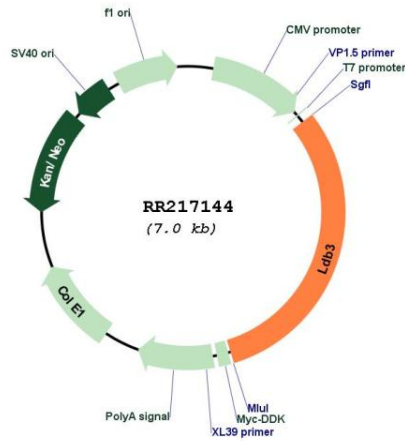
RefSeq ORF: 2181 bp

Locus ID: 498587

Cytogenetics: 16p15

MW: 76.8 kDa

Product images:



Circular map for RR217144