

Product datasheet for **RR217135**

Kel (NM_001191611) Rat Tagged ORF Clone

Product data:

Product Type:	Expression Plasmids
Product Name:	Kel (NM_001191611) Rat Tagged ORF Clone
Tag:	Myc-DDK
Symbol:	Kel
Synonyms:	RGD1565470
Mammalian Cell Selection:	Neomycin
Vector:	pCMV6-Entry (PS100001)
E. coli Selection:	Kanamycin (25 ug/mL)



[View online »](#)

ORF Nucleotide Sequence:

>RR217135 representing NM_001191611
 Red=Cloning site Blue=ORF Green=Tags(s)

TTTTGTAATACGACTCACTATAGGGCGGCCGGAATTCGTCGACTGGATCCGGTACCGAGGAGATCTGCC
 GCC**CGCATCGCC**

ATGGGACCTCCCTGGAGCCAGGAGAGATCTCCAGAAGAGAGTCTTCCACTGAATGGAGCAGACAGTCTCGA
 CAAGAGCCAGATGGGTGCTGCTAGCTGTCTGCTTTGTGGCCTGCTCATTGGTTGTTCTATGCTTTGGGT
 TTACATTTTCCGGAAGTGTGGTCTTGGACCTGTGAGTACCTGTGTGTATGGAGCTCGTGAACCATTAC
 CTGGCTTCTGGAAACAGAAGTGCAGCCCTGTACTGACTTTTTTCAGCTTTGCTTGTGAAAAAGCCAATG
 GGACCAGTAACTTTCCAGGCACTTGCAGAAGAGAACAAGAGCCGACTGTGAAACTATTGGAGGCCCC
 AGGGTCTGGCATCTAGAATCTGGAGAGGAGAAAGCCTTCCAATTTATAACTCTGCATGGACACAGAT
 GCCATTGAAGCTTCAGGGACTGGTCCACTGTACAAATTTATAAGAGCTTGGAGGCTGGAATATTTCTG
 GCAATTGGACTTTTTTACTTCAATCAAATCTGAGGCTTCTGATGAGTCAAGTATGGCCACTTCCCATT
 CTTCCGAGCCTATCTTCATCCTCATCCAGCCCTCCACATACGCCAATCATCCAGATAGACCAGCCGGAG
 TTTGACATTTCTTCCAGCAAGATCAGGAACAGAAAGTCTATGCTCAGATCCTACGGGAATATGTGACAT
 ACCTGAACCGGTTGGGAACCTTACTTGGGAGTAACCCACAGGAAGCACAACAACATGCCTCCTGGTCCAT
 CGTCTTTACCTCACGGCTGTTCCAGTTTCTGAGGCCACAACAACAGCAGCAGGCACAAGACAAGCTCTTT
 CACGTGGTACTATTGATGCCCTTCAGGAAATGGCCCCAGCCATCGACTGGTTATCCTGTTTACAAGCAA
 TATTCACACCGATGTCTTTGAGTCCCTCCAGACCCTCCAAGTCCATGACCTAGACTACTTGAGAAACAT
 GTCACAGCTGGTAGAAGAAGGGCTGTGAATCACAGTGAATAACAGAGCTACATGATCCTTGGGTTG
 GTGGATAACCCTTTCACCAGCACTGGCCACTAAATTCAGGAGGCACGCAGAGAAGTACTCAGAAACTAC
 GAAACTGAAAGAACGACCACCCTGCCAGCCTACCCTCGTGGATGAAGTGTGTGGAACAGACGGGATC
 CTTCTTTGAGCCTACTCTGGCAGCTCTGTTTGTTCATGAAGCCTTTGGTCCAAGCATTGGAAGTCTGCC
 ATGGAATTATTTGCTGAGATAAAGGATGCTGTATCGTACGCCTCAAGAAGCTTTCCTGGATAAGTGAGG
 AGACTCGGAAAGAGGCCTTGAACAAGCTCACCAACTGCAGGTGGAGATGGGGGCTCCAAAACGGGCCCT
 GAAGACTGAGATGGCCAAACAAGAATATAGTGATATACAACTGGTCCCAGTTTCCCTCAATCTTTCCTA
 AGCTGTGTACGATCCCTCCAGGGCAGAAAGGTTCCGGAGTTTCTTGCAGCCTTTCCCTACCACAGATGGC
 AGAAATCTCCCTGGAGCGTCAGTGCCTACTATTAGTACCTGACCATGTGGTGGTCTTCCCTGCTGGCCT
 TCTCCAACCTCCATTCTCCACCCTGGTACCCCAGAGCCGTGAACCTTGGCGCTGTTGGCAGCATCATG
 GCCATAAACTGTTGCATATCTTCTTCCAATTCTACTTCTGGGGGCTGCCAGCCTGCGACACACGTTG
 CACTACAAGAAGCACTTCTATGCCTGGAGCATCGCTATGCTGCCTTCCCCTTACCAGCATGTCCTCTTT
 CAATGGTTCTCACACTCCTGGAAAATGCTGCAGACATAGGAGGCGTAGCCATTGCATTTACAGGCATAT
 AGAAAGAGGATAACAGAGCGCACTGGAGAGTTGACTCTGCCAACAGGAGCTCAGCCCCATCAACTCT
 TCTTCCGAAGCTACGCCAGGTAATGTGTAGGGAGCTGATCTCACAAGACCCTCAGGACACTCACAGTCC
 TCCAAGGCTTCGAGTCCATGGGCCCTCAGCAATTTCTCCAGATTTTGCCAAACATTTTCTTTGTCCAAGT
 GGTTCCTTCTGAATCCCTCTACCCGCTGCAAGCTCTGG

ACGCGTACGCGGCCGCTCGAGCAGAACTCATCTCAGAAGAGGATCTGGCAGCAAATGATATCCTGGATT
 ACAAGGATGACGACGATAAGGTTTAA

Protein Sequence: >RR217135 representing NM_001191611
 Red=Cloning site Green=Tags(s)

MGPPWSQERSPEESLSTEWSRQSTRARWVLLAVLLCGLLIGCSMLWVYIFRNCGPWTCESPVCMELVNH
 LASGNRSAAPCTDFFSFACEKANGTSNSFQALAEENKSRLWKLLEAPGSWHLESGEEKAFQFYNSCMDTD
 AIEASGTGPLVQIIKELGGWNI SGNWTFDFNFQNLRLMSQYGHFPFFRAYLHHPHPAPPHTPIIQIDQPE
 FDILLQQDQEQKVYAQILREYVTYLNRLGTLGSNPQEAQQHASWSIVFTSRLFQFLRPQQQQQAQDKLF
 HVVTIDALQEMAPAIWLSCLQAIFTPMSLSPSQTQVHDLDYLRNMSQLVEEGLLNHSEIIQSYMILGL
 VDTLSPALATKFQEARRELTQKLRKLERPPLPAYPRWMKCEVQTGSFFFEPTLAALFVHEAFGPSIRSAA
 MELFAEIKDAVIVRLKKLSWISSEETRKEALNKLTLQVEMGAPKRALKTEMAKQEYSDIQLGPSFLQSFL
 SCVRSLLQGRKVRSLQPPFPYHRWQKSPWSVSAYYSVPDHVVVFPAGLLQPPFFHGPYPRAVNFGAVGSM
 AHKLLHIFFFQLLPGGCPACDTRALQEALLCLEHRYAAFPLPSMSSFNGSHTLLENAADIGGVAIAFQAY
 RKRITERTGELTLPNQELSPYQLFFRSYAQVMCRELISQDPQDTHSPRLRVHGPLSNPDPFAKHFLCPS
 GSLLNPSTRCKLW

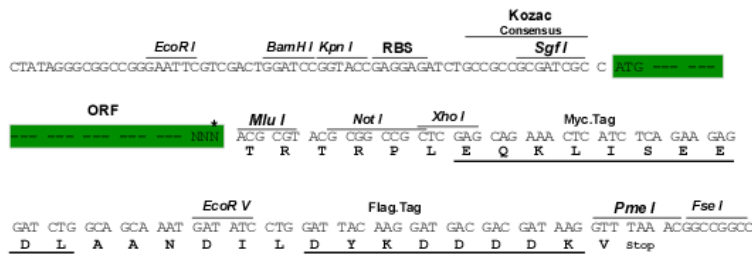
TRTRPLEQKLI SEEDLAANDILDYKDDDDKV

Restriction Sites:

SgfI-MluI

Cloning Scheme:

Cloning sites used for ORF Shuttling:



* The last codon before the Stop codon of the ORF

ACCN: NM_001191611

ORF Size: 2139 bp

OTI Disclaimer: The molecular sequence of this clone aligns with the gene accession number as a point of reference only. However, individual transcript sequences of the same gene can differ through naturally occurring variations (e.g. polymorphisms), each with its own valid existence. This clone is substantially in agreement with the reference, but a complete review of all prevailing variants is recommended prior to use. [More info](#)

OTI Annotation: This clone was engineered to express the complete ORF with an expression tag. Expression varies depending on the nature of the gene.

Components: The ORF clone is ion-exchange column purified and shipped in a 2D barcoded Matrix tube containing 10ug of transfection-ready, dried plasmid DNA (reconstitute with 100 ul of water).

- Reconstitution Method:**
1. Centrifuge at 5,000xg for 5min.
 2. Carefully open the tube and add 100ul of sterile water to dissolve the DNA.
 3. Close the tube and incubate for 10 minutes at room temperature.
 4. Briefly vortex the tube and then do a quick spin (less than 5000xg) to concentrate the liquid at the bottom.
 5. Store the suspended plasmid at -20°C. The DNA is stable for at least one year from date of shipping when stored at -20°C.

RefSeq: [NM_001191611.1](#), [NP_001178540.1](#)

RefSeq Size: 2259 bp

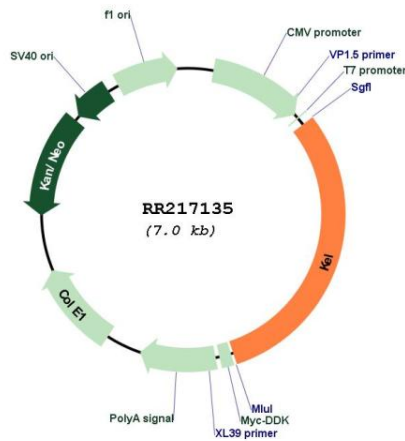
RefSeq ORF: 2142 bp

Locus ID: 297025

Cytogenetics: 4q23

MW: 81 kDa

Product images:



Circular map for RR217135