

## Product datasheet for **RR217102**

### **Tgfb1 (NM\_053802) Rat Tagged ORF Clone**

#### **Product data:**

Product Type:	Expression Plasmids
Product Name:	Tgfb1 (NM_053802) Rat Tagged ORF Clone
Tag:	Myc-DDK
Symbol:	Tgfb1
Synonyms:	Big-h3; BIGH3
Mammalian Cell Selection:	Neomycin
Vector:	pCMV6-Entry (PS100001)
E. coli Selection:	Kanamycin (25 ug/mL)



[View online »](#)

**ORF Nucleotide Sequence:**

>RR217102 representing NM\_053802  
 Red=Cloning site Blue=ORF Green=Tags(s)

TTTTGTAATACGACTCACTATAGGGCGGCCGGGAATTCGTCGACTGGATCCGGTACCGAGGAGATCTGCC  
 GCC**GCGATCGCC**

ATGGCGCTCCTCGTGC GGCTGCTGCCCTCGCTCTGGCTCTGTCTCTGGGCTTCACCGGGACCCTGGCGG  
 GCCCGGCCAAGTACCCTATCAGCTGGTCTGCAGCACAGCCGGCTCCGGGGCCGCCAGCACGGCCCCAA  
 TGTATGTGCTGTGCAGAAGGTCATTGGCACTAACAAAGAAATACTTCACCAACTGCAAGCAGTGGTACCAG  
 AGGAAGATCTGCGGCAAGTCGACAGTCATCAGCTATGAGTGTGCCCGGATATGAAAAGGTCCCAGGAG  
 AGAAAGGTGCCCTGCAGCTCTCCGCTCTCCAATCTGTACGAGACCTTGGGAATTGTGGGATCGACCAC  
 CACACAGCTGTACACAGATCGCACAGAAAAGCTGAGGCCCTGAGATGGAGGGACCCGGCAGCTTCACCATC  
 TTTGCCCTAGCAACGAGGCCTGGTCTCTTGCCTGCGGAAGTGTGGACTCCCTGGTGTAGCAATGTCA  
 ACATTGAACTGTCAACGCCCTCCGCTACCACATGGTGGACAGACGGGTCTGACAGACGAGCTTAAGCA  
 CGGCATGGCTCTCACCTCATGTACCAGAACTCCAACATCCAGATCCATCACTATCCCAATGGGATTGTA  
 ACTGTAACTGTGCCCGGCTGTGAAAGCTGACCACCATGCGACCAACGGCGTGGTGCATCTCATTGATA  
 AGGTCAATTTCCACCGTTACCAACAACATCCAGCAGATCATCGAGATTGAGGACACCTTTGAGACACTTCG  
 GGCCCGCTGGCTGCATCAGGACTCAATACCGTGTGGAGGGTGACGGCCAGTTCACACTCTTGGCCCCA  
 ACCAACGAGGCCTTTGAGAAGATTCTGTGAGACCTTGAACCGGATCCTGGGTGACCCCGAGGCCTGA  
 GAGACCTGCTAAACAATCATATCCTGAAGACAGCCATGTGTGCTGAGGCCATTGTGGTGGAAATGGCCAT  
 GGAGACCTGGGGGGCACCACACTGGAGGTGGGCTGCAGTGGAGACATGCTCACTATTAACGGGAAGGCT  
 GTCATCTCCAACAAGACATCCTGGCCACCAACGGTGTATCCACTTCATTGATGAGCTGCTCATCCCAG  
 ATTCAGCCAAGACATTGCTCGAGCTCGCTTCGGAATCTGACGCTCCACAGCCATTGACCTCCTCAGACA  
 AGCTGGCCTCAGCACGCATCTCTGAAAAGAACAGTTGACCTTCTGGCCCTCTGAATTCGTGTTC  
 AAAGATGGTGTCCCCGATTGACGGCCAAATGAAGACTTTGCTTCTGAACCACATGGTCAAAGGGCAGT  
 TGGCTCCAAATATTTGTAATCCGGACAGACACTGGACACACTGGGTGGCAAAAAGCTTCGAGTTTTTGT  
 TTATCGAAATAGCCTCTGCATTGAAAACAGCTGCATTGCCGCCATGACAAGAAGGGACGGTATGGGACC  
 CTGTTCCCATGGACCGGATGCTGACACCCCTATGGGGACTGTTATGGATGTCTGAAGGGGGACAACC  
 GTTTTAGCATGCTGGTGGCCGCATCCAGTCTGCAGGCCCTGATGGAGACCCTCAACCGGGAAGGGGTCTA  
 CACTGTTTTCGCTCCCACGAACGAAGCGTTCGAAGCCATGCCTCCAGAAGAGCTGAACAACTCTTGCCA  
 AATGCCAAGGAACCTACCAACATCCTGAAGTACCACATTTGGGATGAGATCCTGGTTAGCGGAGGCATTG  
 GGGCTCTGGTGGCGCTGAAGTCTCTCAAGGGGACAACTGGAAGTCAGCTCGAAAAACAATGTGGTGTAG  
 TGCAATAAGGAACCTGTTGCCGAAACCGACATCATGGCCACAAACGGTGTGGTGTATGCCATCAACACT  
 GTTCTGCAACCGCCAGCAACCGGCCACAAGAACGGGGAGAAGAGTTGGCAGACTCTGCCCTTGAATCT  
 TCAAGAAGGCGTCAGCCTATCCAGGAGTGCCAGAGTTCTATGCGACTTGCCCTGTCTATCAGCGGT  
 ACTAGAGAGGATGAAGCGGAGAGGA

**ACGCGT**ACGCGGGCGCTCGAGCAGAACTCATCTCAGAAGAGGATCTGGCAGCAATGATATCCTGGATT  
 ACAAGGATGACGACGATAAGGTTTAA

**Protein Sequence:** >RR217102 representing NM\_053802  
Red=Cloning site Green=Tags(s)

MALLVRLPLALALSLGFTGLAGPAKSPYQLVLQHSRLRGRQHGPNVCAVQKVIQGNKKYFTNCKQWYQ  
 RKICGKSTVISYECCPGYEKVPGEKGCPAALPLSNLYETLGIVGSTTTQLYTDRETEKLRPEMEGPGSFTI  
 FAPSNEAWSSLP AEVLDSLVSNNVNIELLNALRYHMVDRRLTDELKHMALTSMYQNSNIQIHHYPNGIV  
 TVNCARLLKADHHATNGVVHLIDKVIQIIEIEDTFETLRAAVAASGLNTVLEGDGQFTLLAP  
 TNEAFEKIPAETLNRI LGDPEALRDLLNNHILKTAMCAEAI VAGMAMETLGGTTLEVGCSGDMLTINGKA  
 VISNKDILATNGVIHFIDELLIPDSAKTLELASESDVSTAI DLLRQAGLSTHL SGKEQLTFLAPLNSVF  
 KDGVPRI DGMKTL LNHMVKGQLASKYLYSGQTLDTLGGKLRV FVYRNSLCIENSCIAAHDKKGRYGT  
 LFTMDRMLTPPMGTVM DVLKGNRFSMLVAIQSAGLMETLNREGVYTVFAPTNEAFQAMPPEELNKLLA  
 NAKELTNILKYHIGDEILVSGGIGALVRLKSLQGDKLEVSSKNNVSVNKEPVAETDIMATNGVVYIAINT  
 VLQPPANRPQERGEELADSALEIFKKASAYSRSQAQSSMRLAPVYQRLLERMKRRG

TRTRPLEQKLISEEDLAANDILDYKDDDDKV

**Restriction Sites:**

SgfI-MluI

**Cloning Scheme:**



**ACCN:** NM\_053802

**ORF Size:** 2055 bp

**OTI Disclaimer:** The molecular sequence of this clone aligns with the gene accession number as a point of reference only. However, individual transcript sequences of the same gene can differ through naturally occurring variations (e.g. polymorphisms), each with its own valid existence. This clone is substantially in agreement with the reference, but a complete review of all prevailing variants is recommended prior to use. [More info](#)

**OTI Annotation:** This clone was engineered to express the complete ORF with an expression tag. Expression varies depending on the nature of the gene.

**Components:** The ORF clone is ion-exchange column purified and shipped in a 2D barcoded Matrix tube containing 10ug of transfection-ready, dried plasmid DNA (reconstitute with 100 ul of water).

**Reconstitution Method:**

1. Centrifuge at 5,000xg for 5min.
2. Carefully open the tube and add 100ul of sterile water to dissolve the DNA.
3. Close the tube and incubate for 10 minutes at room temperature.
4. Briefly vortex the tube and then do a quick spin (less than 5000xg) to concentrate the liquid at the bottom.
5. Store the suspended plasmid at -20°C. The DNA is stable for at least one year from date of shipping when stored at -20°C.

**RefSeq:** [NM\\_053802.1](#), [NP\\_446254.1](#)

**RefSeq Size:** 2696 bp

**RefSeq ORF:** 2058 bp

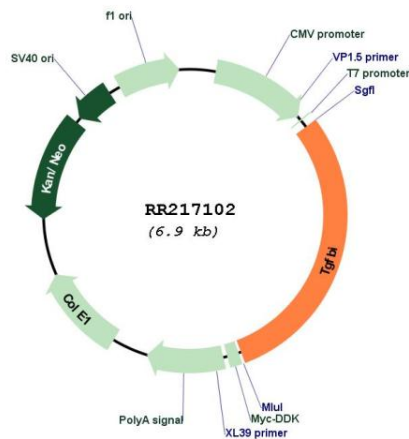
**Locus ID:** 116487

**Cytogenetics:** 17p14

**MW:** 74.8 kDa

**Gene Summary:** mouse homolog is an extracellular matrix protein; human homolog is associated with hereditary corneal dystrophies [RGD, Feb 2006]

### Product images:



Circular map for RR217102