

## Product datasheet for **RR217071**

### **Lrrc32 (NM\_001170434) Rat Tagged ORF Clone**

#### **Product data:**

Product Type:	Expression Plasmids
Product Name:	Lrrc32 (NM_001170434) Rat Tagged ORF Clone
Tag:	Myc-DDK
Symbol:	Lrrc32
Synonyms:	Garp
Mammalian Cell Selection:	Neomycin
Vector:	pCMV6-Entry (PS100001)
E. coli Selection:	Kanamycin (25 ug/mL)



[View online »](#)

ORF Nucleotide  
Sequence:

>RR217071 representing NM\_001170434  
 Red=Cloning site Blue=ORF Green=Tags(s)

TTTTGTAATACGACTCACTATAGGGCGGCCGGGAATTCGTCGACTGGATCCGGTACCGAGGAGATCTGCC  
 GCCGCGATCGCC

ATGAGCTACCAGATCCTGATACTCTGGCCATGCTGACCCTGGCCTGGCTATCTCTCAGCGCCGAGACC  
 AAGTGCCCTGTAGGACGGTGAACAAGGAGGCCTTGTGCCACGGCCTCAGCCTGCTTCAGGTCCCCTCGGT  
 GCTCTCATTGGACATCCAAGCTCTCTACTTGTCCGGGAACCGGCTGCAGAGCATCCTGGTCTCCCGTTG  
 AGCTTCTATACAGCACTTCGCCACCTGGATTTAAGTGACAACGAGATTAGCTTCTCCAGCCGGGGTCT  
 TCCAGGCCCTGCCCTACCTGGAGCACCTCAACCTGGCCACAACCGGCTTCCCGCGGGCATGGCATTGAA  
 CAGTGGTGGTCTGGGCCCTTGCCCTTGTGGTCTCCCTGGACCTGTCTGGGAACAGCCTGCATGGCAGT  
 CTGGTGGAGCGGCTGTTGGGTGAGGCTCCGAGGCTGCGCACGCTCTCCCTGGCAGAGAACAGCCTCACTC  
 GCCTGGCAGCCACACCTTCTGGGGTATGCCAGCCATGGAGCAACTGGACCTTACAGCAACGTCTCTGAT  
 GGACATTGAGGATGGTGCCTTTGAGGCCCTGCCCAGCTGACTCACCTCAATCTCTCCCGCAACTCCCTC  
 ACGTGCATCTCGGACTTACGCTCCAGCAGCTGCAGGTAATGACCTGAGCTGCAACAGCATTGAGACCT  
 TCCAGACGGCCCCAGAATCACAGGCCAGTTCAGCTGGCCTGGCTTGACCTACGGGAGAACAAGCTGCT  
 CCACTTCCCTGACCTGGCCATGTTCCCCAGACTCATCTACCTGAATGTGTCTAACAACTCATCCAGCTC  
 CCTACAGGGCTGCCCCAGGACAGCGAGGACCTCCATGCACCGTCGGAAGGCTGGTCAGCCTCTCTACTGT  
 CCAACCCAGTCGGAATGCCAGCATCCACCCCTCTCCAGCTCCTAACTGGACCTGAGTTACAATGA  
 GATTGAATTGGTCCCTGCTGGCTTTCTTGAGCATCTGACCTCCCTGCGCTTCTCAACCTCAGCAGAAAC  
 TGTCTTCGATCCTTTGAGGCTCGGCGAGCGGGCTCCCTGCCCTGCCTGGTACTTCTGGACTTGAGCCACA  
 ATGTGCTGGAAGCGTTAGAAGTGGTACCAAAGTCCCTGGGGTCCCTGAAGACATTGCTTCTGCAGGACAA  
 CACCTTGCAGAGAACTCCACCCTACACCTTTGCTGGCCTGGCCAGCCTGCAGAGGCTCAACCTACAGGGA  
 AACCGAGTCAGCCCTGTGGGGACAAGCAGAGCCAGGTCACCCAGGCTGTGTGGACTTCTCTGGGATCC  
 CCACCCTCCATTTCTTAACATGGCGGGAACTCGATGGAACACTCAGGGCAGGACAGCTTCTCCACAC  
 CCCACTTACTGAGCTGGACCTCTCTGCCAATCCTGGTCTGGATGTGGCCACGGGAGCCTTGGTGGCCTG  
 GAGGCATCCTGGAGGTCTGGAGCTTCAAGGCAACGGGCTGGTGGTACTGAGAGTAGACTTGCCTGCT  
 TCCGTCGCTCAAGCGCCTAACCTTGTGAGAACCGCTAAGCCACTGCCTGCTTGGACACGGGCTGT  
 GTCCTGGAGGTCTGGATCTGCGGAACAACAGCTTCAGCCTCTTCCCGGCAATGCCATGGTGGCCTG  
 GAGACCAGTCTCCGGCGGCTGACTTGCAGGAAATCCACTCAGCTGCTGCGGCAATGGCTGGCTGGCGG  
 CCCAGTTGACACAGGGCCGAGTGGATGTGGACGCCACTCAGGACCTCATCTGCCGCTTCGGCTCCCAGGA  
 GGAGGTGTCCCTGAGCCTAGTGCCTCCAGAGGACTGTGAGAAGGGGGGGCTGAAGAATGTCAACCTCATC  
 ATCATCTTAGCTTACACTGGTCTCCGCCATAGTCTTACCACGCTGGCCACCTGCTGTTCTCCGCA  
 GGCAGAAGCTCAGCCAACAGTACAAAGCC

ACGCGTACGCGGCCGCTCGAGCAGAACTCATCTCAGAAGAGGATCTGGCAGCAATGATATCCTGGATT  
 ACAAGGATGACGACGATAAGGTTTAA

Protein Sequence: >RR217071 representing NM\_001170434  
 Red=Cloning site Green=Tags(s)

MSYQILILLAMLTLGLAISQRDQVPCRTVNKEALCHGLSLLQVPSVLSLDIQALYLSGNRLQSILVSP  
 SFYALRHLSDNEISFLQPGVFQALPYLEHLNLAHNRLAAGMALNSGGLGRLPLVVSLLDLSGNSLHGS  
 LVERLLGEAPRLRTLSLAENSLTRLARHTFWGMPAMEQLDLHSNVLMDIEDGAFAEPQLTHLNLNRSL  
 TCISDFSLQQLQVLDLSCNSIETFQTAPESQAQFQLAWLDLRENKLLHFPDLAMFPRLIYLNVSNNLIQL  
 PTGLPQDSEDLHAPSEGWSASLLSNPSRNASIHPLSQLNLDLSYNEIELVPAGFLEHLTSLRFLNLSRN  
 CLRSEARRAGSLPCLVLLDLSHNVLEALELGTKVLGSLKTLQLDNTLRELPPYTFAGLASLQRLNLQG  
 NQVSPCGQAEPGPPGCVDFSGIPTLHFLNMAGNSMETLRAGSFLHTPLTELDLSANPGLDVATGALVGL  
 EASLEVLELQGNLVVLRVDLPCFRRLKRLNLAENRSLHLPWTRAVSLEVLDLRNNSFLLPGNAMGGL  
 ETSRLRYLQGNPLSCCGNGWLAQLHQGRVDVATQDLICRFGSQEEVSLSLVRPEDCEKGLKNVNI  
 IILSFTLVSAIVLTTLATCCFLRRQKLSQQYKA

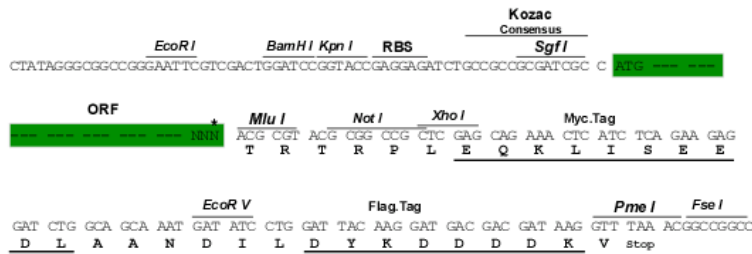
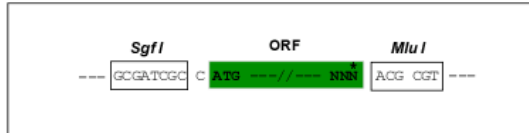
TRTRPLEQKLISEEDLAANDILDYKDDDDKV

Chromatograms: [https://cdn.origene.com/chromatograms/ja3335\\_a01.zip](https://cdn.origene.com/chromatograms/ja3335_a01.zip)

Restriction Sites: Sgfl-MluI

Cloning Scheme:

Cloning sites used for ORF Shuttling:



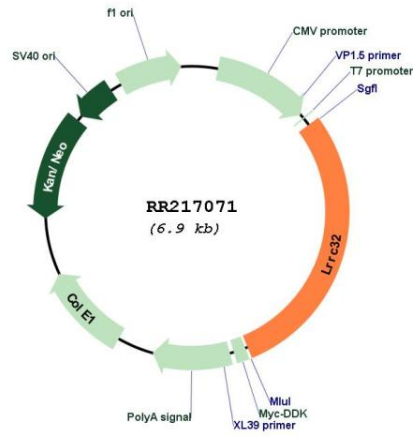
\* The last codon before the Stop codon of the ORF

ACCN: NM\_001170434

ORF Size: 1989 bp

<b>OTI Disclaimer:</b>	<p>Due to the inherent nature of this plasmid, standard methods to replicate additional amounts of DNA in E. coli are highly likely to result in mutations and/or rearrangements. Therefore, OriGene does not guarantee the capability to replicate this plasmid DNA. Additional amounts of DNA can be purchased from OriGene with batch-specific, full-sequence verification at a reduced cost. Please contact our customer care team at <a href="mailto:custsupport@origene.com">custsupport@origene.com</a> or by calling 301.340.3188 option 3 for pricing and delivery.</p> <p>The molecular sequence of this clone aligns with the gene accession number as a point of reference only. However, individual transcript sequences of the same gene can differ through naturally occurring variations (e.g. polymorphisms), each with its own valid existence. This clone is substantially in agreement with the reference, but a complete review of all prevailing variants is recommended prior to use. <a href="#">More info</a></p>
<b>OTI Annotation:</b>	This clone was engineered to express the complete ORF with an expression tag. Expression varies depending on the nature of the gene.
<b>Components:</b>	The ORF clone is ion-exchange column purified and shipped in a 2D barcoded Matrix tube containing 10ug of transfection-ready, dried plasmid DNA (reconstitute with 100 ul of water).
<b>Reconstitution Method:</b>	<ol style="list-style-type: none"> <li>1. Centrifuge at 5,000xg for 5min.</li> <li>2. Carefully open the tube and add 100ul of sterile water to dissolve the DNA.</li> <li>3. Close the tube and incubate for 10 minutes at room temperature.</li> <li>4. Briefly vortex the tube and then do a quick spin (less than 5000xg) to concentrate the liquid at the bottom.</li> <li>5. Store the suspended plasmid at -20°C. The DNA is stable for at least one year from date of shipping when stored at -20°C.</li> </ol>
<b>RefSeq:</b>	<u><a href="#">NM_001170434.1</a></u> , <u><a href="#">NP_001163905.1</a></u>
<b>RefSeq Size:</b>	3953 bp
<b>RefSeq ORF:</b>	1992 bp
<b>Locus ID:</b>	293135
<b>Cytogenetics:</b>	1q32
<b>MW:</b>	72.7 kDa

Product images:



Circular map for RR217071