

## Product datasheet for **RR216997**

### Ahcyl2 (NM\_001173510) Rat Tagged ORF Clone

#### Product data:

Product Type:	Expression Plasmids
Product Name:	Ahcyl2 (NM_001173510) Rat Tagged ORF Clone
Tag:	Myc-DDK
Symbol:	Ahcyl2
Synonyms:	RGD1564895
Mammalian Cell Selection:	Neomycin
Vector:	pCMV6-Entry (PS100001)
E. coli Selection:	Kanamycin (25 ug/mL)



[View online »](#)

**ORF Nucleotide Sequence:**

>RR216997 representing NM\_001173510  
 Red=Cloning site Blue=ORF Green=Tags(s)

TTTTGTAATACGACTCACTATAGGGCGGCCGGAATTCGTCGACTGGATCCGGTACCGAGGAGATCTGCC  
 GCC**CGGATCGCC**

ATGTCGGTGCAGTTGTGTCAGCAGCGGCTGCCGCCAAGGTGCCTGAGGTGGAGCTGAAGGATCTGAGCC  
 CCTCTGAGGCGGAGCCTCAGTTAGGACTGAGCACGGCGACCGTGGGCGCCATGGTACCCCGAGCGGTGG  
 CGGGGACCCAGAGGCTCCAGCTCCAGCTCCCGCGGAGAGCGGCCCGGCCCTGGCCCGGCTCGGGG  
 CCCACCGCGGCTCTCAGCCCTGCGGCAGGGAAGGTCCCTCAAGCGTCGGCCATGAAGCGGAGCGACCCTC  
 ATCACCAGCACCAGCGGCATCGCGACGGCGGAGGCCCTGGTACGCCCCGACGGCACGGTACCCAGGC  
 GCCCGCACGGTCAAGAAGATTCAGTTTGTGACCAGAAGCAGGAATCAACAAACGTCCACCAAAATT  
 GGACGTCGCTCTTTGCTCGTCCATCTCTCAGTCATCTACTGACAGCTACAGCTCAGCTGCCTCATACA  
 CAGATAGCTCTGACGATGAAACATCCCCAGGGACAAGCAGCAAAAGAACTCTAAGGGGAGTAGCGACTT  
 CTGTGTCAAGAACATCAACAAGCAGAGTTTGGACGCAGAGAGATTGAAATTGCTGAGCAAGAGATGCCT  
 GCCTTGATGGCTTAAAGGAAGAGAGCCCAAGGAGAAAAGCCTTTGGCTGGAGCCAAAATCGTGGGTTGTA  
 CGCACATCACTGCTCAGACGGCTGTACTTATGGAGACTCTGGGTGCTCTGGGGGCACAGTGCCGATGGGC  
 TGCTGCAACATCTACTCCACTCTCAATGAAGTGGCTGCTGCTCTCGCAGAAAGTGGGTTTCCCCTCTTT  
 GCCTGGAAGGAGAGTCAAGAAGTACTTTTGGTGGTGCATTGACAGATGCGTGAATGTGGAAGGTTGGC  
 AGCCAAACATGATCTTGGATGATGGAGGAGATCTTACTACTGGATTTATAAAAAGTATCCCAACATGTT  
 TAAGAAAATCAAAGGCATAGTTGAGGAGAGTGTACTGGAGTCCATAGGCTGTACCAACTGTCCAAAGCT  
 GGAAGCTGTGTGTTCCAGCCATGAACGTCAATGACTCAGTCACTAAACAGAAATTTGATAACCTCTACT  
 GTTCCCGTGAATCTATCCTTGACGGACTTAAAAGGACAACAGATATGATGTTTGGTGGAAAGCAAGTGGT  
 GGTCTGTGGCTATGGAGAGGTAGGAAAGGGGTGCTGTGCTGCTCTGAAAGCCATGGGTCCGTCGTGATC  
 GTAAGTGAATGATCCCATCTGTGCCCTGCAAGCCTGTATGGATGGATTTGACTAGTGAAGCTAAATG  
 AAGTATCCGGCAAGTGGACATTGTTATTACTTGTACAGGGAACAAGAAGTGGTAACCAGAGAGCACTT  
 GGACCGTATGAAGAATAGCTGCATCGTTTGAACATGGGACATTCACACTGAGATTGATGTGGCCAGC  
 CTGCGGACCCAGAACTGACCTGGGAGAGAGTAAGATCCCAAGTTGACCATGTGATATGGCTGATGGCA  
 AGAGGATAGTACTGCTGGCAGAGGGCCGCTGCTGAATCTCAGCTGCTCCACAGTGCCTACCTTTGTGCT  
 CTCAATCACCGCTACCACTCAGGCTCTCGCCTTGATAGAATTTACAACGCTCCTGAGGGTGCCTATAAG  
 CAAGATGTGTACCTGCTGCCAAGAAGATGGATGAGTATGTGGCAAGCCTACACCTGCCACCTTTGATG  
 CCCACCTGACAGAGCTGACAGACGAGCAAGCAAGTATCTGGGACTCAACAAGAATGGACCCCTCAAGCC  
 TAATTACTACAGGTAT

**ACGCGT**ACGCGGCCGCTCGAGCAGAACTCATCTCAGAAGAGGATCTGGCAGCAATGATATCCTGGATT  
 ACAAGGATGACGACGATAAGGTTTAA

**Protein Sequence:**

>RR216997 representing NM\_001173510  
 Red=Cloning site Green=Tags(s)

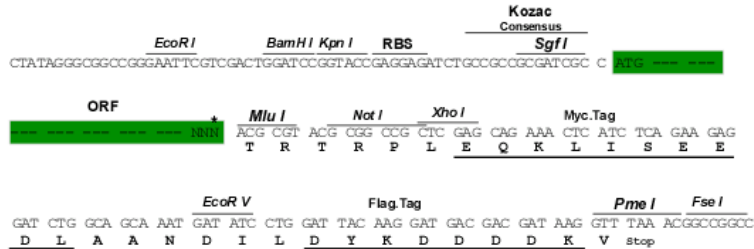
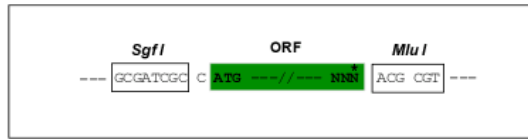
MSVQVVSAAAAAKVPEVELKDLSPSEAEPLGLSTATVGMVPPAGGGDPEAPAPAPAAERPPAPGPGSG  
 PTAALSPAAGKVPQASAMKRSDPHHQHQRHRDGGELVSPDGTVEAPRTVKKIQFADQKQEFNKRPTKI  
 GRRSLRSISQSSTDSYSSAASYTDSDDETS PRDKQQKNSKGSDFCVKNIKQAEFGRRREIEIAEQEMP  
 ALMALRKRAQGEKPLAGAKIVGCTHITAQTAVLMETLGALGAQCRWAACNIYSTLNEVAALAESGFVVF  
 AWKGESEDDFWCIDRCVNVGWPQNMILDDGGDLTHWIYKKYPNMFKKIKGIVEESVTGVHRLYQLSKA  
 GKLCVPAMNVNDSVTKQKFDNL YCCRESILDGLKRTTMMFGGKQVVVCGYGEVKGCCAAALKAMGSVYV  
 VTEIDPICALQACMDGFRLVKLNEVIRQVDIVITCTGNKNVVTREHLDRMKNSCI VCNMGHSNTEIDVAS  
 LRTPEL TWERVSQVDHVIWPDGKRIVLLAEGRLNLSCSTVPTFVLSITATTQALALIELYNAPEGRYK  
 QDQVYLLPKMDEYVAVSLHLPFD AHL TELTDEQAKYLG LNKNGPFKPNYYRY

**TR**TRPLEQKLISEEDLAANDILDYKDDDDKV

Restriction Sites: SgfI-MluI

Cloning Scheme:

Cloning sites used for ORF Shuttling:



\* The last codon before the Stop codon of the ORF

ACCN: NM\_001173510

ORF Size: 1836 bp

OTI Disclaimer: The molecular sequence of this clone aligns with the gene accession number as a point of reference only. However, individual transcript sequences of the same gene can differ through naturally occurring variations (e.g. polymorphisms), each with its own valid existence. This clone is substantially in agreement with the reference, but a complete review of all prevailing variants is recommended prior to use. [More info](#)

OTI Annotation: This clone was engineered to express the complete ORF with an expression tag. Expression varies depending on the nature of the gene.

Components: The ORF clone is ion-exchange column purified and shipped in a 2D barcoded Matrix tube containing 10ug of transfection-ready, dried plasmid DNA (reconstitute with 100 ul of water).

Reconstitution Method:

1. Centrifuge at 5,000xg for 5min.
2. Carefully open the tube and add 100ul of sterile water to dissolve the DNA.
3. Close the tube and incubate for 10 minutes at room temperature.
4. Briefly vortex the tube and then do a quick spin (less than 5000xg) to concentrate the liquid at the bottom.
5. Store the suspended plasmid at -20°C. The DNA is stable for at least one year from date of shipping when stored at -20°C.

RefSeq: [NM\\_001173510.2](#), [NP\\_001166981.2](#)

RefSeq Size: 5040 bp

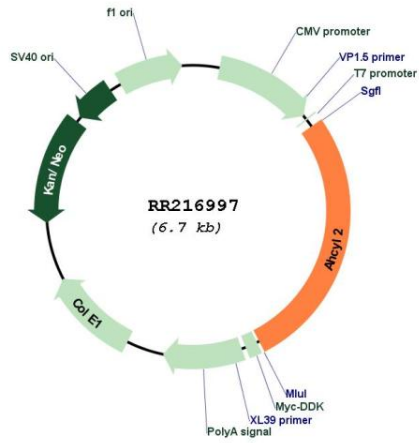
RefSeq ORF: 1839 bp

Locus ID: 312192

Cytogenetics: 4q22

MW: 66.8 kDa

Product images:



Circular map for RR216997