

Product datasheet for **RR216995**

Dact3 (NM_001191947) Rat Tagged ORF Clone

Product data:

Product Type:	Expression Plasmids
Product Name:	Dact3 (NM_001191947) Rat Tagged ORF Clone
Tag:	Myc-DDK
Symbol:	Dact3
Synonyms:	RGD1563892
Mammalian Cell Selection:	Neomycin
Vector:	pCMV6-Entry (PS100001)
E. coli Selection:	Kanamycin (25 ug/mL)



[View online »](#)

ORF Nucleotide Sequence:

>RR216995 representing NM_001191947
 Red=Cloning site Blue=ORF Green=Tags(s)

TTTTGTAATACGACTCACTATAGGGCGGCCGGAATTCGTCGACTGGATCCGGTACCGAGGAGATCTGCC
 GCC**CGGATCGCC**

ATGATCCGGGCTTCTCGTTCCCGGTGAGCCCGAGCGGGTTCGGCTGCGGGGATGGTTGGAAGGCAGCC
 TGGCCGGGCTCTGCGAGTTGCATTGGCTCCGAGAGAGGCAGGAATACCGGTGCAGCAGGCGCTGCGGCT
 GGCCAGCCCGGATGGGGGCGCCGAGCGGAGGACGAGGAGGACGCCGAGGAGACGAGGATGCGGCA
 GCGGCGGTAGGGCCGCGCAGCCCTGGAGGAGCAGCTGGAGGCCCTGCCTGGGCTCATCTGGGACCTGG
 GCCAGCAGCTGGGAGACCTGAGCCTGGAGTCTGGTGGCTGGACCAGGAGAGTGGGCGCAGCTCAGGCTT
 TTATGAAGACCCAGTTCTACCGAGGCCAGATTACCACCCTCCACCTTCTGCGGGGACAGTGGCTTC
 TCCGGATCTGGCTCCTATGGACGCTAGTCCCTCGGACCCAGGGGCATCTATGCCAGCGAGAGACCCA
 AGTCTTAGGCGACGCCAGTCCCAGCTTCCGGAGTCCGTGGGTGCCAGGGTGCAGTGCCTCGATCCTT
 CTCAGCTCCCTATCCGACCGCAGCAGCGGAGCTGAGACCTGCTCGTCCGCGAACGCGGGGCTCGTGCC
 GGGCCCTTCTGACACCTAGCCCGCTGCACGCGGTGGCTCTGCGCAGCCACGGCCAAGTGGACGTGTAC
 CCTGCGGCTCCCCGACGGGGCGGCCAGCCGGCCCTGGACGGCTACATCTCGGGCTCCTGCGCAGGCG
 CCGCCGCGGGGGCGGGCAACCGCGCAGAGTCCCAGGGGCGCAGACGGGGCGCGCGGCCAGAAC
 GGCGCGCGCCCGCGGCCCGCAAGCGTCCCAGCCCCCGGAGGCGCGCACCCGCGCGGGAGCCGTCGA
 CGGAGCGTGCCTGGGTGCGGCGTGGGAGGCGGAGTTCCACCCGAACCCAGCCTCCGGCCCGCGCTC
 GCCGCTCTCCAGTCCGGCGGAGGGTGCCTGGTGAAGGCACAGTACATCTCGGGCGCGCCCGCCCTCT
 AGGGCCCTCCGGGCGCGCCGCGCTCGCCGGCTCCGCCGCTCACGCGAGTGCAGCGTGGAGCAGT
 CCCCGCCACGAGAGCGGCCACGCGCTCGGGCCGCTCGGGCCGCTGGCAGAGCCGTCGGGCGCTCGGG
 ATCGCCGAGGGCGCGCAAGCGGCGCGCTCGCAGTCTGAGACCAGTCTACTGGGCGCGCGCACCCGCT
 CCGCCGCCAAGTACCCACGGCTGAGCGAGACGACCCCGACCGCCCGGCCCGCCGCTGGCCAGCGC
 CCACGCCACGGTCCAGGCTGCGTGGTGGCGATCCACAGTGAATCGACGCGCCGATGTCCGCCG
 TCCCCGAGCCCGTGCCTGCGCGCGCGCGGCCCGCGCCCTACCCTCGCGCCCCCGCTCGGCTGCTG
 TACGGTGCAGGACGACTCCGAGTCTCGGCGCCGGGCGACCCGTCGCGCTCGGCGCTCGGATGC
 CGTCTGGATGCGCACCGGAGGCTATGGCGAGAGCGAGTGCAGCGCCAGCGAGGGCGAGTGCAGCCCT
 CAGCTCTGCTCCAGGACTCCGACGGCAGCGGAGGCTCGTGTGGCCGACGAGTGGTGGCGGCCGA
 GGAGCCTCGCGTCCGGGCGAGGGGTGCGGGGTTGGTGGGACGCCCGGGTCCGCCAAGTCTTCG
 TGAATAACAAGGCATCGACGCGCTGAAGAAAAGATCCTTCGTTTTCGTGGGTTCTCTAAAGTTCAT
 GACGACTGTG

ACGCGTACGCGGCCGCTCGAGCAGAACTCATCTCAGAAGAGGATCTGGCAGCAATGATATCCTGGATT
 ACAAGGATGACGACGATAAGGTTAA

Protein Sequence:

>RR216995 representing NM_001191947
 Red=Cloning site Green=Tags(s)

MIRAFSFPVSPERGRLRGWLEGLAGLCELHLRERQYRVQALRLAQPGMGGAEEDEEAEDEEDAA
 AARRAAAAL EEQLEALPGLIWDLGQQLGDL SLESGLDQESGRSSGFYEDPSSTGGPDSPPSTFCGDSGF
 SGSGSYGRLGPS DPRGIYASERPKSLGDASPVPE SVGARVAVPRSF SAPYPTAAAGAETCSSAERRARA
 GPFLTPSPLHAVALRSPRPSGRVPCGSPDGAASRPLDGYISALLRRRRRRGAGQPRTPSGGADGGARRQN
 GARPRPPEASPPPGARPAREPSTERAWAAWEAEVPPEPTPPAAASPLSSPAEGRLVKAQYISGAPAAS
 RGLPGRAARRRAPPLTRGRSVEQSPPRERPRRAAGRRRLAEPGRRGSPRARKAARSQSETSLGRAHAA
 PPPKYPTAERDEPRPPRRRGPAPTPTVQACRRWRSTAEIDAPDVRPRARVPAPRGPAPSPSAPRRLL
 YGCAGSDSECSAAGRPVPLGRRMPSGAPGGYGESESSASEGESPAFSSASSDSDSGSGLVWPQQLVAAA
 GASPSGPGAAGGGTPAGPAKVFVVIKASHALKKKILFRFRSGSLKVMTTV

TRTRPLEQKLISEEDLAANDILDYKDDDDKV

Restriction Sites: SgfI-MluI

Cloning Scheme:



ACCN: NM_001191947

ORF Size: 1830 bp

OTI Disclaimer: The molecular sequence of this clone aligns with the gene accession number as a point of reference only. However, individual transcript sequences of the same gene can differ through naturally occurring variations (e.g. polymorphisms), each with its own valid existence. This clone is substantially in agreement with the reference, but a complete review of all prevailing variants is recommended prior to use. [More info](#)

OTI Annotation: This clone was engineered to express the complete ORF with an expression tag. Expression varies depending on the nature of the gene.

Components: The ORF clone is ion-exchange column purified and shipped in a 2D barcoded Matrix tube containing 10ug of transfection-ready, dried plasmid DNA (reconstitute with 100 ul of water).

Reconstitution Method:

1. Centrifuge at 5,000xg for 5min.
2. Carefully open the tube and add 100ul of sterile water to dissolve the DNA.
3. Close the tube and incubate for 10 minutes at room temperature.
4. Briefly vortex the tube and then do a quick spin (less than 5000xg) to concentrate the liquid at the bottom.
5. Store the suspended plasmid at -20°C. The DNA is stable for at least one year from date of shipping when stored at -20°C.

RefSeq: [NM_001191947.2](#)

RefSeq Size: 2803 bp

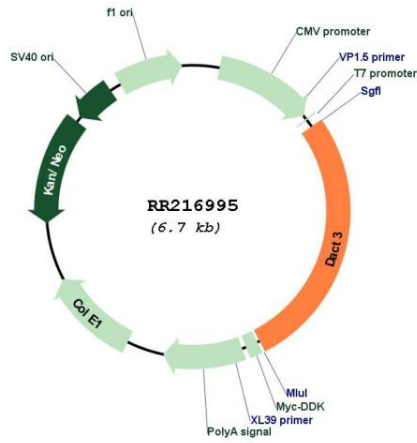
RefSeq ORF: 1833 bp

Locus ID: 499088

Cytogenetics: 1q21

MW: 63.4 kDa

Product images:



Circular map for RR216995